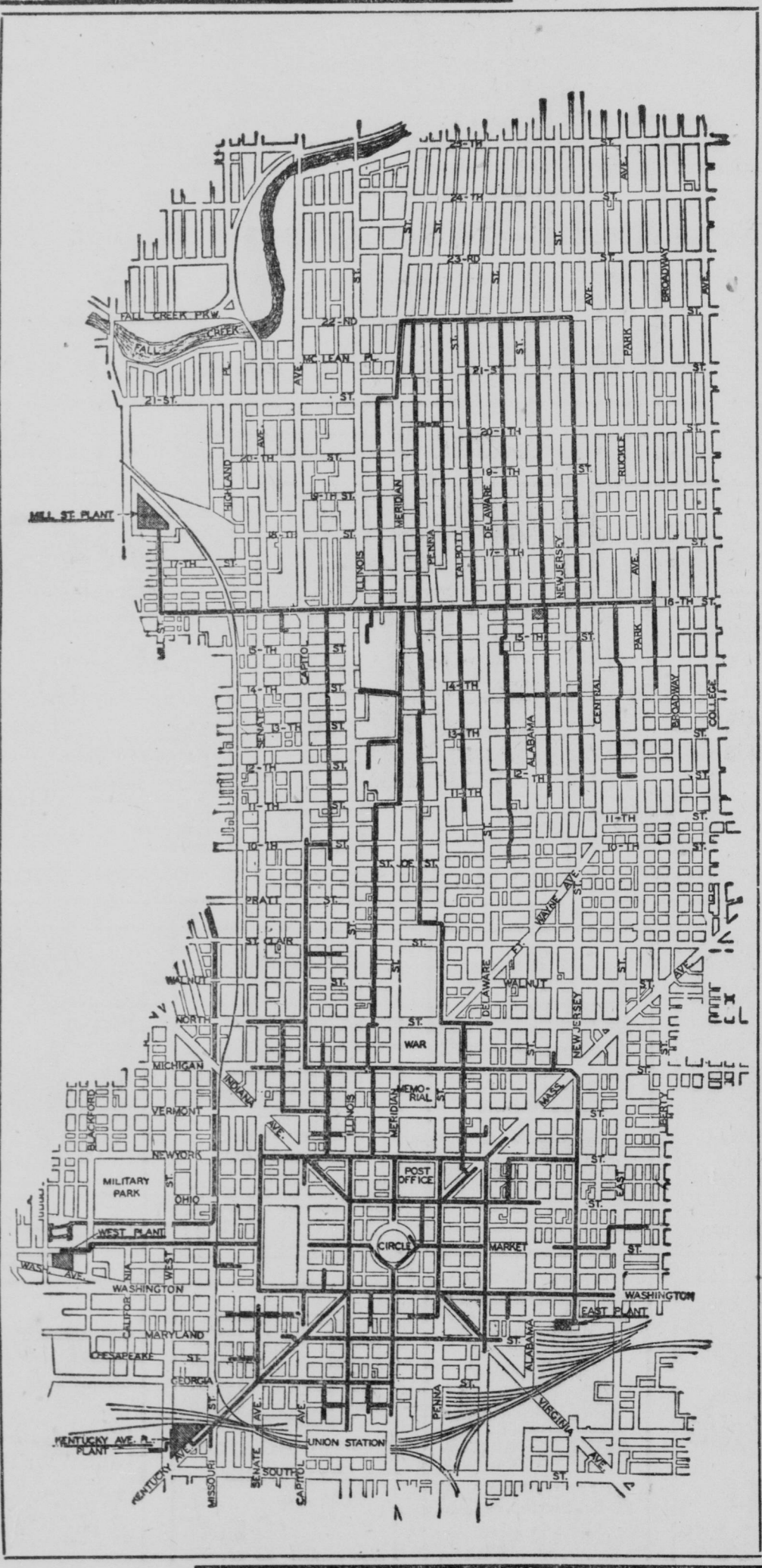
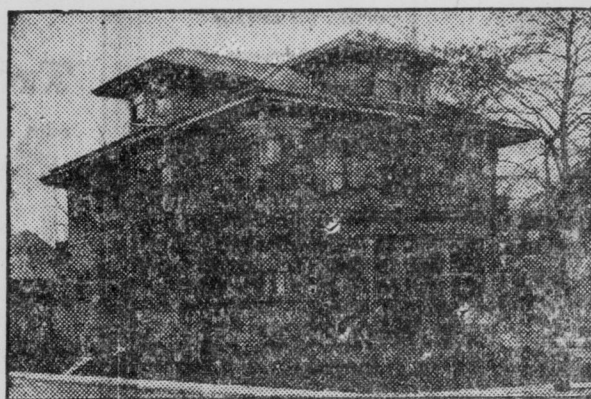


Another Indianapolis Achievement

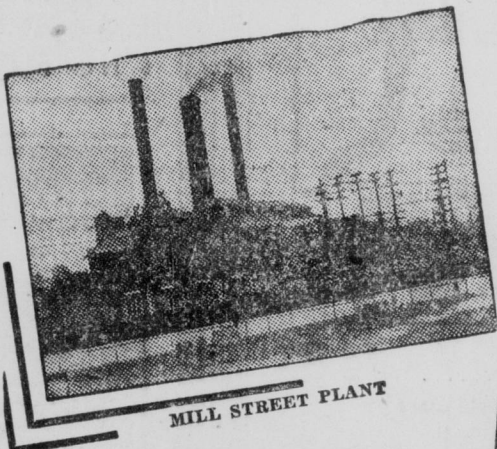
WITH the addition to its downtown heating system covering Morton Place and adjacent territory by the Indianapolis Power and Light Company, Indianapolis now has the largest low-pressure heating system in the world. This addition constructed the past summer was the largest ever installed in one year by any utility. Over eleven miles of underground mains, 450 tons of pipe, and 160 carloads of material were used. An average of 500 men working on day and night shifts were steadily employed for four months on the immense project.



Map of Steam Heating Service



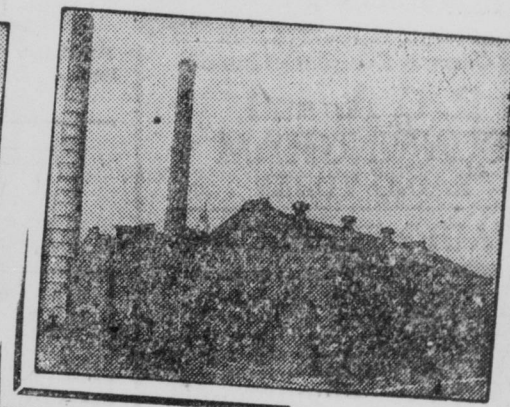
HOME owners in Morton Place and vicinity now have available the convenience of central station heating service at cost comparable with other heating methods. Apartment owners and occupants of apartment buildings, through means of this new heating system can have an assurance of satisfactory heating service the entire heating period, at competitive costs.



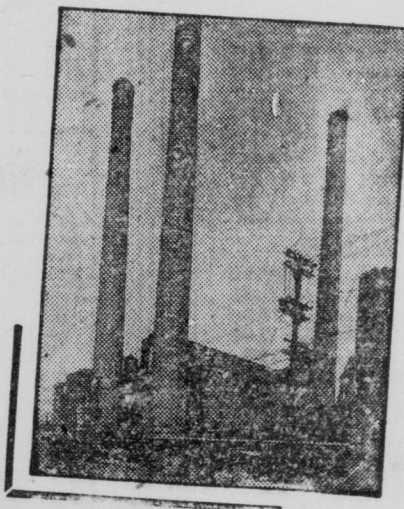
MILL STREET PLANT



KENTUCKY AVE. PLANT



EAST PLANT



WASHINGTON AVE. PLANT

THE first three huge plants shown herewith, with the fourth large reserve plant, approximately furnish 2,000,000,000 pounds of steam per year to the system.

HEATING service is now available adjacent to lines shown. Architects, builders, home owners and prospective purchasers of property are urged to consult our heating department for estimates as to cost of installation and heat. No obligation will be incurred.

**INDIANAPOLIS
POWER & LIGHT
COMPANY**

48 MONUMENT CIRCLE

"EDISON SERVICE"

Riley 7621