

# CHINESE HANG MILLSTONES ON U. S. EXPEDITION

Roy Chapman Andrews and  
Aids Are Hampered by  
Society's Demands.

**By Science Service**  
NEW YORK, Oct. 3.—Responsibility for the interruption of the work of the American Museum of Natural History in Mongolia is laid at the door of a Chinese organization, the Society for the Preservation of Cultural Objects, by Dr. Henry Fairfield Osborn, president of the American museum, in a communication which will appear in the forthcoming issue of the scientific journal, "Science."

The expeditions of the museum, of which the present was intended to be the seventh, have attracted world-wide attention because of their sensational discoveries of dinosaur eggs and fossils, and for their hope of finding the original home of the human race.

The Chinese Society for the Preservation of Cultural Objects is not in any way an official body, but it possesses great influence and apparently has been able to bend officers of the Chinese government to its will.

**Andrews Tells of Troubles**

Roy Chapman Andrews, leader of the American field party, describes much anti-foreign propaganda which this organization has been carrying on through the press and other media, charging American and European scientific expeditions with "stealing China's priceless treasures," "infringing her sovereign rights," "seeking for oil and minerals," "being spies against the government," and so on.

At the beginning of the 1929 season, Andrews states, the Chinese demanded joint participation in and control over the field expedition, retention in China of much of the material obtained, eventual return of all specimens sent to the United States for study, and payment by the American museum of all expenses for China experts to this country to carry on research in the museum.

After prolonged negotiations in an endeavor to obtain a modification of these demands, the American museum authorities decided to suspend operations.

**Chinese Hamper Explorers**

The Chinese Society for the Preservation of Cultural Objects, Andrews charges, has interfered with the transportation of specimens obtained by the expedition of a year ago, causing Chinese officials to hold them at Kalgan for six weeks, and demanding certain concessions to the society before they were released. Dr. Osborn adds that through the active interest of the Chinese minister, Dr. Chao Chu Wu, and Secretary of State Stimson, the collection finally has been shipped and now is on the way to the American museum, after a delay of more than a year.

American scientists have not been alone in their molestation through the influence of this Chinese society. A large Swedish expedition, under the noted explorer, Sven Hedin, was forced to accept the addition of a group of Chinese to its personnel at Swedish expense, and to permit joint Chinese control.

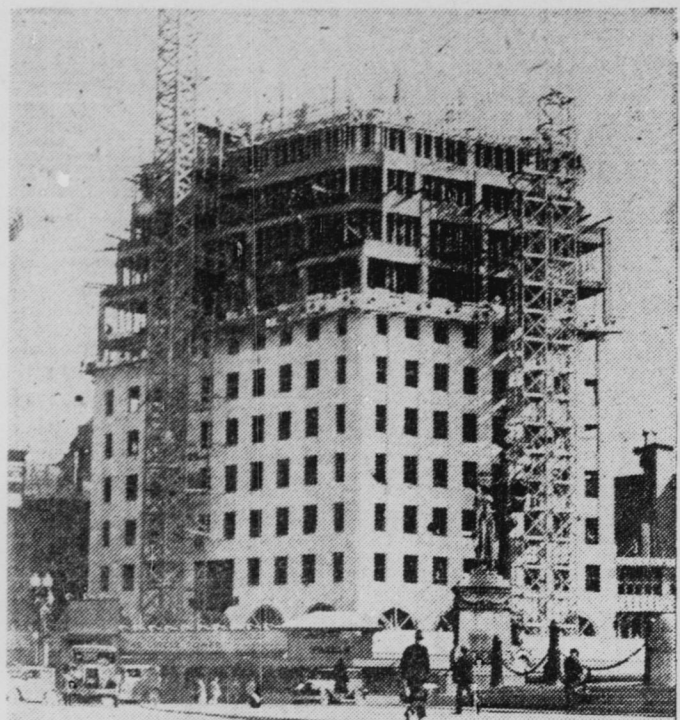
**134 ENROLL AT COLLEGE**

Physical Education Students Represent All Parts of Nation.

Representing all parts of the United States, 134 students this week enrolled in the Indianapolis College of Physical Education, formerly the Normal College of the American Gymnastic Union.

Indianapolis students enrolled include: Iona Yvonne Giep, Alice Jane Hessler, Dorothy E. Rath, Thelma Simmons, Gilbert E. Carter and Joseph W. Statz.

## Circle Tower Is Rising



Rapid progress in construction of the new Circle Tower, which, when completed, will be fourteen stories in height, is depicted in the photograph above. Workmen have built the outer walls of twelve stories. The structure is located at Market street and Monument circle.

## Center Township Total Tax Rate Cut to \$2.82

Tentative Levies Set for  
All Units Excepting Sanitary District.

Unless the state tax board today sees fit to reduce the Indianapolis sanitary district levy of 7 cents, total tax rate for property owners in Center township, Marion county, will be \$2.82½ cents on each \$100 worth of taxable.

This is a 12½-cent increase over the 1928 rate. Tentative rates stood today as follows: Indianapolis school city, \$1.02; Marion county, 38 cents; city, \$1.10; state, 29 cents; Center township, 3½ cents; and the sanitary district, 7 cents.

Last year the rates were: School, \$1.02; county, 31½ cents; city, \$1.10; state, 23 cents, and Center township, 3½ cents.

**Rates Are Approved**

The county and school rates were approved by the state tax board late Tuesday and will remain at the above tentative figures, unless there is some error in present calculations. This announcement was made by Chairman James Showalter of the state board.

Keeping the school levy at the present rate of \$1.02 check-mated a proposed increase of 32 cents asked by the Indianapolis school commissioners.

Appeal of the Marion county levy was on a request for 41½ cents. One cent was cut from the general fund by the state board and 2½ cents from the gravel road repair fund. As approved the total county budget rate is distributed as follows: General fund, 20 cents; sinking fund, 13 cents; tuberculosis, 2½ cents, and the gravel road repair fund, 2½ cents.

**Appeals Are Filed**

All appeals were filed by the civic affairs committee of the Chamber of Commerce and the Indiana Taxpayers' Association.

The general city levy and Center township rate were not appealed. Fourteen cents was cut from the

**Bargains in Grand  
Pianos and Radios  
Convenient Terms!  
BALDWIN'S  
On the Circle**

## PYTHIAN ORDER OPENS SESSION

350 Delegates Attending  
State Convention.

Three hundred and fifty delegates are attending the forty-first annual state convention of Pythian Sisters, which opened here today in the assembly hall of the K. of P. building.

Mrs. Mary B. Alkman, of Newport, grand chief, opened the two-day session at 10 a. m. Election of officers for the coming year was to open today's program. A banquet will be held tonight.

Officers who will succeed to new offices without election include Mrs. Daisy Duvall of Richmond, who succeeds Mrs. Alkman as grand chief; Mrs. Nellie McCurry of Goodland, grand senior; Mrs. Ida Neal of Aurora, grand junior; Mrs. Laura Burdge of Logansport, grand outer guard; Mrs. Ida Perry of Auburn, state manager; Mrs. Cecil Jellison of South Bend, protector, and Miss Magdalena Fred of McCordsville, mistress of records. Mrs. Alkman will become past grand chief.

Last year it was estimated that between 3,000,000 and 4,000,000 Chinese moved into Manchuria.

**Have That Footlight Sheen**  
By Edna Wallace Hooper

To my audiences, my hair is of everlasting interest. It always looks alive and women admire its constant sheen.

One of my "secrets" is mere cleanliness. The fascinating glow comes from the regular use of Wave and Sheen.

I shampoo my hair once a week under ordinary circumstances. After it dries I comb it and apply Wave and Sheen. Then I place my combs in the direction I wish the waves. (My hair is not curly.)

You can get Wave and Sheen at any toilet counter. Your money refunded if you are not pleased with results.—Advertisement.

## SPECIALS ON FISH

FRESH  
**Boned Herring**  
ALL MEAT—NO WASTE  
**Pound 20 Cents**

GENUINE  
**Fillet of Haddock**  
Rich in Iodent—Non-Fattening  
No Bones—No Waste—Delicious  
**Pound 22 Cents**

FRESH  
**Oysters** SOLD SOLID PACK  
NO WATER ADDED  
At All Meat Departments

Highest Quality **KROGER'S** Lowest Prices

# TOMORROW AT MILLER-WOHL'S DRESS CLEARANCE

ONE DAY  
ONLY

These Prices  
Prevail for  
FRIDAY  
ONLY!

YES  
LARGE  
SIZES

FALL  
Dresses  
**\$4.88**

**2 Dresses for \$9**  
Never before have we offered such marvelous values at so low a price. Come—choose 2 beautiful new Fall dresses at a price you usually pay for one. All sizes and colors.

We're  
Overstocked on  
BRAND  
NEW FALL  
DRESSES

We Have Reduced Prices  
For Quick Clearance

**Jersey DRESSES**

These are smart and appealing garments indeed. Your choice of either the 3-piece sport style or novelty 1-piece Princess styles with pleated skirts. All colors and sizes.

**\$5**

**Summer  
DRESSES  
98c**

Included are silk dresses and other summer materials. Priced for quick clear-a-way. Shop early, please.

## Beautiful New FALL DRESSES



Think of it! Fabrics such as these at a price so low. Frocks in dressy materials for afternoon and informal evening affairs. Frocks in trim tailored fabrics for street, for business, for school, for sports and for traveling. Dresses for every hour and every occasion of the autumn season. All the new Autumn shades. Sizes 14-48.

**\$7.77**

**2 DRESSES FOR \$15**

Chic, High Type  
FALL DRESSES

Here are the smart new styles of the Autumn mode. Dresses with the new "tucked in" waists, with uneven hemline, with drapes, with circular skirts, with tiers, with jackets, are but a few of their unusual new fashion touches. Certainly every new style of the Autumn season.

**\$14.95**

Stylish, Stout  
**FALL DRESSES  
\$9.95**

Here is real value-giving in this tremendous sale of larger size dresses. Every one especially designed in the slenderizing, graceful lines so becoming to a woman of full figure. Flat crepe, crepe back satins, georgettes, and georgette and velvet combinations. Styles for every occasion. Colors and Black.

Half Sizes 42½ to 52½. Extra Sizes 44 to 52

**1,350 Pairs New  
Fall Shoes**

Included at this price are the very latest modes in Fall footwear. Pumps, straps, and oxfords. High and low heels and a marvelous selection of 4-Inch Heel Style

**\$2.95**

**Tread-o-Pedic  
Arch Support  
SHOES**  
Black and Brown Kid and Patent Leather **\$2.95**

**We Say it With Values!**  
**THE MILLER-WOHL CO.**  
45 EAST WASHINGTON STREET

## STOUT SIZE FALL DRESSES

Beautiful new satin dresses in sizes 38 to 52. You will find a nice assortment of styles in black and other new fall shades.

**\$5.95**

## Smart New FELT HATS

**\$3**

Large  
and  
Small  
Head  
Sizes



Eyebrow hats, off-the-forehead hats, long-in-the-back hats, wide-at-the-side—every new and approved style of the Autumn season.

Plenty of the new brown shades, plenty of tan, of blue, of English green, wine, and black. Every new shade for every new Fall costume.

**SPECIAL BASEMENT SALE**

**Felt Hats \$1.49**

All the new Fall colors, plenty of black, chic styles in the much called-for youthful large head sizes. Early shopping advised.

## Continuing Our Great Sale WINTER COATS

See the Lovely Models in  
Our Windows

See the massive off-the-face shawl collars, Queen Anne standing collars, deep elbow cuffs, furled bottoms and panels, tunics, the novel tucked backs, cape effects, see them all—

**Then Come in and Try Them On!**

**\$25**

A SMALL  
DEPOSIT  
WILL HOLD  
ANY COAT  
IN OUR  
LAYAWAY

## A New Breakfast Food with a new delicious crispness

Three Cereals in One—Oatmeal,  
Corn, Wheat—Perfectly Delicious

A CEREAL that stays crisp to the last spoonful in spite of milk and cream. A cereal entirely different in flavor from any you have ever known. That combines the three supreme grains as no other ready-to-eat cereal does.

It is called Quaker CRACKELS because of its unusual crispness. It is made by an oven-blending process that crisps together the choicest food elements of wheat, corn and oats.

Thus Quaker CRACKELS has a taste utterly different from other cereals. There's the rich nutlike flavor of oatmeal. The zesty tang of whole wheat. The mellowness of golden corn and the nutrition, too, of all three great energy grains.

And—best of all—because of this special oven blending, CRACKELS retains a zesty, fresh-from-the-oven crispness—no matter how much milk and cream you use—down to the last spoonful. It pours out from the box to your dish, crackling with crispness.

By Quaker Crackels today from your grocer. Your family will delight in this new cereal.

**QUAKER CRACKELS**  
Product of THE QUAKER OATS COMPANY

New shape... new taste... new delicious crispness in Quaker Crackels