

TARIFF BILL WOULD RAISE LIVING COSTS

Greatly Increased Duties on Necessities Expected to Increase Prices.

By *Spring-Howard Newspaper Alliance*
WASHINGTON, Aug. 19.—The tariff bill came from the senate finance committee majority today much as that body received it—carrying the highest general level of taxes in history with hundreds of upward changes which will increase the cost of living in the American home.

Downward revision of house rates affecting half a dozen important commodities was balanced by scores of changes upward in other schedules, and in general those rates which were lowered are still far above the present duties.

Economists who figured the house bill would increase the cost of living from \$600,000,000 to \$700,000,000 say the senate bill as it now stands would nearly equal that figure. Finance committee Republicans still have to consider the administrative features of the house bill, characterized by opponents as giving the President and the tariff commission almost czaristic powers, but their work on rates is finished. Democratic members were given copies of the completed schedules today.

Bill May Raise Storm

The whole bill is expected to be reported to the senate about Sept. 4, there undoubtedly to be rewritten in many important particulars, and with some observers predicting it will raise such a storm it will not pass in the special session.

City consumers are especially hard hit by the bill. The finance committee met the charges made by agricultural interests that the bill discriminated against them by a general increase of agricultural duties, already raised from 50 to 60 per cent by the more important decreases of the house rates were those by the senate committee were those on sugar, virgin wool, watches and clocks, diamonds and pearls, and autos. Duties were removed entirely on shingles, logs and maple and birch lumber, manganese ore and several minor products. Pleas for a tariff on crude oil and on blackstrap molasses was left as it is.

Wool Duty Tripled

Against these decreases, the senate committee retained the house duties on bricks and cement, taxed for the first time, retained a 10 per cent tax on hides and compensatory 20 per cent duties on shoes, and increased the house taxes on leathers. The duty was tripled on cheap wools, used to make low-priced clothing—a change expected to be reflected in increased prices. The house's big increases on glass were generally left untouched, as were the rayon, cotton and sundries schedules, chemicals and tobacco. Many upward revisions appear in the metals schedule. Rayon rates were generally unchanged.

The senate committee increased agricultural rates with a sweeping hand, particularly on milk and cream, maple sugar, dates, lemons, cherries and other fruits. The prohibitive taxes on potatoes and wheat were left unchanged, as were the house rates on flax and hemp, cattle, and other items.

The sugar, brick, cement, hides and shoes and waste wool schedules are expected to bring bitter senate debate. The senate committee's sugar increase amounts to about one-half cent a pound, as against two-thirds of a cent in the house bill. The auto tax was cut from 25 to 10 per cent for autos and trucks selling for less than \$1,000, but the uselessness of the tariff on autos was admitted even by the industry.

Gone, but Not Forgotten

Automobiles reported to the police as stolen belong to:
G. H. Gant, 2715 Boulevard place, Nash coach, from Illinois street near Union station.

Raymond Money, Brownsburg, Ind., Chevrolet coach, 41-536, from Missouri and Market streets.

Jeup & Moore, Inc., 930 K. of P. building, Ford tudor, 1-410, from in front of the K. of P. building.

Jesse Osborne, 955 Fletcher avenue, Ford tudor, from in front of Linden hotel.

Berry Griggs, Richmond, Ky., Chevrolet touring, 581-888 Kentucky, from Richmond, Ky.

BACK HOME AGAIN

Stolen automobiles recovered by the police belong to:
Daniel Hied, 2325 West Michigan street, Overland touring, found at White river boulevard and Burdall boulevard.

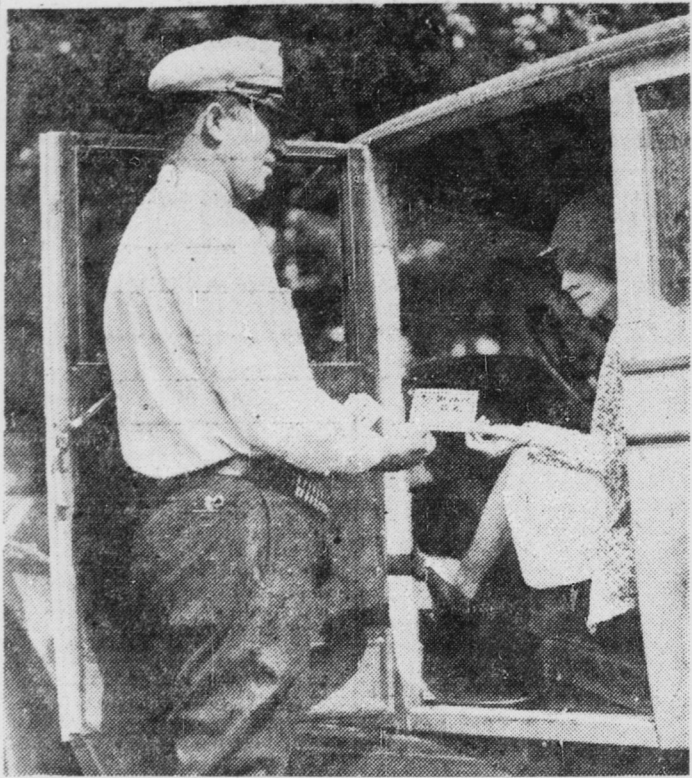
George Campbell, 24 South State street, Ford roadster, found at Arnold avenue and Walnut street.
Buick truck, T15-117, found at 719 Pearson street. No certificate of title in car.

5,000 Attend Parish Reunion
The Rev. Francis Early, assistant pastor of St. Philip Neri Catholic church, was in charge of the annual parish reunion Sunday afternoon and evening. More than five thousand persons attended.

NEW AND USED FURNITURE BOUGHT AND SOLD
Lewis Furniture Co.
United Trade-In Store
844 South Meridian Street

Your Savings Account With
The Meyer-Kiser Bank
Will Earn 4 1/2% Interest
128 E. WASHINGTON ST.

Annual Brake Testing Drive Opened by Police



Miss Vida Dicks of Zionsville passed the brake test in quick time today. Motor policeman Ernest Haught is shown in the picture handing Miss Dicks the windshield sticker that gives proof of "Brakes O. K."

Testing Lanes Opened on City Streets for Tryouts.

Operators of automobiles with faulty brakes were in disfavor in Indianapolis today with the start of the annual brake testing campaign by the police department and the Hoosier Motor Club.

The scene of today's activities was on Eighteenth street between Meridian and Illinois streets, where police were on hand at 8 a. m. directing motorists to the testing lane.

Motorists whose autos have faulty brakes are ordered to have the devices repaired within twenty-four hours and return for a second test. The test requires cars to be brought to a stop within a specified distance at varying speeds.

Stations for brake testing and the days are: Tuesday, McCarty street, between Madison avenue and Delaware streets; Wednesday, Trowbridge street, between English and Southeastern avenues, and on Thursday the campaign ends on Eighteenth street, between Meridian and Illinois streets.

Testing stations will be open from 8 a. m. to 4 p. m. each day.

Stations for brake testing and the days are: Tuesday, McCarty street, between Madison avenue and Delaware streets; Wednesday, Trowbridge street, between English and Southeastern avenues, and on Thursday the campaign ends on Eighteenth street, between Meridian and Illinois streets.

Testing stations will be open from 8 a. m. to 4 p. m. each day.

Stations for brake testing and the days are: Tuesday, McCarty street, between Madison avenue and Delaware streets; Wednesday, Trowbridge street, between English and Southeastern avenues, and on Thursday the campaign ends on Eighteenth street, between Meridian and Illinois streets.

Testing stations will be open from 8 a. m. to 4 p. m. each day.

Stations for brake testing and the days are: Tuesday, McCarty street, between Madison avenue and Delaware streets; Wednesday, Trowbridge street, between English and Southeastern avenues, and on Thursday the campaign ends on Eighteenth street, between Meridian and Illinois streets.

Testing stations will be open from 8 a. m. to 4 p. m. each day.

Stations for brake testing and the days are: Tuesday, McCarty street, between Madison avenue and Delaware streets; Wednesday, Trowbridge street, between English and Southeastern avenues, and on Thursday the campaign ends on Eighteenth street, between Meridian and Illinois streets.

Testing stations will be open from 8 a. m. to 4 p. m. each day.

Stations for brake testing and the days are: Tuesday, McCarty street, between Madison avenue and Delaware streets; Wednesday, Trowbridge street, between English and Southeastern avenues, and on Thursday the campaign ends on Eighteenth street, between Meridian and Illinois streets.

Testing stations will be open from 8 a. m. to 4 p. m. each day.

Stations for brake testing and the days are: Tuesday, McCarty street, between Madison avenue and Delaware streets; Wednesday, Trowbridge street, between English and Southeastern avenues, and on Thursday the campaign ends on Eighteenth street, between Meridian and Illinois streets.

Testing stations will be open from 8 a. m. to 4 p. m. each day.

Stations for brake testing and the days are: Tuesday, McCarty street, between Madison avenue and Delaware streets; Wednesday, Trowbridge street, between English and Southeastern avenues, and on Thursday the campaign ends on Eighteenth street, between Meridian and Illinois streets.

Testing stations will be open from 8 a. m. to 4 p. m. each day.

Stations for brake testing and the days are: Tuesday, McCarty street, between Madison avenue and Delaware streets; Wednesday, Trowbridge street, between English and Southeastern avenues, and on Thursday the campaign ends on Eighteenth street, between Meridian and Illinois streets.

Testing stations will be open from 8 a. m. to 4 p. m. each day.

Stations for brake testing and the days are: Tuesday, McCarty street, between Madison avenue and Delaware streets; Wednesday, Trowbridge street, between English and Southeastern avenues, and on Thursday the campaign ends on Eighteenth street, between Meridian and Illinois streets.

Testing stations will be open from 8 a. m. to 4 p. m. each day.

Stations for brake testing and the days are: Tuesday, McCarty street, between Madison avenue and Delaware streets; Wednesday, Trowbridge street, between English and Southeastern avenues, and on Thursday the campaign ends on Eighteenth street, between Meridian and Illinois streets.

Testing stations will be open from 8 a. m. to 4 p. m. each day.

Stations for brake testing and the days are: Tuesday, McCarty street, between Madison avenue and Delaware streets; Wednesday, Trowbridge street, between English and Southeastern avenues, and on Thursday the campaign ends on Eighteenth street, between Meridian and Illinois streets.

Testing stations will be open from 8 a. m. to 4 p. m. each day.

Stations for brake testing and the days are: Tuesday, McCarty street, between Madison avenue and Delaware streets; Wednesday, Trowbridge street, between English and Southeastern avenues, and on Thursday the campaign ends on Eighteenth street, between Meridian and Illinois streets.

Testing stations will be open from 8 a. m. to 4 p. m. each day.

Stations for brake testing and the days are: Tuesday, McCarty street, between Madison avenue and Delaware streets; Wednesday, Trowbridge street, between English and Southeastern avenues, and on Thursday the campaign ends on Eighteenth street, between Meridian and Illinois streets.

Testing stations will be open from 8 a. m. to 4 p. m. each day.

Stations for brake testing and the days are: Tuesday, McCarty street, between Madison avenue and Delaware streets; Wednesday, Trowbridge street, between English and Southeastern avenues, and on Thursday the campaign ends on Eighteenth street, between Meridian and Illinois streets.

Testing stations will be open from 8 a. m. to 4 p. m. each day.

Stations for brake testing and the days are: Tuesday, McCarty street, between Madison avenue and Delaware streets; Wednesday, Trowbridge street, between English and Southeastern avenues, and on Thursday the campaign ends on Eighteenth street, between Meridian and Illinois streets.

Testing stations will be open from 8 a. m. to 4 p. m. each day.

Stations for brake testing and the days are: Tuesday, McCarty street, between Madison avenue and Delaware streets; Wednesday, Trowbridge street, between English and Southeastern avenues, and on Thursday the campaign ends on Eighteenth street, between Meridian and Illinois streets.

Testing stations will be open from 8 a. m. to 4 p. m. each day.

Stations for brake testing and the days are: Tuesday, McCarty street, between Madison avenue and Delaware streets; Wednesday, Trowbridge street, between English and Southeastern avenues, and on Thursday the campaign ends on Eighteenth street, between Meridian and Illinois streets.

Testing stations will be open from 8 a. m. to 4 p. m. each day.

Stations for brake testing and the days are: Tuesday, McCarty street, between Madison avenue and Delaware streets; Wednesday, Trowbridge street, between English and Southeastern avenues, and on Thursday the campaign ends on Eighteenth street, between Meridian and Illinois streets.

Testing stations will be open from 8 a. m. to 4 p. m. each day.

Stations for brake testing and the days are: Tuesday, McCarty street, between Madison avenue and Delaware streets; Wednesday, Trowbridge street, between English and Southeastern avenues, and on Thursday the campaign ends on Eighteenth street, between Meridian and Illinois streets.

Testing stations will be open from 8 a. m. to 4 p. m. each day.

Stations for brake testing and the days are: Tuesday, McCarty street, between Madison avenue and Delaware streets; Wednesday, Trowbridge street, between English and Southeastern avenues, and on Thursday the campaign ends on Eighteenth street, between Meridian and Illinois streets.

Testing stations will be open from 8 a. m. to 4 p. m. each day.

Stations for brake testing and the days are: Tuesday, McCarty street, between Madison avenue and Delaware streets; Wednesday, Trowbridge street, between English and Southeastern avenues, and on Thursday the campaign ends on Eighteenth street, between Meridian and Illinois streets.

Testing stations will be open from 8 a. m. to 4 p. m. each day.

Stations for brake testing and the days are: Tuesday, McCarty street, between Madison avenue and Delaware streets; Wednesday, Trowbridge street, between English and Southeastern avenues, and on Thursday the campaign ends on Eighteenth street, between Meridian and Illinois streets.

Testing stations will be open from 8 a. m. to 4 p. m. each day.

Stations for brake testing and the days are: Tuesday, McCarty street, between Madison avenue and Delaware streets; Wednesday, Trowbridge street, between English and Southeastern avenues, and on Thursday the campaign ends on Eighteenth street, between Meridian and Illinois streets.

Testing stations will be open from 8 a. m. to 4 p. m. each day.

Stations for brake testing and the days are: Tuesday, McCarty street, between Madison avenue and Delaware streets; Wednesday, Trowbridge street, between English and Southeastern avenues, and on Thursday the campaign ends on Eighteenth street, between Meridian and Illinois streets.

Testing stations will be open from 8 a. m. to 4 p. m. each day.

Stations for brake testing and the days are: Tuesday, McCarty street, between Madison avenue and Delaware streets; Wednesday, Trowbridge street, between English and Southeastern avenues, and on Thursday the campaign ends on Eighteenth street, between Meridian and Illinois streets.

Testing stations will be open from 8 a. m. to 4 p. m. each day.

Stations for brake testing and the days are: Tuesday, McCarty street, between Madison avenue and Delaware streets; Wednesday, Trowbridge street, between English and Southeastern avenues, and on Thursday the campaign ends on Eighteenth street, between Meridian and Illinois streets.

Testing stations will be open from 8 a. m. to 4 p. m. each day.

Stations for brake testing and the days are: Tuesday, McCarty street, between Madison avenue and Delaware streets; Wednesday, Trowbridge street, between English and Southeastern avenues, and on Thursday the campaign ends on Eighteenth street, between Meridian and Illinois streets.

Testing stations will be open from 8 a. m. to 4 p. m. each day.

Stations for brake testing and the days are: Tuesday, McCarty street, between Madison avenue and Delaware streets; Wednesday, Trowbridge street, between English and Southeastern avenues, and on Thursday the campaign ends on Eighteenth street, between Meridian and Illinois streets.

Testing stations will be open from 8 a. m. to 4 p. m. each day.

Stations for brake testing and the days are: Tuesday, McCarty street, between Madison avenue and Delaware streets; Wednesday, Trowbridge street, between English and Southeastern avenues, and on Thursday the campaign ends on Eighteenth street, between Meridian and Illinois streets.

Testing stations will be open from 8 a. m. to 4 p. m. each day.

Stations for brake testing and the days are: Tuesday, McCarty street, between Madison avenue and Delaware streets; Wednesday, Trowbridge street, between English and Southeastern avenues, and on Thursday the campaign ends on Eighteenth street, between Meridian and Illinois streets.

Testing stations will be open from 8 a. m. to 4 p. m. each day.

Stations for brake testing and the days are: Tuesday, McCarty street, between Madison avenue and Delaware streets; Wednesday, Trowbridge street, between English and Southeastern avenues, and on Thursday the campaign ends on Eighteenth street, between Meridian and Illinois streets.

Testing stations will be open from 8 a. m. to 4 p. m. each day.

Stations for brake testing and the days are: Tuesday, McCarty street, between Madison avenue and Delaware streets; Wednesday, Trowbridge street, between English and Southeastern avenues, and on Thursday the campaign ends on Eighteenth street, between Meridian and Illinois streets.

Testing stations will be open from 8 a. m. to 4 p. m. each day.

Stations for brake testing and the days are: Tuesday, McCarty street, between Madison avenue and Delaware streets; Wednesday, Trowbridge street, between English and Southeastern avenues, and on Thursday the campaign ends on Eighteenth street, between Meridian and Illinois streets.

Testing stations will be open from 8 a. m. to 4 p. m. each day.

Stations for brake testing and the days are: Tuesday, McCarty street, between Madison avenue and Delaware streets; Wednesday, Trowbridge street, between English and Southeastern avenues, and on Thursday the campaign ends on Eighteenth street, between Meridian and Illinois streets.

Testing stations will be open from 8 a. m. to 4 p. m. each day.

Stations for brake testing and the days are: Tuesday, McCarty street, between Madison avenue and Delaware streets; Wednesday, Trowbridge street, between English and Southeastern avenues, and on Thursday the campaign ends on Eighteenth street, between Meridian and Illinois streets.

Testing stations will be open from 8 a. m. to 4 p. m. each day.

Stations for brake testing and the days are: Tuesday, McCarty street, between Madison avenue and Delaware streets; Wednesday, Trowbridge street, between English and Southeastern avenues, and on Thursday the campaign ends on Eighteenth street, between Meridian and Illinois streets.

Testing stations will be open from 8 a. m. to 4 p. m. each day.

Stations for brake testing and the days are: Tuesday, McCarty street, between Madison avenue and Delaware streets; Wednesday, Trowbridge street, between English and Southeastern avenues, and on Thursday the campaign ends on Eighteenth street, between Meridian and Illinois streets.

Testing stations will be open from 8 a. m. to 4 p. m. each day.

Stations for brake testing and the days are: Tuesday, McCarty street, between Madison avenue and Delaware streets; Wednesday, Trowbridge street, between English and Southeastern avenues, and on Thursday the campaign ends on Eighteenth street, between Meridian and Illinois streets.

Testing stations will be open from 8 a. m. to 4 p. m. each day.

Stations for brake testing and the days are: Tuesday, McCarty street, between Madison avenue and Delaware streets; Wednesday, Trowbridge street, between English and Southeastern avenues, and on Thursday the campaign ends on Eighteenth street, between Meridian and Illinois streets.

Testing stations will be open from 8 a. m. to 4 p. m. each day.

Stations for brake testing and the days are: Tuesday, McCarty street, between Madison avenue and Delaware streets; Wednesday, Trowbridge street, between English and Southeastern avenues, and on Thursday the campaign ends on Eighteenth street, between Meridian and Illinois streets.

Testing stations will be open from 8 a. m. to 4 p. m. each day.

Stations for brake testing and the days are: Tuesday, McCarty street, between Madison avenue and Delaware streets; Wednesday, Trowbridge street, between English and Southeastern avenues, and on Thursday the campaign ends on Eighteenth street, between Meridian and Illinois streets.

Testing stations will be open from 8 a. m. to 4 p. m. each day.

Stations for brake testing and the days are: Tuesday, McCarty street, between Madison avenue and Delaware streets; Wednesday, Trowbridge street, between English and Southeastern avenues, and on Thursday the campaign ends on Eighteenth street, between Meridian and Illinois streets.

Testing stations will be open from 8 a. m. to 4 p. m. each day.

Stations for brake testing and the days are: Tuesday, McCarty street, between Madison avenue and Delaware streets; Wednesday, Trowbridge street, between English and Southeastern avenues, and on Thursday the campaign ends on Eighteenth street, between Meridian and Illinois streets.

Testing stations will be open from 8 a. m. to 4 p. m. each day.

Stations for brake testing and the days are: Tuesday, McCarty street, between Madison avenue and Delaware streets; Wednesday, Trowbridge street, between English and Southeastern avenues, and on Thursday the campaign ends on Eighteenth street, between Meridian and Illinois streets.

Testing stations will be open from 8 a. m. to 4 p. m. each day.

Stations for brake testing and the days are: Tuesday, McCarty street, between Madison avenue and Delaware streets; Wednesday, Trowbridge street, between English and Southeastern avenues, and on Thursday the campaign ends on Eighteenth street, between Meridian and Illinois streets.

Testing stations will be open from 8 a. m. to 4 p. m. each day.

Stations for brake testing and the days are: Tuesday, McCarty street, between Madison avenue and Delaware streets; Wednesday, Trowbridge street, between English and Southeastern avenues, and on Thursday the campaign ends on Eighteenth street, between Meridian and Illinois streets.

Testing stations will be open from 8 a. m. to 4 p. m. each day.

Stations for brake testing and the days are: Tuesday, McCarty street, between Madison avenue and Delaware streets; Wednesday, Trowbridge street, between English and Southeastern avenues, and on Thursday the campaign ends on Eighteenth street, between Meridian and Illinois streets.

Testing stations will be open from 8 a. m. to 4 p. m. each day.

Stations for brake testing and the days are: Tuesday, McCarty street, between Madison avenue and Delaware streets; Wednesday, Trowbridge street, between English and Southeastern avenues, and on Thursday the campaign ends on Eighteenth street, between Meridian and Illinois streets.

Testing stations will be open from 8 a. m. to 4 p. m. each day.

Stations for brake testing and the days are: Tuesday, McCarty street, between Madison avenue and Delaware streets; Wednesday, Trowbridge street, between English and Southeastern avenues, and on Thursday the campaign ends on Eighteenth street, between Meridian and Illinois streets.

Testing stations will be open from 8 a. m. to 4 p. m. each day.

Stations for brake testing and the days are: Tuesday, McCarty street, between Madison avenue and Delaware streets; Wednesday, Trowbridge street, between English and Southeastern avenues, and on Thursday the campaign ends on Eighteenth street, between Meridian and Illinois streets.

Testing stations will be open from 8 a. m. to 4 p. m. each day.

Stations for brake testing and the days are: Tuesday, McCarty street, between Madison avenue and Delaware streets; Wednesday, Trowbridge street, between English and Southeastern avenues, and on Thursday the campaign ends on Eighteenth street, between Meridian and Illinois streets.

Testing stations will be open from 8 a. m. to 4 p. m. each day.

Stations for brake testing and the days are: Tuesday, McCarty street, between Madison avenue and Delaware streets; Wednesday, Trowbridge street, between English and Southeastern avenues, and on Thursday the campaign ends on Eighteenth street, between Meridian and Illinois streets.

Testing stations will be open from 8 a. m. to 4 p. m. each day.

Stations for brake testing and the days are: Tuesday, McCarty street, between Madison avenue and Delaware streets; Wednesday, Trowbridge street, between English and Southeastern avenues, and on Thursday the campaign ends on Eighteenth street, between Meridian and Illinois streets.

Testing stations will be open from 8 a. m. to 4 p. m. each day.

Stations for brake testing and the days are: Tuesday, McCarty street, between Madison avenue and Delaware streets; Wednesday, Trowbridge street, between English and Southeastern avenues, and on Thursday the campaign ends on Eighteenth street, between Meridian and Illinois streets.

Testing stations will be open from 8 a. m. to 4 p. m. each day.

Stations for brake testing and the days are: Tuesday, McCarty street, between Madison avenue and Delaware streets; Wednesday, Trowbridge street, between English and Southeastern avenues, and on Thursday the campaign ends on Eighteenth street, between Meridian and Illinois streets.

Testing stations will be open from 8 a. m. to 4 p. m. each day.

Stations for brake testing and the days are: Tuesday, McCarty street, between Madison avenue and Delaware streets; Wednesday, Trowbridge street, between English and Southeastern avenues, and on Thursday the campaign ends on Eighteenth street, between Meridian and Illinois streets.

Testing stations will be open from 8 a. m. to 4 p. m. each day.

Stations for brake testing and the days are: Tuesday, McCarty street, between Madison avenue and Delaware streets; Wednesday, Trowbridge street, between English and Southeastern avenues, and on Thursday the campaign ends on Eighteenth street, between Meridian and Illinois streets.

Testing stations will be open from 8 a. m. to 4 p. m. each day.

Stations for brake testing and the days are: Tuesday, McCarty street, between Madison avenue and Delaware streets; Wednesday, Trowbridge street, between English and Southeastern avenues, and on Thursday the campaign ends on Eighteenth street, between Meridian and Illinois streets.

Testing stations will be open from 8 a. m. to 4 p. m. each day.

Stations for brake testing and the days are: Tuesday, McCarty street, between Madison avenue and Delaware streets; Wednesday, Trowbridge street, between English and Southeastern avenues, and on Thursday the campaign ends on Eighteenth street, between Meridian and Illinois streets.

Testing stations will be open from 8 a. m. to 4 p. m. each day.

Stations for brake testing and the days are: Tuesday, McCarty street, between Madison avenue and Delaware streets; Wednesday, Trowbridge street, between English and Southeastern avenues, and on Thursday the campaign ends on Eighteenth street, between Meridian and Illinois streets.

Testing stations will be open from 8 a. m. to 4 p. m. each day.

Stations for brake testing and the days are: Tuesday, McCarty street, between Madison avenue and Delaware streets; Wednesday, Trowbridge street, between English and Southeastern avenues, and on Thursday the campaign ends on Eighteenth street, between Meridian and Illinois streets.

Testing stations will be open from 8 a. m. to 4 p. m. each day.

Stations for brake testing and the days are: Tuesday, McCarty street, between Madison avenue and Delaware streets; Wednesday, Trowbridge street, between English and Southeastern avenues, and on Thursday the campaign ends on Eighteenth street, between Meridian and Illinois streets.

Testing stations will be open from 8 a. m. to 4 p. m. each day.

Stations for brake testing and the days are: Tuesday, McCarty street, between Madison avenue and Delaware streets; Wednesday, Trowbridge street, between English and Southeastern avenues, and on Thursday the campaign ends on Eighteenth street, between Meridian and Illinois streets.

Testing stations will be open from 8 a. m. to 4 p. m. each day.

Stations for brake testing and the days are: Tuesday, McCarty street, between Madison avenue and Delaware streets; Wednesday, Trowbridge street, between English and Southeastern avenues, and on Thursday the campaign ends on Eighteenth street, between Meridian and Illinois streets.

Testing stations will be open from 8 a. m. to 4 p. m. each day.

Stations for brake testing and the days are: Tuesday, McCarty street, between Madison avenue and Delaware streets; Wednesday, Trowbridge street, between English and Southeastern avenues, and on Thursday the campaign ends on Eighteenth street, between Meridian and Illinois streets.

Testing stations will be open from 8 a. m. to 4 p. m. each day.

Stations for brake testing and the days