

NEW BRIDGES AND PAVING GO INTO SERVICE

Rain Fails to Halt Work on
State Roads to
Any Extent.

New bridges and new pavement went into service on several state roads this week, according to announcements in the weekly traffic bulletin, issued today by Director John J. Brown of the state highway department.

Activity was reported throughout the state road system as contractors proceeded with paving projects, and maintenance forces dragged un-paved roads and repaired berms. The rainfall failed to halt paving progress to any great extent, Brown reported.

General road conditions were listed in the bulletin as follows:

Road 3—Detour from two miles north of Mt. Summit to one mile south of Muncie is ten miles. Detour from Hartsville to six miles north is eight miles. Detour from Ft. North to Petroleum is eight miles. Run-around one-half mile north of Reelfoot.

Road 1—Detour from three and one-half miles north of Wirt to Dupont is seven miles. Detour fair by river.

Road 2—Run-around three miles south of Huntington. Detour from Merriam to Albion is twelve miles and will change as work progresses.

Grading Gangs at Work

Road 15—Drive carefully past grading gangs between Marion and La Fontaine. Detour from La Fontaine to three miles south of Wabash is ten miles. Detour from Warsaw to three miles south of Leeburg is six miles.

Road 28—Detour from one mile west of Clarksville to four miles west of Frankfort account paving is ten miles. Detour from 1 mile west of Tipton-Clinton line to Tipton is sixteen miles.

Road 29—Detour from Osage to junction of 46 and 29 is twenty and three-fourths miles. Grading gangs east of Greensburg. Detour from Greensburg to Greensville is twenty-nine miles, fair condition. Detour from intersection of 28 to Michigantown is six and three-fourths miles subject to change. Detour from one mile south of Middletown to one mile north of Burlington is ten miles. Detour from Wynans to three miles south of Knox is twenty-four miles. Detour from four miles south of La Porte to south corporation line is nine miles. Detour from one mile north of La Porte to Michigan City is eight miles.

United States Road 31—Detour from seven miles south of Kokomo to Kokomo is eight and one-half miles. Drive carefully past workmen at the railroad subway nine miles south of Peru.

Fresh Oil on Road

Road 32—Detour from one-half mile east of Montgomery-Boone county line to Dover is seven and one-half miles, will change as work progresses. Fresh oil near Leoti.

Road 34—Detour in Crawfordville is one and one-half miles. Detour west of Peru is one mile.

Road 36—Detour in Rockville. Firestone lead limit on temporary bridge. Detour from three miles of Danville to one and one-half miles east is three and one-half miles.

Road 37—Detour from four miles south of Bloomington to Bedford is twenty-eight and one-half miles. Good surface, but narrow, and has many sharp turns.

U. S. Road 40—One-way traffic around patching gang between Cumberland and Greenfield.

Road 48—Watch for grading gangs east of Bloomington and between Columbus and Greensburg. Detour just west of Nashville is eight miles. (Can only be used in dry weather. In wet weather detour from Bloomington to Nashville is twenty-two miles. Detour three miles east of Columbus is three miles. (For local traffic.) Through traffic take eight and one-half-mile detour east from Columbus. Detour from Nashville to one mile west of Nashville is four and one-half miles.

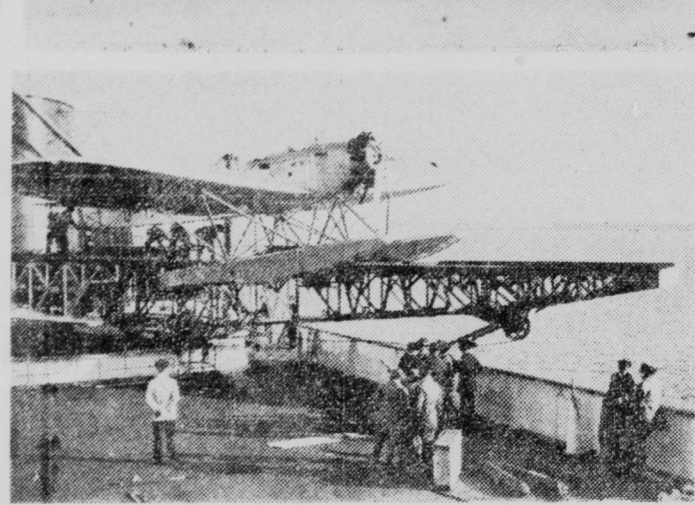
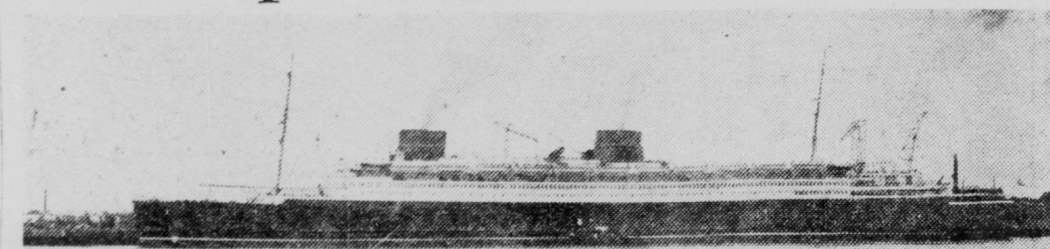
Detour of Eight Miles

U. S. Road 52—Detour from eight miles west of Metamora to Brookville is eighteen and one-half miles. Part of detour over 1 through traffic follow 1 to Connersville, then 46 to Rushville.

Road 56—Detour from Princeton to Douglas is seven miles. Detour from Jasper to a point east of Nashville is seven miles and poor, three miles of which is earth road. Heavy traffic avoid. Bridge run-around two miles east of Salem. Detour around earth slide two miles west of Vevay is two and one-half miles and dirt fair.

Road 67—Detour in Spencer over city streets, account of paving. Detour from five miles northeast of Muncie to two and

New German Liner, Queen of Sea, Speeding Toward America



Top, the North German Lloyd liner Bremen; below is Captain Leopold Ziegenhein, commander. Also is shown an air mail plane, to be christened New York, about to be catapulted from the deck of the Bremen. Ship-to-shore mail delivery is a regular feature of the service of this mammoth liner.

Bremen Is the Last Word in Vessel Construction, a Floating Palace.

By Times Special

NEW YORK, July 19.—On July 16, 1897, word was received in Bremen to the effect that the first North German Lloyd trans-Atlantic liner Bremen had reached New York. This was the beginning of what is today one of the largest steamship lines in the world.

On July 16, 1929, seventy-two years after the company's first ship reached America, the first of the new twin express liners, the Bremen started her maiden voyage to this country, and will next Monday majestically steam into New York harbor.

Launched Last August

Her commander is Captain Leopold Ziegenhein.

The Bremen was launched last August in Bremen, Germany, and was christened by President Von Hindenburg, with great pride and ceremony.

With a length of 924 feet and 98 feet wide, of 50,000 tons, the Bremen is a masterpiece for convenience and comfort.

The appointments of the Bremen have no comparison. The interior furnishings and decorations of the passenger accommodations have been executed by the foremost designers throughout Europe. Many of these have been done by the well-known decorator, Bruno Paul.

There are provisions for 2,200 class passengers, divided as follows, 800 first class, 300 second class, 500 tourist and 600 third class. This is an increase of nearly 33 per cent of the total class passengers carried by the Columbus, which ship, until the Bremen was built, was the largest of the Lloyd fleet. The first class accommodations are divided into 130 cabins with private bath, 100 cabins with shower bath and 40 cabins with toilet. With the exception of a few bachelor rooms, every

one-half miles west of Albany is three miles. Detour from Albany to Portland is twenty-one and one-half miles.

U. S. Road 130—Six-mile detour three miles west of Prospect is via West Baden and 36 and narrow. Run-around three and one-half miles west of Prospect. Bridge run-around one-half mile west of Hardingsburg.

Roads not mentioned, and parts of roads mentioned but not specified, and all detours not otherwise described, are in good condition.

cabin in the first class has a private bath, shower or toilet.

Special Rooms Provided

In addition to the usual public rooms the smoking rooms and the lounge, there is the reading and writing room, a special children's play room equipped with all modern amusement devices.

There is a huge ballroom which accommodates 300 people, and a stage where theatrical performances and other entertainment may be given. A large winter garden adjoins the smoking room. On the sun deck is located one of the greatest innovations in steamship appointments—a real night club, situated away from the rest of the ship so as not to disturb those who wish to rest and sleep.

For those who care for sports and exercise, there is a completely equipped gymnasium, with electric and turkish baths, the swimming pool, another feature of the Bremen, is one of the most beautiful ever built on any ship. There is, also, a rifle range, bowling alley and billiard room.

Little Shops on Board

Besides this, the ship boasts of another innovation, that of a colonnade of little shops, similar to those found on Fifth avenue, for the use of passengers who wish to shop. There is a barber shop, a hair dressing and beauty parlor for the ladies, magazine, souvenir and refreshment stands. A moving picture show is also one of the many diversions aboard ship.

The Bremen carries 2,200 passengers comfortably in addition to a crew of 950. She is an oil burner, driven by powerful steam turbines, and is propelled by four screws, each working independently of one another or together when required. A double bottom runs the entire length of the ship. She is equipped with every safety device known to marine engineers.

NEWLYWED HELD IN RAI

Groom of Three Days Faces Rum Charges.

A newlywed of three days, Everett Boyer, 708 1/2 South West street, today was under arrest on blind tiger charges after a police squad under Lieutenant Victor Houston raided his home Thursday, confiscating seventy quarts of home brew, and a quantity of wine and alcohol.

Zachary Taylor was president of the United States only eighteen months.

EDUCATION IS FIRST AIM OF FARM BOARD

Soil Tillers Must Become
'Co-Operatively Minded,'
Says Legge.

BY WELLS CHURCH

United Press Staff Correspondent
WASHINGTON, June 19.—Chairman Alexander H. Legge today directed the efforts of the federal farm board toward making the farmer "co-operatively minded."

"Education of the farmer on the capabilities of the board, as specifically outlined in the bill creating this organization, must come first," he said.

"The farmers, we find, are not organized, and those that are are not properly so."

"The bill states that no loans shall be made to any co-operative association unless, in the judgment of the board, the loan is in furtherance of the effective merchandising of agricultural commodities, and unless the association applying for the loan has an organization, management and business policies of such character as to insure the reasonable safety of the loan."

"There are 8,000,000 farmers in the United States and but 2,000,000 of them are organized in any way."

"They all must be organized under the provisions of the Capper-Volstead act of 1923, an enabling act for farm organizations, and under the laws of their separate state statutes on the subject. Until they do this the board can do nothing for them."

Legge said the board spent Thursday discussing legal matters with legal assistants of the agriculture department and in an attempt to choose permanent headquarters. No specific commodity as yet has been discussed.

BOOTLEGGERS PAROLED

Henry Tate Completes Sixty-day Prison Term: Will Pay Fine.

Henry Tate, convicted on a liquor charge in Marion county May 27, has served his sixty-day sentence at the Indiana state farm and has been paroled by Governor Harry G. Leslie with permission to pay his \$200 fine on monthly installments of \$30.

Bathing Beach at Camp

For Times Special

KOKOMO, Ind., July 19.—The Howard County Tuberculosis Association's health camp near Greensburg, now has a bathing beach as a result of a half day's work by members of Kokomo chapter of Phi Delta Kappa.

The Wm H Block Co

Men's Departments Featured Below Are
Open Until 6 P. M. Saturday
All Other Departments Close at 1 P. M.

"Take Your Choice"
Sale of Over 2,000

Hart Schaffner
& Marx Suits

For Men and Young Men

\$22.75



Satisfaction Guaranteed!

The season's choicest styles, colors, fabrics in this great sale of Hart Schaffner & Marx suits. Faultlessly tailored to fit men of all builds, longs, shorts, stouts, regulars and extra sizes.

"Take Your Choice"
Sale of Over 1,000

\$20 and \$25

All-Wool Suits

For Men \$14.95 and Young Men

Light, medium and dark colors for year 'round wear. Tailored of fine quality all-wool fabrics to meet the style demands of the well dressed man.

BLOCK'S—Third Floor.

Sale of Summer Suits and All-Wool Trousers

For Men and Young Men



All-Wool
Suits

For Men and
Young Men

\$10.00

Correctly tailored suits of
good quality fabrics.

2-Pc. Summer
Suits

For Men and
Young Men

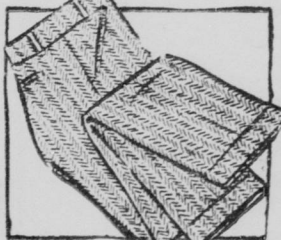
\$9.75

Mohairs, Palm Beach and
Tropical weights. Cool and
comfortable.



\$4.00
Trousers,
Half Price

\$5.00
Trousers,
Half Price



\$6.00
Trousers,
Half Price

\$7.00
Trousers,
Half Price

\$2.00

\$2.50

\$3.00

\$3.50

BLOCK'S—Basement.

Sale of Summer Trousers

Men's All-Wool
White Flannel
Trousers

\$5.98

Men's Plaid
Linen Golf
Knicker

\$2.39
(Plus Fours)

Khaki Riding
Breeches

\$1.98

All-Wool Trop-
ical Worsted
Trousers

\$4.98

Men's Fancy
Flannel Trousers

\$3.98

All-Wool Golf
Knicker
(Plus Fours)

\$2.98

For Men and
Young Men

Men's White Duck
Trousers

\$1.49

Men's Flannel
Trousers

\$2.50
Plain Colors
Sizes 32, 33, 34

Men's Genuine
Palm Beach
Trousers

\$3.98

Men's Khaki
Trousers

98c

Men's
"Auto Brand"
Khaki Trousers

\$1.49

Men's White
Linen Golf
Knicker
(Plus Fours)

\$2.19

BLOCK'S—Basement Store

FOR EVERY MEMBER OF THE FAMILY

Marott's
90% Semi-Annual
STORE WIDE SALE

QUALITY SHOES

20% to 50% Reductions

All Broken Lines

Yesterday the response to our Great Semi-Annual Sale so far exceeded our expectations that you would hardly suppose there was anything left . . . but there is! It is an outstanding opportunity to pick up bargains in smart footwear from our regular high-class stock at conspicuous savings! Gordon hosiery for Women . . . Shoes for Men . . . Women . . . and Children that were excellent values at regular prices. . . . NOW less 20% to 50%!!

Save Now on Quality Shoe Repairing . . . Sixth Floor
Shoes Called for and Delivered . . . LI. 5554

New daily service



The
NORTHLAND to
MICHIGAN

Through sleeping cars to Petoskey, Harbor Springs, W-
quetonsing, Mackinaw City. Leaves Indianapolis 3:25 P. M.

Reduced Summer Vacation Fares

Now—fast daily service to Northern Michigan on the Pennsylvania's famous flyer, The Northland! This luxurious vacationland limited now goes daily throughout the season to Traverse City, Petoskey, Bay View, Harbor Springs, Mackinac Island, and other Michigan resorts. For further information, and for free illustrated booklet "Michigan in Summer," phone or write

City Ticket Office, 116 Monument Place, Phone Riley 7353

PENNSYLVANIA RAILROAD