

Married in Rites at Church

Miss Virginia Rhodes, daughter of Mr. and Mrs. John F. Rhodes, 144 West Forty-fourth street, became the bride of Robert H. Greeley at 4:30 Saturday afternoon at Tabernacle Presbyterian church.

The service was read by the Rev. J. Ambrose Dunkel, pastor, before an altar banked with palms and ferns and lighted with cathedral candles. Baskets of roses were also used in decorating the church.

Mrs. C. H. Eberhard, organist, played a program of bridal airs preceding the ceremony.

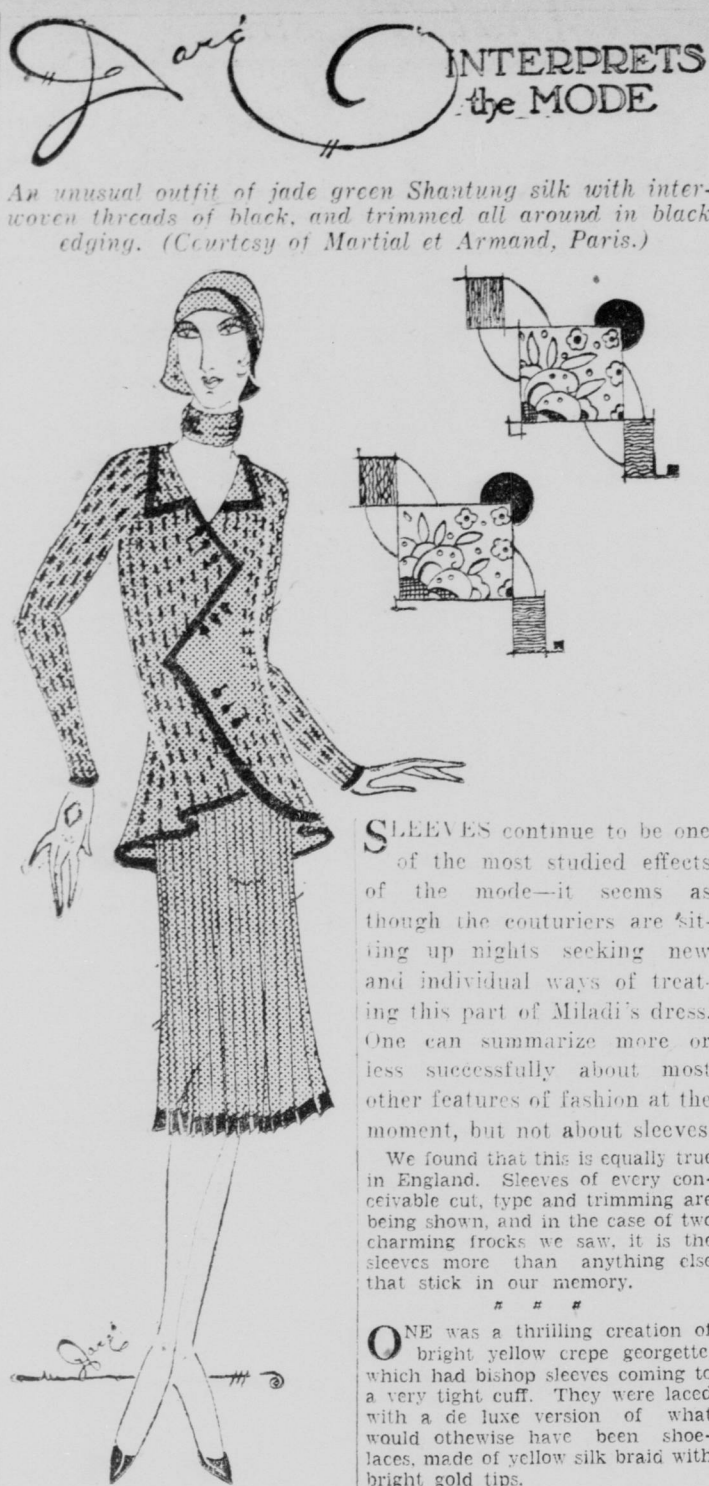
The bride was attended by Miss Virginia Greeley, who wore a green chiffon gown and a hairband that matched. She carried a shower bouquet of sunburst roses. George Hillemeier Jr. was best man.

The bride, who was given in marriage by her father, wore a gown of pink chiffon trimmed with tulle and a large pink picture hat. She carried a shower bouquet of pink roses and delphinium.

A reception at the home of the bride's parents followed the ceremony. Mrs. Rhodes receiving in an ensemble of printed chiffon. Their corsages were roses and sweet peas.

Mr. and Mrs. Greeley have gone on a motor trip through the east, the bride traveling in a chocolate brown and chartreuse ensemble.

Among guests from out-of-town were Dr. and Mrs. J. W. Rhodes, Attica; Dr. and Mrs. E. C. Rhodes, Chicago; Mr. and Mrs. William Althaus and Lowell Graham, Des Moines; Mrs. Lillie B. Rhodes, Mr. and Mrs. Russell Morris and Miss Jeanette Graham, Shelbyville; Mrs. E. H. Keltner, Tampa, Fla.; Mr. and Mrs. Albert Greeley and Mr. and Mrs. Ray Greeley, Muncie; Mr. and Mrs. Leslie Greeley, Yorktown; Miss Mary Louise Lamore and Miss Ruby Pasho, Anderson, and Mr. and Mrs. Harry Stonecipher, Muncie.



Girl Scouts' New Pool Dedicated

Formal dedication of the new swimming pool at Camp Delwood, the Girl Scout camp on the White river, was held Saturday afternoon before an audience of several hundred persons, including the Girl Scouts, their parents, officers of the Scout organization and city officials.

The ceremony was accompanied by swimming races and fancy diving exhibitions by Girl Scouts. Miss Euphrasia Donnelly, a member of the 1924 Olympic swimming team, and Miss Dorothy Redding gave an exhibition of swimming and water stunts.

Mrs. E. Blake Francis, Girl Scout commissioner, presided. Mayor L. Ert Slack praised the recreational spirit and commended the work of the Girl Scouts. Dr. Herman G. Morgan, secretary of the board of public health, discussed swimming as an aid in the development of health. Others who talked were David C. Liggett, executive secretary of the community fund, and Earl Kiser, chairman of the camp building committee.

Ropes of green and white ribbons decorated the pool, and at a given signal 100 Girl Scouts plunged into the water. This was followed by stunts.

Kokomo Girl and Burlington Man Are Married

The marriage of Miss Beulah Kirkendall, daughter of Mr. and Mrs. L. C. Kirkendall, Kokomo, and Norman D. Miller, Lafayette, son of Perry Miller, Burlington, took place at the Main Street Methodist Episcopal church at Kokomo at 2:30 Sunday afternoon, the Rev. Benjamin F. Kencall reading the service.

Mrs. William White, sister of the bride, was matron of honor. Miss Bernice DeLong, Miss Lucille Trent and Miss Mildred Trent were bridesmaids. Joan Hufty was flower girl and Bobby Catron ring bearer.

Forrest Miller, Mulberry, brother of the bridegroom, was best man and the ushers were William White, Kokomo; Garretson Yeager, Lafayette, and Howard Miller, Burlington.

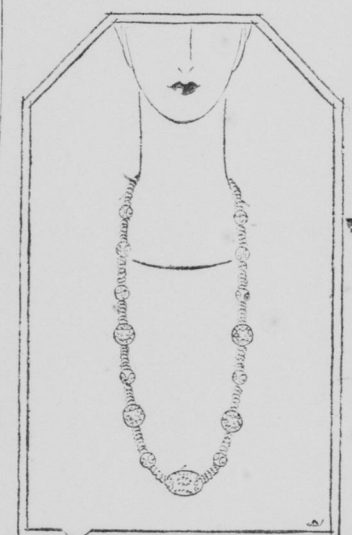
Una Kern of Bloomington Is Bride of Bedford Man

Cascade Gardens, Bloomington, was the scene at high noon Sunday of the wedding of Miss Una Kern, daughter of Mr. and Mrs. Dennis Kern, Bloomington, to Paul Flinn, son of Mr. and Mrs. David Flinn, Bedford. The Rev. Denbro, pastor of the Free Methodist church, Bloomington, read the service. A bridal dinner at the home of the bride's parents followed.

Out-of-town guests included Mr. and Mrs. George Cornelius, Mr. and Mrs. Arthur Cornelius and daughter, Indianapolis; Mr. and Mrs. William Wagoner, Danville; Mr. and Mrs. Raymond Kern and family; Mr. and Mrs. Ed Kern, Mrs. Jessie Jacobs, Mr. and Mrs. Ed Bluff and family, all of Bedford; Mrs. Fred Falce, Mr. and Mrs. Whit Baker, Williams; Mr. and Mrs. Foster Kern, Mr. and Mrs. Dennis Kern, the Rev. and Mrs. Denbro, Bloomington.

Mr. and Mrs. Flinn will make their home near Bedford.

SMART BEADS



Large, carved wooden beads interspersed with smaller ones and carved roudelles in magenta, green, blue and gray, fashion a colorful necklace just imported from Paris.

Ohio Girl Is Elected New Sorority Head

Miss Mildred Lauderman, Hamilton, O., was elected national president of Kappa Delta Phi sorority at the final meeting of the national convention held at the Hotel Severn Sunday.

Miss Louise Altum, Indianapolis chapter, was named national vice-president and Miss Ada Ritter, Milam, O., national secretary.

Other officers are: Treasurer, Miss Thelma Griefmeyer, Dayton, O.; monitor, Mrs. Joan Carr, Indianapolis; mistress of ceremonies, Miss Edna Abbott, Indianapolis; guard, Mrs. Mildred Krieling, Hamilton, O.; inspector, Miss Helen Weaver, Dayton, O.; and historian, Miss Mary Thomas Gammus, Louisville, Ky.

Voile Lingerie

Hand-made lingerie in printed voile, lace trimmed, is very summery looking. Worth uses a black and white voile for a stunning combination, with wide ecru lace trimming it.

Shirts for Women Riders

In all wardrobe items for the woman rider, new and attractive styles are shown this year. Shirts in particular are diversified and several pretty fabrics are worn, including some new silks with stripes, small checks and plaids like gingham; silk crepes and twills printed with dots and little geometric patterns, and fine printed cottons, linens and the synthetic silks.

LOVELY LADY SUMMER COAT

—By Dare

Figure 1 is your material, which you mark and cut as indicated. A to B, 4 inches; B to C, 18 inches; C to D, 36 inches; D to E, 5 inches; E to F, 3 inches; F to G, 5 inches; G to H, 3 inches; H to I, 5 inches; I to J, 8 inches; J to K, 14 inches and K to L, 4 inches.

Going back again to the beginning, note that the two places marked X are 14 inches in from the edge, and that between each X is 12 inches.

Sleeves and Collar

Now see Figure 2, and cut as indicated, which will give you both sleeves, scarf-collar, and triangular back incrustation.

Figure 3 is how you put your scarf collar on to Figure 4, which is the 36-inch piece of material. And A on Figure 4 indicates the 8-inch pieces you sew on either side.

Now see Figure 5, which is all your material as you have just seen it, and measure from A to B, 18 inches, and cut off straight down to C. Measure the same on the other side from D to E, 18 inches, and cut off straight down. The two pieces you cut off are for the fronts, you see, and the remaining piece with the triangular incrustation is for the back.

Body of Crepe and Satin

By the way, the body of your coat can either be crepe and the triangle satin, or vice versa.

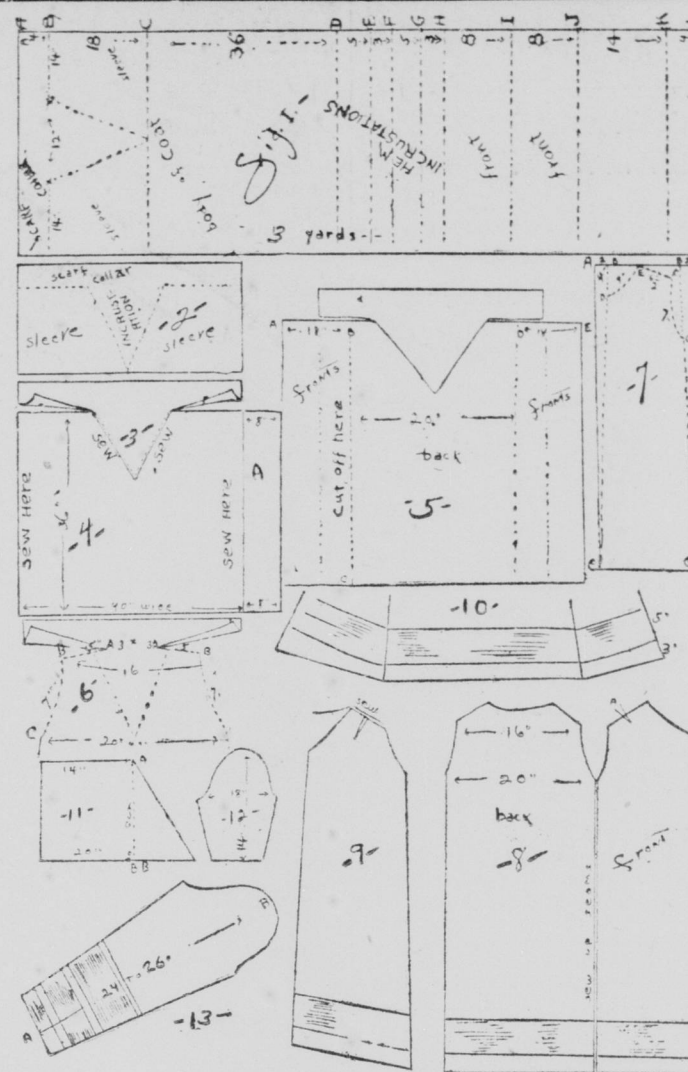
Note Figure 6. Starting from the exact center, indicated by X, measure 3 inches on either side to A. Now cut on a slight slant down from A to B on either side, 5 inches, and then from B to C on a slight curve 7 inches. The distance from B to C will be 16 inches and from C to C will be 20.

Next, the fronts, indicated by Figure 7. Measure from A to B at the top, 2 inches in on either side, and cut down to C on a long slant as indicated. Next measure from D to E on a slight curve, 9 inches, and then from E to F on a slight curve, 7 inches. D starts about 4 inches down from the top.

Some Sewing Now

Now sew the two fronts to the back, as indicated on Figure 8, take a 1½-inch dart in the shoulder seams of the front at A, and then sew up your shoulder-seams, as indicated by Figure 9.

Then sew the scarf collar, which is cut all in one piece with the back incrustation, around the neck of the front, and now for your hem incrustations. Before we tackle them, though, let me mention that if you



THIS coat is made of reversible crepe satin, utilizing both the crepe and satin sides of the material. It takes three yards of 40-inch wide material.

do not like the front edges of your coat to be on the bias, even though it is straight, but remember that this will make your coat four inches narrower when it comes to wrapping it around your hips.

Incrustations are very simple. You are going to put two around the bottom of your coat, using for the widest one the side of the material that matches the incrustation above, and the narrow one to match the body of your coat. Just sew these in strips, with the seams on the wrong side, around the bottom of your coat. For these you are using the two 3-inch strips and the two 2-inch strips, and when sewn on they will look like Figure 10.

Sleeves

AND so we will go to the sleeves. Take the two pieces that are shaped like Figure 11, even them off from A to B, and cut into a sleeve shape like Figure 12. Now, add incrustations of different widths and different sides of your crepe satin, until the sleeve is as long as you wish it to be from A to B on Figure 13, which will be about 24 to 26 inches. Take these strips from the 14-inch wide piece of material you have left.

Voila, your coat! It is finished save for the lining, which might well be a heavyorgette, which serves as a way of finishing the hem, the edge of the sleeve, and the front of your coat. Add further incrustations at either end of the scarf, which you can make any length you wish.

July Furniture Clearance News!

Almost every piece of furniture in our original stock has been radically reduced for clearance!

Why!

Because we are getting ready to open a fine new furniture department on the sixth floor. For weeks carpenters and painters have been working, and for months before that we have been planning. Quantities of fine new merchandise have been selected. Some of it is in, and now we must make room for the rest. Not one piece of old stock must be left!

Therefore!

We have marked our entire original stock at prices which will move it immediately! Here is a rare opportunity to get wonderful values! We have a large assortment of living room furniture, including sofas, chairs, tables, desks and other occasional pieces. Also lovely bedroom and dining room furniture. Many of the pieces are individual and can not be duplicated.

Value and Fashion!

All fine fashionable merchandise in perfect condition—all from our regular stock—yet it must go to make room for the new!

Typical Values Clearance Sofas	Typical Values Clearance Chairs
Sofa in Denim, \$80 Carved base and panels. Covered in denim. \$80; but you may order any cover you like; cost to vary with quality of cover.	Tuxedo Chair, \$75 Comfortable lounging chair. Upholstered in black mohair; back and seat cushion in figured fringe.
Sofa in Velour, \$195 Graceful thin-arm type in gold velour; reversible cushions of figured fringe. Other sofas in a variety of designs, spring filled or down filled; in denim, tapestry, damask, fringe or velour. All built to Ayres' standards! No two alike!	Fireside Wing Chair, \$49 Restful type, in tapestry denim; neutral color with small neat figures. Other fine upholstered chairs... lounging types... open arm types... some high backs. In tapestries, damasks, velours and fringe. Individual models.
\$95 to \$250	\$24.50 to \$150 —Ayres—Furniture, sixth floor.

Seize This Opportunity While Selections Are Complete! Ayres' Deferred Payment Plan Is Available —Ayres—Furniture, sixth floor.

L. S. AYRES & Co.

YOUR CHILDREN Selfish Child Is a Problem

BY OLIVE ROBERTS BARTON

Nothing worries us more than the selfish child.

We can't understand how Edna may get all the rides on the tricycle, or how she has the nerve to gobble up five of the ten cakes we sent out to the little crowd of playmates, or how she manages to bluff us into buying more and better clothes on a shopping trip than we buy for Birdie and Louise together.

But she does it. She has a method all her own of coralling about every good thing there is in the house, and out of it, and with her big blue eyes, calmly regards the world as hers. Selfish!

The worst of it is, she was born that way. We saw it in her when she was a baby.

Born That Way

As early as she could walk, she grabbed all the dolls, whether they were hers or not, and screamed herself into a purple tantrum if anyone dared to take them away.

Her Ways Don't Change

We've looked in all the books and loved all the good advice about how to teach her generosity by giving, and yet here she is, the same selfish, getting all the rides and taking all the dresses.

She continues to be entirely unconscious of it all, looks out eagerly and calmly with her blue eyes, doesn't know what it means to cry, scarcely, is not sensitive, is smart, bright, likeable and even affectionate, takes bumps and hurts as a matter of course, never feels sorry for herself, and possesses a dynamic strength and vitality that seems never to tire.

Always 'on the Job'

Always on the qui vive for something to do, depending as she grows older, more and more on things outside the home to interest her.

In plain words, we must admit, we don't understand her at all. The other little girls are so generous and thoughtful and sweet, but Edna May, we never have been able to conquer. Her will is stronger than our own. Selfish from the word go, she declares. But is she?

The little girl I have just described, if you happen to have one like her, is not selfish. Not in the sense we generally mean. She is a pure type of "extravert." And, regardless of what we feel, extravers usually turn out to be wonderful, useful people.

For they seldom develop a carload of fears and complexes and feelings. They are excellent leaders, possess remarkable executive ability and if their lives can be guided (not their will broken) into useful channels, we need them sadly.

The thing we call selfishness usually shapes itself later into other things. Go-getters these extravers will always be—but their good sense will develop a certain generosity and regard for others as they grow older.

Don't be too hard on the Edna May. Don't try to break them. Just be patient. Your little talks will tell some day. But I have to admit, they are not easy to bring up.

Linen Togs

Very Parisian is a new golf outfit in raspberry red linen, with circular skirt and matching shorts, sleeveless white linen tuck-in blouse and linen cardigan stitched in white for a four-inch banding.

Youthful Cape

The cape collar for evening is one of youth's favorites. A pale pink chiffon dance frock with irregular skirtline features a rear cape collar that reaches below the neckline. It gives a most feminine look to the flapper.

Fancy Cuff

Long sleeve of a navy blue roma travel frock has four tiers coming out from underneath other from the elbow to the wrist. Each is piped in beige.

Church Elects New Officers at State Parley

United Presbyterian church of Indiana held its forty-seventh annual convention at Scotland, Ind., June 27-30. Mrs. Walter B. Davidson, Indianapolis, was elected state president of the Indiana Presbyterian. Mrs. C. E. Binkley, Indianapolis, has been named corresponding secretary.

Mrs. E. A. Daum, also of Indianapolis, who was a delegate to the national Presbyterian at Philadelphia, Pa., June 23-26, gave a report of the nation convention. Mrs. Davidson is also president of the Women's Christian Temperance Union of Marion county. Mrs. M. E. Race, Indianapolis, was chairman of the committee on recommendations for the Presbyterian.

PAGEANT HEAD



Mrs. Edna Pauley

The pageant being given on the Fourth of July by members of the Indiana Indorsers of Photoplays is in charge of Mrs. Edna Pauley.

One-Piece Uppers

Many new travel coats and dress coats also have their sleeves mounted in one piece with a yoke that extends across the back of the garment or the front and back as well as fashioning the cap part of the sleeve.

Deep Yoke

A white flat crepe ensemble, printed in fine traceries of navy blue, has a deep yoke of plain white, both front and back to which the printed fabric is joined in modernistic set-back manner.

Brown Jewelry

Imported costume jewelry makes much of brown. Beads, stones and woods are all employed. The 18-inch necklace is the preferred one. This jewelry is especially good for costumes in the modish nasturtium colors.

Entertain Husbands

Members of Delta chapter, Alpha Omicron Alpha sorority, entertained their husbands with a chicken dinner and bridge party Saturday night at the home of Mrs. Christian Olsen, Millersville road.

Sorority to Meet

Members of Iota Kappa sorority will meet tonight at the home of Miss Florine Musselman. They held a swimming party Sunday afternoon at the home of Mrs. Randle Willis, Exeter park.