

CITY PLANS TO END POLLUTION IN WHITE RIVER

Propose to Use Washington Interceptor to Save McClure Beach.

A. H. Moore, city engineer, today announced plans for prevention of sewage pollution of White river to permit use of the McClure bathing beach this summer.

Sewage from the Broad Ripple area which flows into White river above the beach will be pumped into the Washington boulevard interceptor and the overflow chlorinated, Moore said.

The auxiliary pumping system at Fifty-sixth and Meridian streets eliminated the pollution sufficiently to permit opening of the beach last summer. Use of the pumping apparatus is only a temporary measure, Moore declared.

Project Delayed

Construction of the Fall Creek interceptor was designed to relieve the condition but the sanitary board had to readvertise for bids when the contractors price ran above the engineer's estimate. The board has ordered the bond issue increased from \$30,000 to \$40,000 for the interceptor from Talbott to Ruckie streets.

City Engineer Moore expects to finally approve a plan for the Broad Ripple and Riverside area main sewer system within a few days. The sanitary board engineers have been studying the north side sewage problem for two years with the view of providing additional facilities.

It is understood that the city engineer plans to modify the plan of Charles H. Hurd, consulting engineer, who has been working on plans for the Broad Ripple project.

Slack Inspects

B. J. T. Jeap, sanitary commissioner, has also made a thorough study of the situation. Mayor L. Ert Slack recently viewed the proposed route with Hurd.

A conference to finally approve the plan is expected to be held within a few days.

No engineering estimate of the cost has been worked out, but it is likely that it will be about \$400,000.

WAR ON UNDESIRABLE FISH

State Department Removes Gar, Carp From Lakes.

Four special game warden crews are now engaged in removing gar, dogfish and the larger carp from lakes throughout the state it was announced today by George N. Mannfield, superintendent of the fish and game division of the state conservation department.

Floating gill nets are used and at night some of the fish are speared. The department removed more than 5,000 undesirable fish from other waters in this manner during the last three years, Mannfield declared.

LEAGUE TAKES CENSUS

Ports Are Being Investigated to Promote Trade.

GENEVA, Switzerland, May 3.—The League of Nations has just begun the first world-wide census of all ports open to international trade. The investigation is being pushed to the farthest corners of the earth and the register of such ports will hereafter be kept strictly up-to-date. This is one of the many steps now being taken by the league to bring into force its recent international convention for the establishment of uniform world-wide commercial, industrial and trade statistics.

For
Real Estate Management
Fletcher Trust Banks

G & J TIRES
on Liberal Pay Plan
SELIG TIRE CO.
23 South East St.

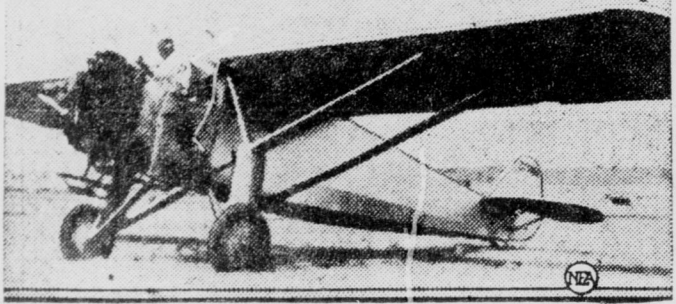
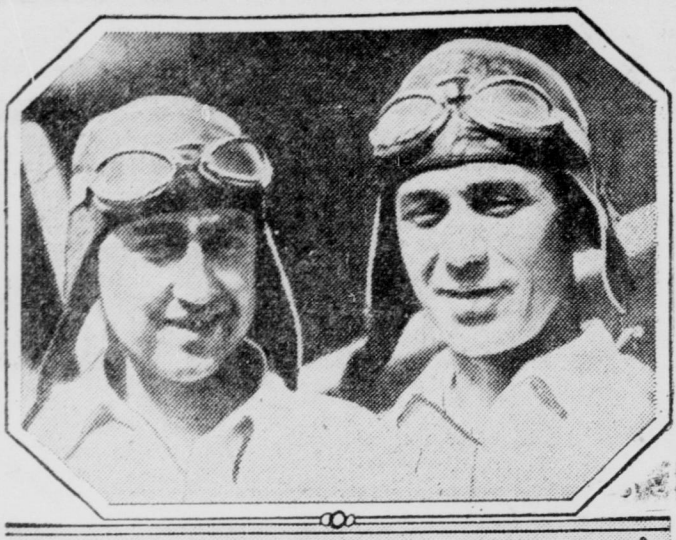
SILVER FLASH
ANTI-KNOCK
—for today's higher
compression motors.

WEEK-END
EXCURSION
AROUND TRIP FARES

Road Trip to any Union Trade
point for the regular one-
way fare plus 10 cents. Trips
on sale every Saturday and Sun-
day. Good on returning and Sun-
day cars on country points ex-
cept 100 miles. Motorists, Mar-
tinez, Valley Flyers,
Call Riley 1501 for full
information.

UNION
TRACTION

Seek New Endurance Mark



An attempt to break the record of the tri-motored army plane, Question Mark, of 151 hours in the air is to be made by two Fort Worth, Tex., fliers. The single motored Ryan monoplane (shown here) will be piloted by Reg Robbins (upper right) with James Kelley (upper left) as relief pilot. The ship will be refueled in the air from another plane piloted by Captain Bill Ponder.

LUMBER GAINS AS PRICES AND DEMAND RISE

Industry Faces Optimistic Outlook: Northwest Is Prosperous.

By United Press

PORTLAND, Ore., May 3.—The Pacific northwest, through its timber, is more prosperous by approximately \$5,000,000 than it was a year ago, and if lumbermen will be reasonable in production, a similar increase probably will be noted in the next year, it was declared here by C. S. Keith, president of the Oregon-American Lumber Company and one of the largest timber operators in the United States.

The timber magnate's statement is the most optimistic given out here for at least six years. It was in 1923 that timber stocks in this vicinity started to pile up, and it took five years, or until last April, for holders to start liquidation.

There are a number of causes for the greatly improved tone in the lumber trade, Keith explained. Foremost is that the supplies of the retailers have become exhausted, due to liquidation of the last year, so that the general consumer is virtually dependent on production for his needs. Another is that the southern pine supply is near the exhaustion point.

The effect of this liquidation has been to increase the value of timber \$4.50 a thousand feet since last April. This increase has been

gradual, with numerous small advances, and has increased the value of timber from \$45,000,000 to \$50,000,000 since that time.

The price has advanced \$1.50 a thousand feet since Jan. 1, Keith said, sending values of \$15,000,000 during the three-month period. And it is still climbing, he asserted.

"The situation experienced the last five or six years has been identical to the one in 1927," Keith said. "There were enormous supplies of timber on hand that it took five years to liquidate."

In 1898 the supply had been liquidated and good prices were received for nine years, until 1907, when the money panic occurred.

"The present lumber panic started in 1923 and did not start to abate until about a year ago. How long we will realize good business depends almost entirely on how the lumbermen handle production."

"The price of timber last April was the lowest ever experienced. It started to climb then and at the end of the year was \$3 a thousand feet higher than it had been in April. Since that time it has advanced \$1.50 a thousand."

STONE RITES SUNDAY

Ceremonies at New St. Peters Lutheran Set.

Ceremonies for the laying of the corner stone of the new St. Peter's Evangelical Lutheran church, Temple avenue and Eleventh street, will be held Sunday at 3 p. m.

The edifice will be constructed of dark cloister brick and trimmed with Bedford stone. It will seat 420 persons and will cost approximately \$53,000 completely furnished. The Rev. William Nordstreck, pastor of the church, will lay the corner stone.

The first St. Peter's church was built in 1895 at the corner of Brookside and Jefferson avenue. In 1925 a parsonage, schoolhouse and teachers' residence combined was built at Temple avenue and Eleventh street, the site of the new church. Since then the congregation has held its meetings in the assembly hall of the school. A program will precede the laying of the corner stone.

SHOES



All Styles;
All
Sizes

On Credit

For the
Entire
Family



\$3.95 to
\$9.95

Why wait
when you can
pay 'charge
it'?

PAY AS YOU WALK

DAVIS Credit Shoe Store

236 Massachusetts Ave.—First Block

TRY A WANT AD IN THE TIMES. THEY WILL BRING RESULTS.

KAY—"Stores From Coast to Coast"

Tomorrow, Saturday, Will Be a Great Day at Kay's for We Are

Celebrating the Opening of Our 37th Store!

—Growing bigger and better! In order to fittingly celebrate the occasion of our 37th store's opening we are offering special celebration values that will astound you!

'BONDED' DIAMONDS

A powerful demonstration of Kay's greater value giving by reason of its nation-wide 37-store buying power. Kay Bonded Diamonds are constantly increasing in value—plus the joy and satisfaction of wearing a sparkling gem and the assurance that you can get your money back at any time. Remember, Kay guarantees to buy back your diamond, just as agreed.

"Your Promise to Pay Is Good With Kay"

Pay Only
37c Down!

Our Regular \$20
Genuine "BONDED"
DIAMONDS
\$9.37

A brilliant, sparkling gem, the beauty of which is set off by a gorgeous mounting of 18-kt. solid white gold. Many beautiful hand-engraved styles.

37c Down!

These diamonds are of excellent color. Each is distinctive in a white gold mounting of delicate engraving. Don't fail to see it!

50c a Week!

Our Reg. \$125 "Bonded" Diamonds \$87.37	Our Reg. \$50 "Bonded" Diamonds \$37.37	Our Reg. \$100 Cluster Bonded DIAMOND \$67.37
--	---	---

Exquisite solitaire of exceptional brilliancy. Kay will buy back for \$87.37.

Hand-engraved 18-kt. solid white gold mounting. Bonded. Kay will buy back for \$37.37.

7 Beautiful bonded diamonds set to look like a huge solitaire. Kay will buy back for \$67.37.

—Just Received!—On Sale for the First Time Saturday!
Ladies' and Gents' Wrist Watches

Take Your Choice—**\$9.37** Very Latest Designs!

37c Down!

Dainty New Models Beautifully Engraved!

Every Watch Fully Guaranteed by the Makers and Ourselves

Full Jeweled, Accurate and Dependable

37c Down!

Mannish Models in Plain or Engraved Cases!

SPECIAL!

"Rogers 1847" Silverplate
With Beautiful Utility Serving Tray
\$26.75

Knives With Stainless Steel Blades!

26-piece "Rogers 1847" silverplate set in hand-some case. Knives have stainless steel blades.

37c DOWN!

SPECIAL!

Crystal Ice Tub
AND
Silverplated Tongs
EXACTLY AS PICTURED
\$1.97

Six inches high, 24 inches wide. Hand-etched, floral design with silver-plated handles. Every home should have one.

ONLY 7c DOWN!

Genuine
"Elgin" Watch
Knife and Chain
\$14.37

Elgin's thin model pocket watch in white or green gold filled case and knife and chain to match.

ONLY 37c DOWN!

KAY
JEWELRY COMPANY
137 W. Washington St.
The Indiana Theatre Is Opposite Us
OPEN SATURDAY EVENINGS
37 Stores From Coast to Coast