

SURVEY SHOWS MOTOR SAFETY IS ON UPGRADE

Auto Mortality Rate Up
Little, Despite Great
Increase in Cars.

By Times Special
WASHINGTON, Nov. 22.—Aided by improved traffic devices and stricter police regulations, motorists are becoming less of a menace to life in proportion to the steadily mounting number of passenger autos and trucks.

This was disclosed today, when the Department of Commerce announced that reports from 77 cities showed an increase of but 4 per cent in deaths from auto accidents for the year ended Nov. 3, 1928, a total of 7,226 persons was killed, as compared with 6,983 in the corresponding period of 1927.

Based on rates per 100,000 of population, the 1928 rate was 22.1 per cent and the 1927 rate 21.7 per cent.

This increase in the percentage of deaths, however, is offset by the fact that a gain of six per cent was recorded in the number of cars. The tabulation was made by an insurance company in thirty-three states.

Camden, N. J., continued to hold the record of having the highest traffic death rate in the country during the year ended Nov. 3, with 54.2 deaths per 100,000 of population, nine points higher than the city's 1927 rate. New Bedford, Mass., with but 6.7, had the lowest traffic death rate.

Rates for other important cities were: New York, 17.2; Cleveland, 23.8; Baltimore, 13.9; Birmingham, 14.9; Cincinnati, 27.0; Columbus, 21.0; Denver, 14.0; El Paso, 18.3; Fort Worth, 21.5; Indianapolis, 20.8; Memphis, 17.4; Pittsburgh, 20.7; San Diego, 31.9; San Francisco, 20.3.

Dial Twisters

Central Standard Time

THURSDAY
—WJR, Detroit (750 Kilocycles)—
6:00—U. of Michigan hour.
—NBC System (WJZ, 760 Kilocycles)—
7:00—L. & P. serenade; McClelland Barclay, artist.
8:30—Maxwell concert.
—NBC System (WEAF, 660 Kilocycles)—
7:30—Hoover sentinels.
8:00—Hubert singing.
9:00—Haley Stuart hour.
—WNYC, New York (530 Kilocycles)—
7:30—New York Bar Association dinner.
—WLW, Cincinnati (700 Kilocycles)—
8:00—A Garden of Music.
—Columbia Network—
8:00—Sonora hour.
9:00—Simmons Show Boat.
11:00—Guy Lombardo's orchestra.
—WSB, Atlanta (740 Kilocycles)—
6:30—Biltmore concert orchestra.
—WJR, Detroit (750 Kilocycles)—
9:00—WJR Detroit Cotton Pickers.
—WTAM, Cleveland (1070 Kilocycles)—
9:00—Dance program, two hours.
—WCAU, Philadelphia (1170 Kilocycles)—
10:00—Piccadilly revue.

WLW (700 Kilocycles) CINCINNATI
THURSDAY
P. M.
3:30—Novelty stations.
4:30—Tea time, trio.
5:00—Office boys.
5:30—Livestock reports.
6:15—Market reports.
6:30—Dynamite dinner.
6:45—Swiss Gardens Orchestra.
6:55—Comet and the Indiana.
7:00—Mel Doherty and his French-Bauer orchestra.
7:00—Lehn and Fink.
7:30—Champion spikers.
8:00—A garden of music.
8:30—Maxwell House Coffee concert.
9:00—Longine's correct time.
9:00—Crosley Cossacks.
9:00—Weather forecast.
9:00—Mel and Dell, melodious.
10:30—Swiss Gardens orchestra.
11:00—Showbox orchestra.
11:30—Swiss Gardens orchestra.

CROSLEY RADIO
ON CREDIT
ELECTRIC 55-60
BATTERY 35-55
DOWN MOTOR TIRE
12 NEW YORK ST.
OPEN NIGHTS

New Steinite All-Electric Radio Set Passes Tests With Flying Colors

Six-Tube Outfit Offered in
Five Models; Is Rugged
in Build.

BY TIMES RADIO EDITOR

During the last week, tests have been made on the new Steinite all-electric radio receiver. This year the Steinite factories are building but one chassis, a six-tube radio frequency set that is offered in five table and console models. These sets come equipped with either dynamic or air column speakers, which may be had at the purchaser's option.

The new Steinite has several features including a built-in power pack that is readily adjustable for average line voltages. This adjustment consists of a series of pin jacks which are connected to the various lead-offs from the primary of the power transformer. It is adjustable to line voltage from 85 to 135 volts. This feature in the Steinite for this year is said practically to have eliminated burned-out tubes.

Times Out Easily

The set is operated by a single illuminated dial and volume control. With the aid of a compensator in connection with the volume control, one is able to tune out many stations that cause interference due to heterodyning. Stations are separated easily within ten kilocycles and the volume is ample to fill a large house.

Monday night we heard for the first time this year, Mexico City, coming in just above WJZ on the dial. While the volume of this southern broadcaster was faint, nevertheless, after listening to a dramatic sketch for twenty minutes we were able to hear the station announcement clearly. During the week stations were turned in from coast to coast, including KFI, Los Angeles.

Without aid of an aerial, stations up to 1,000 miles were heard with splendid results. Several nights during the week more than fifty stations were tuned in. During one, our log reached from WJZ, New York, to KKI, Los Angeles, and from WBAP, Ft. Worth, to Canada.

Chassis Is Rugged

The chassis is of rugged construction. Three extra heavy variable condensers are mounted on one shaft as big as your index finger. The entire condenser assembly being protected by a steel cage. The chassis is mounted on a steel subpanel, and it is said that once the set is placed in adjustment at the factory there is practically no chance of even rough treatment throwing it out of adjustment.

All Steinite cabinets, in both table and console models, are of black walnut veneer, beautifully finished in duco. All Steinite models are equipped with a two-pin jack for reproduction of phonograph records through the dynamic speaker.

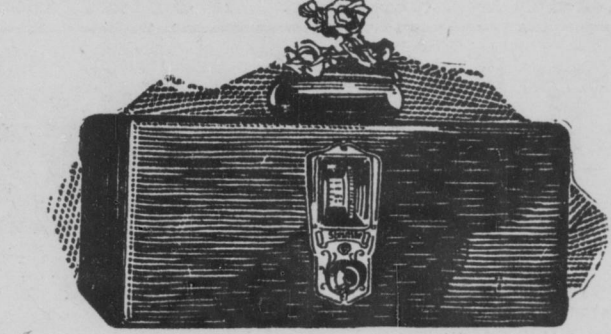
The interior finish of the set is as neat in appearance as the exterior, being finished in gold lacquer. Steinite radio sets and speakers are distributed in central Indiana by the Peerless Electric Company, 118 South Pennsylvania street, and are sold through eight Indianapolis dealers.

Real buys in radios and equipment can be found in the want ads of tonight's Times. Also expert radio service men. Read these ads under the classification of Radios and Equipment.

THERE'S A DIFFERENCE

Majestic

ALL-ELECTRIC RADIO
ASK YOUR DEALER



Make of Set—Steinite.

Number of Tubes—Six.

Type of Tubes—Four 226 (radio amplifiers); one 227 (detector); one 171A (power tube); one 280 (rectifier).

Cabinet—Table model, No. 265.

Antenna—Outside, about eighty feet.

Speaker—Jensen dynamic.

Tuning—Single illuminated dial.

Power Supply—Operates at 25 to 60 cycles, 90 to 130 volts, alternating current.

Fishing The Air

All references are Central Standard Time.

THE RCA Educational hour, the first half of which, called "Fairies in Music," is designated for pupils from grades three and four, and the latter half, entitled "Flute and Clarinet," for the instruction of the seventh, eighth and ninth grades, will be presented under the direction of Walter Damosch through the NBC system, Friday morning from 10 to 11 o'clock.

The most inspiring pieces of popular, classical and operatic music will be grouped into a "Musical Thrill" for the Chicago Daily News fans, who tune in WMAQ Thursday night. The News concert orchestra, together with a popular mixed quartet and soloists, will present the "thrill" as the Steinite hour between 9 and 9:30 o'clock each Thursday night.

Hank Simmons and his showboat will be the scene of a comedy drama by Charles S. Bird, entitled "Lucky Gulch" which will be presented by the boat's cast headed by little Maybelle, Thursday night, at 9 o'clock. After an introduction by Hank Simmons and his entertainers, he will present this lively comedy-drama in three acts.

"Waiting for the Robert E. Lee," by Muir, will open the Weekly Halsey, Stuart hour to be broadcast through the NBC system Thursday night at 9 o'clock.

Guy d'Hardelot's song "Because" will be played by the string trio, and the program continues with a xylophone solo, "Molly on the Shore," by Percy Grainger; "Les Sirens," by Waldeuter; Victor Herbert's "Al Fresco" and the period closes with Carroll's "I'm Forever Blowing Bubbles."

HIGH SPOTS OF THURSDAY NIGHT'S OFFERINGS

8:00—WOR-WABC-Columbia Network—Sonora hour.
8:30—WJZ-NBC Network—Maxwell hour.
9:00—WABC-Columbia Network—Hank Simmons' Showboat.
9:00—WJZ-NBC Network—Mildred's Musicians.
7:00—WEAF-NBC Network—The Song Shop.

At least ten or more stations may be permanently added to the Columbia Broadcasting system and a west-to-east broadcast service inaugurated shortly, according to reports current in broadcast circles this week.

Some of the stations involved are located in Birmingham, Atlanta, New Orleans, San Antonio, Denver, Salt Lake City, Oklahoma City and a few more centers that have been clamoring for entertainment as available from large metropolitan studios.

Helen Clark, soprano soloist, will be the guest of the Maxwell House concert to be broadcast through the NBC system, Thursday night at 8:30. One of the numbers in which Miss Clark will be heard, Lee's "Out of the Dusk to You," has been rearranged by Rosario Bourdon, the director of the orchestra. Lucien Schmidt, cello soloist, contributes "Valse Bluette," by Black.

The Sonora hour, which will be broadcast from stations of the Columbia Broadcasting system at 8 o'clock Thursday night, features the baritone, Ivan Ivantsoff. His voice has been compared by W. J. Henderson, dean of American critics, to that of Chaliapin. Ivantsoff will sing Mouzargsky's famous musical satire, "The Song of the Flea," and the "Volga Boat Song."

The Hoover Sentinels and Honeymooners will be heard in a program of popular songs through the NBC system on Thursday night at 7:30. Opening the program will be "Dream House," the orchestra also will play "I Loved You Then as I Love You Now," the theme song of the motion picture "Dancing Daughters," the Spanish dance "My Toreador" by Padilla; and close the program with "All of the Time."

Radio manufacturers and dealers have one main question on their minds now that 1928's election day is history. The presidential race helped to sell radio. Thousands of sets were sold, as were many tubes and other accessories. But now they wonder if this election stimulus will take the wind out of the sails for Christmas.

Inquiry among leaders indicates that Christmas radio sales will be large despite politics, because there are millions of homes still without receiving sets. The outlook is bright for Christmas. Electric sets and dynamic loud-speakers are expected to lead the sales.

A program of old favorites will be given as a feature attraction in the midweek Federation Hymn Sing through the NBC system, Thursday night at 6 o'clock. The program will consist of the hymns which have been requested most often by the radio audience, and will be known as "Old Favorite Night."

McClelland Barclay, whose portrayals of the modern American girl have made him one of the foremost artists of the generation, will present his ideas concerning the beauty of American women during the Lehn and Fink Serenade to be broadcast through the NBC system, Thursday night at 7 o'clock.

In addition to Barclay's talk, the serenade will feature musical selections by a quartet of men's voices and by a novelty orchestra under direction of Jack Shilkret.

City Stations

WFBM, Indianapolis Power and Light Co. (1650 Kilocycles)

THURSDAY

Noon—Correct time, Lester Huff on studio program.

P. M.

12:30—Livestock market, Indianapolis and Kansas City.

12:35—Farm flashes, U. S. Department of Agriculture.

4:00—Tea time talk.

4:30—Auntie Sam's housekeeper's chats and radio recipes.

5:00—"Speaking of Dogs," Dr. J. C. Vance.

5:15—"What's Happening," late news from Indianapolis Times.

5:30—Chapter a day from New Testament, by Parker Wheatley.

5:45—Lieutenant Frank Owens, safety talk.

6:00—Santa Claus.

6:15—Longine's observatory time, courtesy Julius C. Walk & Son; weather forecast, Columbia Club orchestra.

6:30—Community fund program.

6:35—Newspaper, world events from time.

7:00—Auto hour, courtesy French Lick Springs Hotel Company.

8:00—Indiana Camera's Association talk.

8:05—Butler university program.

8:30—WFBM staff mixed quartet.

9:30—WFBM concert orchestra and soloists.

9:45—Studio features.

10:00—Dixon trio.

10:15—The Columbian; Longine's observatory time; weather forecast.

10:30—Dick Powell's orchestra.

WKBF (1400 Kilocycles) INDIANAPOLIS (Hoosier Athletic Club)

THURSDAY

A. M.

10:00—Recipe exchange.

10:15—Studio program.

10:25—Interesting bits of history, courtesy of Indianapolis public library.

10:30—Livestock and grain market; weather and shippers' forecast.

10:40—WKBF shopping service.

P. M.

8:00—Late news bulletins and sports.

8:00—Children's hour.

8:15—Dinner concert.

8:30—Bair's theater program.

7:00—Studio program.

7:45—Bridges and Ruth Slaughter.

8:00—Sink Grenadiers.

10:00—Roller skating marathon.

10:30—Indianapolis Athletic Club.

Chicago Dry Chief Recalled

By United Press
WASHINGTON, Nov. 22.—Prohibition Commissioner Doran today recalled Harry M. Bengler, acting chief dry agent of Chicago, to Washington, to act as instructor for prohibition agents in the field.

CROSLEY RADIOS,

\$5.00 Down

Fada Radios, 10% Down

Balance 1 Year

Chicago Jewelry Co.

203 E. Washington St.

CALL YOUR LOCAL DEALER FOR

STEINITE RADIO

DEMONSTRATION

\$15.00 Down—Balance Monthly

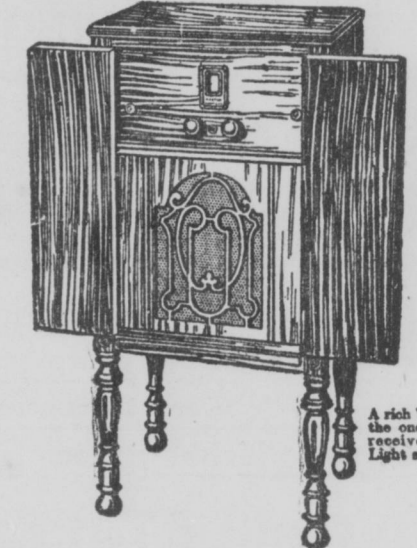
Public Service Tire Co.

118-120 E. NEW YORK ST.

Call Us for a Demonstration
ALL-AMERICAN LYRIC RADIO
AS LOW AS **\$15.00** Down BALANCE IN 12 MONTHLY PAYMENTS
CONSUMERS TIRE COMPANY
Lincoln 6063 303 NORTH DELAWARE STREET Lincoln 6063

All-American Mohawk Corporation LYRIC RADIO

And, of course,
Super
Dynamics!



Model 63
A rich Walnut console housing the one dial, six tube radio receiver. Built-in speaker. Light socket operation. Less tubes, \$137.50

For Permanent Satisfaction

ALL-AMERICAN Mohawk LYRIC Radios are more than a temporary triumph. The scientific principles upon which LYRIC Radios are constructed—the high state of perfection attained only through long years of experience and experimentation—assure the utmost in Radio and guarantee permanent satisfaction. Equipped with the original one dial

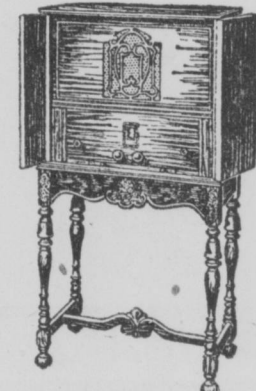
control. Simplified operation—startling realism—amazing volume. RADIO'S REALISTIC CLOSE-UP! Strikingly beautiful in design and finish. To know the supremesatisfaction of LYRIC performance—to fully realize the remarkable economy in the low prices quoted—see and hear these super-radios today. A wide variety of handsome models to choose from.

ALL-AMERICAN MOHAWK CORPORATION, Chicago.

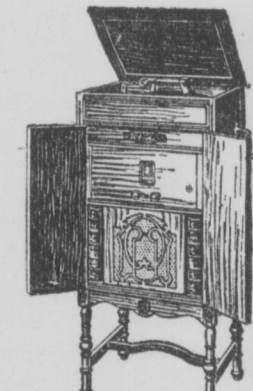
Distributed by
Illuminating Supplies Corporation
927 N. Capitol Ave.



Model 83
A rich Walnut console housing the one dial, eight tube radio receiver. Dynamic speaker. Light socket operation. Less tubes, \$219.50



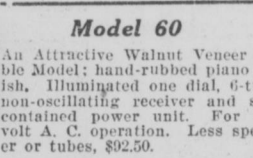
Model 85
A distinctive Burl Walnut console housing the eight tube, one dial, non-oscillating receiver. Built-in speaker. Light socket operation. Less tubes, \$195.00



Model 66
Radio Phonograph Combination. One dial, six tubes, non-oscillating electric receiver. Electric pickup. Built-in speaker. Less tubes, \$245.



Model 60
An Attractive Walnut Veneer Table Model; hand-rubbed piano finish. Illuminated one dial, 6-tube, non-oscillating receiver and self-contained power unit. For 110-volt A. C. operation. Less speaker or tubes, \$92.50.



Model 60
An Attractive Walnut Veneer Table Model; hand-rubbed piano finish. Illuminated one dial, 6-tube, non-oscillating receiver and self-contained power unit. For 110-volt A. C. operation. Less speaker or tubes, \$92.50.

Call Local Dealer for Demonstration
ALL-AMERICAN LYRIC RADIO
As Low as **\$15.00** Down
BALANCE IN 12 MONTHLY PAYMENTS
PUBLIC SERVICE TIRE CO.
Lincoln 5116 118-20 E. NEW YORK ST. Lincoln 5116

DYNAMIC
The Steinite Electric AC Radio is a unique value in this beautiful table model at \$75
with the
Steinite
ELECTRIC AC RADIO
NEW! With the splendid Steinite Electric AC Radio as a foundation, Steinite engineers have given Dynamic reproduction new meaning. Here is a glorious new voice that thrills! In a cabinet of fine wood, this great receiver—complete with Dynamic speaker—\$137.50.
Steinite dealers are pleased to give a demonstration in your home. Call on your nearest Steinite dealer.
\$75
DISTRIBUTED BY
Peerless Electric Supply Co.
118 S. Penn. St. Riley 2365.