

1 IN 10 VIOLATE TRAFFIC RULES, SURVEY SHOWS

Increase in Law Breaking Indicated Throughout United States.

Are you the one motorist in ten who was guilty of a traffic law violation in 1927?

And were you one of the motorists who helped to pour the \$20,746 into the city coffers, collected for motor fines?

An average of one out of ten motorists and truck drivers in Indianapolis was charged with violations of traffic laws during 1927, records of the Indianapolis police traffic department revealed.

Other cities in the United States report an average of one out of five motorists charged with violations of the traffic laws each year, according to the American Automobile Association.

Violations Increase

The compilation reveals that in eighteen cities violations in 1927 total 614,232, as compared with 77,940 in 1917.

While car registration in these cities increased but 326 per cent for the ten years, there was a 688 per cent increase in traffic law violations.

But seven cities showed a percentage of increase in car registrations greater than the gain in traffic violations.

They are headed by Indianapolis which increased the number of automobiles and decreased the traffic violations. Other are: El Paso, Los Angeles, Minneapolis, Worcester, Mass., Chicago and Denver.

Baltimore Leads List

Baltimore showed the greatest increase in violation of traffic laws, with a gain of 29.75 per cent in the ten-year period.

Police records show that 9,969 motorists paid \$20,746 in fines here during 1927; and that instead of the number of violations increasing as a result of an increase in the number of automobiles and trucks in the city, there was a decrease in violations of about 1,000.

In 1926 10,517 motorists were fined \$22,253.

Yet in 1928 there were approximately 6,000 less automobiles and trucks operating on Indianapolis streets.

License records in the secretary of state's office reveal that 106,263 passenger cars and 22,652 trucks were licensed in Marion county during 1927, and of this number a total of 6,000 belonged to persons living in the county.

Too Many Rules

In 1926 100,423 passenger cars and 22,146 trucks were licensed in Marion county.

Despite the increase in vehicles there were 1,000 less offenses reported, the records show.

Throughout the nation violations have been on the upgrade as a result of the legislation of hundreds of varying traffic rules which leave the motorist in a muddle.

Motor experts are advocating that all cities have uniform traffic ordinances and regulations.

DEDICATE PLAYGROUND ON 'DISCOVERY DAY'

Holy Rosary Italian Church to Hold Special Services.

Dedication of a parish playground at 9 a. m. Friday will open special services of the Holy Rosary Italian congregation to observe Discovery day.

A flag raising and patriotic songs will complete morning ceremonies. Evening services will include a parade with school children and the following Italian societies in the line of march: Society of Giuseppe Crippi; Society of Umberto Primo; Society of Queen Margherita, and the Sodality of Holy Rosary Church.

G. O. P. LEADER DIES

David Stouss Aided Campaign of Benjamin Harrison.

DANVILLE, Ind., Oct. 8.—Funeral services will be held Tuesday morning for David Stouss, 81, active in Republican politics and fraternal circles, who died Sunday after a year's illness. He was a Civil War veteran; served as Parke County clerk and for thirty years was a land, tax and claim agent for the Pennsylvania railroad. He aided in the nomination and election of Benjamin Harrison to the presidency.

"WHEN MY BABY WAS RUN DOWN"

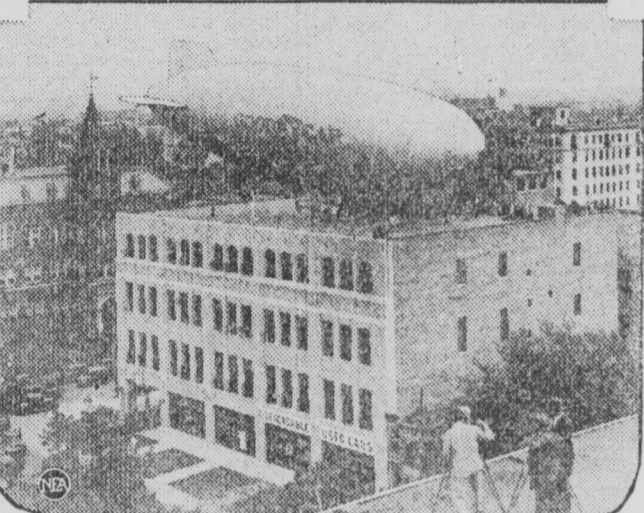
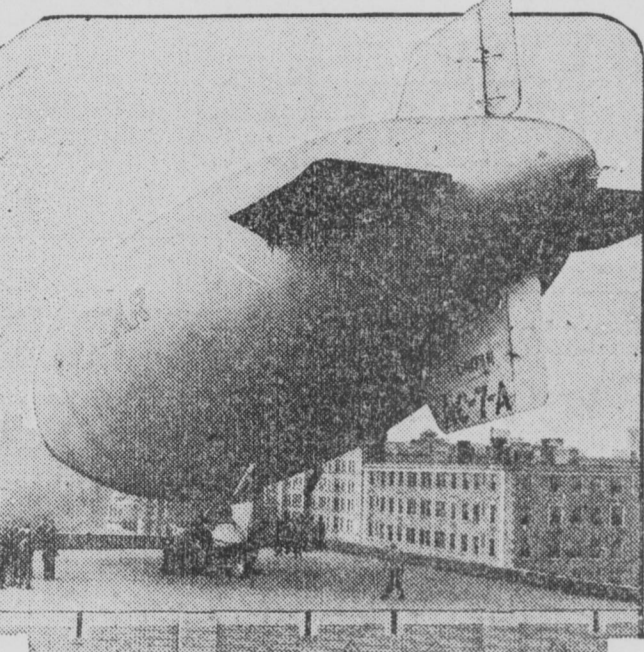
Father John's Medicine Helped Him Gain Weight



"My baby was sick, pale, and run down. One of my neighbors recommended Father John's Medicine and since giving it to him he has felt fine and has no colds. He has also gained weight. I am giving it to all my children." (Signed) Mrs. Rose De Pontland, Shirley, Mass.

For children who are pale and thin, who suffer from repeated colds, Father John's Medicine has proven its value for more than seventy-three years.—Advertisement.

Plenty of Parking Space



Here's the way modern dirigibles solve one of aviation's greatest problems—landing in a small space at low speed. At the top you see a closeup of the Goodyear Puritan, second smallest of its type in the country, on the top of a four-story building in downtown Washington. Lower photo shows the craft as it came to rest, within half its own length, after two unsuccessful tries.

CHURCH RETREAT HELD

Seventy-Five Protestant Laymen of Large City Congregations Attend.

Seventy-five laymen representing all the large Protestant churches in Indianapolis participated in a retreat Saturday in Melodeon Hall on the J. K. Lilly estate, Seventy-Fifth St. and College Ave.

Chairman Edgar M. Evans declared that the purpose of the retreat was to promote fellowship.

Yet in 1928 there were approximately 6,000 less automobiles and trucks operating on Indianapolis streets.

License records in the secretary of state's office reveal that 106,263 passenger cars and 22,652 trucks were licensed in Marion county during 1927, and of this number a total of 6,000 belonged to persons living in the county.

Yet in 1928 there were approximately 6,000 less automobiles and trucks operating on Indianapolis streets.

License records in the secretary of state's office reveal that 106,263 passenger cars and 22,652 trucks were licensed in Marion county during 1927, and of this number a total of 6,000 belonged to persons living in the county.

Yet in 1928 there were approximately 6,000 less automobiles and trucks operating on Indianapolis streets.

License records in the secretary of state's office reveal that 106,263 passenger cars and 22,652 trucks were licensed in Marion county during 1927, and of this number a total of 6,000 belonged to persons living in the county.

Yet in 1928 there were approximately 6,000 less automobiles and trucks operating on Indianapolis streets.

License records in the secretary of state's office reveal that 106,263 passenger cars and 22,652 trucks were licensed in Marion county during 1927, and of this number a total of 6,000 belonged to persons living in the county.

Yet in 1928 there were approximately 6,000 less automobiles and trucks operating on Indianapolis streets.

License records in the secretary of state's office reveal that 106,263 passenger cars and 22,652 trucks were licensed in Marion county during 1927, and of this number a total of 6,000 belonged to persons living in the county.

Yet in 1928 there were approximately 6,000 less automobiles and trucks operating on Indianapolis streets.

License records in the secretary of state's office reveal that 106,263 passenger cars and 22,652 trucks were licensed in Marion county during 1927, and of this number a total of 6,000 belonged to persons living in the county.

Yet in 1928 there were approximately 6,000 less automobiles and trucks operating on Indianapolis streets.

License records in the secretary of state's office reveal that 106,263 passenger cars and 22,652 trucks were licensed in Marion county during 1927, and of this number a total of 6,000 belonged to persons living in the county.

Yet in 1928 there were approximately 6,000 less automobiles and trucks operating on Indianapolis streets.

License records in the secretary of state's office reveal that 106,263 passenger cars and 22,652 trucks were licensed in Marion county during 1927, and of this number a total of 6,000 belonged to persons living in the county.

Yet in 1928 there were approximately 6,000 less automobiles and trucks operating on Indianapolis streets.

License records in the secretary of state's office reveal that 106,263 passenger cars and 22,652 trucks were licensed in Marion county during 1927, and of this number a total of 6,000 belonged to persons living in the county.

Yet in 1928 there were approximately 6,000 less automobiles and trucks operating on Indianapolis streets.

License records in the secretary of state's office reveal that 106,263 passenger cars and 22,652 trucks were licensed in Marion county during 1927, and of this number a total of 6,000 belonged to persons living in the county.

Yet in 1928 there were approximately 6,000 less automobiles and trucks operating on Indianapolis streets.

License records in the secretary of state's office reveal that 106,263 passenger cars and 22,652 trucks were licensed in Marion county during 1927, and of this number a total of 6,000 belonged to persons living in the county.

Yet in 1928 there were approximately 6,000 less automobiles and trucks operating on Indianapolis streets.

License records in the secretary of state's office reveal that 106,263 passenger cars and 22,652 trucks were licensed in Marion county during 1927, and of this number a total of 6,000 belonged to persons living in the county.

Yet in 1928 there were approximately 6,000 less automobiles and trucks operating on Indianapolis streets.

License records in the secretary of state's office reveal that 106,263 passenger cars and 22,652 trucks were licensed in Marion county during 1927, and of this number a total of 6,000 belonged to persons living in the county.

Yet in 1928 there were approximately 6,000 less automobiles and trucks operating on Indianapolis streets.

License records in the secretary of state's office reveal that 106,263 passenger cars and 22,652 trucks were licensed in Marion county during 1927, and of this number a total of 6,000 belonged to persons living in the county.

Yet in 1928 there were approximately 6,000 less automobiles and trucks operating on Indianapolis streets.

License records in the secretary of state's office reveal that 106,263 passenger cars and 22,652 trucks were licensed in Marion county during 1927, and of this number a total of 6,000 belonged to persons living in the county.

Yet in 1928 there were approximately 6,000 less automobiles and trucks operating on Indianapolis streets.

License records in the secretary of state's office reveal that 106,263 passenger cars and 22,652 trucks were licensed in Marion county during 1927, and of this number a total of 6,000 belonged to persons living in the county.

Yet in 1928 there were approximately 6,000 less automobiles and trucks operating on Indianapolis streets.

License records in the secretary of state's office reveal that 106,263 passenger cars and 22,652 trucks were licensed in Marion county during 1927, and of this number a total of 6,000 belonged to persons living in the county.

Yet in 1928 there were approximately 6,000 less automobiles and trucks operating on Indianapolis streets.

License records in the secretary of state's office reveal that 106,263 passenger cars and 22,652 trucks were licensed in Marion county during 1927, and of this number a total of 6,000 belonged to persons living in the county.

Yet in 1928 there were approximately 6,000 less automobiles and trucks operating on Indianapolis streets.

License records in the secretary of state's office reveal that 106,263 passenger cars and 22,652 trucks were licensed in Marion county during 1927, and of this number a total of 6,000 belonged to persons living in the county.

Yet in 1928 there were approximately 6,000 less automobiles and trucks operating on Indianapolis streets.

License records in the secretary of state's office reveal that 106,263 passenger cars and 22,652 trucks were licensed in Marion county during 1927, and of this number a total of 6,000 belonged to persons living in the county.

Yet in 1928 there were approximately 6,000 less automobiles and trucks operating on Indianapolis streets.

License records in the secretary of state's office reveal that 106,263 passenger cars and 22,652 trucks were licensed in Marion county during 1927, and of this number a total of 6,000 belonged to persons living in the county.

Yet in 1928 there were approximately 6,000 less automobiles and trucks operating on Indianapolis streets.

License records in the secretary of state's office reveal that 106,263 passenger cars and 22,652 trucks were licensed in Marion county during 1927, and of this number a total of 6,000 belonged to persons living in the county.

Yet in 1928 there were approximately 6,000 less automobiles and trucks operating on Indianapolis streets.

License records in the secretary of state's office reveal that 106,263 passenger cars and 22,652 trucks were licensed in Marion county during 1927, and of this number a total of 6,000 belonged to persons living in the county.

Yet in 1928 there were approximately 6,000 less automobiles and trucks operating on Indianapolis streets.

License records in the secretary of state's office reveal that 106,263 passenger cars and 22,652 trucks were licensed in Marion county during 1927, and of this number a total of 6,000 belonged to persons living in the county.

Yet in 1928 there were approximately 6,000 less automobiles and trucks operating on Indianapolis streets.

License records in the secretary of state's office reveal that 106,263 passenger cars and 22,652 trucks were licensed in Marion county during 1927, and of this number a total of 6,000 belonged to persons living in the county.

Yet in 1928 there were approximately 6,000 less automobiles and trucks operating on Indianapolis streets.

License records in the secretary of state's office reveal that 106,263 passenger cars and 22,652 trucks were licensed in Marion county during 1927, and of this number a total of 6,000 belonged to persons living in the county.

Yet in 1928 there were approximately 6,000 less automobiles and trucks operating on Indianapolis streets.

License records in the secretary of state's office reveal that 106,263 passenger cars and 22,652 trucks were licensed in Marion county during 1927, and of this number a total of 6,000 belonged to persons living in the county.

Yet in 1928 there were approximately 6,000 less automobiles and trucks operating on Indianapolis streets.

License records in the secretary of state's office reveal that 106,263 passenger cars and 22,652 trucks were licensed in Marion county during 1927, and of this number a total of 6,000 belonged to persons living in the county.

Yet in 1928 there were approximately 6,000 less automobiles and trucks operating on Indianapolis streets.

License records in the secretary of state's office reveal that 106,263 passenger cars and 22,652 trucks were licensed in Marion county during 1927, and of this number a total of 6,000 belonged to persons living in the county.

Yet in 1928 there were approximately 6,000 less automobiles and trucks operating on Indianapolis streets.

License records in the secretary of state's office reveal that 106,263 passenger cars and 22,652 trucks were licensed in Marion county during 1927, and of this number a total of 6,000 belonged to persons living in the county.

Yet in 1928 there were approximately 6,000 less automobiles and trucks operating on Indianapolis streets.

License records in the secretary of state's office reveal that 106,263 passenger cars and 22,652 trucks were licensed in Marion county during 1927, and of this number a total of 6,000 belonged to persons living in the county.

Yet in 1928 there were approximately 6,000 less automobiles and trucks operating on Indianapolis streets.

License records in the secretary of state's office reveal that 106,263 passenger cars and 22,652 trucks were licensed in Marion county during 1927, and of this number a total of 6,000 belonged to persons living in the county.

Yet in 1928 there were approximately 6,000 less automobiles and trucks operating on Indianapolis streets.

License records in the secretary of state's office reveal that 106,263 passenger cars and 22,652 trucks were licensed in Marion county during 1927, and of this number a total of 6,000 belonged to persons living in the county.

Yet in 1928 there were approximately 6,000 less automobiles and trucks operating on Indianapolis streets.

License records in the secretary of state's office reveal that 106,263 passenger cars and 22,652 trucks were licensed in Marion county during 1927, and of this number a total of 6,000 belonged to persons living in the county.

Yet in 1928 there were approximately 6,000 less automobiles and trucks operating on Indianapolis streets.

License records in the secretary of state's office reveal that 106,263 passenger cars and 22,652 trucks were licensed in Marion county during 1927, and of this number a total of 6,000 belonged to persons living in the county.

Yet in 1928 there were approximately 6,000 less automobiles and trucks operating on Indianapolis streets.

License records in the secretary of state's office reveal that 106,263 passenger cars and 22,652 trucks were licensed in Marion county during 1927, and of this number a total of 6,000 belonged to persons living in the county.

Yet in 1928 there were approximately 6,000 less automobiles and trucks operating on Indianapolis streets.

License records in the secretary of state's office reveal that 106,263 passenger cars and 22,652 trucks were licensed in Marion county during 1927, and of this number a total of 6,000 belonged to persons living in the county.

Yet in 1928 there were approximately 6,000 less automobiles and trucks operating on Indianapolis streets.

License records in the secretary of state's office reveal that 106,263 passenger cars and 22,652 trucks were licensed in Marion county during 1927, and of this number a total of 6,000 belonged to persons living in the county.

Yet in 1928 there were approximately 6,000 less automobiles and trucks operating on Indianapolis streets.

License records in the secretary of state's office reveal that 106,263 passenger cars and 22,652 trucks were licensed in Marion county during 1927, and of this number a total of 6,000 belonged to persons living in the county.

Yet in 1928 there were approximately 6,000 less automobiles and trucks operating on Indianapolis streets.

License records in the secretary of state's office reveal that 106,263 passenger cars and 22,652 trucks were licensed in Marion county during 1927, and of this number a total of 6,000 belonged to persons living in the county.

Yet in 1928 there were approximately 6,000 less automobiles and trucks operating on Indianapolis streets.

License records in the secretary of state's office reveal that 106,263 passenger cars and 22,652 trucks were licensed in Marion county during 1927, and of this number a total of 6,000 belonged to persons living in the county.

Yet in 1928 there were approximately 6,000 less automobiles and trucks operating on Indianapolis streets.

License records in the secretary of state's office reveal that 106,263 passenger cars and 22,652 trucks were licensed in Marion county during 1927, and of this number a total of 6,000 belonged to persons living in the county.

Yet in 1928 there were approximately 6,000 less automobiles and trucks operating on Indianapolis streets.

License records in the secretary of state's office reveal that 106,263 passenger cars and 22,652 trucks were licensed in Marion county during 1927, and of this number a total of 6,000 belonged to persons living in the county.

Yet in 1928 there were approximately 6,000 less automobiles and trucks operating on Indianapolis streets.

License records in the secretary of state's office reveal that 106,263 passenger cars and 22,652 trucks were licensed in Marion county during 1927, and of this number a total of 6,000 belonged to persons living in the county.

Yet in 1928 there were approximately 6,000 less automobiles and trucks operating on Indianapolis streets.

License records in the secretary of state's office reveal that 106,263 passenger cars and 22,652 trucks were licensed in Marion county during 1927, and of this number a total of 6,000 belonged to persons living in the county.

Yet in 1928 there were approximately 6,000 less automobiles and trucks operating on Indianapolis streets.

License records in the secretary of state's office reveal that 106,263 passenger cars and 22,652 trucks were licensed in Marion county during 1927, and of this number a total of 6,000 belonged to persons living in the county.

Yet in 1928 there were approximately 6,000 less automobiles and trucks operating on Indianapolis streets.

License records in the secretary of state's office reveal that 106,263 passenger cars and 22,652 trucks were licensed in Marion county during 1927, and of this number a total of 6,000 belonged to persons living in the county.

Yet in 1928 there were approximately 6,000 less automobiles and trucks operating on Indianapolis streets.

License records in the secretary of state's office reveal that 106,263 passenger cars and 22,652 trucks were licensed in Marion county during 1927, and of this number a total of 6,000 belonged to persons living in the county.

Yet in 1928 there were approximately 6,000 less automobiles and trucks operating on Indianapolis streets.

License records in the secretary of state's office reveal that 106,263 passenger cars and 22,652 trucks were licensed in Marion county during 1927, and of this number a total of 6,000 belonged to persons living in the county.

Yet in 1928 there were approximately 6,000 less automobiles and trucks operating on Indianapolis streets.

License records in the secretary of state's office reveal that 106,263 passenger cars and 22,652 trucks were licensed in Marion county during 1927, and of this number a total of 6,000 belonged to persons living in the county.

Yet in 1928 there were approximately 6,000 less automobiles and trucks operating on Indianapolis streets.

License records in the secretary of state's office reveal that 106,263 passenger cars and 22,652 trucks were licensed in Marion county during 1927, and of this number a total of 6,000 belonged to persons living in the county.

Yet in 1928 there were approximately 6,000 less automobiles and trucks operating on Indianapolis streets.

License records in the secretary of state's office reveal that 106,263 passenger cars and 22,652 trucks were licensed in Marion county during 1927, and of this number a total of 6,000 belonged to persons living in the county.

Yet in 1928 there were approximately 6,000 less automobiles and trucks operating on Indianapolis streets.

License records in the secretary of state's office reveal that 106,263 passenger cars and 22,652 trucks were licensed in Marion county during 1927, and of this number a total of 6,000 belonged to persons living in the county.

Yet in 1928 there were approximately 6,000 less automobiles and trucks operating on Indianapolis streets.

License records in the secretary of state's office reveal that 106,263 passenger cars and 22,652 trucks were licensed in Marion county during 1927, and of this number a total of 6,000 belonged to persons living in the county.

Yet in 1928 there were approximately 6,000 less automobiles and trucks operating on Indianapolis streets.

License records in the secretary of state's office reveal that 106,263 passenger cars and 22,652 trucks were licensed in Marion county during 1927, and of this number a total of 6,000 belonged to persons living in the county.

Yet in 1928 there were approximately 6,000 less automobiles and trucks operating on Indianapolis streets.

License records in the secretary of state's office reveal that 106,263 passenger cars and 22,652 trucks were licensed in Marion county during 1927, and of this number a total of 6,000 belonged to persons living in the county.

Yet in 1928 there were approximately 6,000 less automobiles and trucks operating on Indianapolis streets.

License records in the secretary of state's office reveal that 106,263 passenger cars and 22,652 trucks were licensed in Marion county during 1927, and of this number a total of 6,000 belonged to persons living in the county.

Yet in 1928 there were approximately 6,000 less automobiles and trucks operating on Indianapolis streets.

License records in the secretary of state's office reveal that 106,263 passenger cars and 22,652 trucks were licensed in Marion county during 1927, and of this number a total of 6,000 belonged to persons living in the county.

Yet in 1928 there were approximately 6,000 less automobiles and trucks operating on Indianapolis streets.

License records in the secretary of state's office reveal that 106,263 passenger cars and 22,652 trucks were licensed in Marion county during 1927, and of this number a total of 6,000 belonged to persons living in the county.

Yet in 1928 there were approximately 6,000 less automobiles and trucks operating on Indianapolis streets.

License records in the secretary of state's office reveal that 106,263 passenger cars and 22,652 trucks were licensed in Marion county during 1927, and of this number a total of 6,000 belonged to persons living in the county.