

WON STREAM FOR COOLIDGE BEST IN NATION

Brule River Paradise for Anglers Teems With Finny Beauties.

SUPERIOR, Wis., June 7.—When President Coolidge decided to spend his summer's vacation on the Cedar Island estate of the late Henry Clay Pierce, he selected the very headquarters of the army of North American trout.

If it's fishing the President wants—and, judging from his enjoyment of the sport on previous vacations, it is—he could not have picked a better spot.

The cold waters of Brule River hold the great-granddaddies of all the gamey trout that ever gladdened a fisherman's heart.

Native Guides Eager
One of the men who eagerly is awaiting the President's arrival is George Babb, the champion fisherman of the country. He knows every foot of the Brule River bottom and is planning to offer his services to the President as a guide.

Another is Antoine Dennis, 76-year-old boatman, who probably will be chosen to take the President up and down the stream in his row-boat.

Fishermen here are eager to see that President Coolidge can do with the Brule trout. Without guides, they say, it would be a sure bet that he would go empty-handed.

The basic situation of the Brule is composed of the ordinary brook or speckled trout. In addition, however, there is a wealth of brown trout, a good number of steelheads and a fair number of rainbows.

Ten Pounders Common

The rainbows grow the largest, ten-pound specimens being not uncommon; but local fishermen say most of this species have probably left the river for Lake Superior by this time.

It is partly because the late Mr. Pierce was a fishing enthusiast that trout are so abundant in the waters of his estate.

When he built his summer home here he found brook and brown trout in abundance, but no steelheads or rainbows.

These fish are natives of the Rocky Mountains and Pacific Coast streams. So Mr. Pierce proceeded to stock the stream with them, and the supply has been increasing ever since.

AIDING YOUTHS TO BE 'AIR-MINDED'

A Very Wonderful Book Is Now Ready for All Boys Who Are Interested in Building and Flying Model Aircraft at Home.

By WALTER D. HICKMAN
EVERY day I seem to realize more than ever the advantages that boys of today have.

I have before me a grand and glorious book for boys who are interested in building and flying model aircraft.

This official book of the Playground and Recreation Association of America is called "Building and Flying Model Aircraft" and it is published by The Ronald Press Company of New York.

It is by Paul Edward Garber and C. DeF. Chandler is editor. Orville Wright is chairman of the National Playground Miniature Aircraft Tournament Committee and Col. Charles A. Lindbergh is associate chairman.

Col. Lindbergh in the space allotted to him in the foreword of this book writes: "The Playground and Recreation Association is greatly assisting in the advancement of aeronautics by enlisting thousands of boys in American cities in the National Playground Miniature Aircraft contest. As flying activities increase a basic education in elementary aviation is becoming a necessity for everyone."

This book tells you how to make the following: The Jack Lefter 1927 prize winning model; model aircraft propellers, the sizzlefut, the monowing, the humming bird, the Lange-3 model, chassis models, scale models, model balloon, gliders and the like.

The author in the chapter dealing with the uses of model aircraft writes: "In addition to the value as a recreation model aeronautics plays a prominent part in the industrial and commercial development of the world. One who adopts model building and flying is fitting himself in a very enjoyable way for a part in life."

This book also goes into detail explaining how numerous model aircraft contests may be conducted. It seems to me that such contests here would be wonderful for boys and girls in the city parks.

I recommend "Building and Flying Model Aircraft." It is the most complete book of its kind that I have ever seen.

LOOKING OVER
NEW SHOW AT OHIO

"Able's Irish Rose" seems to be the starting point of all these Irish-Jewish plays. At that the well-known play did nothing but set forth what was an old, old, idea. "Clancy's Kosher Wedding" is

Pulpit Cops

By Times Special
EDINBURGH, Ind., June 7.—This town's two-man police force is now wholly ministerial. Marshal W. C. Milburn, Hollenbeck minister, has as a new assistant, John Caldwell, Baptist minister.

Gilda and New Friend



Miss Gilda Gray

Here is a brand new and unusual picture of Gilda Gray, the dancer, now at Loew's Palace. It shows Gilda and her new friend, a pretty little puppy.

MAP ROUTE TO G. O. P. CONCLAVE VIA ST. LOUIS

Motor Club Says Best Highway Is Federal Rd. 40.

The best motor route to Kansas City where the Republican national convention will meet next week to pick a candidate for President is through St. Louis, following U. S. Rd. 40, according to a bulletin of the Hoosier Motor Club today.

The 497 miles of the route is paved with the exception of a few stretches of cinder and gravel in Illinois. The route:

Go west on Washington St. and follow U. S. Rd. 40 through Plainfield, Sullivan, Harmony, Brazil, Terre Haute, to the Indiana-Illinois State line. Take Illinois State Rd. 11 through Marshall, Greenup, Edinham, Vandalia, Greenville, Highland, Collinsville, to East St. Louis. Cross free bridge to St. Louis. Leave St. Louis via Lindell Blvd. and follow U. S. Rd. 40



George Sidney

Heymen Cohen and Timothy Clancy both had clothing stores on Delancey St., next door to each other. And they lived across the hall from each other over their stores. Heymen and Timothy spent their spare time fighting with each other and their wives were continually pulling them apart, but the wives were friendly.

Leah was the daughter of the Cohen's and the Clancy's had a son Tom, who was on the fire department. And the son and daughter were much in love with each other. The shadow in their sunlight was one Izzy Duffy who was a prize fighter.

Izzy and Tom got into a fight at the Irish-Jewish picnic and finished it at the boxing club. Heymen bets his store against that of Clancy's and loses. He has to move and Clancy misses him and brings him back.

It is light, it is entertaining, and there are some good laughs in it when Mose Cohen sings an Irish song at the picnic and starts the fight.

The part of Cohen is taken by George Sidney. He is mighty good. Will Armstrong is Clancy. He has a good character part here and makes a lot of it. Rex Lease is the son Tom. He is fair. Leah is played by Ann Brody. A good part and well done.

A serial picture, "The King of the Jungle," is also on the program, as well as shorter subjects.

At the Ohio today and tomorrow. (By the Observer.)

Indianapolis theaters today offer: Gilda Gray at the Palace; Kelly and Jackson at the Lyric; "Why Sailors Go Wrong at the Apollo; Pat Lane at the Fountain Square; "Lady Be Good" at the Circle; "His Tiger Lady" at the Indiana; "Tommy" at English's, and "The Wooden Kitten" at Keith's.



Sore, Tired Feet

Oh! How good it feels to put your tired, aching feet in a "Tiz" bath! You can just feel the pain drawn out and grateful comfort being restored.

"Tiz" draws out the acids and poisons that puff up your feet and make them tender and sore. It takes all the soreness out of corns, calluses and strained muscles and makes tight shoes feel a half size larger. Get a box of "Tiz" at any drug or department store and have weeks of foot comfort for a few cents.

Bathe Them in "TIZ"

WHY WOMEN CHOOSE

A McMickle Permanent Wave!
\$5 ENTIRE HEAD
Limited Time Only!

No finger waving or water waving combs needed. We show you how to take care of your wave. Only the ordinary attention usually given to curly hair is necessary.

We do permanent waving only. We dress the hair to suit the individual type. Free test curl. No students. No waiting. Only skilled operators.

McMickle Permanent Wave System

206 Kresge Bldg. OPEN 9 A. M. TO 7 P. M. 41 E. Washington RILEY 6917

RUN-DOWN WOMEN REGAIN STRENGTH

Find Lydia E. Pinkham's Vegetable Compound A Dependable Medicine



MRS. HELEN SEDIVI

5939 National St., Tacony, Phila., Pa. Philadelphia, Pa.—"I really can't express in writing how much Lydia E. Pinkham's Vegetable Compound has done for me. After my second baby was born I was always tired. I read so much of what the Vegetable Compound has done for others

that I gave it a trial. It has certainly done wonders for me. I have praised it to single and to married women and intend to continue it. It seems that taking your medicine has made me a different girl. I also secured Lydia E. Pinkham's Pills for Constipation and they have helped me wonderfully."—Mrs. HELEN SEDIVI, 4939 National Street, Tacony, Philadelphia, Pa.

A Weak, Nervous Woman Helped
Terre Haute, Ind.—"I have a baby six months old and after he was born I felt so badly I could hardly do my work. I was weak, nervous and run-down. I have taken three bottles of Lydia E. Pinkham's Vegetable Compound and would not be without it. I feel lots better and am able to do my housework. I also take Lydia E. Pinkham's Pills for Constipation. I would like you to print this letter in some of the papers for I have often heard remarks about your testimonials. They say, 'You never see letters from anyone in this city. It is always somewhere else.'"—Mrs. J. K. MOORE, 1801 Blaine Avenue, Terre Haute, Indiana.

SIMPLIFY RULES FOR EMIGRANTS

Single Card Needed for Trip to Mexico.

By United Press
MEXICO CITY, June 7.—Tourists entering Mexico may do so with a minimum of discomfort with respect to immigration and passport requirements.

The new regulations for tourists simplify the rules to such an extent that in the future it will be possible for an entire family to cross the border with only one identification card for all.

The only proof of identity now required is the identification card provided by the Mexican consular officers in the United States. This

is a card containing a full-face and profile photograph of the bearer.

One is asked also to state whether the visit is exclusively one of recreation. A tourist is permitted to remain in Mexico six months. If for any reason it is discovered that the object of the visit is for material or reasons other than recreation,

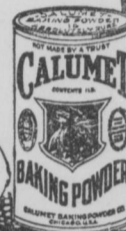
the applicant is subject to the general requisites of an immigrant including the payment of the \$11 tax.

The Phantom City
"The Phantom City," a mystery story of the old mining camps, is to be Ken Maynard's next western feature.

RIGHT LIVING IS 90% RIGHT EATING

Eat right, if you wish to live long, prosper and enjoy life to the very limit. You don't have to go on a restricted diet or eat things you do not care for. There are scores and scores of delicious, healthful, nourishing foods that can be made with Calumet Baking Powder. Foods that you will relish. That are rich with body and vigor building elements of the highest value. Eat your way to health. Let Calumet help you.

DOUBLE ACTING
MAKES BAKING EASIER



LESS THAN 1¢ PER BAKING

CALUMET
THE WORLD'S GREATEST
BAKING POWDER

SALES 2½ TIMES THOSE OF ANY OTHER BRAND

20-22
West
Washington
Street

SELIG'S SUBWAY

EXTREME VALUE

FOR YOUR MONEY

Stairway
Inside
Street
Doorway
to the Left

Overnight From New York! 500 Beautiful NEW

DRESSES



In a Great SALE 2 for \$14
(One Dress...\$7.50)
—Polka Dots —Printed and Plain Crepes
—Printed Georgettes
—Washable Crepes
—Organdies —Navy Georgettes

OUR buyer made a TREMENDOUS special purchase, enabling Selig Subway patrons to secure two new summer dresses at the price of one! Score upon score of FINER dresses whose quality material and style-rightness merit a much HIGHER PRICE!

SIZES FOR WOMEN AND MISSES!

WONDER VALUES! 400 SUMMER HATS

For Dress, Sports and Daytime Wear
LARGE and SMALL HATS



Every Wanted Material in Wanted Color for Summer!

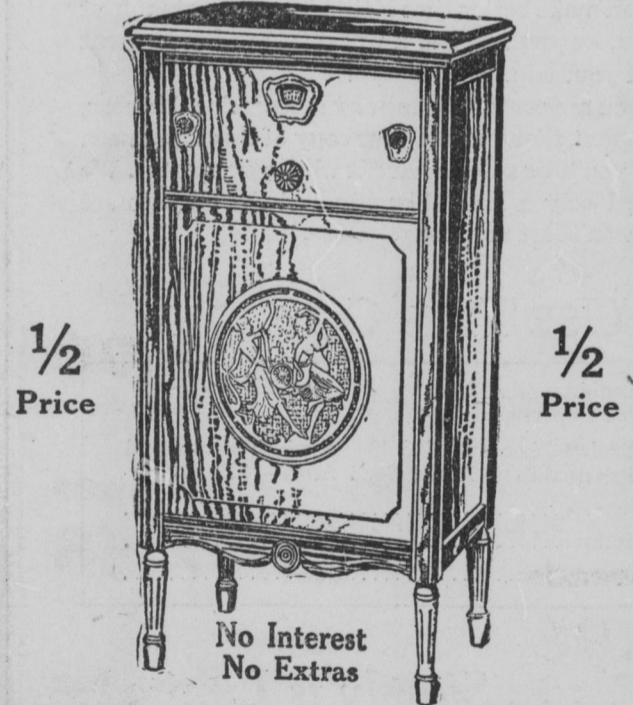
Choice \$1

To Miss This Sale Is to Miss the Greatest Values We Have Ever Offered!

1/2 PRICE RADIO SALE

Greatest Opportunity of the Year

Closing out the season's left-over stock of Stewart-Warner Matched Unit Radios. Every one a late model from the past season. All first class and guaranteed. A C electric and battery or electrical equipped radios. At exactly 1/2 regular factory price.



A C Electric, as pictured. Regular price \$196.50. Friday and Saturday sale.....

Tubes Included With Above Set

5-Tube Console, Regular \$79.50, Sale.....\$39.75
6-Tube Table Model, Regular \$80.00, Sale....\$40.00
5-Tube Table Model, Regular \$50.00, Sale....\$25.00

Accessories Extra

Come Early

NATIONAL FURNITURE COMPANY
335-343 W. WASHINGTON ST.