

STYLE'S EASTER INSTINCT TURNS TOWARD HATS

Milady Can Get Them Out of Head Only by Putting Them On—And This Is What She'll Wear

BY JULIA BLANSHARD
NEA Service Writer

In the spring, lovely hats just naturally go to a woman's head. When Easter nears, it is positively instinctive with women to want a stunning new bonnet! And now they are this year, if they ever were.

In the first place, the ubiquitous felt is at last vanquished. Straws hold first place.

There are innumerable straws used: Sisal, baku, bengal, bangkok, miko-yana (a dull linen straw), ballbuntl, tucan, para, parassol, picot, pallasson and the large-weave, rough hemp, tweed, crocheted straw and cellophane, which is a very shiny kind of straw.

Color Stands Out

Second, after the supremacy of straw for headgear, the fact of color stands out; pastel being preferred by many. Ensembles are still good. But the hat does not match one's costume this year. Natural straw is excellent. Off-white, purple, greens, soft red and independent blues are all good.

Third, small hats go up in the front and down in the back—like the uneven hemline. Many hats have brims that turn and twist and even pleat their way to chic.

Fourth, come trimmings. Feathers, ribbons, buckles, flowers, bows and lace add their quota, especially shellacked feather fancies.

Stuffed Pimientos

Canned pimientos are delicious stuffed with leftover meats and cracker crumbs. Cover with strips of bacon and bake until the bacon is crisp.

Sports Suit

A new sports suit has its gored skirt of tan woolen, crossed-barred in brown and its short jacket of brown.

Stiff Moires

Stiff moires, in dark shades, fashion of the smart spring frocks. Stiff bows or flounces emphasize the material's character.

affection for Easter hats are shown today. First comes the little navy blue transparent felt Bedouin turban, with snappy braided straw

swathing it in three shades of tan. Tailored chic is double chic when scarlet felt binds, bands and crowns a cream linen straw. Here we have

the flared up front, though the brim is sizeable, and wired. A modern silver link catches the side trimming.

Imaginative, alluring and not unlike the new coiffures is the toque of lavender-beige crocheted straw that uses feather curls all shellacked

and gleaming for its all-over decoration. The softly undulating brim of the rose-blush bengal afternoon hat

works in individual fashion to to achieve its grace.

Dipping over one eye, it rises abruptly over the other and then droops again in the rear. Interest centers in the crown where three lovely tulips are worked out in grosgrain ribbon in pinks and green.

Black Turban Shown

A shining success is the black turban of lustrous sisal which emphasizes the fact that crowns suddenly have grown much lower.

Here we have straw manipulated like the French felts, with the same feeling for feminine grace. A huge white velvet flower lends more distinction.

Newest of the new is the rough Italian straw, in banana color that takes almost a blocked crown and a flaring mushroom brim of small dimensions.

Its color, straw, shape and trimmings are unusual. Feather fancies in a rich pansy shade are the cute decorations.

Dressier they are, more beautiful and more subtly becoming—these new Easter hats. Is it any wonder women can get them out of their heads only by putting them on?

BLACK FEATURE OF NEW HANDKERCHIEFS

Black and white, although a difficult color scheme to handle because of its association with mourning wear, is now featured in new handkerchiefs which are very smart, especially when carried with the new navy blue and black costumes. White centers are used with scroll border designs in fine lines, dots and modernistic effects. Hems are either black or white, depending upon the amount of color required to complete the design.

BLACK AND WHITE ARE STILL POPULAR

Black and white in combination has held its place in the sun for so long now that one no longer thinks of it as "striking," which was the adjective always reserved for this color scheme. The new heavy black satin is supplying a lot of the black this season, while white fox or ermine collars and white satin blouses provide the "striking" contrast. Polka dots or figured prints of white on black, used as linings and frocks, serve when less vibrant effects are striven for.

Clean Umbrellas

Umbrellas should be opened once in a while and scrubbed with warm suds, to which some ammonia has been added. Rinse in clear water and let dry while open.

Straw, Subtle, Becoming and New—That's the 1928 Easter Bonnet



Instinctive with Milady at Easter (left to right): Braided straw in three tones of tan swathed a Bedouin turban of blue felt; (below) a tall straw hat with a cream linen straw turban and a shellacked black feather; rose beige bengal trimmed with ribbon tulip; lustrous sisal turban with white velvet flower and (below) purple feather trimming on a banana Italian straw.

GIRL ABOUT TOWN

BY MARILYN

I was in the Chamber of Commerce Bldg. the other day running up and down elevators, looking everywhere for Mr. Nicholson. I didn't find Mr. Nicholson, but I did find Genevieve Pickrell, moving tall and serene along the sixth floor.

"Well, what are you doing for your town and country?" I inquired.

"Not so much for town and country," she returned, "but a lot for Ralph Vonnegut, Perry Meek and Herbert Todd."

"Well, I see your point of view," I observed. "It's a darn good one."

"Come into my office," she said, which I did and we both powdered our noses before going into the matter any further.

"You see," she explained, "Wednesday evening the 28th of March the Mask and Wig University of Pennsylvania is giving an awfully cute show 'Tarantella' at the Murat. And I am in charge of this office."

"Ah ha," I inhaled. "And who is on the committee. It makes a big difference."

Committee Members

"Listen," she breathed, "besides the officers, Rannels Harrell, Neal Estabrook, Harry Shepard, there is Bob Stafford, Bowman Elder, Charles Weiss, Ralph Vonnegut, Willis Adams, Norman Metzger, Bob Winslow, Irving Faurve and Russell Langenkamp!"

"My dear," I said. "I couldn't have done better myself. All the local talent and most of it unattached."

"Besides," she purred calmly, "James L. Daggett, the son of Mr. and Mrs. Robert Frost Daggett, is in the cast. He's in the agricultural school of the university."

"No," I said, just to be sociable, but getting more and more interested.

"Yes," she went on, "and it will be in two acts with lots of gay costumes and dancing and mad Sicilian scenery. The cast also includes Robert T. Brown, the editor of the Punch Bowl. And besides being terribly attractive, most of the cast are prominent athletes."

"Most of the cast is," I pointed out feebly.

"Are good soccer players," she went on, ignoring me entirely.

"Have you any pictures? I interrupted.

"She showed them to me."

"It's all settled," I said. "I shall certainly have to see 'Tarantella,' what with these pictures and the ball afterward and one thing and another."

"Of course you will," she said calmly. "Why do you think I've been

talking steadily for twenty-six minutes? I'm doing the publicity."

I admitted I was sold even before she went on to tell me the plot which has lots of clever possibilities.

Well, it seems there was a motion picture company which went down to Sicily on location. And while there adventured to the right of them, adventured to the left of them. It all sounded awfully intriguing.

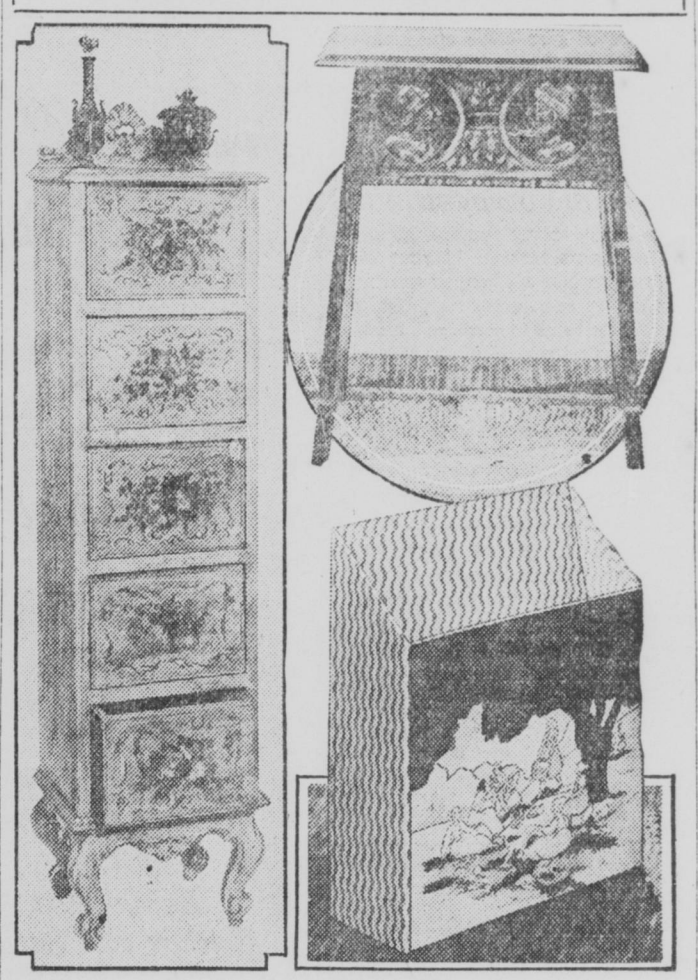
Mrs. Robert Winslow and Mrs. Norman Metzger are helping to

make the reception of the Indianapolis Athletic Club after the performance an especially successful one, and what with Shirley Murphy, Conrad Ruckelshaus, Henry Thornton, Henry Frenzel, Bob Wild and Thomas Hibben standing around being decorative, it ought to be a large evening. Besides, I'm going.

Popular Shades

Judging from the color note at recent evening parties, pink in all tones and reds from soft ones to deep are the popular colors.

Peasants Send Color



European peasants send us gay furniture that colors up the house like spring flowers: left, decorative Italian chest of drawers with wild flowers in bright colors on a yellow painted background; (upper right) hand-carved Cromwell stool tea table or high end table and (lower) picnic newspaper and magazine rack, in gaudy red and white stripes with a bright scene depicted on its front.

BEAUTY HOW and WHY

BY ANN ALYSIS

Sit in front of your mirror. Study your type. Should your beauty be of the exquisitely feminine kind, tapering face and delicate, pointed chin? You are fortunate, indeed, particularly so if your features are of a corresponding delicacy.

Almost any arrangement of hair or of neckline will look well on women of this type, but too ornate a style will detract from the exquisite beauty of line. Attention is directed to the hair and necklines. They are more important than any others, because they frame the picture, as it were. Simplicity should be the keynote in dress and ornament. Rouge, powder and lipstick should be used with the utmost delicacy of touch, and almost imperceptibly.

Should your facial type be square or oval or a combination of any of the typical forms, accent your best points and soften the harsher ones. The softening or shading process consists in proper arrangement of the hair to offset an unpleasing line.

Lastly, apply rouge in such a manner as to narrow too broad or widen too narrow a face. The lipstick, used artistically, and powder daintily applied, will do almost as much for you as nature might have done in her happiest mood.

SPRING

Many Styles to Choose From

AAA TO EE

And the mode in

CORRECTIVE FOOTWEAR

The Brightness—the Gayness—of this season's Shoe Styles are reflected in the new corrective features of Heid's Health Shoes.

223 and 5537 East Washington 1546 North Illinois

HEID'S

CREDIT

Why Certainly?

AT DEE'S!

DOWN \$1 A WEEK

Extra Special!

Dee's Regular \$32.50

DIAMOND RINGS

\$24.95

A dazzling fiery diamond beautifully set in a new design 18-kt. solid white gold hand-carved mounting—

Only \$1.00 a Week!

See Our Windows! You Can't Equal the Price!

DEE JEWELRY COMPANY

CLAYPOOL HOTEL BLDG. - 18 N. ILLINOIS ST.

Only a Few Doors North of Washington Street

NEW SPRING FASHIONS

At Globe Store's Famous Low Prices!

Why Pay More Than Globe Store Prices? Make comparisons before purchasing elsewhere!

A Wonderful Group of Spring Dresses

Easily Worth 25% to 33 1-3% More

Scores of them, made from the most desirable fabrics for spring.

\$5.00 and \$8.95

Beautiful New Spring Coats

The Smartest Silhouettes—the Most Popular Fur Trimmings

Belted models, tailored models, notch collar models, throw collar models.

All Sizes \$8.95 to \$13.99

Ladies' Full Fashioned \$1.19 CHIFFON HOSIERY

All fashionable colors, all sizes; sale price—

69c

Ladies' \$2.95, \$3.50, \$4.95 and \$6.95 Novelty SLIPPERS and OXFORDS

Satin, patent, two-tones, new ties, pumps and strap effects. Reptile and rich new shades. Sale price, while they last—

\$1.95 and \$3.85 ALL SIZES, ALL STYLES

Buy Now! Save in a Big Way!

THE GLOBE

330-34 WEST WASHINGTON ST.

330-34 WEST WASHINGTON ST.

The Washed Woman!

At every resort, at every social gathering, there is one woman whose serenity and poise are admired—whose smart attire is envied among her friends. Her popularity is the reward of carefully planning her wardrobe.

And yet—her dress may be an old one that has undergone the magic touch of our dry-cleaning process. There are few stains and imperfections that we cannot remove! Many an old—practically discarded dress has been made to do new service after it was sent to us!

The cost is but a trifle—the satisfaction is without limit.

French Steam Dye Works

"The Garment Cleaners"

ESTABLISHED 1899

Central Office — 59 Monument Circle — RI ley 5858
North Side Office—2706 N. Meridian—TA lbot 4746
MAIN OFFICE—MA in 2448-2447
317 W. Maryland St.