

SPRING GOWNS DEPART FROM STRAIGHT LINE

Spirit of Season Rejected
in Break From Old
Silhouettes.

BY HENRI BENDEL
For NEA Service
NEW YORK, March 21.—The
lines of new spring evening gowns
are as fresh and fluttering as the
season's zephyrs.

The solidity and regularity of the
straight line silhouette seems a
very dead thing right now. All
the new fashions break the straight
lines to bits. If I were asked to
name the most interesting point of
new evening styles, I think I should
say the killing of the straight line
continuity.

Winter deserves honorable men-
tion in this matter. For the puffs
and bows and bustles tactfully pre-
pared the way for the present ten-
dency to diagonal lines, slanting
tied effects and hemlines that
just can not seem to accept the
even tenor as their mode of life.

Spring materials are particularly
dainty for evening wear. Flow-
ered freshness comes to us in print-
ed satin and chiffons. The swish
and sheen of moire adds a so-
phisticated quality to any party.
And taffetas come in luscious
shades—all of them soft like the
off-whites, the honey beiges, the
moonlight greens and so on.

Three Divergent Interpretations
I show today three divergent in-
terpretations of just how fashion
has the upper hand in this matter
of breaking up the straight lines,
once and for all.

First is a frock as daintily fresh
and graceful an embodiment of the
season as spring flowers themselves.
On an ivory background, roses in
soft pink tints gleam among delicate
traceries of green leaves.

A new note in slanting effects is
achieved here by having the down-
ward line of the irregular neckline,
the belt, the skirt yoke and the
skirt's flounce converge on the left
hip. Novel, different and charming
is the effect.

The flounce is circular and of gen-
erous fullness, with dipping, point-
ing ends on the opposite sides. The
bindings are of the deepest shade of
rose.

Crisp as the spirit of spring is the
more of periwinkle blue. This gown
has two noteworthy effects in its
lines—the off-the-shoulder sugges-
tion of its curved neckline and the
fluttering tendency of its pointed
panels.

Those Be-Gemmed Gowns
Two very lovely costume jewelry
pins ornament this blue frock—
square turquoise set in platinum. In
modern design. One of the twin
pins catches the bodice at the point
of the V and eases a little fullness
into the neckline. The other fastens
the riddle. The be-gemmed gown
really has the edge on the other
now.

I must mention, too, the sug-
gestion of a blouse this bodice has.
This might be taken to forecast a
day—not too far distance—when the
fullness of frocks may come above
the waistline, with slender hip
effects—quite a different effect from
today's modes.

The third establishes all over
again the chic of black for evening
—especially when it is svelte, deli-
cate, transparent velvet.

Black Velvet's Elegance

I have remarked before but would
like to emphasize the insistence of
evening modes on a more elegant
formality. Black velvet has this
intrinsically. And when the lines have
flowing grace it is doubled.

Here I have applied the shirred
flounce to get the swallow-tail hem-
line. And for diversity, this hem is
curved and notched to show the
apple green satin lining. The neck-
line and sleeveless armholes are
likewise bound with green which
shows over and anon as Milady
moves, giving a fresh note to the
gown.

Milady's Boudoir of Graceful Day-Bed, Low Easy Chair, Typify Her Modernism



For the modern boudoir: (above) Compact dressing table in ebony and ivory with four compartments and underslung chairs upholstered in new Rodier fabrics in ivory, black and orchid tones; (below) A low day-bed is a single sweep of grace in Macassar-ebony, with quilted rose taffeta coverlet and four pillows; the mirror is silver edged, crystal flower lights are wall motifs, a low chair matches the bed and soft, serene rugs are in patterned gray lambskin.

MODERN woman's environment
has caught up with her per-
sonality! Milady of 1928 may now
have her entire home done in a
modernistic style in keeping with
her own spirit.

Take, specifically, the boudoir. In
the charming modern manner, that
very personal room can be decorat-
ed in entirety in the same gray-
hound sleekness of Milady herself.
Low, comfortable chairs are a
single sweep in one-piece of lus-
trous wood and dressing tables are
compact with just enough knee-
space underneath for her silken
form.

Soft Colors and Fabrics
Day-bed curve to grace in love-
ly inlaid woods, their bases con-
tributing beauty and their cover-
lets simple elegance itself. Rugs,
walls, coverlets, chair upholster-
ings are luxuriously, serenely ex-
quisite in soft color and fabric.

Furniture and furnishings, as a
matter of fact, have lagged in this
matter of conforming to the new
idea of woman. Miss Modern has
become legend in the way her
changing character has revolution-
ized clothes so they will give her
more freedom, made hats small
enough to fit her shorn locks, fash-
ioned jewelry in new and intrigu-
ing variety to suit her fancy.

Now along comes modern fur-
niture to give her a setting in keep-
ing with the graceful slitheriness
of her silken self and with the easy
directness and simplicity of her
manner.

Non-Essentials Passe
Modern boudoirs are as shorn of
non-essentials as is the woman of

**NEW SWEATERS FOR
CHILD ATTRACTIVE**

Children's sweaters are to be seen
in new models that have attractive
designs for the borders and in the
collars and cuffs. In those for
smaller children these designs are
taken from nursery rhymes and
have different characters portrayed
in various color schemes. In the
two-year-old sizes, the sweaters
have just a single figure worked out
by hand in soft angora on the front.
Special attention has been paid to
the neck treatments, some being
finished in student fashion, some
with "V's," others with square necks
with a turn-back collar, and others
with the regulation turtle neck.
Some are made to fasten at the
side with a row of pearl buttons,
and others slip on over the head.

ODD EXTRAS IN FURNITURE CAN BRIGHTEN HOME

Cheery Unusual Bits May
Have Some Effect
as New Hat

NEW YORK, March 21.—The
call to spring decoration soon
will sound, and novel new pieces of
furniture offer themselves as an
answer to it.

Acquiring a new lamp, table,
chair, rug, picture of any colorful,
decorative home accessory is quite
like putting on a new hat when one
is tired of an old costume.

The new home accessory, like the
hat, has a remarkable psychological
effect upon the home-maker, as well
as upon other members of the
family. It may spur another onto
making chintz slip-covers for some
of the chairs that are not all they
once were, or encourage sister to
make a few gay pillows to liven up
a corner that is cozily dark in win-
ter but needs a vivid note for spring.

Try some unusual object—not just
a chair, davenport or other large
piece that must fit in with every-
thing else before it is convincingly
all right in the room.

On the market today are some
vastly interesting, amusing and
highly decorative odd accessories
for the living room that carry no re-
sponsibility with them, for they
look cheerily all right with every-
thing.

Why not try a gaudy waste basket
by the side of the staid desk? Or
a gay magazine box that can be
moved to this chair or that or out
onto the veranda, always carrying
cheer with it? If a larger piece
can be afforded, one of the repro-
ductions of old Italian furniture
may be just the thing.

Beauty From Europe
Italy and France are sending us
some beautiful extras that strike the
right note for spring decoration.
They are peasant art objects and
carry with them the same colorful
atmosphere that all European peas-
ant life exudes.

New and unusual is a French
newspaper and magazine stand in
vivid red and white zig-zag stripes
with no less than a picnic under
the shade of a big tree for the de-
corative motif on its front. The green
of the grass and tree, the yellow,

pink, red, blue and white of the
costumes of the little holiday figures
are cheerily decorative and pleasing.

Scorning a round or square shape,
a large sized waste basket is oval.
This has a brilliant gold lining and
its black border is outlined in gold.
Quite regal, also is the old French
court scene that marches clear
around the basket in gorgeous color.

For the first time this year, re-
productions of the old "Oliver
Cromwell stool," a piece of furni-
ture Cromwell made famous by lik-
ing to sit on it, are available. They
are hand-carved, with the same de-
sign of the original. The repro-

ductions aren't stools, really. They
appear dignifiedly as tea-tables, or
as high end tables.

If one wishes to go in for color, a
Venetian peasant chest is just the
thing. These are apt to be any-
where from a cream to an orange
yellow and their decorations picture
the loveliest of lowly field flowers in
gorgeous full bloom.

Most popular of this type is the
chest of drawers pictured. It is
narrow enough to fit any apartment
but roomy enough to hold all kinds
of things.

The addition of just one piece
may seem a little thing. But after

all, as a gay flower dresses up a
suit, so just one bit of new house-
hold accessory this year is likely to
add it full quota of animation to the
home that may need just that touch
to make it perfect.

Chiffons, Laces Vie

Flowered chiffons and laces are
rivals for favor in the mode for
summer, the former which had a
pronounced success last season,
coming back now in greater variety
of design and in enchanting colors.
In these both large and small pat-
terns are good. All of them are
softly graceful and feminine in tone.

Peoples Economy Special

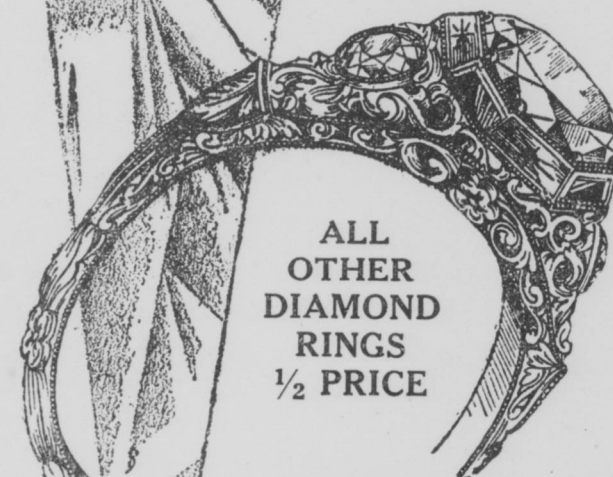
THURSDAY ONLY!

Choice of Six White Gold Diamond Rings

12.75

Only once in a
"blue moon" such
an opportunity.

No obsolete styles
—every ring
worthy of more
than twice the
price. Be early.



ALL
OTHER
DIAMOND
RINGS
1/2 PRICE

SPECIAL! PRE-EASTER OFFERING
WAY BELOW COST

Choice of our entire stock of cuff links,
bar pins, watch fobs, lockets, scarf
pins and lavallieres, regardless of for-
mer price

89c

Peoples Outfitting Co.
133-135 West Washington Street.

Layaways
Invited

CHARLES

Layaways
Invited

4 W. WASH. ST.

EASTER FASHIONS

Emphasize the Smarter Modes for Spring

CHARMING COATS

in Broadcloth,
Suedines,
Twill Cloths,
Bengalines,
Kashas and Satins

\$25

Fur Trims
and Scarf
Tie Models

Dressy coats of unusual style
appeal. Many have large col-
lar and cuffs of fur, others
with novelty backs and side
trims, capes and other smart
innovations. All are attrac-
tively low priced.

—Third Floor.

DRESSES

Decidedly Smart and New

New arrivals feature
the latest style crea-
tions in prints, georg-
ettes and crepes—very
stunning and excep-
tional in values.

\$16.75

—Second Floor.

NEW HATS

in Crochet Visca—Fancy Straws
and Flower Trims



Very Smart and Attractive

Reflecting the very beauty of spring in their smart
flower adornments. A variety of fascinating
styles and new shades that are different.

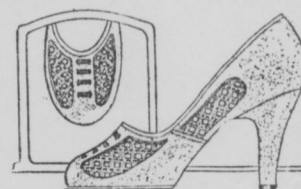
A most gratifying choice of the
newer hat designs in large
and small head sizes.

—Main Floor.

Easter Footwear

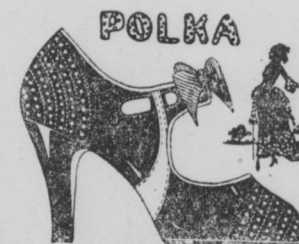
\$3.85

\$4.85
and
\$5.85



Like the Breat'
of Spring

HONEY BEIGE KID,
PATENT,
SATINS,
GREY KID,
RED KID,
BLUE KID,
Patent and Colored Kid
Trimming.
ALL STYLE HEELS,
ALL SIZES AND
WIDTHS.



—DOWNSTAIRS SHOE DEPARTMENT—

Introducing
Jacqueline
MODES
For
Ultra
Spring Wear

Jacqueline
MODES

\$3.85 to \$6.85
You Can't Pay More.

MORRISON'S
FOUNDED 1864
26 W. Wash. St.

AGENCY FOR
Jacqueline
MODES
Designed by
Wohr
Creator of Artistic Footwear

Spring Shirts
in the new and wanted
fancy and plain colors,
collar to match and collar
attached

\$1.85 \$2.45 \$3.45

**Spring
Neckwear**
in plain and fancy pat-
terns, with colorings to
blend with the new shades
in spring suits and coats.

\$1 \$1.50 \$2

Jude's
MEN'S DUDS
19 E. OHIO ST.
15 N. PENN ST.

"Walk Up a Flight
and Save the Differ-
ence."

**Spring Styles
Ready**
Wonderful assortments.
All the new color effects
and fabrics. Surprisingly
low prices.

**SUITS and
TOPCOATS**
For Men and Young Men

\$21.50
Most wonderful values in
Broadway tailored clothes.

RUBENS
40 W. Wash. St.
Upstairs, Second Floor of
Thompson Bldg.