

WOMAN GIVEN FULL CREDIT IN AUTO COMFORT

Demand Forces Makers to Bow to Feminine Taste in Cars.

One of the distinct gains in automobile 1928 design, in the opinion of engineering critics, is the remarkable convenience and ease of driving. This is by no means confined to the higher priced cars, according to R. V. Law, Hudson-Essex distributor, but has had, in fact, its most striking advance in the cars of moderate size and cost.

"You can thank the woman motorist for that," said Law. "Men are driving in better comfort and with greater ease today because women have insisted on higher standards of detailed finish in the cars."

"Take such an item as an anti-theft lock. To engineers that was simply a mechanical device, to be considered wholly on mechanical merits. But the woman driver called for a lock which could be reached without bending and reaching and which would not soil gloves. The result is a key-lock on the dash—where insurance companies regard as more efficient and which certainly is far more convenient."

"One of the most popular moves which Essex ever made with women was to install the starter on the dash. It is undeniably so much more convenient. We now have cars, too, with the motor on the dash, where it can be seen day or night; with oil and gasoline gauges constantly visible; with an ammeter showing the operation of the electrical system. Thus, the motorist can see at a glance how his car is working in every respect."

"Such a detail as the door handles has not been overlooked. These are now of graceful as well as useful design and carry a pattern that runs through other items of the finish. Doors may be locked from the inside by moving the handle forward an inch or so. The window regulators operate with hardly any effort at all, and are designed to match the door handles."

BAN TECHNICAL WORDS

Common Terms Are Used for New Oldsmobile Driving Instruments.

The tendency of engineers to use readily understood terms rather than technical phrases is apparent on the instrument board of the new Oldsmobile. "Current" has replaced "ammeter" on the charging indicator; water temperature is used instead of thermometer, and the oil pressure, beside having the pound pressure figures, also is divided into an idling and a driving range.

Famous Race Driver Joins Marmon Motor Car Firm



Earl Cooper

Turning from the fascinating atmosphere of the race track to the more practical occupation of experimental engineering, Earl Cooper, a leading figure in automobile racing for nearly a quarter of a century, is now a member of the experimental engineering staff at the factory of the Marmon Motor Car Company.

Like many of his fellow drivers of years gone by, Cooper is utilizing the experience and knowledge gained on the race courses of two continents in the development of passenger automobiles.

Cooper's new association with Marmon recalls his remarkable record as an automobile race driver and also brings back to memory the series of outstanding victories that were won by Marmon automobiles in 1900, 1910 and 1911 and which were culminated in the triumph of the Marmon Wasp driven by Ray Harroun in the first 500-mile race on the Indianapolis speedway, May 30, 1911.

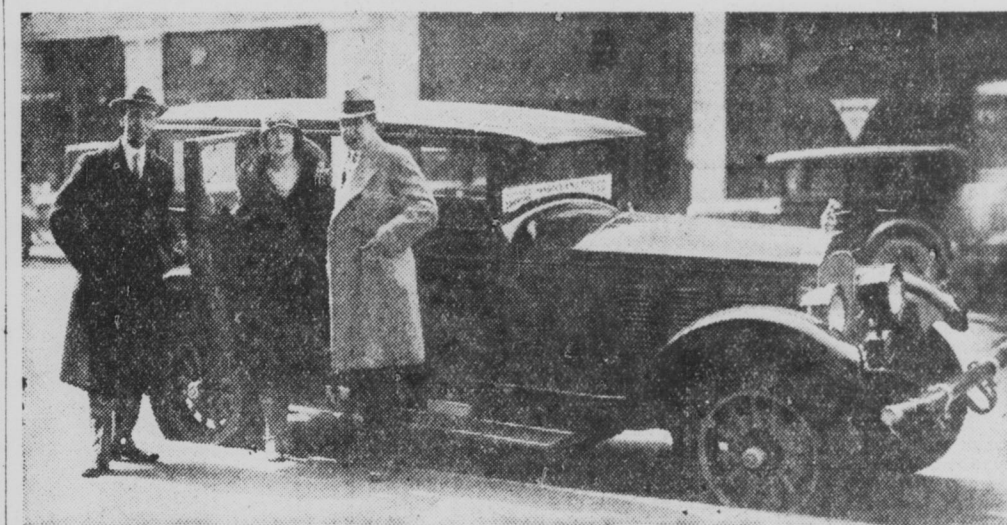
Cooper's ability as an engineer was demonstrated at the annual Indianapolis race last Memorial day, when he entered three front wheel drive and one conventional drive automobiles of his own design in the contest. These cars were piloted by such famous drivers as Bennie Hill, Pete Kreis, Bob McDonough and Jules Ellingboe. Cooper's association with Marmon and his work in the development of Marmon straight-eight automobiles are direct evidence of the strong influence of automobile racing on the design and construction of passenger cars. It is interesting to note that, beginning in 1924, every car that finished the famous Indianapolis race was of the straight-eight design.

More than twenty years ago Cooper began his career on the race track and jumped into nation-wide

prominence when he won the road race championship in 1913 by scoring seven consecutive first places in as many starts at an average speed of better than seventy miles an hour.

Through a ruling by the South Carolina State Supreme Court, gasoline cannot be sold in that State on Sunday. This law grew out of the old Sunday "blue laws" of South Carolina.

'Presto'—Magician's Wife Gets New Car



Howard Thurston, famous magician, playing this week at the English Theater, is here shown presenting his wife with a new Willys-Knight Great Six sedan that he purchased from the Capitol Overland Company, local Willys-Overland distributors. Thurston also uses a Whipper coach in one of his stage tricks, making the automobile and seven girls disappear from view. Shown in the picture from left to right are: J. M. Block, president of Capitol Overland Company, Mrs. Thurston and Howard Thurston.

DODGE COLOR VARIETY LARGE

Twenty Combinations Available Now, Says Dealer.

Recent additions to the large and varied assortment of color combinations in which Dodge Brothers senior line is available have increased the number to twenty, according to a statement received from the factory by T. A. Bell, president of the T. A. Bell Company, local dealer.

"Almost any day visitors in the 1,955 foot long assembly building, which is devoted exclusively to the production of the Dodge Senior line and which is said to be the longest automobile factory in the world, will find cars in twenty different color combinations on the assembly lines," Mr. Bell says.

"This opportunity of selecting a color scheme expressive of the individuality of the purchaser in contrast with accepting the 'sameness' of appearance which in the past has characterized nearly all but custom built cars makes a strong appeal to the buyer."

"The wide variety of colors in which the Senior line is now offered affords the discriminating buyer this opportunity without the delay of waiting for a special job to come through production and the added expense. Women whose selections are generally influenced by beauty of line and color appeal can almost invariably find exactly what they want in the large variety of Senior offerings—something different."

Automobiles outnumber telephones in use in the United States.

Tail Lights

BY SWEDE SWANSON
THE dread of New York chauffeurs and taxi owners is the Sunday driver (the man who keeps his car in the garage all week to use it only on the holiday).

New York's case is no different from that of any other city, except in the degree of traffic. The Sunday driver comes out of his garage here as elsewhere, takes to the highways and becomes the dread of regular daily motorists.

That may be only a state of mind, without cause, in most cases. Yet the fact that the "Sunday driver" complex exists points to some reasonable ground for it. It goes back to the all-too-careful driver who slows up traffic behind, to the nervous driver who puts those about him at high pitch, and to the inexperienced driver who endangers others by his maneuvers.

If only the Sunday driver would concede and remember that he is an infrequent motorist, and drive moderately and carefully, if only he acquainted himself with traffic rules and signs, there would be much less resentment against him than there is today.

A different kind of an automobile race is suggested by Ettore Bugatti, French motor car manufacturer. He suggests that a number of well-known racing drivers be equipped with exactly the same type car and the winner will prove himself the best driver.

We suggest Stutz Black Hawks be used. These birds have the "fly" in them, all you need is a lot of lead in your feet and the nerve to hold the wheel.

STAR OUTPUT GROWS

Production Is Increased to 500 Cars Daily.

T. S. Johnston, assistant to W. C. Durant, announces starting on Feb. 20, a second assembly line in the Elizabeth, N. J., plant of Durant Motors, Inc., bringing an increase of production to 500 cars daily.

As fast as material can be obtained production will be stepped up further. It is understood that this is greater production than any plant in the country making cars at as low a price as the new Star.

It is anticipated that the first of March also will mark the commencement of operation on the third assembly line which will add 250 more cars to the daily output. Plans are under way for the installation of a fourth assembly line.

giving this plant a total production of 1,000 or more cars daily. Only in a plant of this size, the largest under one roof in the auto-

motive industry, could four assembly lines abreast, each 1,900 feet long, be contemplated.

AUTO TAILORS

Custom Built SEAT COVERS

Skillful TOP and TRIM REPAIRS

HABIG MFG. COMPANY
1935 N. Meridian St.
Lincoln 8302
Copyright, 1928, Habig Mfg. Co.

Ford and Chevrolet BATTERIES \$8.95

PUBLIC SERVICE TIRE CO.
116 E. NEW YORK ST.

Is a Half Hour of Hard Work Changing a Tire Worth 2c?

Save your money, time and energy

Bowes' Seal-Fast Tire Patch

Pays because it Stays

Patented Apr. 8th, 1924

In Point of Service

It Costs the Least

Particular Dealers Handle "Seal-Fast"

Bowes' Seal-Fast Corporation
Indianapolis, U. S. A.

World's Greatest Value altogether or part by part

Aside from such self-evident superiorities as its brilliant performance, beauty and quality that you can see and feel in the very upholstery, the wheel you handle and the hardware you touch—

Please Compare With Any Car

—the advantages we have itemized here because they speak for the complete quality way in which the New Essex Super-Six is built—things seen or unseen.

The Four-wheel brakes used on the Essex Super-Six are the same type used on costlier cars and assure the maximum brake safety, as well as the softness of control that you associate only with high priced cars.

The instrument board includes motometer, gasoline gauge, oil gauge, speedometer and ammeter.

The Essex Super-Six high compression motor is patented and is so far as we know the most powerful and efficient motor of its size in the world.

ESSEX Super-Six

COUPE \$745 (Rumble Seat \$30 extra) COACH \$735 SEDAN (4-door) \$795

All prices f.o.b. Detroit, plus war excise tax

Buyers can pay for cars out of income at lowest available charge for interest, handling and insurance

R. V. Law Motor Co. Distributors

1219-1225 N. Meridian St. Main 4082

—ASSOCIATE DEALERS—

P. B. SMITH AUTO CO. 450 N. Cap. Blvd. Lincoln 3603
OAKLEY MOTOR SALES CO. 1065 S. Meridian St. Drexel 4743

G. WININGS CO. 3816 E. Wash. St. Irvington 3598
NORTH SIDE HUDSON-ESSEX CO. 2411 Central Ave. HEmlock 3524

Price Reductions Create a National Sensation!

The PERFECTED Whippet

the leader in Beauty and Quality

Gasoline tank is at the rear, away from the heat of the engine; costs more to build, but is safer

Coach \$535

"A Quality Car at the lowest price in our history"

Since the announcement of sensational price reductions the popularity of the perfected Whippet has grown by leaps and bounds. Today four great Willys-Overland plants are being taxed to capacity to meet the demand.

Present light car standards are a tribute to Whippet pioneering. Four-wheel brakes, lower center of gravity, greater economy, greater roominess, quieter engine operation, faster speed and pickup, greater beauty—these are a few of the many advantages in which the Whippet continues to lead today.

Among the many things you will like in the perfected Whippet are improved bodies in a wide range of beautiful colors and fitted with cadet-type visor, full crown fenders, full-pressure lubrication, silent timing chain, gasoline tank in rear, long semi-elliptic springs, oversize (4.75") balloon tires and snubbers, an adjustable steering post, automatic windshield wiper, rear view mirror and stop light.

ORDER NOW FOR EARLY DELIVERY

CAPITOL MOTORS COMPANY

DISTRIBUTORS
Capitol Avenue and Michigan Street (Gibson Bldg.)

Phillips Haynes Auto Sales, Inc. 2605 West Michigan Street
Bohannon Sales, Inc. 3122 East Washington Street
C. K. Marlin 4151 West Washington Street
C. L. Scott Whippet-Knight Sales 832 North Meridian Street

EQUIP WARSHIP FOR LAND, SEA AND SKY

Part of the regular equipment of the U. S. S. Lexington, airplane carrier, one of the largest in the world, is a Graham Brothers truck, which carries officers or marines to the scene of action. On top of the truck is carried an airplane wing to be rushed to any point where the emergency exists.

The keel for the Lexington was laid Jan. 3, 1921, and the ship was launched Oct. 3, 1925, but did not leave the Fore River Shipyards, Bethlehem Shipbuilding Corporation, Quincy, Mass., until Jan. 5, 1928. Some interesting data regarding the new addition to the navy is as follows: Cost forty to fifty million dollars; length, 888 feet; breadth (extreme) 106 feet; carries 86 planes; speed 33 miles per hour; engines, combined horsepower, 180,000; crew of 4,500 men and 200 officers; has eight 8-inch guns and twelve 5-inch guns; is largest ship in United States navy.

Since the completion of the new Holland tunnel under the Hudson River, connecting New York and New Jersey, automobile ferries are reported to have lost nearly 50 per cent of their business.

OLD TRAILS

For Auto Insurance—Call Riley 1301

GUARANTEE TIRE & RUBBER CO.

Everything for the Car for Less

Rent a New Ford Drive It Yourself

SAUNDERS SYSTEM

39 Kentucky Ave. RI. 2233

The Original PAY AS YOU RIDE QUALITY TIRES

Payments as Low as \$1 a Week

THE UNION TIRE CO.

Geo. Medlam, Pres. MA 12 6273
Cor. S. Ill. and Georgia St. Open Till 8:00 p. m.

Far ahead

Never a car so Beautiful.. and Never a car so Good

Today's Buick brings to its owners a higher degree of beauty than any other car in the Buick field—

—the beauty of smart, low lines—the beauty of radiant colors—and the beauty of princely interiors upholstered and appointed in rare good taste.

Accompanying this beauty—and giving it real meaning—is the superlative goodness of Buick engineering.

Buick's famous Valve-in-Head 6-cylinder engine—Sealed Chassis—double-drop frame—and Lovejoy hydraulic shock absorbers—place Buick far ahead in performance and comfort.

See Buick—drive it—compare it with others... there was never a car so beautiful and never a car so good!

SEDANS \$1195 to \$1995 COUPES \$1195 to \$1850 SPORT MODELS \$1195 to \$1525

All prices f.o.b. Flint, Mich., government tax to be added. The G. M. A. C. finance plan, the most desirable, is available.

BUICK MOTOR COMPANY

Division of General Motors Corporation—Indianapolis Branch
Meridian at Thirteenth Street

CENTRAL BUICK CO. 2917-2919 Central Avenue
JNO. A. BOYD MOTOR CO. 833-837 North Meridian Street
THORNBURG-LEWIS MOTOR CO. 1302-14 East Washington Street

WHEN BETTER AUTOMOBILES ARE BUILT, BUICK WILL BUILD THEM