

FEW CHANGES MADE IN 1928 HUDSON, ESSEX

Company Has Refined and
Bettered Both Cars
in Detail.

In conformity with latest styles in body design, an advanced vogue typifies the new Hudson and Essex models now on display for 1928.

R. O. Law Motor Company, 1219 N. Meridian St., distributor, points out the fact that only a few changes have been advisable in the chassis design of the 1928 Hudson and Essex cars. Pursuing its progressive policy of constant improvement, Hudson has refined and bettered both cars in detail, Mr. Law said, and continued:

"The outstanding change to be found in the 1928 Essex is the adoption of Bendix four-wheel brakes fully protected from dirt, mud and water. Balloon tires and front-wheel brakes have made new demands on steering control. Recognizing this, the Hudson engineers have once again shown wise discrimination in choosing for Essex the very best of the newly developed steering mechanism of the worm and tooth disc type. Both Hudson and Essex cars have been equipped with a new steering wheel which adds greatly to operating comfort.

Body Construction Improved
"Believing that nothing important need be done toward mechanical improvement, Hudson engineers and designers devoted the large part of their attention to meeting the latest demands in body construction.

"The most recent trends in this direction call for cars that are longer, roomier and closer to the ground.

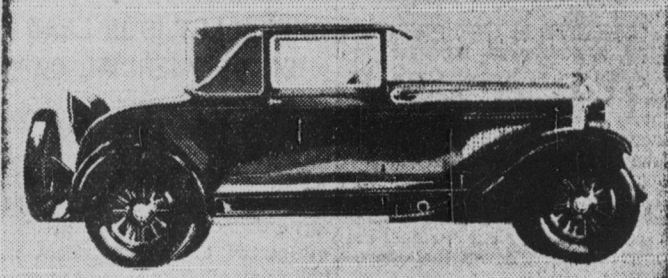
"In the new Hudson and Essex super-sixes this latest vogue in motor cars has been expressed in the adoption of even more pleasing contours, new lamps, new fenders, new radiators and numerous other unique body details. The new radiator is higher, deeper and a trifle more slender, with its pleasing proportions emphasized by the vertical lines of the attractive shutters which are peculiar to the Essex in its price class.

Essex Interiors Are Roomier

"Essex interiors are longer and roomier and head room has been unimpaired. Rear body structure has been widened two inches to provide additional shoulder room. The sedan doors are three inches wider, and the front seat is adjustable fore and aft. The coach front seat construction permits passengers to enter the rear seat without front seat passengers arising.

"Hudson is featuring three new custom types—a Victory type of coupe, a five-passenger landau sedan and a seven-passenger sedan. The Victoria is a new model altogether. The landau sedan replaces the brougham, while the seven-passenger sedan is a familiar car of wide appeal and new style characteristics. The interiors of the custom bodies are especially luxurious.

Dashing Models in Pontiac



New Series Pontiac Six Sport Cabriolet

From the dashing rakishness of the sport roadster right up to the distinctive luxury and smartness of the new sport landau sedan, the new series Pontiac sixes present an appeal which runs the gamut from youth to old age.

The roadster offers the racy, snappy lines that delight "flaming youth." The coupe gives the practical features that the business man demands. The sport cabriolet combines a mixture of spirited action and stamina that

appeals to the "younger set," a car that can "hold its own" with the smartest at the country club. In the two-door sedan is offered a new standard of beauty for the family man who needs the extra room to take the children for an outing, while the four-door sedan combines a grace and dignity that the older generation may well be proud of.

And the sport landau presents a view of the swank luxury and smartness of appointments that makes it a car for all occasions.

ALL-AMERICAN SIX IS BIG OAKLAND SELLER

Remarkable Demand Is Shown for
New Models.

The consistent success of the Oakland All-American Six since its introduction last August has contributed greatly to the high production and sales marks established during 1927 by the Oakland Motor Car Company.

Factory sales figures, comparing the five months of 1927, during which the Oakland All-American Six was on the market with the corresponding period of the previous year, reveal a remarkable demand for the new models.

Oakland Six car sales for the last five months of 1926 were 20,621. During the last five months of 1927, the Oakland All-American Six sales were 31,638, a net gain of 11,017 or 53.4 per cent. Sales and production totals for both periods are practically identical.

These figures constitute a complete endorsement of the company's rather revolutionary changes, embodied in the larger, more powerful and more beautiful Oakland All-American Six.

GRAHAM NAME IS USED

Woven Into Corporation Designation
of Paige Motors.

DETROIT, Feb. 11.—Along with the public announcement of the entirely new line of Graham-Paige motor cars, produced by the three Graham brothers, comes the long-expected news that the Graham name is to be woven into the passenger car business with which they are now associated.

At a recent meeting of stockholders of the old Paige-Detroit Motor Car Company, the corporate name was changed to "Graham-Paige Motors Corporation."

Under this new firm name, the company will operate both the Warren Avenue plant at Detroit, and the new body plant at Wayne.

MAPLE SYRUP OUTPUT LIKELY TO BE SHORT

Weather Blamed by Bartholomew
Tree Owners.

By Times Special
COLUMBUS, Ind., Feb. 11.—Maple syrup prospects in Bartholomew County are not good, according to those with knowledge of the sap crop, who assert weather conditions are unfavorable. Last year's price for syrup was \$2.50 a gallon to the producer, and a short crop for the present season is expected to cause a raise in price.

Several camps in the county have been opened and others are preparing for the season's rush. Most of the maple trees of the county, about 1,000, are in German township.

Eleven Hogs Stolen

By Times Special
WASHINGTON, Ind., Feb. 11.—Reward of \$50 is offered for the arrest of thieves who took eleven hogs, averaging 70 pounds each in weight from the farm of John Backes, two miles south of here.

Is a Half Hour of Hard Work Changing a Tire Worth 2c?

Save your money,
time and energy
Bowen Seal-Fast
Tire Patch

Pays
it because
it Stays

Patented Apr. 6th, 1924

In Point of Service
It Costs the Least

Particular Dealers Handle "Seal-Fast"
Bowen Seal-Fast Corporation
Indianapolis, U. S. A.

24 MODELS IN 1928 NASH LINE

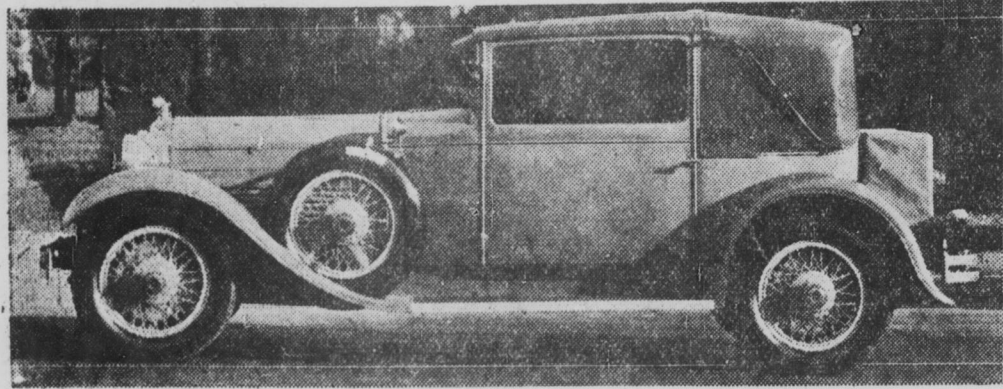
Great Variety Offered by
Car Makers.

For 1928, Nash offers twenty-four models—the most complete and by all odds the most beautiful group of body styles ever to bear the name of this manufacturer.

The advanced six series includes ten models—six on the 127-inch wheelbase chassis and four on the 121-inch chassis—and there are eight Special Six body styles and six Standard Six models. A car to fit practically every requirement is to be found among these twenty-four types.

Furthering the note of style and

Stutz Displays Deauville Landau



Stutz-Weymann Deauville four-passenger landau.

fashion which is outstanding throughout the line, Nash offers are as many as three combinations from which to choose. Side-mount-

closed cars; in some instances there are as many as three combinations from which to choose. Side-mount-

ed wire wheels—a smart, new idea this year for cars in the Nash price field—may be had on all sedans and

coupes in the Advanced Six and Special Six series.

This special equipment includes six wire wheels, the extra wheels being side mounted forward of the doors; two tire covers, six tires, rear view mirror mounted on the left-hand spare wheel and folding trunk rack in the case of those models which do not already possess in-built trunks. The prices range from \$115 to \$165 additional to factory list.

In extending the line to its broad range, no effort has been spared to improve the cars and to develop even greater efficiency in their manufacture. At the same time, due to the large volume of business which the company enjoys, it was found possible in the past year to substantially reduce the price of many models.

Therefore, Nash is able to enter the new year with a product which honestly can be said to offer the greatest values in the history of the company.

See **BUICK** and
you see
BEAUTY
LUXURY
COLORS
ENGINEERING
VALUE
for **1928**

All features—all qualities—all standards of performance, appearance and value—attain a new high point of perfection in today's Buick.

So faithfully does Buick mirror the vogue, that motorists can obtain a complete picture of vital advancements for the year by inspecting this one modish, finely engineered motor car.

Smart, low-swung bodies by Fisher—vivid new color harmonies—and exquisitely appointed interiors—introduce an entirely new order of beauty, luxury and distinction.

Lovejoy hydraulic shock absorbers, front and rear, impart a new and unrivaled degree of riding comfort. A new double-drop frame adds to travel luxury and makes possible a lowered center of gravity without loss of head-room or road-clearance. And important engine refinements produce a combination of getaway, power, smoothness and stamina far in advance of former standards.

Go to the show—see today's Buick. Seeing it, you will see beauty, luxury, colors, engineering and value for 1928!

BUICK

BUICK MOTOR COMPANY

Division of General Motors Corporation—Indianapolis Branch
Meridian at Thirteenth Street

CENTRAL BUICK CO.
2917-2919 Central Avenue

JNO. A. BOYD MOTOR CO.
833-837 North Meridian Street

THORNBURG-LEWIS MOTOR CO.
1302-14 East Washington Street

WHEN BETTER AUTOMOBILES ARE BUILT, BUICK WILL BUILD THEM

\$1095
SEDAN F.O.B. DETROIT

**BRILLIANTLY
Different**

Dodge Brothers Victory Six is not only a new car but an entirely new and better kind of a car. For the first time in history, body and chassis are a single, integral unit.

The wide, deep Victory chassis frame, flush with the body lines, eliminates the body sill and the customary body OVERHANG.

Major body parts are reduced from 367 to 81 175 pounds of useless weight are cast off!

The gravity center is radically

lowered—with head-room and road clearance unaffected.

The results cannot be expressed—they must be experienced.

No skidding or sidesway. No back-wheel "chatter" when the Lockheed Hydraulic brakes are quickly applied.

A smoothness over cobble roads that you have never imagined possible.

A swift car that is safe—a moderate-priced car unsurpassed in smartness and individuality.

Tune in for Dodge Brothers Radio Program every Thursday night, 8 to 8:30 (Eastern Standard Time) NBC Red Network

T. A. BELL COMPANY
11th and Meridian Streets
(Formerly Steinhart Building)
MA in 4366-67-68

The VICTORY SIX
DODGE BROTHERS, INC.
THE SENIOR SIX AND AMERICA'S FASTEST FOUR ALSO ON DISPLAY