

COOLIDGE TAX PLAN FAVORS CORPORATIONS

Citizens With Small Incomes Will Not Share Proposed Reduction.

By United Press
RAPID CITY, S. D., July 28.—President Coolidge has evolved the administration's tax reduction program since he has been in the White House and decided that it will be built around reduction in corporation taxes.

Every business house which has failed to receive a reduction in the recent tax revision bills will benefit by the administration project.

It is Mr. Coolidge's plan, according to indisputable authority, to recommend to the next session of Congress a plan whereby corporations will be granted a reduction from 13 1/2 per cent to at least 11 per cent.

Works Through Committee
While Mr. Coolidge desires to place himself in position so that he may not be accused of writing the new tax bill, he has definite ideas upon the subject which will be incorporated in a bill soon to be submitted to Congress through House Ways and Means Committee.

His recommendations will not include any reduction for smaller income tax payers, but will center itself about a program for alleviation of stringent levies upon all business.

It is estimated that reduction in the corporation tax from 13 1/2 to 11 per cent would result in a decrease in the nation's tax receipts of at least \$1,500,000 annually.

"Small Fry" Excluded

According to word received here, Democratic leaders who control a theoretical majority in the next Senate, will agree to the project of reducing corporation taxes, but will fight for bill reducing the levy on small incomes. Mr. Coolidge believes that assessments on incomes of less than \$10,000 have been cut sufficiently already. He thinks, according to White House authorities, that no more slashes should be made to eliminate small tax payers.

Mr. Coolidge believes that reductions also should be made in nuisance taxes, possibly eliminating levies on theater admissions and club dues. Automobile taxes should be cut from 3 1/2 per cent, possibly to 2 per cent, according to presidential authority.

\$300,000,000 Cut Possible

If this plan was carried out, Congress could afford a special tax reduction of more than \$300,000,000 without endangering, in Mr. Coolidge's estimation, resources of the nation.

No "Mellon plan" will be suggested to Congress this year and no formal presentation of the administration program may be expected. However, Mr. Coolidge's ideas probably will be impressed upon House Ways and Means Committee when it meets to frame the tax reduction bill.

REPORT MANY QUAIL

Rabbits Also Numerous in State This Season.

Reports to the offices of the conservation department indicate an unusually large number of quail and rabbits in Indiana this season.

Motorists driving Hoosier highways say that at night some traffic lanes literally are alive with young rabbits.

Virtually every section where quail customarily are found reports many coveys.

In late years land owners have learned that it is not the legal hunting which decimates the quail, but rather the cold icy winters when shelter and food are problems. Many land owners provide sanctuary by leaving brush piles in fence corners, and see that the birds are fed and watered.

ORDER VALUATION GAIN

Increase on Personal Property and Poultry in Floyd County.

Forty per cent increase in valuation on poultry and 10 per cent on all personal property, except cash, was ordered for Floyd County by the State tax board Wednesday.

Five per cent on personal property was ordered for Lawrence County.

Those left unchanged included Adams, Bartholomew, Cass, De Kalb, Elkhart, Fulton, Henry, Huntington, Kosciusko, Lake, La Grange, Miami, Montgomery, Randolph, St. Joseph, Vanderburg, Wabash, Wayne, Delaware and Warren.

POISON BEET INQUIRY

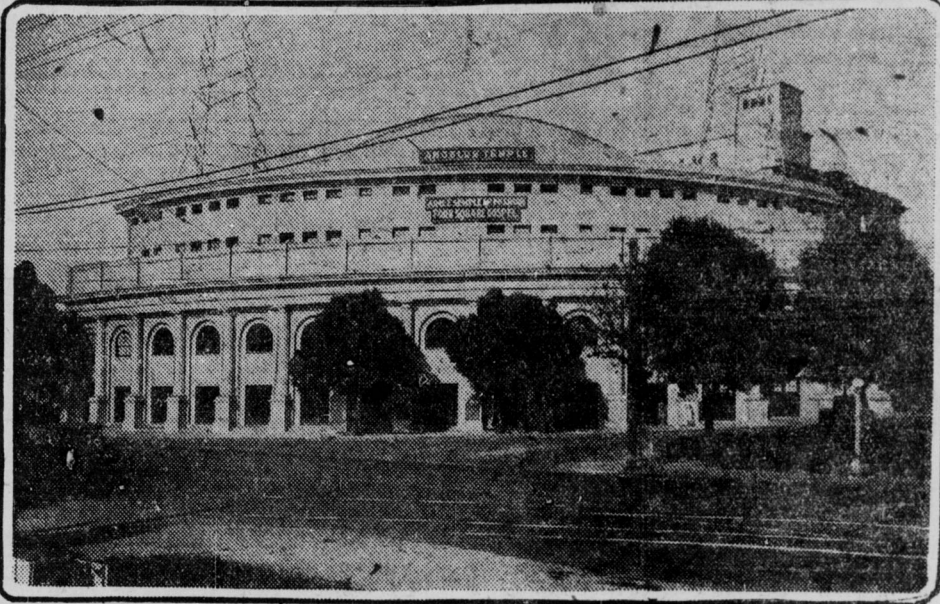
By United Press
VINCENT, Ind., July 28.—Mystified by the illness that was fatal to two members of the family of Charles Blakely and caused the serious illness of three others, authorities at Bicknell have sent the internal organs of the dead to the Indiana State Board of Health for analysis.

Fred Oliver Blakely, 8, and Opal Irene Blakely, 5, died and Walter Alvin Blakely, 2, Mrs. Blakely, and Nellie Blakely, 16, were made ill after they ate beet that the mother prepared Tuesday.

OSTEOPATHIC Health Institute
1014 ODD FELLOW BUILDING
Lincoln 1922
HEALTH BUILDING METHODS
Osteopathy, Sunlight Bathing, Fulcrum Block for Flat Feet, Quarts, Light Treatment. Results assured.

THE INDIANA TRUST CO.
Pay 4% on Savings
CAPITAL SURPLUS \$2,000,000

War Seethes Around Aimee's Temple



Angelus Temple, shown above, and its money bags are the bone of contention in the battle which looms between Aimee McPherson (right), and her mother, Mrs. Kennedy (left.)

New York Invented the Ice Cream Soda

Dumped Everything in Store Into Glass and Made Tasty Concoction.

BY HORTENSE SAUNDERS

NEW YORK, July 28.—John Robertson and Francis Tietz were born fifty years too early. They invented a popular temperance drink in a day when the world generally did not appreciate a temperance drink. They are the fathers of ice cream soda.

Had their creative genius flowered later, ice cream soda might have made them millions. As it was, it didn't even bring them free drinks—or fame.

Back in 1872, Robertson and Tietz were pals. "One rainy day," Robertson recalled, "we went into Kline's confectionery store in New York. We had at least 50 cents with us, enough to buy out the store, and we ordered everything the place offered, all at one time."

They Tried Mixing

"We found that if you dumped the ice cream into a glass of soda, and added a few strawberries or some pineapple, you had something that was infinitely superior to any ingredient taken separately."

"After that we always ordered fruits, ice cream, soda water, or ginger ale, then mixed our own at the table."

"What we considered the triumph of our combined intelligence was made by putting a chunk of ice cream in a half cup of strong, cold coffee, adding chopped cherries, pineapple and dry ginger ale to fill up the cup, with a dash of cinnamon on top."

Tastes It Yet

"I can still taste that one, though I haven't tasted an ice cream soda for years."

Obviously the boys did not hide their light under a bushel. In 1900

time other customers were ordering "what those boys were drinking," and the manager came over to find out what it was.

Flushed with pride, the two youngsters handed over their formula.

"Kline got the best trade in New York through his ice cream sodas. Eventually he was rich enough to retire," Robertson went on. "The aristocrats from Washington Square and Lower Fifth Avenue would send their footmen over for sodas, and the most imposing horses and carriages of the city would be hitched outside Kline's door."

Outgrew Soda Habit

Robertson and Tietz grew older and outgrew their passion for ice cream sodas.

Tietz went into business and Robertson in time became manager of Dorlon's famous old restaurant.

"I think my part in the ice cream soda was my only contribution to the field of invention," Tietz smiled. "I forgot all about it in later years."

"We moved to Brooklyn afterwards, and I lost track of Robertson. I haven't seen him in—it must be thirty years. I'd love to see him again."

Like Robertson, Tietz doesn't drink ice cream sodas any longer.

Nineteen cables span the Atlantic. The nineteenth was completed in September, 1926.

ONLY 50c A WEEK
Ladies' Wrist WATCHES
Dainty White Gold \$27.50
Cases \$2.50
KAY JEWELRY CO.
137 West Washington St.

Have 'em Charged!
Brownings,
118 East Washington Street
MEN'S & WOMEN'S CLOTHING

"Hot" BISCUITS
An added attraction to any meal. And it's so easy to make them. Use—
1 Cup E-Z-Bake Flour.
1 Teaspoon salt.
2 Teaspoons baking powder.
2 Tablespoons shortening.
1 Cup sweet milk.
Measure dry ingredients level, thoroughly. Mix in shortening. When smooth add milk, a little at a time. Stir lightly with spoon just enough to mix well. Turn out on floured board, roll or pat to about 1/4 inch in thickness. Cut and place in greased pan. Bake in quick oven 15 to 20 minutes. Handle dough as little as possible during rolling and cutting.

EVANS' E-Z-BAKE FLOUR
The one flour for every baking purpose.
AN INDIANAPOLIS PRODUCT OF SUPERIOR QUALITY

FLAMING YOUTH DEFENSE URGED IN ATTACK CASE

Plea Made in Men's Behalf After Girl Testifies at Shelbyville.

By Times Special
SHELBYVILLE, Ind., July 28.—Flaming youth's wildness in these days of hip flasks and petting parties forms the basis of the defense theory in the case of five young men accused of an attack on a 17-year-old girl.

Raymond Dehoe, one of the five, is on trial in the Shelby Circuit Court, the defense having elected for separate trials. Others facing charges preferred by Miss Josephine Cord, farm girl, are Theodore Seitz, Raymond Muir, Edward Hungate and Robert Kettler.

State testimony will probably be concluded today. Attorney Lee Tremaine, Greensburg, in his opening statement in Dehoe's behalf, declared he would show all that transpired during a trip of the girl and five men in an auto was done with her consent, asserting the affair was a result of today's social conditions.

The accusing girl spent three hours on the witness stand Wednesday, denying she was a willing companion of the five men on the auto trip July 5. The defense on cross-examination failed to shake her story.

So great is the public's interest in the trial that many spectators bring lunch to the Courthouse to hold seats, as only enough persons to take all seats are permitted in the room.

STEPMOTHER OF SEVEN AT 15
BIDDEFORD, Maine, July 28.—Though only 15 years old, Marie Chasse is the stepmother of seven children. She was married Tuesday to Alfred Cadorette, 33, father of the seven.

ATTACK BOND ISSUE FOR TECHNICAL HIGH SCHOOL

Taxpayers' Association Says \$450,000 Is Too Much.

Attacking the \$450,000 bond issue proposed by the school board to build an auditorium and two class room wings to Arsenal Technical High School, a remonstrance filed by the Indiana Taxpayers' Association with Harry Duno, county auditor, asks a review before the State tax board. Twenty-three signed the petition.

The petition alleges that \$450,000 is larger than the amount necessary to build the proposed additions. The school board's proposal to buy real estate for school and library purposes, with any amount remaining, is attacked on the ground that it does not specify the sites.

ARREST 'BUSINESS MAN'

Alleged Scheme to Defraud Local Men Is Probed.

M. A. Parker, Chicago "business man," was held by police Wednesday afternoon pending investigation of an alleged scheme to defraud two local men of \$400 each.

Parker told detectives he was "broke" and advertised for a manager of a local grocery store. He said two men who answered the advertisement and were to deposit bond to his credit.

T. M. Overly, Better Business Bureau manager, asked police to investigate.

TRY TO PURIFY CREEK

Attempts today are being made to keep the waters of Pleasant Run, near Garfield Park, free from pollution. Upon receipt of several complaints, Dr. Herman G. Morgan, city sanitarian, Wednesday ordered distribution of lime where odors are most offensive.

This problem confronted the board of park commissioners, board of health and other city departments last summer.

BIDS RECEIVED ON RESURFACING

Cost for Meridian St. Work Estimated \$110,000.

Bids for resurfacing Meridian St. between Fall Creek and Maple Rd., were to be received this afternoon by the park board. The engineer estimated the cost at \$110,000 for sheet asphalt.

This improvement will give Meridian St. one of the most important traffic arteries, excellent surfacing between Washington St. and the Canal, the rough section between St. Joseph and Sixteenth Sts., having been widened and resurfaced this summer. Motorists have been agitating for the improvement for years.

Bids also were to be received for the new brick and stucco community house for Brookside Park. The architect estimated cost at \$109,500. Bids received three weeks ago were rejected because the lowest was \$120,000.

Hearing was to be held upon the damage roll for acquisition of thirty-seven acres for a playground south of Tenth St. and west of Olm Ave. Appraisers report the property will cost \$27,000.

OUTFITTERS TO THE WHOLE FAMILY
Chain Store Buying Enables Us to Sell for Less!
GLOBE STORES
Main store—330 W. Wash. St.
Store No. 2—450 W. Wash. St.

SMART APPAREL
On Easy Terms
PURITAN CLOTHING STORES
131 W. Washington St.



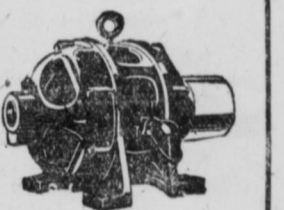
Can you rush this job?

is always asked when a motor is down

Let Westinghouse answer by quoting a typical Service Shop Report.

"Received rush call 12:30 P. M. Sunday, advising that 2200-volt A. C. motor was out of commission and plant shut down."

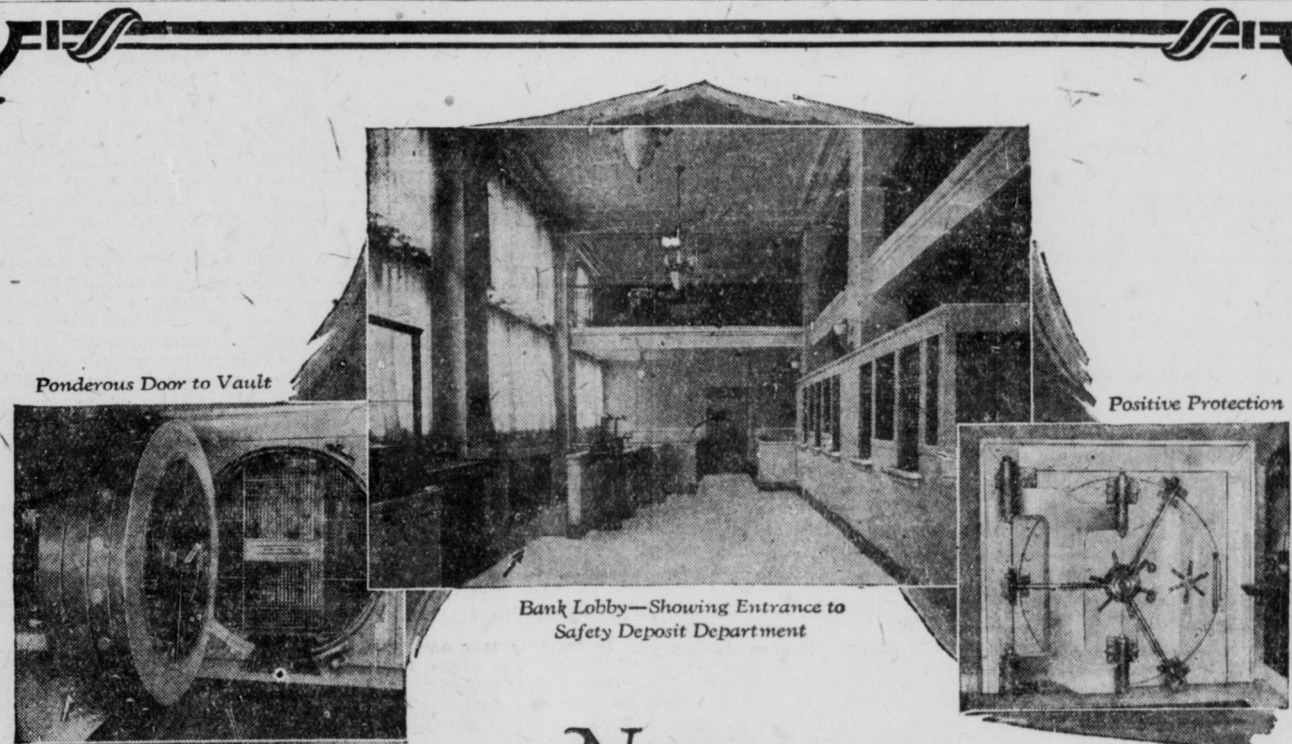
"Engineer left at 2:30 P. M. Arrived, he found three coils burned out. New coils were made. Machine placed in service 8:30 A. M. Monday."



Westinghouse can always rush repair work because it has the right men—the right tools—the right materials. And for the same reasons, it can always do a 100 per cent job.

Your nearest Westinghouse Service Shop is located at
Westinghouse Elec. Bldg.,
820 N. Senate Ave.
Indianapolis, Ind.
Day Phone—Lincoln 6391
Night Phone—Randolph 6633

Westinghouse



New Safety Deposit Department Now Open

BUILT of solid steel—into the massive concrete foundation of the 12-story Inland Bank Building—the Safe Deposit Vault of the Inland Bank & Trust Co., stands as the material evidence of positive safety. Protecting the Vault opening is a ponderous door capable of withstanding the most powerful explosives or the concentrated attack of an acetylene torch. Guarded by electric alarms and special police service both day and night, this Vault is the last word in absolute protection.

The location of the Vault within the bank—based on a careful study of the requirements of vault users—affords you the greatest convenience and the utmost privacy.

Your strong steel box inside this vault is your own private compartment. It can only be opened with your key, in your presence—after proper identification.

Here is convenience and absolute protection—for less than 1 cent a day. Why take chances?

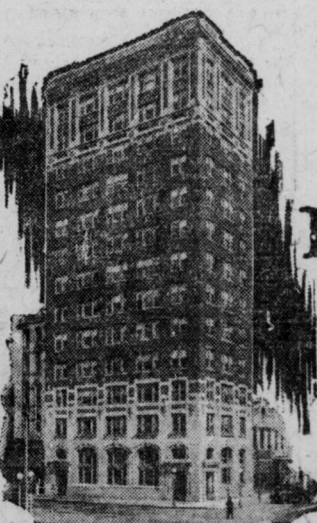
{ BOXES . \$3.00 }
AND LARGER

INLAND BANK & TRUST CO.

Controlling the INLAND INVESTMENT CO.

Corner Market and Delaware Streets
INDIANAPOLIS

General Banking
Real Estate
Trusts
Investments
Insurance
Safety Deposit



Inland Bank Building

