

FINGERPRINTS OF TWINS DECLARED TO BE NOT ALIKE

Scotland Yard Detectives Deny Claim Made by Professor.

By United Press LONDON, March 18.—Scotland Yard has emphatically refuted claims made by a local professor that the finger prints of twins are often similar. No such instance has ever been discovered in the history of the fingerprint system, it is said.

German, Dutch and Swiss police authorities quickly wrote to Scotland Yard asking for information of the report from England of the similarity of the finger prints of two twins and pointing out that if the professor was correct the whole system of police identification was threatened. Scotland Yard has replied that the professor, William Crowther of University College, was mistaken.

Prof. Crowther said that twins often showed a resemblance not only in build and size and shape and appearance, but in blood pressure and fingerprints. He cited the case of two twins, George and Edward Ellis, whose finger prints, he said, were similar.

Sir Wyndham Childs, assistant commissioner of police and head of the criminal investigation department of Scotland Yard, proved that the professor was wrong. He said that the Yard had dealt with over four million finger prints and no two had ever been found alike.

"The system has never failed," said Sir Wyndham. "Although the formation of the fingers of the twins resembled each other in many respects, when it came to the finger prints they were totally dissimilar. You cannot split straws; finger prints are alike or they are not alike. George Ellis, for instance, has three radial loops and seven ulnar loops, while Edward has one radial loop and nine ulnar loops. Any expert could see the difference in a minute."

GOV. WHITFIELD, MISSISSIPPI, DIES

By United Press JACKSON, Miss., March 18.—Governor Henry L. Whitfield of Mississippi died early today after a long battle with blood poisoning.

The Governor lapsed into unconsciousness at noon Thursday, shortly after directing his funeral arrangements, in which he asked that his rites be simple and that friends send no flowers. He also requested that his military staff act as pallbearers and that the State flag be draped around his casket.

He had been sinking rapidly since his return here from Memphis, Tenn., on crutches several months ago. His left leg was amputated at a Memphis hospital in an effort to check spread of the poison.

ADVENTURES IN PEARLS

Stories of pearls are winning beautiful prizes for local persons and already a number of girls and women have been made happy through merely writing a short, 200-word story on these gems.

The story plot you have been thinking about should be put on paper at the first possible moment, because you too, may be the author of the winning story which will be published daily in The Times.

The prize, a five-pearl strand of the famous genuine Aida-A-Pearl, is awarded the winner through a Times order on the Julius Walk & Son Jewelry Store, 5 and 7 E. Washington St.

This story may be typewritten or in script. The plot and action must center around pearls. It may be true or fictitious.

By Lenore Knight, Morgantown, Ind.

It lay on the table in the drab little room, matchless, glowing—a priceless pearl on a platinum chain, gleaming against the velvet of the little black case in which it had come.

SHORT TRIAL FOR DEARTH FORESEEN

(Continued From Page 1)

their papers were confiscated, and they were brought before Judge Dearth in his courtroom and threatened with some undescribed penalty if they again sold copies of the paper which had been taken from them.

Aside from proving the fact that the orders for this confiscation and this seizure of the boys came from the judge, little time will be spent on that matter.

Murray May Be Called

It is also probable that Superior Court Judge Robert Murray will be called to tell why he went to the Legislature in 1923 to secure a special jury commissioner for his own court. Up to that time the jury commissioner from the Circuit Court had drawn juries for both courts, as is done in most jurisdictions.

Former Judge Joseph G. Loeffler, it is understood, will be served with a subpoena duces tecum and asked to bring certain documents in his possession to the trial. He was judge when Dearth served as prosecutor of the county. John O'Neill, who was attorney for Sheriff Harry McAuley when Dearth threatened his impeachment last summer, will also be summoned. He will be asked to bring such evidence as he had prepared for a defense of McAuley had the charges not been dismissed by Dearth.

Jury Evidence Sought

Attorney Lon Guthrie, who testified before the House judiciary committee concerning juries, and Francis A. Shaw, former president of the Muncie Bar Association, will be on the short list of witnesses to be called.

Lemuel A. Dawson, jury commissioner pro tem. in 1925, will be summoned and asked concerning the summoning of juries under the orders of Judge Dearth.

Considerable confusion has resulted in the county clerk's office from the race between the House

The room was a small, dark, back-hall bedroom. Its owner, clad in a cheap cotton kimono, stood looking at the jewel. She knew it had been sent by the president of the firm in which she was the youngest, poorest paid and most beautiful stenographer. She knew that if she kept it it meant more jewels, silken clothes, luxuries. But it meant, too, giving up her dreams. Dreams of a cottage in the country, of fresh-faced children, a laughing young husband.

What should she do? Wearily she walked to the window and looked out. In the lighted window opposite were two curly-haired tots in pajamas, listening, entranced, before the radio. As she watched a woman came into the room and spoke to them. Immediately they left their places and went to kneel beside the bed for their evening prayers.

The girl turned quickly. She snapped shut the velvet case and rewrapped it. Her decision was made. It was not worth the price. The jewel would go back.

managers and the defenders of Dearth to search the jury records under Dearth. Both sides have carefully checked these lists with the purpose of determining whether unqualified persons were drawn in suspiciously large numbers.

The statement that 250 witnesses would be called by Judge Dearth in his defense has occasioned considerable speculation. As far as is known no subpoenas have been served and Dearth's attorneys have not been noticeably active in the preparation of evidence.

Expect No Prolongation

Although making no statements, the House managers have indicated that they do not expect a prolonged hearing before the Senate.

Interest in the hearing here centers largely upon the question of whether Judge Dearth will endeavor to avoid any trial before the Senate through interposing objections to the power of the Senate to impeach and whether that effort may be successful. One of the attorneys who was in the conference when overtures were made to the House of Representatives to compromise matters in order to prevent an impeachment vote and when the House issued its famous ultimatum of a resignation within the hour, states that Judge Dearth at that time declared he wanted a full and complete inquiry. In view of his attitude, this attorney states that any effort to block such an inquiry is puzzling.

ACTRESS' BODY FOUND

Man Admits Choking Woman—Stomach Trouble Complication.

By United Press ERIE, Pa., March 18.—While police this morning were holding K. H. Bechtal of Buffalo, here in connection with the death of Virginia Gibney, 40, of Philadelphia, in the chorus of a burlesque show, who was found dead in a downtown hotel early today, her nude body lying prone across a disordered bed, Coroner James Hanley announced that a post-mortem examination revealed she may have died from acute stomach trouble.

Bechtal confessed to police shortly after his arrest that he had choked the woman when she demanded \$20 from him.

NO HOME FUNDS TO BE REQUESTED

Commissioners Ignore State Recommendations.

Disregarding recommendations of the board of State charities, that improvements be made on the new Detention Home, 225 E. Michigan St., county commissioners will not ask the council for remodeling appropriations, it was said today.

A list of business to be taken up at the meeting, March 25, shows that the Detention Home is not to be considered.

The list consists of requests for minor appropriations and \$50,000 Sunnyside Tuberculosis Sanatorium. The home was leased from James M. Davis through James F. Edwards, councilman and real estate man, for \$350 a month. Council has appropriated \$325 a month for rental.

The State fire marshal's office and the charities board demanded that commissioners make improvements costing more than \$1,000.

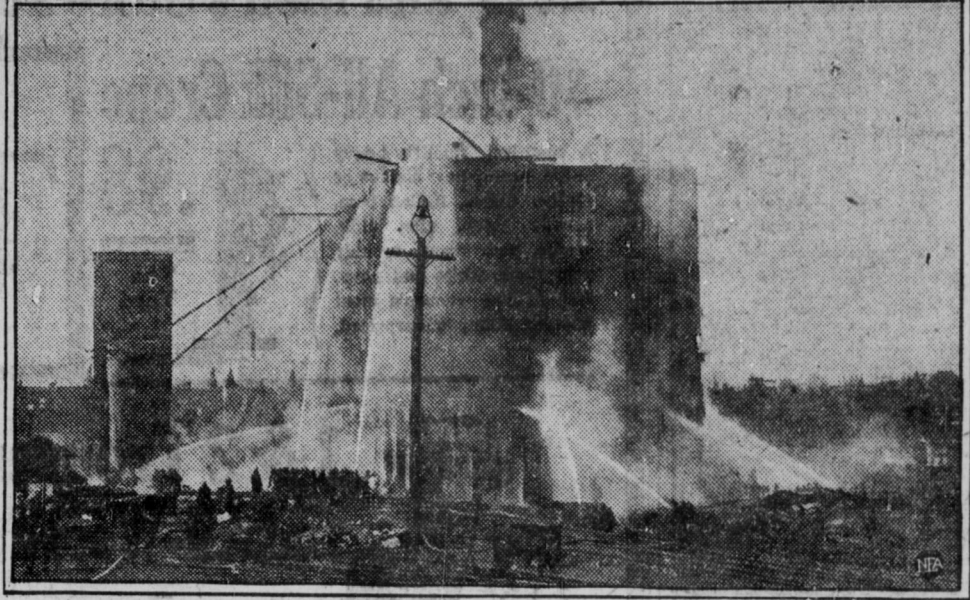
At present no children are being committed to the home by Juvenile Judge Frank J. Lahr.

Move to Make State Fair 'Safe and Sober'

Hip pocket liquor law violators are to be more than ever taboed at the 1927 Indiana State Fair. Gambling also will be barred.

This was the decision of the fair board Thursday when it ruled that Secretary E. J. Barker employ a detective to watch for law violations. The board decided to continue its

Spectacular Burning of Elevator



One of Philadelphia's most spectacular fires of recent years was the burning of this grain elevator. Neighboring residents were driven from their homes by the menace of the blaze, railroad traffic was disrupted by hose across the tracks, \$200,000 damage was done, and the flames, at times rising hundreds of feet could be seen from many sections of the city.

one-week program of Grand Circuit racing.

The Thursday meeting considered plans for a new poultry building to cost \$70,000 and Red Cross and baby buildings to be erected at a combined cost of not more than \$15,000. The Legislature appropriated \$80,000 for new buildings.

MRS. CHAPIN DEFEATED

By United Press CHESTNUT HILL, Mass., March 17.—Mrs. George W. Wightman, Boston, many times holder of the national title, today won her way into the quarter-final round of the national women's indoor tennis singles by defeating Mrs. A. H. Chapin, Jr., Springfield, 6-3, 4-6, 6-4.

Miss Edith Sigourney, Boston, also entered the quarter finals by disposing of Miss M. Morrill, Dedham, in straight sets, 6-1, 6-0.

When You Feel a Cold Coming On Take Laxative BROMO QUININE Tablets to work off the cold and to fortify the system against an attack of Grip or Influenza. A Safe and Proven Remedy. The box bears signature of E. W. Grove, Inc.—Advertisement.

NANKING NEAR CAPTURE

Cantonese Push Attack on City—Shanghai Endangered.

By United Press SHANGHAI, March 18.—Capture of Nanking by the Cantonese was reported imminent today after the fall of Wukiang and Ishing to the Nationalists.

Northern forces defending Nanking prepared to make a desperate stand in that city, capture of which would make the already perilous position of Shanghai still more critical.

DELAY STUDY OF CITY'S BRIDGES

Chamber Group May Take Up Survey Next Week.

Pending the return of Chairman William Fortune and William Book, director, the Chamber of Commerce civic affairs committee today is delaying consideration of the "bridge breach," according to John F. White, vice chairman.

"The situation has been alarming," White declared. "Fortune did not indicate that a committee meeting would be called during his absence, but I presume we will take up the local bridge situation at a meeting on his return."

Complaints have been received on the condition of the W. New York St. bridge and the Indiana Ave. structure. Both will be considered by the committee, White said, in addition to the College Ave. span which sank last week, and the Fall Creek bridge at Central Ave., which engineers reported undermined.

Fortune and Book are scheduled to return next week.

ADMITS MAIL ROBBERY

Man Held at Brooklyn—Officials Find No Record of Case.

By United Press BROOKLYN, March 18.—Police today held a confessed mail robber, Fred Buhl Jr., 24, said he and five companions held up a Chicago & Alton train at Alton, Ill., Aug. 23, 1923, and escaped with \$300,000.

Postal inspectors here had no record of such a robbery and newspaper files yielded no information on it. Chicago police were asked to check up on the reported hold-up.

The Diamond Sensation of the Season!

GENUINE DIAMOND RINGS for

GENUINE FULL CUT DIAMOND, SET IN BEAUTIFUL 18-KT. SOLID WHITE GOLD FILIGREE MOUNTING.

\$15.00 Allowed in Trade at Any Time on Purchase of a Larger Diamond

Just Think of It!—Only a Penny for a Diamond

HERE'S THE PLAN:

—Every purchase you make of \$17.50 or more entitles you to one of these Beautiful Diamond Rings for only **ONE CENT EXTRA.**

—Here is a bona-fide offer by a store whose honesty and integrity is beyond reproach, having served the public for over sixteen years. This offer is made solely to acquaint hundreds of new friends with Rite's Easy Payment Plan.

None Sold for Cash! Only One to a Customer!

YOU DON'T NEED CASH AT RITE'S

PAY ONLY 50c DOWN AND 50c A WEEK!

MEN'S STRAP WATCH

This fully guaranteed jeweled lever can be had in a variety of snappy green or white gold filled cases. The hands and figures are luminous to show time in the dark.

\$17.95

PAY 50c A WEEK!

LADY'S WRIST WATCH

A ladies' jeweled lever in the popular rectangular design fully guaranteed in every respect. The cases are white gold filled and handsomely engraved.

\$18.45

PAY 50c A WEEK!

Gent's DIAMOND RING

These beautiful rings represent the last word in diamond values. The stones are full of fire and lustre, and you can choose either a white, green or yellow gold mounting to suit yourself.

\$34.95

PAY 50c A WEEK!

Wm. Rogers & Sons SILVERPLATE

A 26-piece set of life-time guaranteed hollow handle silverplate, complete with utility tray.

\$23.25

PAY 50c A WEEK!

REMEMBER, ONLY 1c EXTRA FOR A BEAUTIFUL DIAMOND RING

With Every Purchase of \$17.50 or More

OPTICAL DEPT.

Your eyes examined by Dr. Beebe, our registered Optometrist, FREE OF CHARGE. Glasses supplied on our regular easy payment plan.

RITE'S

SQUARE-DEAL JEWELRY SHOP

43-45 SOUTH ILLINOIS ST.

Open Saturday Evening Until 9 o'Clock

FREE

We will gladly polish as new your watch, ring or any other article of jewelry regardless where purchased FREE OF CHARGE while you wait.

March

When you think of a garden think of Everitt's Seed Store

Fresh vegetables and beautiful flowers all the time and the enjoyment and health that comes from interesting work in the open. They may be yours, all of them, if you plant our new, guaranteed seeds.

This Week's Reminders of What to Plant

VEGETABLE SEEDS We mention for planting this month. Plant in heat now and then ground as soon as fit. Beets, Brussels Sprouts, Cabbage, Carrots, Cauliflower, Egg Plant, Kohlrabi, Lettuce, Peppers, Radish, Tomato, etc.	QUICK GROWING LAWN SEED For Sunny Lawns—Special one week—Lb., 40c; 5 lb., \$1.10 For Shady Lawns—We are making a new mixture this year that will stand in real heavy shade. It contains expensive imported grasses. Special one week—Lb., 40c; 5 lb., \$1.10 White Dutch Clover, Lb., 60c Blue Grass, Lb., 50c	NASTURTIUMS Giant flowered, dwarf and tall, named and mixed colors. No finer varieties and colors in the country than we have. See special offers below.	SEED POTATOES All the early kinds. Plant them early. Cover 6 inches deep and you will have certain to raise a good crop.
FLOWER SEEDS Sweet Peas, Nasturtiums, Hardy Perennials seeds and plants, Gladiolus and Camassia; start in house and transplant later for early display.	POTTED HYACINTHS They are now budding or blooming. Grab them now at our unusually low price. Enjoy their period of bloom in the country than we have. See special offers below.	ROSE BUSHES We have the largest collection of the finest varieties ever brought to this city. We have them in 2-year field grown, 1-year house grown, and most of them are shown in colors in our catalogue. Prices from 35c to 60c.	Baby Chicks A-1 Quality SPECIAL! A beautiful lot of Lights at 10c, \$1.20 doz. 110 hundred; Heavies, prices reduced. Starting feed given to purchasers of 10 chicks. Also booking orders for future delivery.
THE LAWN This is the time of all times to renovate the old lawn and make your new lawn just as quickly as you can have the ground ready for quick growing lawn seed. We have for sunny lawns and shady, and fertilizers and lime.	SPRAYS This is the time. We have every kind and the sprayers to apply them. Mr. Zimmerman can tell you what you want to know about spraying.	FRUIT TREES and VINES Plant them as early as you can. Our stocks are complete and comprise best varieties of apple, cherry and plum trees, berry plants, grape vines, etc. See in our catalogue page 63 about the wonderful new plants, such as Winstar.	BIRDS and Everything for BIRDS Bird seed, 2 lb. 5c, 5 lb. 10c. Box cases and accessories. We carry a splendid line of cages from \$1.75 up. Cage stands, \$3.50 up. Gold lab. dog food, etc.
ONION SETS Plant early—eat them early. Red and yellow, lb. 15c; 2 lb. 25c. Eggplant, yellow, per lb., 50c.	FERTILIZERS Gardens and lawns must be fed. We carry the best grades of fertilizers—bone meal, sheep manure, Smith's "Saco" brand, acid phosphate, nitrate of soda, lime plaster, etc. Ask our Mr. Zimmerman about Best Multi, the grandest thing you can put on your lawn or in your garden.	SWEET PEAS and NASTURTIUMS SPECIAL Plant Sweet Peas. Plant them now. 8 Named varieties, of giant flowered Spencer. All 8 the beautiful colors described in our catalogue. Regular price, 10c; 5 lb. 50c. Special price this week, 7c; 5 lb. 35c. 1 lb. 10c. Everitt's Superior Mixture of Spencers complete all colors. 1/4 lb. 35c; 5 lb. 15c; 10 lb. 30c.	NAMED VARIETIES NASTURTIUMS —Tall, pkt., 5c; 1 lb. 15c. Dwarf, pkt., 5c; 5 lb. 15c; 10 lb. 30c.
SPIREA VAN HOUTTEI in Bloom You can soon see this wonderful shrub blooming in a multitude of white, all over the city. We have sold it to thousands of Indiana home owners, and the demand constantly increases. Everybody admires it when in bloom and it is attractive the whole summer through.	THE VERY BEST NAMED KINDS —Each, 12c; doz., \$1.25; 25 for \$2.25. MIXED CANNAS—10c. doz., 75c; per 100, \$4.00.	CANNAS How about getting Cannas now? Start them in pot or boxes and set them out about May 1. In this way you will gain six weeks of wonderful blooms.	

Get Our Catalog

TWO STORES—WE DELIVER IN CITY and Ship Everywhere

227 W. Wash. St. Tel. MA in 4740

Everitt's (K) Seed Store

5 N. Alabama St. Tel. LI ncain 4955