

CITY GROWS 3 PER CENT EVERY YEAR

Should Reach 1,000,000 in
34 Years, Says Fletcher
American President.

Indianapolis is growing at the rate of 3 per cent annually in population and, if this rate is maintained, will have a population of 1,000,000 in thirty-four years.

This statement was made today, following the opening of Indianapolis' fifth annual Home Complete Exposition at the State fairground, by George C. Forrester, Fletcher American Company president. Forrester said the statistics were obtained from the Indiana University Business Reserve Bureau.

Forrester said a general survey of twenty-five representative cities show it takes a city about thirty-five years to grow from a population of 250,000 to 1,000,000.

Only Four Cities Ahead

"Only four cities have shown an increase in population as great as Indianapolis," he declared. "These are Detroit, Cleveland, Los Angeles and Rochester, N. Y."

Wage earnings and their increase in Indianapolis are among the points which make this city a better place in which to reside, it was pointed out. "There are only three cities in the representative group that show a faster increase of wage earning than Indianapolis," Forrester stated. "These are Portland, Los Angeles and Detroit. Out of the twenty-five largest cities in the country only five have a lower tax burden per capita than Indianapolis."

Bank Deposits Increase

Bank deposits in eighteen of the largest banks here increased 19 per cent in 1925 over 1924. Post office receipts have increased 13 per cent in these two years, he said.

"Building permits have continued at a level in excess of \$25,000,000 annually," Forrester pointed out. In 1925 the total was \$26,674,000. The first two months of this year showed a 24 per cent increase over the like months of last year. Building permits in 1925 showed an increase of 240 per cent in value over those of 1914.

"It is possible to estimate the population of Indianapolis this year with measurable accuracy. The population is now 375,000. This means that the population has increased since 1920, at an undiminished rate of 3 per cent a year."

If the rate continues the population will increase 11,250 during the year.

"Indianapolis has 2,500 more homes occupied now than a year ago," Forrester said. "There also are 1,044 more offices and places of business in operation now."

SALE OF SOUTH SIDE TRACT TO START APRIL 15

Canby Place Name of New
Addition Containing 345
Home Sites.

With the announcement of the opening soon of Canby Place, 65-acre tract of ground, south of English Ave., between Keystone Ave. and Rural St., the old Canby farm, long offering resistance to the encroaching demands of the city, passes into oblivion. This tract, originally a Union States land grant in 1838 to a man named Canby, has been a part of the Joson and Noble estates, owners for nearly a century.

The new subdivision, containing 345 home sites, was probably the largest remaining unimproved tract of ground close to the heart of Indianapolis, being but a few minutes' ride from the downtown district on the Prospect or English cars. By automobile the addition is easily reached over Southeastern and Keystone Aves.

To the stranger coming suddenly upon Canby Place, its acreage presents the appearance of a suburban addition transplanted within the limits of the city. While embodying many of the desirable advantages of a suburban tract, the addition has none of the disadvantages, as modern conveniences are at hand. The scores of lots bordering on English and Keystone Aves. have all the municipal improvements, while the lots in the interior have easy access to the same.

The new Pleasant Run Blvd. passes through the southern part of the tract. Schools and churches are in the immediate vicinity. According to L. P. Davis, formerly with the real estate department of the Fletcher Savings and Trust Company, in charge of developing the tract, such building restrictions will be imposed so as to insure the construction of attractive, well-built homes. Davis will start the sale of lots April 15. The Meyer-Kiser Bank will act as trustee and collection agent.

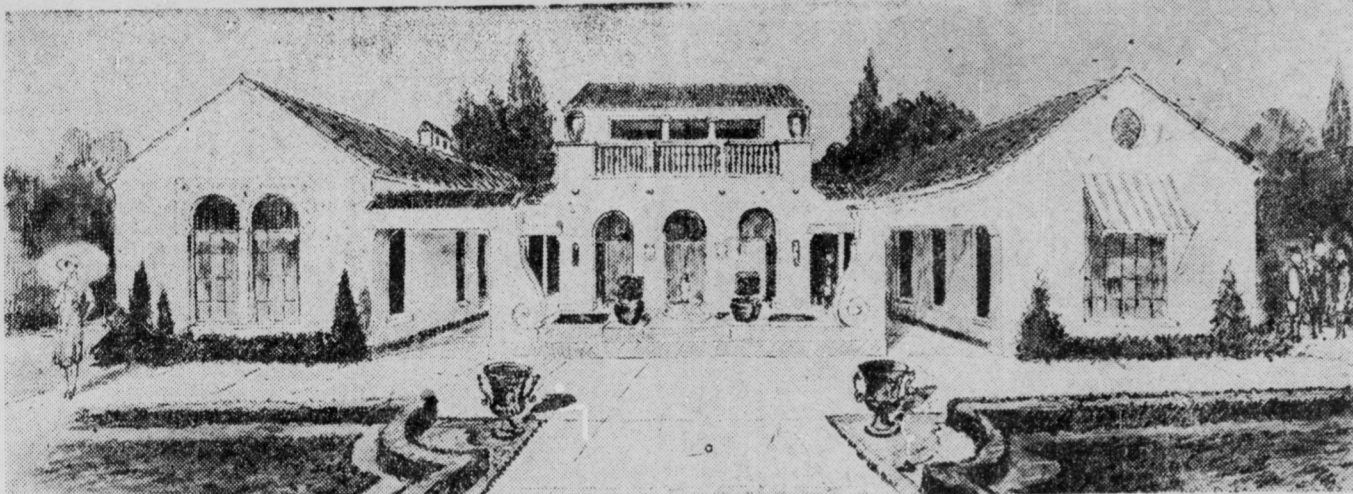
PRODUCTS MADE IN CITY SHOWN

Ideal Furnace Company Has
Display.

For the first time two Indianapolis products are on display at the Home Complete Exposition by the Ideal Furnace Company.

The products are a new smoke consumer and an electric heater. The company's plant is at 1624 Southeastern Ave. Officers of the company are E. M. Spackman, president; A. C. Michael, vice president; Glenn McConnell, secretary, and Joseph Cathcart, treasurer.

Model Home Is Centerpiece of Exposition



Mediterranean type bungalow, centerpiece of the Home Complete Exposition.

Nestled in the center of the Manufacturers' Bldg. at the Indiana State fairground is the model home of the Home Complete Exposition, erected by the R. H. Shelhorn Company. It is a Medi-

terranean type bungalow finished in multi-colored stucco. It is "U" shaped, and with its colored roof, neatly landscaped gardens and flagstone patio, it rests luxuriously in the center of activity.

The bungalow contains five rooms and bath and the interior of the walls also are stucco-finished. Between the wings of the house is a patio elevated about

a foot above the tile walks which follow the sides of the structure. The patio is laid with flagstones and in the center is a small fountain.

MANY EXHIBITS ARE AFFORDED VISITORS

156 Local and Foreign Firms Participate in Annual Affair
at State Fairground.

The Home Complete Exposition exhibitor reveals a wide range of exhibits than ever before afforded Indianapolis show visitors. One hundred fifty-six firms have booth at the exposition. They include:

A. B. C. Oil Burner Company, 2245 N. Meridian St.; Allied Coal and Material Company, 14 W. Ohio St.; American Tent and Awning Company, 834 S. East St.; Architects' Small House Service Bureau, 151 E. Market St.; Ayres Ventilator Company, East Chicago, Ind.; Artcraft Furniture Studios, 1553 N. Meridian St.; L. S. Ayres Company, E. Washington St.; Baner Furniture Company, 233 S. Meridian St.; W. H. Bass Photo Company, 208 S. New Jersey St.; L. H. Beach Company, 1412 Merchants building; Benjamin Electric Company, Chicago, Ill.; Bethard Wall Paper Company, 415 Massachusetts Ave.; Bird & Son, Chicago, Ill.; Brackett-Monarch Company, 514 Guaranty building; Brightman, 239 W. Thirty-Ninth St.; New York City; A. R. Caldwell Company, 206 S. Capitol Ave.; Burnett-Burford Lumber Company, 1401 W. Thirtieth St.; J. F. Cantwell Company, 830 Lemcke building; Carmel-Burcave-Moore, Inc., 540 N. Meridian St.; Central Wall Paper Company, 127 S. Meridian St.; Century Heating Service Company, 36 W. Tenth St.; Chamberlain Metal Weather Strip Company, 424 S. East St.; Chaffield Manufacturing Company, Cincinnati, Ohio; Christensen-Peacock Piano Company, 237 N. Pennsylvania St.; Citizens Gas Company, Maltese building; city plan commission, city hall; Crandall-Donnell Corporation, 325 N. Pennsylvania St.; Davis Roofing and Supply Company, 2334 Alford St.; Decatur Pump Company, 1412 Merchants Bank Bldg.; De Walt Products Company, Leola, Pa.; Draper Metal Weather Strip Company, 2315 N. New Jersey; Du Pont Paint Company, Chicago, Ill.; Dury Pump and Manufacturing Company, Dayton, Ohio; Edison Electric Company, Inc., 115-117 S. Ohio St.; William Evers Company, 1628 S. Ohio St.; Electric Air Circulating Heater Company, 312 S. Jones; Elmstedt Asphalt Company, 91 E. Home-Mansur Bldg.; Ernest Garmory Hygienic Toilettes, 405 American Central Life; The Estates Sales Company, 34 S. Meridian St.; Ever Ready Heater Company, 117 W. Washington; Everett's Seed Store, 227 W. Washington; Fawcett & Leach, Dubuque, Iowa; Flaxmin Insulating Company, S. Paul; Mini-Fletcher Ave. Savings and Loan, 10 E. Market St.; S. Foster; Fox Furnace Company, 40 S. Capitol; Goleider's, 140 E. Washington St.; Good Homekeeping, 1324 N. Capitol; Hamilton, 1324 N. Capitol; Charles L. Hartman, 317 E. Washington St.; Home Complete Exposition, 127 S. Meridian St.; C. W. Hitchcock, 902 E. Wayne Ave.; Holland Furnace Company, 604 Massachusetts Ave.; Home Furniture Company, 301 E. Washington St.; Hooper Tile and Sile Company, Albany; Hoover Company, 503 Merchants Bank Bldg.; Hoyt Hope & Son; Hubbard-Seaver Lumber Company, P. O. Box 125, Hydrus, Ind.; Ideal Furnace Company, 1624 Southeastern Ave.; Indiana Bell Telephone Company, 250 S. Meridian St.; Indiana Paint Rite and Sump Company, 132 S. Pennsylvania St.; Indianapolis Delco Company, 1007 N. Meridian; Indianapolis Electric Supply Company, 123 S. Meridian St.; Indianapolis Life Insurance Company, Meridian at Thirtieth St.; Indianapolis Light and Power Company, 48 Monument Circle; Indianapolis Paint and Color Company, 124 S. Illinois; Indianapolis Real Estate Board, 817 Lemcke building; Indianapolis Stucco Company, 2650 E. C. & W.; Indianapolis Water Company, 113 Monument Circle; W. H. Johnson & Sons Co., 320 E. St.; Joe St. R. Johnson Paint Company, 135 S. E. Tenth St.; Kerner Incinerator Company, Milwaukee, Wis.; "Kitchen Maid" Cabinets, Andrews, Ind.; Kierulff Lumber Company, Duluth, Minn.; Lewis Cement Block Company, 920 E. Fourteenth St.; W. P. Long & Co., 124 E. Ohio St.; Lyman Brothers, 223 E. Ohio St.; McDonald Company, Frankfort, Ind.; James H. Makin, 232 E. Sixty-Third St.; Marvel Gas Company, 124 S. Illinois; May State Lumber Washington Machine Company, Newton, Iowa; Merchants Heat and Light Company, Washington and Meridian Sts.; Minneapolis Heat Regulator Company, Minneapolis, Minn.; Modern Appliance Corporation, 34 S. Pennsylvania St.; Murphy Door Bed Company, Chicago, Ill.; "9000" Electric Sign Company, 210 N. Alabama St.; Neve's & Co., 600 E. C. & W. building; The New Method Store Company, Mansfield, Ohio; Northwestern Steel and Iron Works, 33 S. Dearborn St.; Chicago; Ollar Furnace Company, 231 Massachusetts Ave.; Oliver Oil Burner, 225 N. Pennsylvania St.; Old-Matic Company, 124 E. Ohio St.; Palme Lumber Company, Chicago, Ill.; P. & A. Dispatch, 206 Reece building; Patterson Shade Company, 28-30 S. Meridian St.; Pearson Piano Company, 128 N. Pennsylvania St.; Peeries Foundry Company, 1855 Ludlow Ave.; Perfection Water System Company, 125 W. Maryland St.; Pettis Dry Goods Company, E. Washington St.; Photo-Craft Studios, 1549 S. Madison St.; Pierson-Lewis Hardware Co., 111 E. Vermont St.; Pittsburgh Heater Company, Maltese

Publicity Head Is Active



Henley T. Hottel

Secretary of the exposition committee of the Indianapolis Real Estate Board, presenting the Home Complete Exposition at the State fairground, is Henley T. Hottel, head of the real estate department of the real estate board. Hottel is publicity chairman.

See Our Exhibit, Home Complete Show Williams Oil-O-Matic Burner

We have sold this Burner here for 5 years. Hundreds in use. Not a single failure. We have a payment plan, \$50.00 down, balance in monthly payments.

Also see the Lammert & Mann Burner, for commercial use. No building too large. Oldest on the market. Home Incinerator and Permanent Water Softener.

W. D. LONG CO.

124 East Ohio—Lin. 7110

Smoke Consuming Device on NEW IDEAL FURNACE



to be shown first time at
HOME COMPLETE

Help to make your city clean, and save money on your coal bill, 10 to 30% savings on any soft coal. This furnace has 30 feet less joints in the Warm Air Chamber than other makes, besides other improvements, and costs you no more than ordinary furnaces.

See the NEW IDEAL and get our prices before buying. We repair all makes of furnaces. Estimates free.

Ideal Furnace Company

DR exel 4176—DR exel 1139.

1624 Southeastern Ave.

WINDOW SASH DEVICE SHOWN

Invention of Local Men on
Market Here.

New device for operating windows without use of sash cord and weights, known as the Hoosier Sash Holder, is being shown at the fifth Home Complete Exposition. It was recently invented by F. Howard Stowell, civil engineer, and Herman H. Glick, a physician, both of Indianapolis.

The Hoosier Sash Holder Company of this city is manufacturing the device and the George W. Fife Equipment Company, Merchants Bank Bldg., is the Indiana distributor.

Windows are held securely in any position by the sash holder. The holder is invisible after the window is placed in the frame. With the use of the holder windows can not rattle and break and the elimination of cords and weights is one of the valuable features of the invention.

Successful demonstrations of the sash holders have been made in residences, apartments, hotels, hospitals and offices buildings throughout the country.

IS NOT PROMOTIONAL

"The Home Complete Exposition, according to Director J. F. Cantwell, is not a promotional enterprise further than to foster and develop the desire for home ownership. For those who own their homes already, many new appliances and homey things of great interest, calculated to improve the home, are exhibited.

ELECTRICITY ESSENTIAL

Merchants Heat and Light Company
Has Complete Display.

Every phase of "electrical house-keeping" is shown at the booth of the Merchants Heat and Light Company at the Home Complete Exposition for the purpose of impressing visitors with the idea that electricity is indispensable in the modern home. The front section of the company's display is arranged as a living-room, in which different types of lights and lighting arrangements are shown. Other parts of the exhibit stress all forms of electrically operated devices ranging from frons, vacuum cleaners, stoves to refrigerators and washing machines.

Complete Interior Decoration And Furnishing Of the Mediterranean Home By L. S. Ayres & Co.

HOME BUILDING

Is Our Business and Our Hobby

We not only try to earn a living at it, but we make a great deal of effort, and take a great deal of pride in building every home we build a solid, well built, convenient and attractive place to live. These points and our satisfied customers have been the cause of our business increasing very rapidly and we can give you an approximate price or perhaps a definite price on what you want.

Would It Not Be wise

To confer with us on your new home?
To compare our work with others you may see?
To compare our prices with others you may get?
From our photographs and plans you can readily select an approximate design, and we can very soon give you an approximate price or perhaps a definite price on what you want.

If You Want a Home North

We have several very choice lots ranging in price from \$1,500 to \$5,000 on which we will build to suit you. We built some twenty-five homes in this section last year we can refer you to for inspection.

If You Want a Home South

We have twenty-five lots facing Pleasant Run Boulevard and on Pennsylvania and Delaware streets just north of Pleasant Run Boulevard on which we will build to suit you. We are now building ten houses on Pennsylvania street just north of the Boulevard that will range in price from \$4,000 to \$7,000.

If You Are Interested in a Home West

We are just finishing fifteen four and five-room modern homes directly across from and facing Rhodius Park. The most beautiful location in West Indianapolis. These homes are being offered at \$4,250 and \$4,750 on easy terms.

If You Would Like a Suburban Home

We have a tract of land five miles north of Blackville on the Lafayette Pike. Lots in this tract are 100x200, and all face east on the paved road. The bus line on this road furnishes convenient transportation. We will build to suit purchaser on these lots.

If You Already Own a Lot

Of course, we will build anywhere to suit you, and can arrange terms if you desire.

Why Not Come to Our Office

and get acquainted, and talk the matter over. Or a telephone call will bring a salesman who can show you plans and pictures, and quote you prices.

Bridges & Graves Company

227 North Delaware Street.

CI role 7808.

BOOSTS HOME EXHIBIT

The photograph message of the Merchants Heat and Light Company.

Daylight Corner, for this week is:

"A visit to the Home Complete Exposition—a panoramic display devoted to the home—will benefit every

citizen. A stimulant to home-making. A powerful force for civic betterment. Manufacturers building, fairground, April 10 to 17. J. F. Cantwell, director."

The Home is NOT complete unless—

the pantry is stocked with
the pure, fresh, high quality
food products of the Fish-
back line.

The FISHBACK Co.
Indianapolis

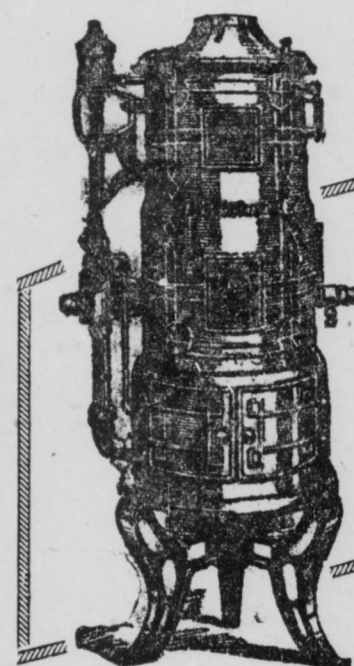
There Will Be a Display of

Pittsburg Automatic Water Heaters

At The Home Complete Show

(Exhibit No. 14 and 15)

Where one of our experts will gladly consult and advise you regarding your individual requirements as well as the exceptional advantages and conveniences embodied in this modern home appliance.



Try It At Our
Expense

Thirty Days
Free Trial

If after that time it does not meet with
your entire satisfaction and approval the
heater will be removed without any cost to
you.

Sold On
Monthly Payments

Do not be deceived by exaggerated statements
about the economy of low-priced heaters.
We shall be pleased to make true comparisons
for you with absolutely no obligation on your
part.

In This Same Exhibit You Will See

Kleenburn Cinerator

Combination Kitchen Refuse
and Rubbish Burner

The More Sanitary Way for Homes

Cremates one bushel of garbage,
refuse, etc., into one pint of
pure, powdery ash in 30 minutes.

A Size and Style for EVERY Requirement

The Convenient
and Sanitary Way



The KLEENBURN Way
Costs so little and does so much

When You Visit Our Exhibit See the

Smooth Top, New Process and Roper Gas Ranges Radiantfire Gas Heaters

Exhibit 14 and 15

Citizens Gas Co.

45-49 S. Penn. St.

MAIn 2541