

COLORS IN VOGUE FOR SPRING WEAR

Checks and Stripes Popular With Man of Fashion—
Male Follows Trend of Feminine Fashions.

By Rader Winget
Bright hues are the "thing" for early spring wear for the local man of fashion, Indianapolis style setters have decided. Checks and stripes will abound in his attire and colors are pronounced, but not clashing, outfitters said.
He is wearing loud but pleasing attire of the latest cut and weave. His ties rival the flaming plumage of the flamingo. But, strange to say, he is not offensive to the eye, but rather pleasing.
His shirt has lost the old "Pinstripe Wall" effect and is striped and checked with blue and brown and the pastel shades.
The color dash has spread even to his hose and (pardon the familiarity) to his garters. Socks are made in stripes and checks of blending color. And of course, are of the finest silk but really inexpensive, even for the

average man who wishes to be well dressed.
And garters!!! They are made in harmonizing colors of blue, black and red. The man can allow his color complex to run riot here as with his suspenders.
A year ago the male of the species would have been horrified at the mention of loud shades.
But today the dark blue or brown business suit with quiet ties, black socks and white kerchief are less common. The man, probably without knowing it, has followed the trend of the feminine fashions and has completely changed. He has come out of his cocoon and like the silk worm has blossomed forth as Solomon in all his glory.
But a real danger lurks in man's new-found freedom. With a great variety to choose from and with everyone else indulging, he is liable to go a little too far in the matter of color.

Everyone knows the bad taste of wearing a light gray suit and a purple tie. But because they are ill matched is no reason one should avoid purple ties and light gray suits. Only the combination should be avoided.
With a light gray suit one could wear a tie with a gray background and small figures or any one of the million ties designed with a gray background.
Many suits are being made with designs, and numbers of designed ties are on display. But woe to the man who selects a suit with a check and a tie with the same pronounced check. The effect will be to create a clash that cannot be overcome with careful selection of other accessories.
Rather the man should select a conservative suit with a striking tie

Music Will Feature Program Tonight



Erwin W. Muhlenbruch

Everything is set for another fine musical program over WFIM, Merchants' Heat and Light Company station tonight at 8:30 when The Indianapolis Times broadcasts its regular Friday night program.
The orchestral part of the program made up of request numbers received at the studio.
The Times will introduce a novelty in the way of a pianologue. The artist will be Erwin W. Muhlenbruch, pianist, of this city.
J. F. Cantwell, representing the Home Complete Exposition will speak a few minutes.
A Baldwin Grand will be used in all musical numbers.

to put the necessary dash of color to his costume, or an outstanding suit with a conservatively made cravat.
A charming combination in good taste is a shirt with a plaid design and a tie with a diagonal stripe. If the color scheme of the shirt is brown then the tie should have a brown background.

ECHO MAKES APPOINTMENTS

Staff Members for School
Paper Are Given.

New appointments for the Shortridge High School Echo staff have just been announced, the chief change being the naming of Russell Townsend as editor of Monday's Echo to succeed Herbert Sundrinski, resigned.
New members of Monday's staff: Russell Townsend, editor; assistant, Eric Holms; Helen Jacobs, Charlotte Walker, Burton McCormack, Frieda Gellman and Virginia Perkins.
Tuesday's staff: Lucille Wade, editor; assistant, George Dicks; William Otto, Helen Wilson, Dorothy Lambert, Susan Ann Shedd, Bertha Corb, Norris Houghton, Helen McCor, Lillian Scholten, Thelma Porter, Dorothy Squires, Kathleen Vermilion, Mary Alice Schell, Elizabeth Savidge, Alice Baker, Emily Pond, Mignelle Cochrane, Carol Mayborn, Ruth King, Harriette Perkins, Norma Davidson, Eva Marie Simpson, Nellie Stecken, Thurman

Ridge, Margaret Harris and Robert Ketch, Thursday's staff: Maxa Brownlee, editor; assistant, Harry Bailey, Willard Smith, Marjorie Brownlee, Virginia Edgewood, Norman Ferguson, Grace Yager, Milford Miller, Richard Huggins, Tom Kelly, Charles Linebeck, Betty Jean Davis and Robert Ventham.
Friday's staff: Mary Ann O'Brien, editor; assistant, Collier Young, Louise Cox, Hilda Carroll, Helen Frown, Edward Wilson, Jean Duthie, Tom Carroll, William Moore, Marjorie Edgewood, Lois Thatcher, Ruth Bonfield, Eberhart Blatt, Thomas Woodard, Fred Darnell and Maxine Gardner.

HERE'S STYLE TIP
LONDON—The distinction of having the most curious hat in London has been awarded Miss Frances Knowles-Foster, who wears an As-trankhan hat made for a Swedish army officer.

INCOME TAX IN STATE FAVORED

Questionnaire Sent Candidates by Farm Bureau.

Passage at the next Legislature session of an income tax law will be sought actively by Indiana Farm Bureau Federation leaders.
All candidates for the Legislature

have been asked to reply to a questionnaire sent from federation headquarters Thursday. Bureau county leaders will meet here April 20 to discuss returns.
Federation leaders issued the following statement:
"In view of the fact that in Indiana the agricultural population, 31 per cent of the whole, receives but 8 to 12 per cent of the State's income, and pays from 25 to 33 per cent of the State's taxes, the Indiana Farm Bureau Federation is advocating a State income tax policy."

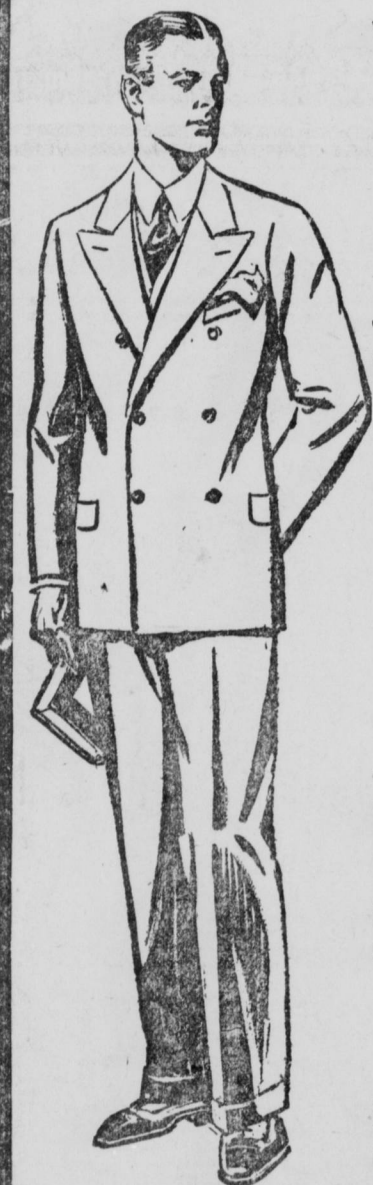
Biliousness and constipation come from a weak stomach You can help Nature end this trouble

If your Stomach and Liver are weak, your food is not digested. This causes food to be held up in your body. The usual result is constipation, which causes headache and severe gas pains. For 53 years, people have sensibly corrected this condition by using Chamberlain's Tablets for the Stomach and Liver. They help the digestive organs stop chronic constipation. Get Chamberlain's Tablets today at any Drug Store, only 25c.

SATURDAY Clothing Sale

350 Two-Trouser SUITS

In a Big One-Day Sale



Values Up to
\$25.00
Two-Trouser
Suits
Saturday Sale
\$16.95

Values Up to
\$30.00
All-Wool Serges
All-Wool Cassimeres
Double Breasted
Single Breasted
Two-Trouser
Suits
Saturday Sale
\$19.85

Values Up to
\$35.00
Extra Fine Serges
Fine All-Wool Worsteds
Fine Cassimeres
Double or
Single Breasted
Saturday Sale
2
Trousers **\$24.50**
Included

Men's Cravenetted Gaberdines

Latest Models **\$14.95** \$20.00 Values

TOP COAT SALE

Silk lined, made of fine all-wool fabrics. **\$16.95**
Usual \$25 value, Saturday's Sale....

Gives 'Em Values

E. J. Frymson's
43 West
Washington St.

W. H. Bartlett Co.

21 NORTH ILLINOIS ST.

Tomorrow at 8:30 A. M.
A Sale of Nearly
Two Hundred Pretty

DRESSES

Formerly Priced Up to \$49.75

\$9.90

MATERIALS
Satin Crepes
Georgettes
Prints Laces

Sizes for Juniors,
Misses, Women
and the large
woman.

Styles Include
Evening Gowns
Sport Dresses
Afternoon Dresses
Dinner Dresses
Business Dresses
And Many Others

If Values could talk
They would say

Dartley Underwear
INC. and Hosiery
are Best!

COME IN AND SEE
Our Big
Selection!

W. H. Bartlett Co.—21 N. Illinois St.

Lovely Silk
CHEMISE
\$2.98
Reg. \$3.98
Heavy crepe de chine silk and
glove silk.
In the Season's Most
Wanted Pastel Shades.
Imported
Voile **98c**
Chemise
Saturday at 8:30. A Sale!
PURE SILK THREAD
CHIFFON HOSE
\$1.00
All
Perfect
Fashioned
to Fit
3 Pairs
\$2.75

W. H. Bartlett Co.
21 NORTH ILLINOIS ST.

W. H. Bartlett Co.

21 NORTH ILLINOIS ST.

Tomorrow at 8:30 A. M.
Handsome Spring

COATS

\$25

The most remarkable values
ever shown by this store—
made possible by the purchase
from a manufacturer
whose stocks had been
affected by the backward season.

You will be astounded by the
beauty, style and charm of
these coats. See them without
fail—tomorrow!

MATERIALS
Charmeens
Poiret Sheens
Lustrous Silks
Novelty Weaves
Poiret Twills
Imp. Tweeds
Voguish Plaids
Smooth Satins
All the Newest
Spring Shades

Misses' Sizes,
14 to 20
Women's
Sizes,
34 to 46