

STATE IS URGED TO GROW TREES FOR CHRISTMAS

Forester Asserts Indiana Can Make Profit on Waste Land.

Indiana should grow her own Christmas trees, according to Charles C. Deam, state forester. This can be done with profit, in view of the large area of wasteland now available, and the present retail prices of the shipped product, Deam declared.

Trees best suited for the holiday now are gathered in Maine, Vermont, Canada, Michigan and Minnesota, and due to the quarantine of some areas, ravages of insect pests and

high freight rates prices have advanced nearly 30 per cent this year.

Trees Most Suitable

According to Deam, trees most suitable for Christmas are Norway spruce, white spruce, balsam fir and Douglas fir, with preference being given the Norway spruce. The Norway spruce lends itself admirably to Indiana soil and climate.

It grows best on a fairly deep, well drained, porous soil with a fair amount of moisture. Planted on sand and foliage tends to become yellowish, but a greenish color may be restored by top dressing the soil with manure.

In starting a plantation, strong transplants are best, with four-year-old transplants six to twelve inches high preferable. They should be planted with a regular spacing of four feet by four feet, requiring 2,720 trees per acre. Spring is the best time to plant.

Occasional cultivation for two years after planting is advisable, after which the trees will care for themselves admirably. After seven

years, trees will have an average height over five feet and are ready for market.

Estimating that these trees would be raised on land unsuited for agriculture, Deam says it is both possible and financially practical for Indiana to grow its own Christmas trees, because at the end of seven years when trees could be marketed, it is possible to realize several hundred dollars an acre off land which otherwise probably would be idle.

Cultivate Occasionally

"On the basis of four-year-old transplants costing \$20 a thousand, \$54.40 worth of trees are necessary an acre. Add a delivery charge of \$65. Land preparation and planting costs should not exceed \$30 an acre. Allow nothing for cultivation—as this should be done in spare time. Figure a loss of 10 per cent of the trees. Allow 6 per cent compound interest on the money invested. If the trees are harvested at the end of seven years and sold at 30 cents a tree, this shows a total profit of \$591.52 for one acre for seven

years, taxes and land rent not accounted for.

EARLY MAILING URGED

Postal Employees Send Message Over Air From WFBM.

In radio messages broadcast from Merchants Heat and Light Company's station, WFBM, this week the Seventh Indiana District Joint Association of Postal Employees presented an appeal for the public to aid in handling the Christmas mail rush. The messages, in part, follow:

"The Postoffice Department has planned all the details of moving the great mass of mail promptly, and we pledge you that we will do everything humanly possible to

carry out these plans. As the department has decreed there will be no deliveries on Christmas day, may we urge upon you to mail early. Parcels for Indiana should be mailed

not later than Saturday, Dec. 19, and for city delivery not later than Monday, Dec. 21, and we guarantee that these parcels will be delivered before Christmas."

CHANGE IN BUS SCHEDULE INDIANAPOLIS—LOUISVILLE

and Intermediate Points

EFFECTIVE SUNDAY, DECEMBER 20, 1925

For Further Information Call

T. J. Gore, Jr. Tkt. Agent, Main 4500

INTERSTATE PUBLIC SERVICE COMPANY

FEET HURT?
FREE Picture Made
Dr. Scholl Expert Here
Corrects Foot Troubles.
Correct Shoes Fitted.
1546 N. Illinois St.

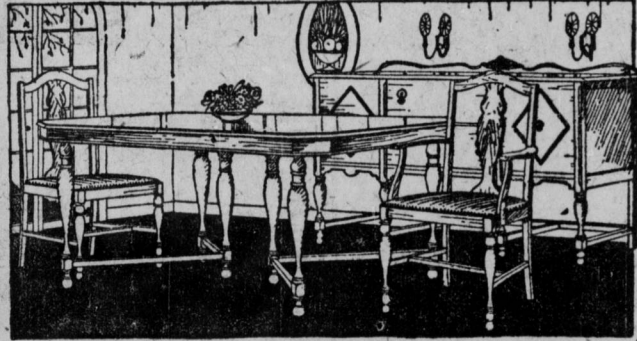
THE VICTOR FURNITURE CO.—"The Store That Satisfies"



Let Credit Solve Your Gift Problem



Plenty of Extra Salespeople—Quick, Courteous, Individual Service—No Waiting—No Delay



8-Piece Walnut Finish Dining Room Suite — \$99.⁸⁵

A wonderful creation done in walnut. Chairs with beautiful blue leather seats. You must see it. Special at

This 3-Piece Metal Bed Outfit

Consisting of Bed, Spring and Cotton Mattress (Complete)

Rarely, indeed, can you secure complete bed outfit of this quality at anywhere near so low.

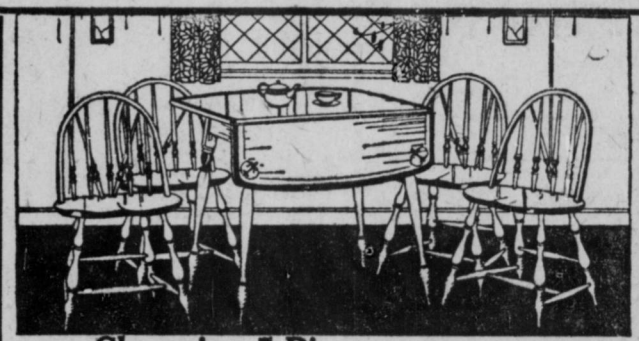


\$18.⁹⁵

Easy Terms

A Wonderful Gift

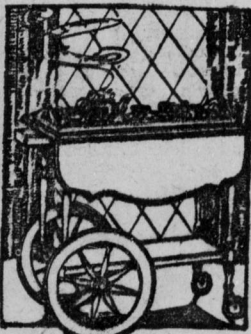
There's a full size metal bed, resilient spring and comfortable cotton mattress, all for the low price of... **\$18.95**



Charming 5-Piece Breakfast Sets

\$14.⁸⁵

—These sets come unfinished; paint them any color combination you like. Special at Finished Breakfast Sets, \$28.85 and up.



Tea Wagons

A particularly appreciated gift which adds a graceful touch in the home. Specially priced for Christmas buyers.

\$12.⁹⁵

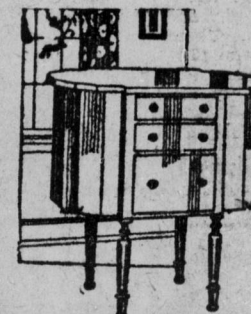
Only \$1 a Week



Bassinettes

A brand new bassinette where he or she can grow away many happy hours. It is finished in ivory, crimp-link springs.

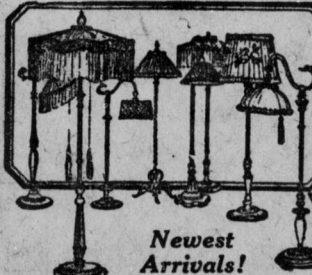
\$4.⁹⁵



Martha Washington Sewing Cabinets

Three roomy drawers and two large compartments for mother's sewing materials. A popular design, useful and attractive, both.

\$11.⁹⁵



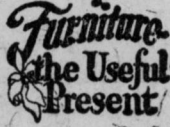
Newest Arrivals!

A Brilliant Array of Floor Lamps

Complete with attractively trimmed silk shades, stand, plug and wire.

\$12.⁸⁵

Only \$1.00 a Week

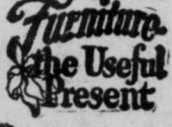


Fine All-Steel Scooters

All steel except handles; disc wheels; rubber tires.

\$1.²⁴

Built to stand the knocks. No phone or C. O. D. orders.



Chifforobes

With low prices like this prevailing on chifforobes, you can make a substantial gift which will last for years, in place of the kind that give only temporary satisfaction.

\$22.⁸⁵

Only \$1 a Week

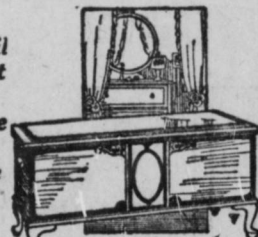


Cedar Chests

Unusually good looking cedar chests, with exterior in rich walnut finish. Queen Anne period design.

\$19.⁸⁵

Don't Fail to Inspect Our Complete Line of Genuine Cedar Chests



Here's a Most Acceptable Gift



Automobiles

Snappy new models. Various makes. Special at

\$6.⁹⁵



Coaster Wagons

Boys will have a world of fun with these. Specially priced at.

\$4.³⁵

Dollie Trunks

Large Size. Every little girl wants one. Specially priced to-morrow at

98c



All-Steel Piano

In pretty mahogany finish. Fine tone; practically indestructible. Special at

\$1.⁹⁸

Shoo-Fly

Strongly built and prettily painted. Only a limited number at

\$1.⁵⁹



Large Mama Dolls

20 inches high. Taken from our highest priced line. All are neatly dressed. While they last

98c

Doll Sulkies

Sturdy little sulkies in splendid assortment. Special at

\$1.⁹⁸



Doll Carriages

Can you imagine the joy a doll carriage will bring. These are dandies. Special at

\$3.⁵⁰

3-Piece Child's Table and Chair Sets

Every little child wants one of these sets. Prettily finished. While they last

\$4.⁴⁸



Child's Large Desks and Chairs

How proud the little folks will feel when they get their feet under these desks. Special at

\$9.⁸⁵

See Our Windows for Many Other Suggestions

Everything Delivered in Time for Xmas



Bridge Lamps

greatest lamp value in the city.

Polychrome wrought iron stands and beautiful shades complete. The

\$5.⁹⁵

This Fine All-White KITCHEN TABLE

With the 26-40-inch porcelain top and drawer here is an extraordinary value we are featuring. You'll want it when you see it.

\$6.⁴⁵

Only 50c a Week



A Real Gift!

Store Open Saturday Night

Remember every value exactly as represented. TERMS arranged to suit your convenience.

Open Your Account TOMORROW

VICTOR FURNITURE CO.
237 WEST WASHINGTON STREET

Open Your Account TOMORROW

Store Open Saturday Night

In the Shopping District—Just 1½ blocks west of Illinois St. on Washington Street.

A. COOPER ANDREWS

Holiday Neckwear

\$1.⁵⁰ — \$2.⁰⁰ — \$2.⁵⁰

AND MORE

Fancy French Linen Handkerchiefs for "His Breast Pocket" that match splendidly with our fine neckwear.

Mufflers Tuxedo Vests Lisle and Wool Hose
Velvet Lounge Robes Golf Hose Tuxedo Sets
Dent's Gloves Walking Sticks Gift Certificates

Custom Shirts Handsomely Tailored Tuxedo
By Suits; Overcoats, Business Suits,
Mr. Emil Steinhilber for immediate delivery.

A. Cooper Andrews

GENTLEMEN'S FINE CLOTHES

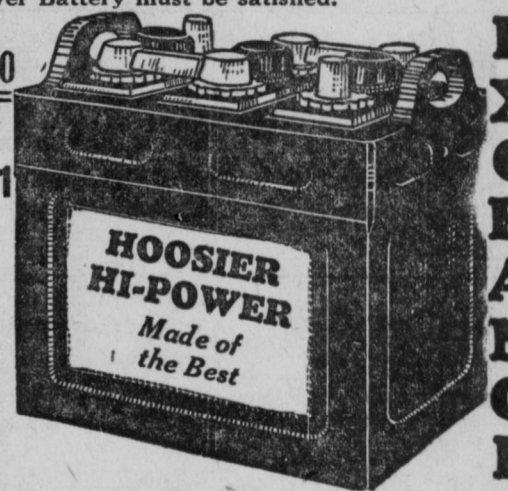
Suite 209 Continental Bank Building.

BATTERIES!

OUR POLICY—Every customer purchasing a Hoosier Hi-Power Battery must be satisfied.

\$9.⁵⁰

6-11



EXCHANGE

INDIANA WHOLESALE TIRE CO.

201 N. Capitol Ave. CI 6942

SAVE 25% ON YOUR WOHLFELD FUR COAT
437 Occidental Bldg.

This Optical Gift Certificate



Will Solve Your Xmas Problem
The Gift of a Pair of Good GLASSES
to Those Near and Dear to You

is always appreciated. Many will present the above certificate Christmas morn, and one of our registered optometrists will make the examination and fit correct glasses when presented after Christmas.

AT \$7.50

This Certificate Entitles You to a Pair of Jaffe Zylo Shell Spectacles

shown here (or your choice of two other frame styles), made to your individual measure complete with best quality toric lenses ground precisely for you. Jaffe examination and guarantee included.



Have Your Eyes Examined Without Charge or Obligation
2 Stores Conveniently Located

Jaffe & Sons
OPTOMETRISTS

HAROLD JAFFE 133 N. PENN. ST. Ground Floor Denison Hotel
BERT JAFFE 7 N. ILLINOIS ST. Opposite Claypool Hotel
Two Stores Owned and Operated Separately Under the Same Name