

POSTAL BOOST FAILS TO MEET PAY INCREASES

So Another Jump in Rates Is
Discussed as
Remedy.

Times Washington Bureau.
1322 New York Avenue.
WASHINGTON, Dec. 18.—Congress is about to do some more work on the postal rates, and a further increase in rates is in prospect. The Senate recently authorized continuation of the postal rate committee headed by Senator Moses of New Hampshire, until the beginning of the next session, to work out further rate changes.

This committee worked out increases in rates which were put into effect early this year, to give postal employees an increase in pay. The recent annual report of Postmaster General New showed a deficit of \$49,453,000. New said the department paid out \$32,297,000 increased salaries during the year, and that without these increases the deficit would have been about \$17,000,000.

Cost \$70,860,000

It is estimated, he said, that the increased salaries will cost the department \$70,860,000 during the present year, and the raises in rates will increase revenues only about \$32,200,000, or less than half enough to meet the salary raises.

When Moses asked consideration of his resolution, he was greeted with a generous "razzing" both from members of his own party and Dem-

STATE PARKS POPULAR

Many Hunters Stop at Hotels During Season, Reports Show.

Reports reaching the State conservation department show that State parks, during the current hunting season, have become popular rendezvous for the great army of hunters afield.

Hundreds of hunters chose State park hotels during the season as stopping places and the patronage was boosted as a result.

ocrats, who charged that the increase in salaries was purely political and was promised to aid the reelection of President Coolidge and that the increases now in effect are unscientific, hasty and a burden to business.

Politics, Says Norris

"This increase of postage was placed on the American people without any consideration worthy of the name, and was really a bill to relieve the president of veto message in regard to salary increases, and it had to be done because of the election," said Senator Norris of Nebraska.

"We have already legislated and now we are going to investigate and see if we ought to have fixed the increases as we fixed them."

Moses pointed out that the election was already past when rates were increased and salaries raised, but Norris retorted that the promise was made before election.

Both Senator Norris and Senator Swanson of Virginia said that the present rates are destroying business. Complaints of them have been received from many interests, they said.

THE NEW IDEA in Electric Washers

Guaranteed by us and The Boss Washing Machine Co. makers since 1889 of the time-tried Boss Electric Washer, Water-power and other Washers.

The Boss THERMO washer is built on the same heat-retaining principle as the Thermos bottle. Triple walls enclose a sealed, insulated air space. This construction keeps the water hot throughout the washing period, thereby greatly multiplying the cleansing action of the soap and safeguarding health.

It eliminates the necessity of boiling clothes! No other washer has this big advantage! Many additional points of superiority.

BOSS THERMO
ELECTRIC WASHER

\$1 Down Reserves One for Christmas Delivery
Demonstrated and Sold on Easy Terms by

The "1900" Electric Specialties Co.

MA in 1900 219 N. Alabama St. MA in 1900
Fournace Hardware Co. 139 W. 16th St. Hyland Hardware Co. 2869 Clifton St.
Home Outfitters Co. 2329 Station St. Langdon Brothers 3832 E. Washington St.
Virginia Ave. Electric Shop 1012 Virginia Ave.

The J. F. Wild & Co. Christmas Club Plans

Fifteen Plans for Saving Easily and Safely

PLAN A—SECURES \$12.75.
First deposit \$5, increasing 1c each week for 50 weeks, last deposit 50c.

PLAN B—SECURES \$25.50.
First deposit \$2, increasing 2c each week for 50 weeks, last deposit \$1.00.

PLAN C—SECURES \$38.25.
First deposit 5c, increasing 5c each week for 50 weeks, last deposit \$2.50.

PLAN D—SECURES \$51.00.
First deposit 10c, increasing 10c each week for 50 weeks, last deposit \$5.00.

PLAN E—SECURES \$63.75.
First deposit 50c, decreasing 1c each week for 50 weeks, last deposit 1c.

PLAN F—SECURES \$76.50.
First deposit \$1.00, decreasing 2c each week for 50 weeks, last deposit 2c.

PLAN G—SECURES \$89.25.
First deposit \$2.50, decreasing 5c each week for 50 weeks, last deposit 5c.

PLAN H—SECURES \$127.50.
First deposit \$5, decreasing 10c each week for 50 weeks, last deposit 10c.

PLAN I—SECURES \$156.25.
Deposit 25c each week for 50 weeks.

PLAN J—SECURES \$200.00.
Deposit 50c each week for 50 weeks.

PLAN K—SECURES \$250.00.
Deposit \$1.00 each week for 50 weeks.

PLAN L—SECURES \$300.00.
Deposit \$1.50 each week for 50 weeks.

PLAN M—SECURES \$350.00.
Deposit \$2.00 each week for 50 weeks.

PLAN N—SECURES \$400.00.
Deposit \$2.50 each week for 50 weeks.

PLAN O—SECURES \$450.00.
Deposit \$3.00 each week for 50 weeks.

PLAN P—SECURES \$500.00.
Deposit \$3.50 each week for 50 weeks.

You will receive a check at the end of the club period for all you have paid in, with interest added at

4%

Select Your Plan and Join Today!

The J. F. Wild & Co.
STATE BANK

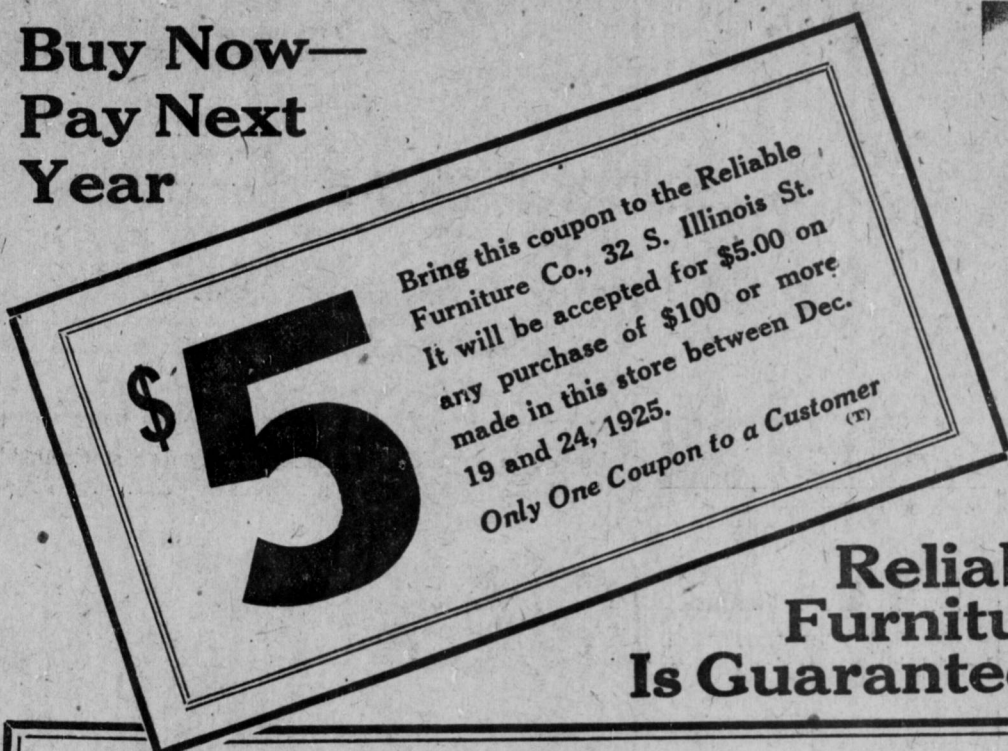
123 EAST MARKET STREET, INDIANAPOLIS

Open All Day Saturday Until 8 P. M.

Use This COUPON!

It Will Save You Money on Gifts!

Buy Now—
Pay Next
Year



Reliable
Furniture
Is Guaranteed!

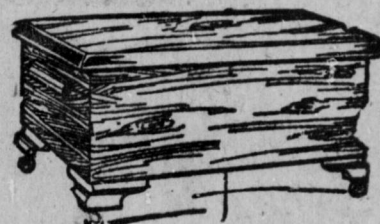
FLOOR LAMPS and KITCHEN CABINETS Given Away!



With any purchase of \$150 or more Saturday a beautiful floor lamp. With any purchase of \$250 or more a kitchen cabinet without extra cost.



In Addition to The Coupon



Cedar Chests \$8.95
36 Inches Long

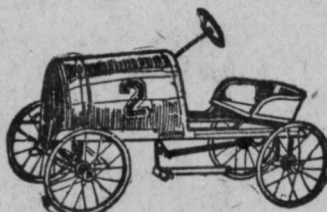


COASTER WAGONS \$3.95

Automobiles

Reduced in Price! As Low as

\$4.95



Smoking Cabinet

\$3.25



Smoking Stand

89c



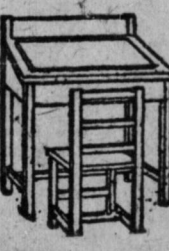
Smoking Stand

\$1.59



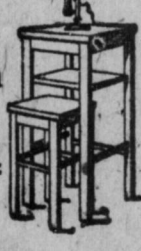
DESK AND CHAIR

\$2.98



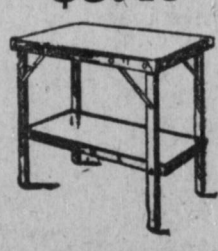
Telephone Stand and Bench

\$3.95

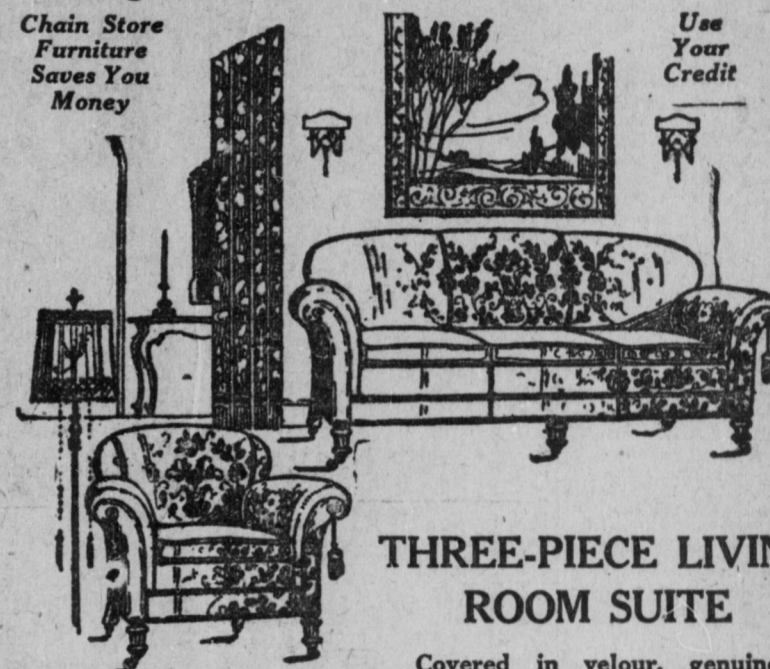


RADIO TABLE

\$3.49



Chain Store Furniture Saves You Money



THREE-PIECE LIVING ROOM SUITE

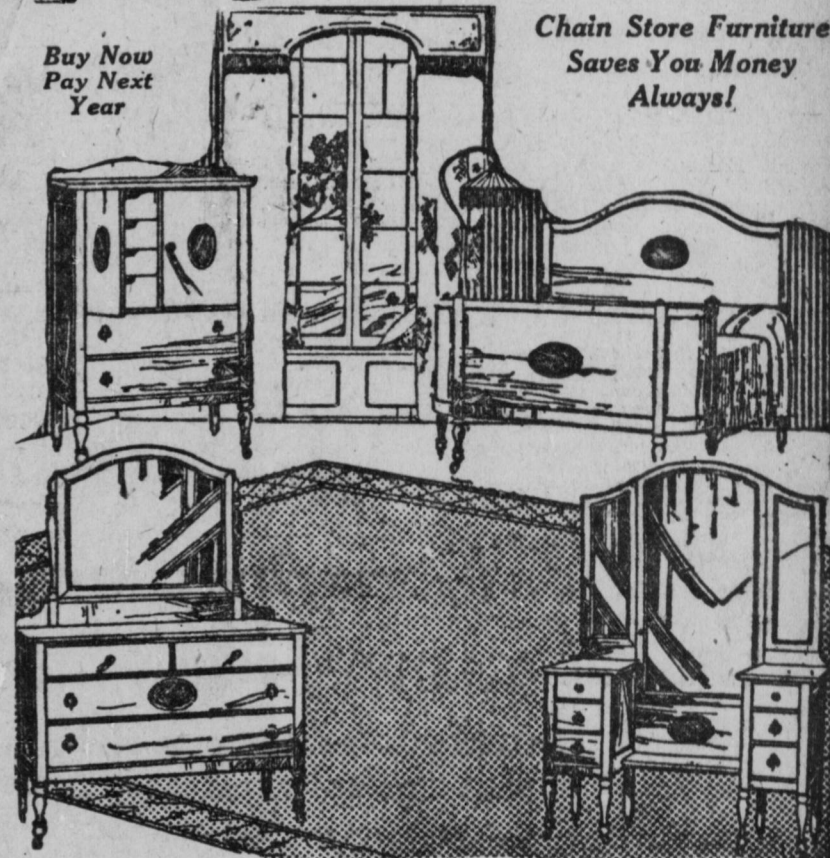
Covered in velour, genuine Marshall spring construction, with wing fireside chair as shown—Special!

\$129.75



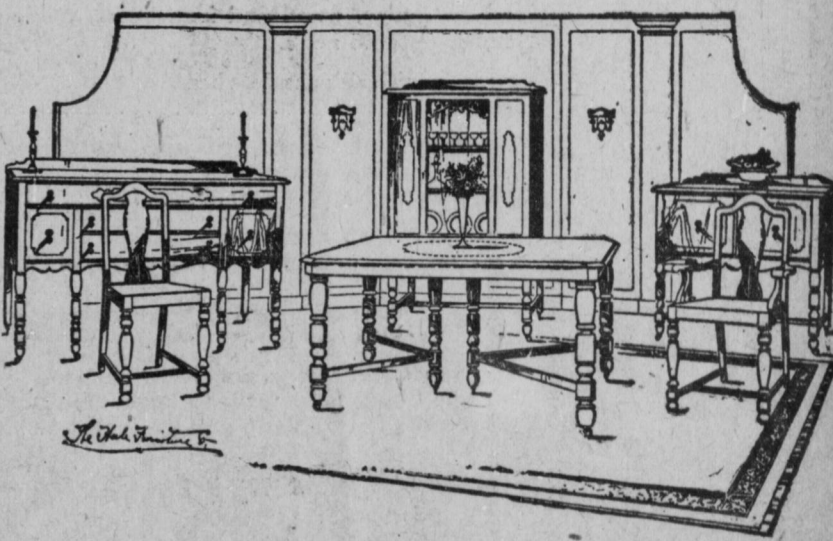
Buy Now Pay Next Year

Chain Store Furniture Saves You Money Always!



4-Piece BED ROOM SUITE

Full vanity, large dresser, bow-end bed, chifferobe—all in genuine walnut veneer. . . . \$139



8-Piece DINING ROOM SUITE

Table, buffet and six chairs, covered in tapestry. An amazing value. . . . \$109.50

China Closet and Server Extra

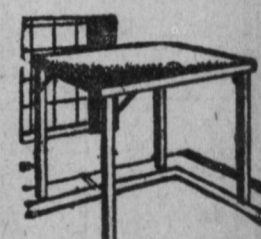


Mirrors Special

98c

RELIABLE FURNITURE CO.

32 - 34 - 36 South Illinois St.



Card Tables

\$1.59