

NEW MOTOR TO BE ON DISPLAY

Factory May Be Established in City.

The first five-cylinder valveless automobile motor in the world will be displayed in Indianapolis by its designer, D. E. Willis, Chicago, Thursday and Friday at the Meridian garage, it was announced today by the Chamber of Commerce.

If sufficient interest is displayed, it is more than possible that a plant will be established here, officials say, as it is understood that Willis is seeking a central location for his plant.

The five-cylinder valveless motor is the result of a nine-year development career, during his engineering career, has been associated with Packard and Chalmers and gained distinction for his aeronautical contributions.

BUTLER DAY AT CLUB

Dr. Robert J. Aley, president of Butler University, will speak at the noon luncheon of the Advertising Club Thursday on the subject "Does a College Education Help a Business Man." The day has been set aside by the club as "Butler day" and the board of trustees, officials and faculty members will be guests.

Freedom From Stomach Distress

Indianapolis Druggists Have the Remedy and Guarantee it to End Indigestion or Gastritis. So Why Be Miserable?

You can get one bottle of Dare's Mentha Pepsin and if after you take it you do not say it did your stomach more good than anything you ever used before, your money will be waiting for you.

This delightful and effective elixir not only gives instant relief from gas, fullness, acid stomach and distress after eating, but taken regularly for a short time will turn your weak, run down stomach into a strong, healthy one able to perform its duties without help.

It ends indigestion, gastritis, catarrh of the stomach and does it in a surprisingly short period of time. Dr. Wm. W. Morgan, a prominent dentist of Bridgeton, N. J., writes: "After suffering severely with gastritis and other stomach troubles, a friend gave me a bottle of Dare's Mentha Pepsin. I had obtained little relief from other remedies, but four bottles entirely ended the trouble." For sale by Harg Drug Co., Hook's Dependable Drug Stores, Goldsmith's Cat Price Drug Stores.—Advertisement.

Robertson's

Indiana's Best Known Music House
Shop Here — Save Money
235 N. Pennsylvania St.

White Furniture Co.

Tom Quinn Jake Wolf
Better Furniture — Lowest Prices — Personal Service
243-245-247-249 W. Washington St.

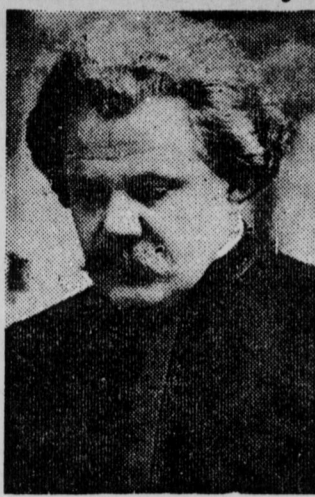
Roofless Plates



The splendid appreciation shown by the vast number of people for whom we have constructed roofless plates is indeed highly gratifying to us. The most enthusiastic are those who have discarded their old style plates. No more gagging or sick stomach. Perfect taste and speech. No rocking, sagging, easily kept clean. It's the last word in artificial teeth.

Eiteljorg & Moore
Corner East Market and Circle
Few Steps From Circle Theater

Here Saturday



Bohumir Kryl

Known as one of the best band directors before the public today and is an international cornetist of ability, Bohumir Kryl will direct his band through two concerts at Cade Tabernacle next Saturday afternoon and night.

LIST OF G. O. P. IS CHALLENGED

Clauer Says One Committeeman Supports Myers.

William E. Clauer, Democratic city chairman, charged today that Dr. Edmund D. Clark, who was included in the published list of executive committee members in charge of the campaign of John L. Duvall, Republican nominee for mayor, is supporting Walter Myers, Democratic candidate.

Dr. Clark told Clauer use of his name by the Republicans was unauthorized, Clauer said.

Although the Fourth ward is the largest in Indianapolis, it is protected by only four policemen, of whom only two are on duty at one time, Myers told an audience at Fortieth St. and Capitol Ave. Tuesday night.

The police are equipped with automobiles, Myers said.

LINTON TO TESTIFY

By UNITED PRESS
GREENCASTLE, Ind., Oct. 14.—Blackie Linton, convicted bank bandit today was to testify against William Evans, charged with robbery of the Spencer, Ind., banks last November.

Building Permits

B. A. Burkhardt, garage, 275 N. Randolph, \$2,500.
Frank Lyons, garage, 1517 N. Alabama, \$3,750.
M. O'Haver, remodel, 3009 Kenwood, \$500.
Norman Kote, roof, 1009 E. Raymond, \$200.
W. Schowe, furnace, 321 Layman, \$200.
Brown Realty Company, remodel, 9 Kenwood, \$200.
W. J. Baker, furnace, 956 N. Oakland, \$350.
Curran Trabue, dwelling, 1322 S. Key-stone, \$3,000.
F. Morrison, garage, 3038 Buckle, \$250.
East Side Church of God, church, 2201 Argenta, \$2,200.
D. Yeazell, roof, 2030 N. Talbott, \$200.
E. E. Dean, furnace, 3902 E. Washington, \$380.
E. E. Dean, basement, 3902 E. Washington, \$200.
Guto Kuehmann, room, 824 River, \$250.
Mrs. Harry Manuel, furnace, 2977 Highland, \$200.
Linnie Culler, dwelling, 2213 Beecher, \$300.
Guy Arnold, dwelling, 719 E. Fifty-Fourth, \$4,000.
Guy Arnold, furnace, 719 E. Fifty-Fourth, \$200.
Eugenia Hoffert, addition, 1345 S. Meridian, \$1,700.
O. R. Newman, dwelling repairs, 1030 Teoma, \$200.
Louise Lang, furnace, 2140 S. East, \$450.
J. J. Jarvis, furnace, 22 N. Wallace, \$468.
Harry Baker, addition, 631 Woodlawn, \$225.
E. E. Campbell, garage, 405 S. Butler, \$350.
E. E. Campbell, dwelling, 2017 S. Pennsylvania, \$3,000.
William Cobb, garage, 1430 E. Fifth, \$200.
Martha McKay, dwelling, 2205 Roosevelt, \$250.
Martha McKay, furnace, 2205 Roosevelt, \$200.
Martha McKay, dwelling, 2019 Roosevelt, \$300.
Martha McKay, furnace, 2019 Roosevelt, \$200.
Martha McKay, dwelling, 2201 Roosevelt, \$250.
Martha McKay, furnace, 2201 Roosevelt, \$200.
Martha McKay, remodel, 4500 Broadway, \$2,000.
Far Johnson, dwelling, 5606 Guilford, \$4,700.
Brooklyn Brick Company, shed, Twenty-Fifth and Monon, \$400.
J. C. Woodruff, remodel, 226 E. Ray-mond, \$1,700.
Guy Strickler, addition, 321 S. Hamilton, \$200.
Guy Strickler, addition, 321 S. Hamilton, \$200.
Russell Calkins, dwelling, 830 N. Denny, \$4,350.
V. Johnson, garage, 1142 S. Randolph, \$200.

WOODWORK TODAY COMPOSITE THING

Many Past Fashions Are Combined in Finishing of Modern Home—Different Woods May Be Used With Good Effect.

By Molly Elliott

Woodwork in the interiors of American home these days is a sort of composite of the "authentic" modes of a wide range of past fashions which have served as models. Much as they tend to the general character of the house, they have been evolved into a sort of glorified American pioneer and degenerated old world style.

American snooping about among the ancient buildings of great beauty in their old-world settings with the natural mellowness of time about them feel with their innate responses to beauty, that they might pick off the ideas and make them theirs in their American homes. A close study of the evolution of the characteristics of woodwork from the Seventeenth century to the Nineteenth, of which we see traces in nearly all interiors today, shows a slow transition from the Gothic gradually into the English Georgian influence which produced the fine old wood-lined rooms as seen in Virginia homes of the generation just past.

Wood on Walls

Wood paneled walls, doors, stair rails and balusters were often made of native walnut or rare mahogany and plastered walls were in use as early as the first of the Eighteenth century. Wall paper, however, brought in with the English vogue, Chinese inspired, was superseded by the low wainscoting with plaster above to provide for wallpaper.

Today the mode is to pay particular attention to window and door frames and obtain the desired effect with painted work. The spiral stairway—a French inspired fashion, which was much used in the early Nineteenth is singularly suited to the modern home. It is unfortunately expensive to construct and when not well designed is unspeakably depressing and offensive. A satisfactory way to handle the stair without loss of dignity is to carry it up between two walls, starting under an archway at the bottom. This eliminates the balusters and woodwork at the tread ends which, if not well done had better not be done at all.

Long Sun Room

Through lovely plastered archways from the hall may be seen the long sun room with rows of long French doors on three sides. At both ends of the living room are also long doors with plate glass panes. Opposite the sun room is the fireplace which is distinguishingly different in that it is built with soft green tile hearth and frame about the opening without a mantel and gracefully tapers toward the ceiling. A second door at the left of the fireplace leads to the right and entrance to the kitchen and an exit to the driveway at the back and closets and down stairs lavatory opening off the hall-way opposite the long sweeping stairway with beautifully curving baluster.

Many Features

In the construction of interior work there are a number of features which require attention. The old method of the expert woodcraftsman who spent many weeks upon the big house making each feature of the woodwork fit into the owner's plan, room by room, has nearly passed out. For much expert millwork may be obtained already prepared if handled by reliable carpenters. There is a wide choice in woods oak, chestnut, walnut, butternut, cherry, maple, gum, redwood, and pine for natural finishes and for painted work; birch, poplar, white and yellow pine, the latter being used considerably in the Southern States.

Many tragedies in woodwork have been due to the careless placing on damp plaster walls. The dampness is absorbed and then the wood is dried too rapidly when heat is brought into the house. As an initial protection against dampness, woodwork should be "primed" or painted a first coat of lead and oil at the mill, on the back only, if for a natural finish; and on all sides if for a painted finish, and then should not be sent to the new house until the plaster is bone dry. Then, when the woodwork arrives at the house and is being installed, constant attention should be given the control of the supply of heat in the radiators, and sudden changes and excessive temperatures avoided.

With woodwork, as in nearly all fields where design and workmanship are involved, design and execution are far more important than quantity and elaboration. A moderate amount of thoughtfully designed interior trim will always outclass a larger quantity of carelessly planned work, poorly put together. One of the encouraging signs of the times is that manufacturers of stock woodwork have employed competent and skillful architects to design their trim, so that there is no longer any excuse for a house being built with woodwork in bad taste.

MANY BUY THEIR HOMES

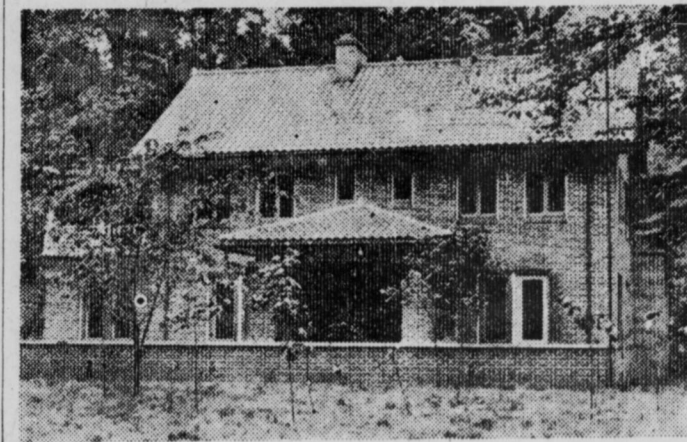
City Outskirts Inhabited by All Types of Owners.

No matter how small the beginning, the habit of owning a home cannot be started too early. The satisfaction it brings through the years is unequalled. Persons every day are proving this in their effort to own even the smallest type of home along the outskirts of the city.

HOME AIDS CHARACTER

A home, because of its friendliness, its sturdiness, its dependability in service, constantly acts to form strength in character, finer individuality, for all who dwell in it.

Perfect Details in New Home Give It An Air of Stateliness



Home of Mr. and Mrs. Tilden F. Greer

The perfect detail in which the new home of Mr. and Mrs. Tilden F. Greer, 4730 N. Capitol Ave., is arranged gives it an air of distinction of which few houses may boast. Built among the loveliest old trees of any locality in the city and finished in soft red brick with green tile roof and many artistically arranged windows the house stands graciously hospitable—truly a home to live in.

At one end of the long uncovered porch across the entire front of the house rounded steps lead up to the driveway. Two groups of long casement doors with plate glass windows open into the living room and dining room off the porch and in the center the main entrance door is beautifully designed with a grill door screened with copper netting giving the entrance an appearance of elegance and individuality.

The first floor is arranged around a center hall with the living room at the left and the dining room at the right and entrance to the kitchen and an exit to the driveway at the back and closets and down stairs lavatory opening off the hall-way opposite the long sweeping stairway with beautifully curving baluster.

Through lovely plastered archways from the hall may be seen the long sun room with rows of long French doors on three sides. At both ends of the living room are also long doors with plate glass panes. Opposite the sun room is the fireplace which is distinguishingly different in that it is built with soft green tile hearth and frame about the opening without a mantel and gracefully tapers toward the ceiling. A second door at the left of the fireplace leads to the right and entrance to the kitchen and an exit to the driveway at the back and closets and down stairs lavatory opening off the hall-way opposite the long sweeping stairway with beautifully curving baluster.

The dining room is lighted through long French doors with plate glass panes and opens directly into the kitchen. The kitchen is compactly arranged with its wall lined with cupboards and closets and a built-in cabinet, an incinerator, and a refrigerating system in the ice box. A door leads into a delivery vestibule with an outside entrance and one entrance to the basement and one into the two-car garage built onto the house.

The upstairs plan is such that each room is easily accessible from the other and the long center hall lined with solid doors of mahogany is as interesting with all the doors closed as with them open. A beautifully tiled bathroom at the front separates the one bedroom and the host's chamber. All manner of built-in effects are used and the same soft red brown of the mahogany woodwork is used in the band around the lower section of the wall. The master chamber has a beautiful small red brick fireplace with gas logs in one side and two lovely casement windows and two long doors opening onto the sunning porch in the other. At one end beneath two large casement windows are chests built-in and lined with cedar, and between them is a long plate glass mirror. On either side of this group of windows which is arranged in a sort of bay effect are two cupboards, each with a tier of shelves in one end.

The unique treatment of the doors and windows without side frames gives the entire house a quaint stateliness as do the lovely arches and the solid wood doors. Beautiful hardwood has been used in the floors and the lighting fixtures throughout the house are of lovely design. On either side of the fireplace in the living room are tall torcheres in antique effect. The dining room center light is of quaint Colonial design with many cut-glass pendants. The porch is lighted by a lovely old English wrought iron lamp. Every device has been employed to make the house ideally livable. Every care has been taken to carry out to the last degree the artistic home spirit that one feels upon approaching the curving driveway. The construction of this home was under the supervision of Alfred Waggoner, lumber and millwork were furnished by A. E. Van Natta Lumber Company; building materials by Spickelmier Fuel and Supply Company; hardwood floors by H. V. Cook Company; plumbing by the Bassett Company; screens by American Metal Weather Strip Company; A. B. C. Oil Burner by A. B. C. Oil Burner Company; Rybolt furnace by Rybolt Heating Company; and copper gutters by Joseph Gardner.

LUMBER FIRM ADOPTS SLOGAN

'Everything to Build a Home With' Is Motto.

The great advantage of being able to have a line on every bit of material that goes in to the new home can only be appreciated by those who have bought their supplies from the Speedway Lumber Company.

"Everything to build a home with" is the slogan of the company, and indeed they maintain that policy to the last degree. Practically everything that is used in the building of a house may be bought from this house and in so doing much time and opportunity for delay is eliminated.

Herbert E. Hill, president of the company, declares that no finer millwork can be found than that done by the Speedway Lumber Company and door and window sashes of finest quality to go into homes of superior are their specialty. Even high grade building hardware is included in their stock. Although they do not carry furnaces and lighting fixtures, they can practically assume the entire responsibility of the question of building materials for the home builder and contractor.

BLINDS ARE ATTRACTIVE

Cretone Window Shades Add to Beauty of Room.

The clever woman takes advantage of the mode of cretone window blinds and avoids that expense by replacing the old ones herself. They make charming bedroom decoration and are unquestionably good taste, lending themselves admirably to the general scheme of each room.

The clever woman takes advantage of the mode of cretone window blinds and avoids that expense by replacing the old ones herself. They make charming bedroom decoration and are unquestionably good taste, lending themselves admirably to the general scheme of each room.

BUY YOUR COAL NOW, SAYS FIRM

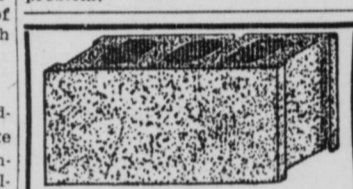
Company Warns Patrons Not Too Wait Too Long.

The old and worn precaution that a stitch in time avoids a lot of unnecessary swearing is patent at this time of year when the coal bugbear stares us in the face. Coal and building supplies have caprices that have caused so many disasters that no reliable concern dares make any promises about them. The best they can do is to deliver the goods until their supply is exhausted and then exert every known effort to avail themselves of a new supply and carry on.

This is what the People's Coal and Cement Company is doing for its customers. What they have in the yards at present is a full line of high grade coal and building material. This they offer with all the attending advantages of efficient service and competent employees at hand. As cold weather comes on their supply will be lessened, the corps of men and trucks will be taxed and they will work overtime to make deliveries. Now is the time to order and expect the very best cooperation from their well-stocked yards, they urge upon all their patrons.

OIL USED FOR HEATING

After the house is built it may still be utterly unsatisfactory if the heating plant is inadequate. Oil burners are rapidly making inroads into the heating field that promise to open a new era in the heating problem.



LEWIS QUALITY BLOCKS
Concrete Products, Porch Columns, Flower Boxes, Vases and Bird Baths
Daily Capacity 3,000 Blocks
TWO LARGE PLANTS
16th and Fall Creek MA in 4967

A 5-ROOM BUNGALOW
Built for \$3,650.00
For Ask Us About It
FINANCED ON MONTHLY PAYMENTS
CIVIC REALTY CO.
136 N. Delaware St. Room 104
Lincoln 5050.

We Will Build You a Home
You Can Pay Like Rent
FLOYD PETERMAN
500 Massachusetts Avenue
Main 7029. Irvington 2304.

GARAGES BUILT, EASY TERMS, \$1 TO \$5 PER MONTH.
L. G. BRIGHTMIRE CO.
1101 N. Capitol Ave.
Lin. 7810. Nights, Wash. 4890.

MEAD-BALCH CONSTRUCTION CO.
RAILROAD and BRIDGE CONTRACTORS
POSTAL STATION BLDG.

HEAT WITH OIL
A quiet, economical burner without complicated mechanism was desired for the residence of Mrs. Tilden F. Greer, so an A. B. C. was installed.

A. B. C. OIL BURNER CO.
DEMONSTRATED IN A HOME AT
2245 NORTH MERIDIAN
RA ndolph 4355. ASK OUR USERS

HARDWOOD FLOORS
In the home illustrated on this page manufactured, laid, finished by
H. V. COOK CO.
Manufacturers of Hardwood Flooring
2819 Roosevelt Ave. Webster 3100

THE PLUMBING
in the home shown on this page done by
THE BASSETT CO.
2033 E. Tenth St. WE bster 1419.

BUILDING BRICK
In the Home Shown on This Page Supplied by

Spickelmier Fuel and Supply Co.
105 South Denny
Irvington 3840

THE LUMBER AND MILLWORK
In the beautiful home built for Mrs. Tilden F. Greer on this page was furnished throughout by
A. E. VAN NATTA LUMBER CO.
2052 Northwestern Ave. RA ndolph 4000

Buy PLUMBING on the —Buschmann Payment Plan—

BUILDERS' HARDWARE AND BUILDING SPECIALTIES

In addition to a complete line of rough and finishing hardware, we represent such nationally known building specialties as Bird's Roofs, Murphy In-a-Door Beds and Flaxlinum Insulation material. Let us show you how to make your home more attractive, more comfortable and more complete.

VONNEGUT HARDWARE CO.
120-124 E. Wash. St.

BUY COAL NOW!

Peoples Coal & Cement Co.
Main Office 1109 E. 15th St.

Webster 4890, 4891, 4892, 4893, 4894

Connects you with Main Office and Yards
Our yards cover the city

"None Better Mill Work" SPEEDWAY LUMBER CO.

"EVERYTHING TO BUILD A HOME."
Our Truck Service Covers Marion County
Herbert E. Hill, President BEImont 2000

WILLIAMS OIL-O-MATIC BURNER
FOR ANY FURNACE OR BOILER—BURNS CHEAP OIL
OXO GAS BURNER FOR STOVES AND HEATERS
124 E. W.D. LONG & Co. 7110
OHIO ST. LINCOLN

H. C. Curry & Co., Mfrs.
WINDOW SHADES
1102 1/2 PROSPECT ST.
FOUNTAIN SQ. DR. 9195

WE HAVE MOVED
to 366 South Meridian Street
Three Doors South of Old Stand
MARION PAINT COMPANY

A Rybolt Furnace
in Your Home Insures Comfort and Convenience
REPAIRS for all Makes of Furnaces by Expert Mechanics.
632 Massachusetts Ave. Main 1282
Lincoln 2714

YOUR Home is more deserving of interior harmony. Make beautiful with New Mirrors, Pictures, Framing of Old Pictures or the resilvering of your mirrors. Call us today. Lincoln 2254.

LYMAN BROTHERS
223-225 E. Ohio St.

Capital Plumbing Co.
Real Service Real Prices
Hot Water Heaters and Automatic Pumps on the
Buschmann Payment Plan

New and Used Furniture
CASH OR PAYMENTS
WEST SIDE FURNITURE
438 W. WASHINGTON ST.
Lin. 3055. R. T. Ritchey.

F. P. FOULKE
Electrical Contractor
Irvington 1842

Reliable Wreckers
ALL KINDS OF
Building Material
Yard, 628 W. North St.
BONDED WRECKERS
Lincoln 3069

Fletcher Ave. Savings & Loan Assn.
Has Paid 6% Dividends on Savings for 35 Years
10 East Market Street

LET THE COAL BIN STAY EMPTY
Kleen-Heat
Automatic Oil Burning System
Hayes Bros., Inc. Distributors Main 2493

The Principles of the Faith

Of Daniel Webster, John Adams, Thomas Jefferson, Benjamin Franklin, James Garfield, Longfellow, Hawthorne, Emerson, Edward Everett Hale, Florence Nightingale, Susan B. Anthony, Elizabeth Cady Stanton, Julia Ward Howe, and Louisa May Alcott—and countless other scientists, statesmen, philanthropists and educators of our own time as well as of the past.

These principles will be presented in a series of

Seven Evening Addresses

—BY—
REV. MAXWELL SAVAGE, D. D.
of Worcester, Mass.
Preacher for the Unitarian Laymen's League

All Souls' Unitarian Church
A Religious Center With a Civic Circumference.
1453 NORTH ALABAMA STREET
Evenings at 8:00—October 18-25.
(Except Saturday)

LUMBER SUPERIOR MILLWORK
BURNET-BINFORD LUMBER CO.
Thirtieth St. and the Canal Phone RA ndolph 0500

LIGHT and POWER
CALL LINCOLN 2371
A Representative will call to assist you solve your Electrical problems.
Indianapolis Light and Heat Co.
Home Company. 43 Monument Circle. Edison Service.