

MANY 'FOREIGN' TEAMS ON STATE GRID PROGRAM

Butler Leaves for Illinois Fray—I. U. Opens Big Ten Schedule at Michigan—Beloit at N. D.

There will be plenty of outside competition this Saturday for the State college grid teams. Three clubs meet Big Ten foes, Indiana University opening its Western conference season at Michigan in the first game with the Wolverines since 1902.

Butler makes its fourth annual journey to Urbana to meet the Illinois squad. A special train will take local rooters to the scene of battle at 8:30 a. m. The Irvington outfit hopes to give Zuppke's aggregation a terrific battle. The team left this morning at 7. One practice will be held in the Illinois stadium.

Franklin College, which showed exceptionally well against Rose Poly last week, takes on a tough assignment at Madison, Wis., where the Badgers will be met.

Other out-of-State teams to clash with Hoosier teams are Beloit at Notre Dame, Eastern Illinois Normal and Rose Poly at Charleston, Ill., Louisville at Hanover, North Manchester at Adrian, Bradley Tech at State Normal and Bethel at Evansville.

Attention is attracted to the Notre Dame fray not so much because of interest in this Saturday's result but because of the line it will give on the Notre Dame-Army game the following week in New York.

The "Irish" already have convinced the fans that they have another strong outfit, but the skeptical want to see just one more top-heavy score.

The all-Hoosier game of most interest is the De Pauw at Purdue tussle. The Tigers showed up well against Butler on a muddy field, but not many give the Greencastle eleven much of a chance against the Boilermakers.

Wabash is expecting a slight breathing period between its many hard games when the Scarlet takes on Muncie Normal at Crawfordsville. It is the Teachers' first contest.

Indiana Central, the University Heights Club, tackles the Earlham team, which shows signs of real power. The local outfit is in for an interesting afternoon with chances favoring the Quakers.

Vincennes probably is due for another beating at State Normal. Danville Normal was at Oakland City today.

Saturday College Football

STATE TEAM GAMES

Butler at Illinois.
Indiana Central at Earlham.
Indiana U. at Michigan.
De Pauw at Purdue.
Beloit at Notre Dame.
Franklin at Wisconsin.
Muncie Normal at Wabash.
Vincennes at State Normal.
Rose Poly at Eastern Illinois Normal.
Bethel at Evansville.
Louisville at Hanover.
North Manchester at Adrian.
Bradley Tech at State Normal.

OTHER GAMES

(Home Teams Listed First)
Allegheny vs. Geneva.
Amherst vs. Bowdoin.
Arkansas vs. Oklahoma Baptist.
Atlanta vs. Knoxville.
Baldwin-Wallace vs. Kenyon.
Bucknell vs. George Washington.
Brown vs. Pennsylvania.
Bucknell vs. George Washington.
California vs. Olympic Club.
California Agricultural vs. St. Mary's.
Capital vs. Western Reserve.
Carroll vs. Milwaukee Normal.
Case vs. Otterbein.
Chicago vs. Ohio State.
Cincinnati vs. Georgetown.
Cory vs. New Hampshire.
Culver vs. St. Bonaventure.
Connecticut Agricultural vs. Maine.
Cornell vs. Milligan.
Dartmouth vs. Vermont.
Davis-Elkins vs. Juniata.
Delaware vs. Columbia College.
Denison vs. Ohio University.
Drake vs. Kansas Agricultural.
Duke vs. North Carolina.
Florida vs. Southern.
Fordham vs. Gallaudet.
Franklin-Marshall vs. St. John's.
Fresno vs. Santa Clara.
Furman vs. The Citadel.
Georgetown vs. Lebanon Valley.
George Washington vs. Hampton-Sid.
Georgia Tech vs. Penn State.
Gettysburg vs. Haverford.
Grinnell vs. Canisius.
Hamilton vs. Stevens.
Harvard vs. Middlebury.
Holy Cross vs. Providence.
Indiana Wesleyan vs. Augustana.
Iowa vs. St. Louis University.
Iowa State vs. Kansas.

John Carroll vs. Duquesne.
Johns Hopkins vs. Haverford.
Kentucky vs. Clemson.
King vs. Quantico.
Lafayette vs. Washington.
Lehigh vs. Drexel.
Louisiana State vs. Alabama.
Loyola vs. James Millikin.
Marquette vs. Grinnell.
Miami vs. Wittenberg.
Michigan Aggies vs. Lake Forest.
Minnesota vs. Grinnell.
Missouri vs. Nebraska.
Muskegon vs. Hiram.
New York University vs. Union.
North Dakota vs. Jamestown.
Northwestern vs. Carleton.
Olethorpe vs. Centre.
Ohio Northern vs. Heidelberg.
Ohio Wesleyan vs. Akron.
Olivet vs. Kalamazoo.
Oregon vs. Idaho.
Oregon Aggies vs. Gonzaga.
Pittsburgh vs. West Virginia University.
Pittsburgh vs. Washington and Lee.
Rice vs. Trinity.
Rochester vs. Niagara.
Rutgers vs. Maryland.
San Diego vs. California Tech.
St. John's vs. Boston University.
St. Lawrence vs. C. C. N. Y.
St. Xavier vs. Kentucky Wesleyan.
South Dakota vs. Dakota Wesleyan.
South Dakota State vs. Nebraska Wes.
Springfield vs. Ripon.
Staten vs. Norman.
Swarthmore vs. Susquehanna.
Tulane vs. Mississippi.
Tulsa vs. Tennessee Doctors.
U. S. Military Academy vs. Knox.
U. S. Naval Academy vs. Marquette.
Univ. of Southern California vs. Utah.
Univ. Cal. So. Branch vs. Pomona.
Wash. and Jefferson vs. Waynesburg.
West State vs. Grinnell.
Worster vs. Oberlin.
Yale vs. Georgia.



FINE RECORD

Rice Institute Track Coach Is Winner.

By NEA Service
HOUSTON, Texas, Oct. 9.—Coach of ninety place men in the Olympics since 1908, tutor of twenty-one record-breakers in Olympic contests, former head of track and field ath-

letics in all Sweden and Holland, leader of his profession for more than two decades.

Such is the record of E. W. "Ernie" Hjertberg, who has just arrived here to coach Rice Institute tracksters.

Hjertberg formerly was connected in coaching capacities with the New York Athletic Club, the New Jersey A. C., the Knickerbocker A. C., the Irish-American A. C., and Columbia University.

He has what is considered an un-

surpassed record among track and field coaches, as figures above indicate.

Hjertberg, here, joins the coaching staff of J. W. Heisman, veteran grid mentor.

Already, though the track and field season is months away, he has Rice Institute youngsters at work on the cinder paths.

MALONEY'S CHANCE

NEW YORK, Oct. 8.—Jim Maloney, Boston heavyweight, will re-

place King Solomon against Paul Berlenbach on next Monday's Polo Grounds card. In the event Maloney defeats Solomon in their scheduled bout in Boston tonight.

Fall Hats
Now ready.
LEVINSON
your hatter.

Kahn Tailoring Co.

OPENING a Ready-for-Wear Overcoat and Topcoat Store

Directory

Overcoats and Topcoats. Ready for Wear.
FIRST FLOOR

Made to Measure Suits and Overcoats.
SECOND FLOOR

Ready for Wear Suits, Overcoats and Topcoats.
SECOND FLOOR.

Tailoring Shop.
CAPITOL AT ST. CLAIR.

On the Meridian Street Side of the Kahn Bldg.
(Ready Saturday)

Opened for the convenience of men who want quick service in the purchase of their fall and winter overcoats and topcoats.

A store for men who want specially loomed fabrics—fine tailor work and the greatest values known to the clothing business!



Opening Sale of Ready-for-Wear TOPCOATS

Marvelous Imported Fabrics!

The Most Favored Colors

\$24.50 \$29.50

Richly Silk Lined!
Smart in Style!

Special for Opening Day!

Topcoats made of such fabrics in such a fine manner should sell ordinarily for \$35 to \$55!

Opening Sale of Ready-for-Wear OVERCOATS

\$34.50 \$39.50

and \$45

FABRICS from the great looms of the world—native and foreign.

TAILORING by one of the most skilled groups of craftsmen in America—Kahn!

Priced to make them the greatest values to be had.



If You Knew ALL These Facts—You Wouldn't Hesitate A Minute!



DO YOU KNOW—

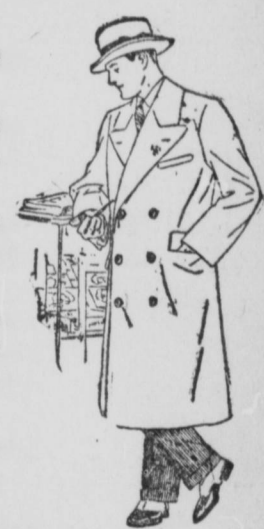
That every Schwartz Suit, Topcoat and Overcoat is a true \$50 value, even though it sells for \$25—no more, no less?

That these remarkable values are possible only because SCHWARTZ SELLS DIRECT FROM FACTORY TO YOU, SO THAT YOU SAVE THE MIDDLEMAN'S PROFIT?

That every Schwartz garment is positively made in the huge Schwartz factory at Cincinnati, and sold to the public through Schwartz-owned, Schwartz-operated stores?

That Schwartz buys materials in large quantities, has large-scale manufacture and sells in huge quantities, and therefore is able to effect every economy "big business" permits, and give YOU the benefit?

When you understand these things, you won't hesitate a minute!



Suits, Topcoats, Overcoats, Tuxedos, All \$25, And There's One to Fit Every Man

NO MORE
\$25
NO LESS

DIRECT From Factory to You—You Save the Middleman's Profit

NO MORE
\$25
NO LESS

Extra Trousers to Match Suit, \$6

SCHWARTZ QUALITY CLOTHES®

Occidental Bldg., S. Illinois, Near Washington Street

OPEN SATURDAY UNTIL 9 P. M.