

Radio Hour

THE CONVENIENT PROGRAM FOR THE RADIO FAN. KNOW WHAT'S IN THE AIR ANY HOUR. TIMES PROGRAMS START DAILY AT 5:30 P. M. AND CONTINUE FOR TWENTY-FOUR HOURS.

(ALL CENTRAL STANDARD TIME)

Today's Best

Copyright, 1925, by United Press
CNRC, Calgary (436 M), 9 p. m.,
MST.—CNRC symphony orchestra.

WFG, Atlantic City (300 M), 8:15
p. m., EST.—Organ recital.

WCAW, Omaha (526 M), 9 p. m.,
CST.—American Legion convention
program.

WRC, Washington (469 M); WJZ,
New York (454 M); WGY, Sche-
nectady (380 M), 8:15 p. m., EST.—
U. S. Army band.

CNRM, Montreal (411 M), 8:30 p.
m., EST.—Grenadier guards band.

NOTE—Today's world's series
game at Pittsburgh begins at 2 p.
m., eastern standard time. Over a
hundred stations from coast to coast
will broadcast play by play reports.

Radio Programs

5:30 P. M.—WCAE (461.3), Pittsburgh—
Orchestra. WCAU (278), Philadelphia—
Orchestra. WBZ (333.4), Springfield—
Ensemble. WCOO (418.4), Minne-
apolis—St. Paul—Children's program.
WGN (370.2), Chicago—Organ. WGR
(319), Buffalo—Orchestra. WGY
(375.5), Schenectady—Trio. WLS
(344.6), Chicago—Organ. WTC
(475.9), Hartford—Trio.

6:35 P. M.—KYW (535.4), Chicago—
Uncle Bob, dinner music.

6:40 P. M.—WGBS (315.6), New York—
Interview.

6:45 P. M.—WGR (319), Buffalo—Fash-
ion talks. WOC (483.5), Davenport—
Chimes. WFI (394.5), Philadelphia—
Orchestra.

Dancing

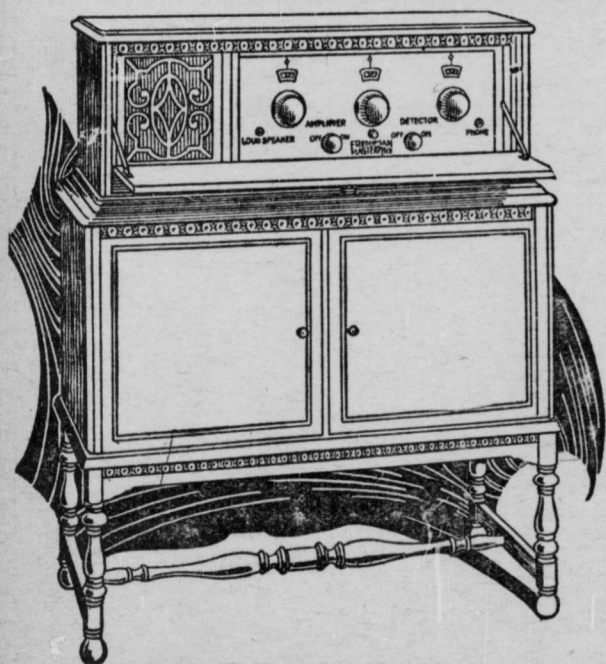
7:30—KPRC.
8:00—WEAR—WTAS.
9:00—WEAF—WCAE—WCCO.
9:30—WBZ—WOAI.
10:00—WEAF—WQJ.
10:30—WGN—WHT.
11:00—WOC.
11:45—WDAF.
12:00—KGO—KPO.

6:00 P. M.—WOK (217.3), Chicago—
Vocal organ, orchestra; string trio.
KDKA (309.1), East Pittsburgh—Ball
scores. WEAF (491.5), New York—
Midweek services. WEAR (380.4),
Cleveland—Melody Maids. WGBS
(315.6), New York—Soprano; Voltaire
hour of music. WHN (361.2), New
York—Variety entertainment. WJR
(517), Detroit—Orchestra; soloists.
KYW (535.4), Chicago—Concert;
speeches. WHAD (275), Milwaukee—
Organ. WMAQ (417.5), Chicago—

The Best There Is in
WELL-KNOWN

"RADIOS" FRANK W. WOODS

70 W. New York St., Indianapolis
Freed-Eisemann, \$75 to \$175
Radiolasuper, \$116 to \$265
Sleeper-Grimes, \$75 to \$100
Radio Sets.



Don't Fail to See the New
FRESHMAN MASTERPIECE
CONSOLE, \$89.50

INDIANAPOLIS MUSIC HOUSE

MA in 2188

(275), Atlantic City—Studio. WHN
(361.2), New York—Music. WJR
(517), Detroit—Serenaders, soloists.
VMAQ (447.5), Chicago—Garden talk.
WORD (275), Batavia—Trio. WRNY
(258.5), New York—King of Sports.
popular songs. WSB (428.3), Atlanta
—Entertainment studio. WTAS (308.8),
Elizir—Orchestra studio.

8:05 P. M.—WRW (273), Tarrytown—
Music.

8:30 P. M.—KOA (322.4), Denver—Or-
chestra. WCAU (278), Philadelphia—
Songs of yesterday. WFAA (475.9),
Dallas—Male quartet. WGBS (315.6),
New York—Hawaiian guitar duets.
WGN (370.2), Chicago—Classical mu-
sic. WHAS (399.3), Louisville—Music
talks. WIP (508.2), Philadelphia—
Melody Trio. WMAQ (447.5), Chicago
—Music. WMC (490.7), Memphis—Mu-
sic and entertainment. WOAI (394.5),
San Antonio—Trio. WSMB (319), New
Orleans—Variety entertainment. WRNY
(258.5), New York—Essays, popular
songs, classic theater.

8:45 P. M.—WHT (400), Chicago—Mel-
ody Masters.

9:00 P. M.—KMA (252), Shenandoah—
Orchestra.

9:00 P. M.—KPRC (296.9), Houston—
Violinist; pianist. WCAU (278), Phila-
delphia—Sesqui-centennial hour. WEAF
(491.5), New York—Concert from Willows.
WGN (370.2), Chicago—Orchestra. Also
WCCO, WFI, WCAE, WJAR, WGBS
(315.6), New York—Pianist; cellist.
WJZ (454.3), New York—The
mayas, also WGBS, WMBB
(250), Chicago—Orchestra; popular

Talks Today

5:30—WCCO.
5:35—KYW.
5:45—WGR.
6:00—KDKA.
6:50—WJY.

program. WOAN (282.8), Lawrence-
burg—Orchestra. WCAU (278), Phila-
delphia—Sesqui-centennial hour. WEAF
(491.5), New York—Concert from Willows.
WGN (370.2), Chicago—Orchestra. Also
WCCO, WFI, WCAE, WJAR, WGBS
(315.6), New York—Pianist; cellist.
WJZ (454.3), New York—The
mayas, also WGBS, WMBB
(250), Chicago—Orchestra; popular

9:15 P. M.—KTHS (374.8), Hot Springs
—Sports; orchestra. KDKA (309.1),
East Pittsburgh—Trio. WEL (348.6),
Boston—Baritone. WHAR (275), At-
lantic City—Lecture period. WREO
(285.5), Lansing—Talk; music. WLS
(344.6), Chicago—Organ.

6:35 P. M.—WGY (379.5), Schenectady
—Book chat, baritone.

6:50 P. M.—WJY (405.2), New York—
Reading.

7 P. M.—KCX (517), Detroit—Music.
WCAU (278), Philadelphia—Trio.
pianist violinist. WEAF (491.5), New
York—Instrumental quartet; also WGBS,
WJAR, WFI, WCAE, WJAR, WGBS
(315.6), New York—Pianist; cellist.
WJZ (454.3), New York—The
mayas, also WGBS, WMBB
(250), Chicago—Orchestra; popular

10:00 P. M.—KYW (535.4), Chicago—At
Home Program. WBCN (268), Chicago—
—Owl Matinee. WEAF (491.5), New
York—Orchestra. WGBS (315.6), New
York—Orchestra. WMAK (265.6), Lock-
port—Program. WOK (217.3), Chicago—

Silent Today

Central—KFAB, KFKX,
KFD, KEMQ, KFUO, KSD,
WCEE, WJJD, WOI, WOWL,
WIL.

Eastern—CAC, CNRM, CNRO,
PWX, WAAM, WAHG, WBAV,
WCAP, WDW, WEBJ, WHAZ,
WLIT, WOO, WOR, WTC,
WTAM, WIP.

Far West—KFAE, KFOA,
KLX, KOA.

—Tenor; piano, vaudeville. WQJ
(447.5), Chicago—Orchestra; radio
artists. WRW (273), Tarrytown—
—Dance. KGO (361.2), Oakland—Three
act comedy. KHJ (405.2), Los Ange-
les—Special program. KPO (428.3), San
Francisco—Music.

10:30 P. M.—KPRC (296.9), Houston—
Organ. WGN (370.2), Chicago—Jazz
Scampers. WGY (379.5), Schenectady—
Organ. WGBS (315.6), New York—Popu-
lar program. WHT (400), Chicago—
Orchestra; tenor; ukelele.

10:45 P. M.—WSB (428.3), Atlanta—
Music.

11:00 P. M.—KFI (467), Los Angeles—
Program. WFAA (475.9), Dallas—
String instrument program. WBO (526),
Des Moines—Little Symphony. WOC
(483.6), Davenport—Orchestra; bary-
tone. WOK (217.3), Chicago—Comedian;
solos; guitar.

11:30 P. M.—WEBB (370.2), Chicago—
Dance selections; vocal.

11:45 P. M.—WDAF (365.6), Kansas
City—Nighthawks' Frolic.

12:00 P. M.—WHT (400), Chicago—
Your Hour League. KGO (361.2), Oak-
land—Orchestra. KFI (467), Los Ange-
les—Program. KPO (428.3), San Fran-
cisco—Orchestra.

1:00 A. M.—WQJ (447.5), Chicago—
Glacier Hour.

STUDIO GOSSIP

Mme. Ida Teimpidis resumes her
lessons in French through WLW
Oct. 1, at 4 p. m.

The second in the series of "Old-
Time Minstrels," which was inaugu-
rated by Dailey Packman, director
of WGBS, will go on the air at 8
o'clock Thursday evening. In pre-
sented this unusual feature to the
radio audience Packman and his as-
sociates have specialized in receiving
the songs and "gags" that were fa-
miliar to the theatergoers of a de-
cade or two ago. Packman's source
for material is his complete musical
library, though he has announced
that he is eager to have any listen-
ers send him songs that are of
twenty-five years vintage and they
will be included in the minstrel pro-
grams. This is to be a weekly fea-
ture from WGBS and has been re-
ceived with a great deal of enthusi-
asm by the radio listeners.

Setting up exercises again are be-
ing broadcast through WLW by Wil-
liam Stradtman of the Cincinnati Y.
M. C. A.

Friday night is play night at
WGY. The WGY Players will pre-
sent the ever-popular Sheridan com-
edy, "The Rivals." Ten Eyck Clay,
director of the Players, will play the
part of Bob Acres, the character ta-
ken, as many will remember, by the
late Joseph Jefferson.

Three of the big eastern football
games will be broadcast through Sta-
tion WSAI in addition to the games
from the University of Cincinnati.
The first is scheduled for Oct. 17,
when Harvard plays Princeton; the
second for Nov. 7, Harvard playing
Yale, and the third for Nov. 28, when
the Army and Navy game brings to
a close the eastern intercollegiate
football season. These games will
go on the air at 12:45 p. m. central
standard time.

Station WDAF, Kansas City, has
announced the installation of a new
and more powerful radio sending
station. The new transmitter now
being installed is 1,000 watts, twice
the power of the present set of
WDAF. The 'd transmitter has an
enviable record for distance. It was
heard five times in London last year.
It also has been received in South
America, Australia and Alaska.

The third football game of the
season will be presented by WSAI
Saturday, Oct. 10, starting at 2:30
p. m. when the University of Cin-
cinnati meets Georgetown University
at Carson Field. Eugene Mitten-
dorf will handle the play by play de-
scription for the radio audience.

Staff artists, announcers and pro-
gram builders at KOA will be heard
exclusively in a two-hour studio pro-
gram Friday evening, commencing
at 8:10 o'clock. The offering is

divided between vocal and in-
strumental numbers and includes
two groups of readings. Ina Raina
and Hulda Helen Edwards, soprano
soloists of the Denver broadcasting
staff, will take part. Others to be
heard are. (R. F.) Ralph Freese,
formerly of Cincinnati, tenor-solos;
Lewis H. Chernoff, director of the
KOA Orchestra, violin solos; Iris
Ruth Pavey, Koa dramatic director,
readings; (G. R. C.) G. Ralph Crowder,
piano solos; Frank Fowler, cello
solos; KOA Orchestra, instrumental
selections, and Samuel Stein, clari-
net solos.

An educational program, consist-
ing of seven speakers, with inci-
dental music between talks, will be
broadcast by KGO Monday evening,
Oct. 12. Each speech is so scheduled
that radio listeners may know with-
in a few minutes the time when
their favorite subject will be dis-
cussed.

ARRANGE LOVE SONG NIGHT

(Continued From Page 1)

Paran Baptist Church singing two
groups, including: "I'm Going to
Meet My Mother," "Where Shall I
Be When the First Trumpet
Sounds," "Build on Dat Shore" and
"Take Good Care of Mother."

11. A second with Eggleston.

12. The Victor Herbert Ensemble
playing "To Maritana," an overture,
and a novelty, "Shuffle and Taps."

13. Eggleston introducing the solo-
ists of the evening Glenn Friermood
of the voice department of the Indi-
ana College of Music and Fine Arts
and Mrs. Friermood.

14. Mr. and Mrs. Friermood in
song with Bomar Cramer at the
piano.

15. Eggleston again on the air.

16. Cello solo played by Bakaleini-
koff with Cramer at the piano.

17. Piano solo by Bomar Cramer.

18. Victor Herbert Ensemble play-
ing Victor Herbert's "Naughty Ma-
rietta" and a string quartet taken
from the ensemble playing old fa-
vorite tunes, such as "Believe Me If
All Those Endearing Young Charms,"
These melodies were arranged by
Theo. Allibrandi of the ensemble.

19. Whistling solo by G. A. Grubb,
with Mrs. Gertrude Buttz at the
piano.

20. A second with Eggleston.

21. Another group of spirituals by
the Garrett Quartet of the Mt. Pa-
ran Baptist Church.

22. Victor Herbert Ensemble play-
ing a descriptive patrol known as
"The Blue and the Gray," a collec-
tion of Civil War melodies.

23. A good-night thought by Rol-
tare Eggleston.

A Baldwin grand piano is used
during the entire program.

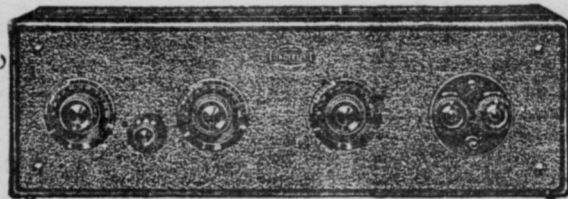
RADIOLAS

Wilson-Stewart Music Co., formerly

Widener's
44 N. Penn.

Pettis Dry Goods Co.

The New York Store Est. 1853



ATWATER-KENT

Model 20 Compact Cabinet Receiving Set

\$80

The Model 20 Compact comprises Two Stages of Tuned
Radio Frequency Amplification, a Detector and Two Stages
of Audio Frequency Amplification, with three tuning dials,
Non-squealing, non-radiating; 5-tube set.

Other Models Atwater-Kent Radios, \$80 to \$350

Sold on Convenient Terms

RADIO PRICE LIST!

	Sets Alone.	Complete Installed.
Freshman Master- piece	\$ 39.50	\$ 99.50
Dan Fan	75.00	140.00
Radiola Super- Heterodyne	116.00	161.50
Adlor-Royal Neutrodyne	125.00	189.00
Neutro Wound	85.00	157.00
Combination Radio and Phonograph	150.00	200.00
Federal	175.00	240.00
Radio Installa- tion in Phonograph	70.00	125.00

—TERMS—

One-Third Down, Balance Easy
Weekly Payments.