

NEW TEACHERS OBTAINED FOR HIGH SCHOOLS

Students Will Meet Twenty-Five Instructors Added to Staffs.

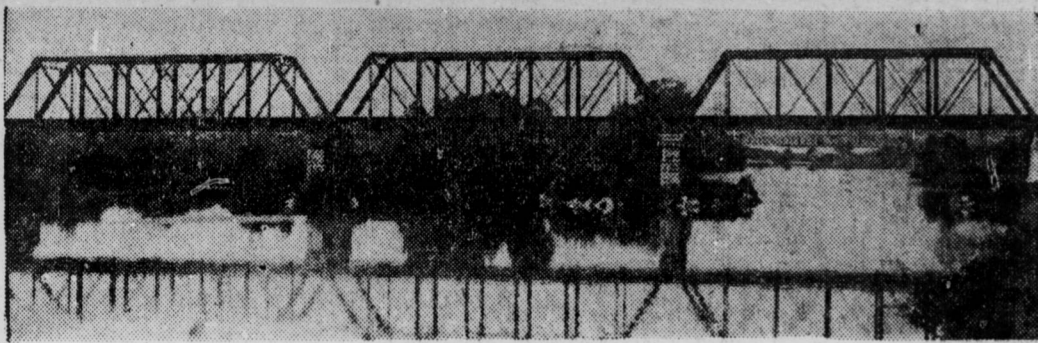
Twenty-five new high school teachers will be among those greeting Indianapolis' 10,000 high school students when they return to classrooms Sept. 8, it was learned today.

The new teachers schools in which they will teach, and their former addresses are: Manual Training High School, Louis Smith, Marion Peoples, Elizabeth Rath, 3860 Winthrop Ave.; Mrs. Verna G. Magee, Three Rivers, Mich.; Dorothy Daily, 3330 Guilford Ave.; Selma Zahl, 2450 Park Ave.; and Mrs. Opal Conrad, Bainbridge, Ind.

New teachers at Shortridge will be William R. Wahrand, Ann Arbor, Mich.; Charlotte Row, 30 Audubon Pl.; Edith Gore, 1417 Tuxedo St.; Reeta Clark, Clarksville, Ind.; Josephine Lee, 309 E. Armstrong St.; J. Archer Culbertson, Hanover, Ind.; and W. F. Wise, Anderson, Ind.

Among the new instructors at Technical will be Cecil McClintock, Lapel, Ind.; Margaret Friedrich, Lancaster, Mo.; E. W. Enninger, Peoria, Ill.; Lucile S. Hodges, 3947 Central Ave.; Mrs. Grace W. Smith, Knoxville, Tenn.; Mary McConnell, Chicago; Clara Inman, 2820 Howard Pl.; Paul A. Foltz, Galveston, Texas; Lester Bolander, Oaklandon, Ind.; and Orlando O. Jay. Edgar F. Dieckrich will be added to the staff at Broad Ripple High School.

This Is Bridge That Spurred Council to Probe



Belt Railroad bridge over White River, north of Raymond St.

Replacement of the Belt Railroad bridge over White River, north of Raymond St., by a \$1,400,000 structure over the new channel of the river is one of the chief causes of the present councilmanic investigation of the board of works.

James M. Ogden, corporation counsel, contends the railroad company should defray total costs of the passageway while the Belt officials had almost persuaded board member to allow the taxpayers to shoulder the burden at one stage of negotiations.

Compromise
The result was a compromise whereby each of the parties involved pay \$700,000.

With the commencement of soundings and the effecting of a uniform line of grading for the "short cut" White River will take to straighten itself out and cast aside its curve, the flood prevention program of Indianapolis, involving expenditure of many million dollars is under way.

City employees, under direction of H. W. Cassaday, flood prevention engineer, are taking soundings of

the present river channel near Morris St.

As they progress along the line of the cut, they will figure elevations and estimate the amount of ground to be excavated on dry land, returning to the river proper near Raymond St.

Faster Drainage

Cutting a new channel for the river, a distance of one mile, will provide for a direct flow of the stream, thereby draining the water faster in flood time and preventing inundation of the lowlands and immense property damage such as occurred in 1913.

With the new channel is involved the building of an enormous levee, sixty feet wide on the east side of the stream. Its top will be four feet above the high water mark reached in 1913, the most disastrous flood in the city's history.

Sees Delays

After the engineers have compiled data on costs of the flood prevention work, a resolution will be prepared. When this will be completed in problematical and is one of the reasons why the Belt Railroad has insisted

on a clause in the track elevation agreement stipulating elevation shall not begin until the flood prevention contract has been ratified.

Ogden has estimated that long delays may result from the inclusion of this clause in the elevation contract by the board of works.

"The orders are to finish the job of drafting plans in sixty days," Cassaday said, "but we'll have to work over time to do it."

Because construction of the new channel will protect a vast area from damage by flood, assessments have been levied against persons owning property in an area of 2,000 acres. At the assessment bureau it was estimated that \$7,000 persons

HAY FEVER GONE
Just take two capsules RAZ-MAH and get quick relief. RAZ-MAH is a powerful antihistamine, and it cures hay fever, asthma, and all other allergic conditions. Get your box today. Use RAZ-MAH in the fall and you will have no trouble with hay fever next year. For sample write to RAZ-MAH, 222 East 12th St., Detroit.

will pay a share of the improvement because their properties will be removed from the possibility of danger from high waters.

The city of Indianapolis will defray 45 per cent, Marion County, 45 per cent and the \$7,000 property owners, 10 per cent of the bill.

CATCHING 'EM UNWARE

NAUEN, Hungary.—A law has been passed here compelling theater managers to turn on the lights without warning at certain intervals while the film is being shown. And couples caught in the act of "petting" are to be heavily fined.

Jaffe Glasses

Serve Thousands of Weak Eyes Throughout Indiana

What we have done for them we can also do for you. Glasses we furnish are made especially for YOU—and will meet every requirement that you may need. Our Prices, too, are usually less and our service ends only when you are perfectly satisfied.



EYES EXAMINED
GLASSES FURNISHED
Open Saturday Until 8:30 p. m.

7 North
Illinois
Street

Jaffe & Sons
OPTOMETRISTS

Opposite
Claypool
Hotel

Established 23 Years Your Guarantee

BERT JAFFE

LEWIS JAFFE

BRANCH STORE AT CONNERSVILLE, IND.

EVEN IF IT HURTS

Now and then we sacrifice a new car sale because we will not pay an excessive price for a used car. If we paid Smith too much we would have to get it back from Jones. That would be unfair—and we believe in fairness, even if it hurts.

USED CAR STORE

C. H. Wallerich Co.

Dodge Brothers Motor Cars
126-28 W. New York St. Lincoln 6031.
Open 8 a. m. Till 9:30 p. m., Daily and Sunday

DODGE BROTHERS DEALERS SELL GOOD USED CARS

SAVE MONEY ON YOUR TIRES

30x3
First
Quality
\$5.75

30x3 1/2
Standard
Cords
\$8.50
Tube Included

30x3 1/2
First
Quality
\$6.75

34x7.30
Balloon
\$19.70
Tube Included

Buy all your tires here at the Consumers Tire Co.—Indianapolis' most reliable tire house. The Consumer's with huge cash purchases, is able always to offer the highest quality tires at prices away below the market. In

Goodyear Cords
All weather tread, first
quality, fresh stock, 30x
3 1/2 Oversize,
\$13.70
Tube Included

Very Special
Balloon Cords
29x4.40
\$12.90
Tube Given

most cases prices quoted on America's best tires at the Consumers are lower by dollars than you are asked to pay for cheap inferior merchandise elsewhere. Make it a habit—when you need tires—buy them at the Consumers and know you are buying at absolutely the lowest prices in town.

30x3 1/2
OVERSIZE
First quality,
\$10.95
Tube Given

Cupples
Cord
34x4
\$12.90
Tube Included

Michelin Balloons

First Quality	
21x4.40	\$15.25
22x4.95	\$21.00
23x4.95	\$21.50
23x5.77	\$26.70
24x5.67	\$27.50
29x4.40	\$15.10
30x4.95	\$21.00
31x4.95	\$21.70
30x5.25	\$23.20
31x5.25	\$27.00
30x5.77	\$27.30
32x5.77	\$29.30
33x6.00	\$28.66
32x6.20	\$31.30
33x6.20	\$32.45
33x6.75	\$38.60

Erie Cords

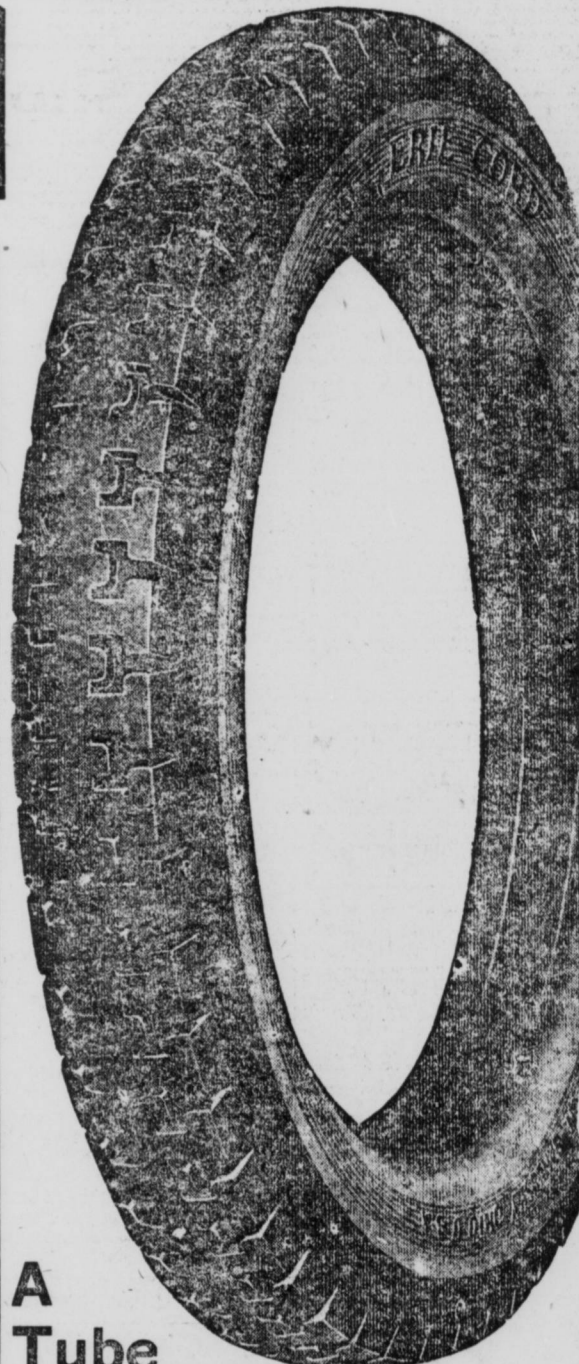
Guaranteed 12,000 Miles	
30x3 1/2 Reg.	\$12.75
32x3 1/2	\$17.60
31x4	\$18.40
32x4	\$20.30
33x4	\$20.50
34x4	\$20.80
32x4 1/2	\$25.50
33x4 1/2	\$25.85
34x4 1/2	\$26.95
35x4 1/2	\$28.10
32x5	\$29.85
35x5	\$31.85

Standard

Makes at Low Prices	
31x4	\$13.50
32x4	\$13.50
33x4	\$14.25
32x4 1/2	\$16.50
35x5	\$22.50

Balloon Tires

29x4.40	\$12.90
31x4.40	\$12.90
30x5.25	\$16.50
31x5.25	\$17.00
31x4.95	\$16.00
32x4.95	\$17.25
33x4.95	\$17.75
34x4.95	\$18.00
32x5.77	\$21.00
34x5.77	\$21.40
35x5.67	\$22.00
32x6.20	\$24.20
33x6.20	\$24.60
34x7.30	\$19.70



A good name, built on quality and performance

Michelin CORDS

'The Safest Tire on Earth'

MICHELINS are safe in more ways than one. The extra plies of high-quality cord with which MICHELINS are blessed accounts for the many more thousands of miles they give.

Unlike most other nationally known makes, MICHELINS are built to stand the tremendous strain that road conditions place upon a tire. They are built to wear on Indianapolis streets—built to stand just those things which ruin the average tire long before you get the mileage you have a right to expect.

30x3 1/2	\$10.95
30x3 1/2 O. S.	\$12.95
32x3 1/2 Reg.	\$16.35
31x4	\$19.25
32x4	\$20.50
33x4	\$21.25
34x4	\$21.75
32x4 1/2	\$27.25
33x4 1/2	\$27.50
34x4 1/2	\$28.25
30x5	\$31.75
33x5	\$32.75
35x5	\$34.25

A
Tube

GIVEN WITH EVERY CORD TIRE

Every Tire Guaranteed

We guarantee every one of these Cord Tires to be absolutely first grade, new, fresh stock. Only because of a large spot cash purchase is it possible to offer such tires at prices so ridiculously low.

CONSUMERS TIRE CO.

249 N. Delaware St.

Open Saturday Evening and
Sunday Until 2 P. M.

Lincoln 6063

Free Delivery—Free Mounting—Parcel Post Paid

End of Month Sale of the

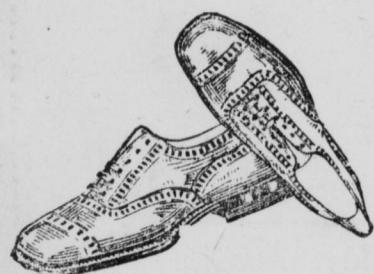
Famous WALK-OVER Shoes

Continues Friday, Saturday and includes Monday: 1,563 pairs from which to choose. Every pair from our regular stock.

\$3.85

THREE GREAT GROUPS

\$6.85



PATENTS
TANS
BLACK
OXFORDS
SHOES



PATENTS
SATINS
WHITE
TANS
PUMPS
SPORTS



MEN'S AND WOMEN'S

Store Opens 7:30 A. M.
Closes 5:30 P. M. During Sale

Open Saturday Evening
Until 9 o'clock

Walk-Over
SHOE STORE
28 N. Pennsylvania St.

We advise early selection.
Special fitting service as always.

Special Sale of Men's and
Women's Hosiery
Just Inside the Door

GOING-GO-GONE

Gone Is the 5th Floor—Gone Is the 4th Floor—Gone Is the 3rd Floor
Going Is the 2nd Floor—Going Is the Main Floor—Going Is the Basement

GO—Slick and Clean to the Bare Walls—GO

Lilly Hardware Co.

114-16-18 EAST WASHINGTON STREET

One of the oldest, largest institutions of its kind in America. Reliable, standard merchandise. Goods the people know. Goods they want. All high-grade, first A-1 quality.

The End Is Near—Ridiculous Prices Sweep the Store
You Should See the Dishes, Etc., Heaped Upon

FIVE AND DIME COUNTERS NOW

Women and men are actually picking out choicest goods by armfuls. Yes, many 50c goods for 5c and 10c.

We're Selling It All—Quitting for Good—Yes!

Painters, paperhangers, electricians, carpenters, plumbers, masons, plasterers, machinists, garages, hotels, restaurants, cafes, soft drink parlors—here's your opportunity if ever you did have one. Contractors, jobbers, cabinet makers, GET IN ON THIS SALE.

GAS AND OIL RANGES

Washing Machines, Wringers, Mops, Galvanized Ware, Dusters, Oil Mops, Polishers, etc. Iron and Tinware Pyrex, Aluminum, Porcelain, Granite, Wooden, etc.

ELECTRIC GOODS, CUTLERY, ETC.

Rogers' and Community Silverware, Pocket Knives, Razors, Blades, Butcher Knives, Carving Sets, Clocks, Silver Sets, etc.

RIDICULOUS PRICES SWEEP the STORE

Get Your Share—Pick 'em Out—Bargains Galore!

Paints, Varnishes, Oils, Enamels, Brushes, Gas and Oil Stoves, Washing Machines, Ice Boxes, Carpet Sweepers, Kitchen Ware, Cutlery, Radio, Auto Accessories, Contractors' Goods, Screens and Wire, Ladders, Heavy Tools of all kinds, Fireplace Fixtures, Bathroom Fixtures, Tools for Carpenters, Plumbers, Tinner, Mechanics, Masons, Plasterers, Machinists, Farmers, Gardeners, etc. Lawn Mowers, etc. Hose, Rope, Cable, Wire, etc. Snow Shovels—\$1.00 ones for only 15c. Yes, there must be \$60,000.00 yet to sell before September 5.

Doors Open 8 A. M.—Close 1 P. M.—Be There