

## RACE DRIVER, IN LIGHT SIX, FINDS BIG HILLS 'EASY'

'Cannon-Ball' Baker Tries  
Out Oldsmobile Ma-  
chine.

Purchasing a new light six car and driving over the highest hills of Brown County the same day was an experiment performed this week by E. G. (Cannon-Ball) Baker, race track and cross-country driver, with a new light six Oldsmobile, the first to be sold in Indiana.

Baker's car had but 225 miles on the speedometer and the motor was unusually stiff. Notwithstanding this "Cannon-Ball" decided to take three passengers along.

The destination of the trip was the famous Kelly Hill, in Brown County, which is known all over this section of the country for its grade and which is, according to the speedometer, one-half of a mile long. With four passengers the car was given a thirty-five-mile run at the start. When the car reached the summit it was going twenty-seven miles per hour. The combined weight of the four passengers was 725 pounds, and with the car made a total of 2,925 pounds.

Not satisfied with these results, Baker drove down the road and found a man mowing weeds. He consented to get into the car, and the hill was again attacked. The combined weight of the five passengers was 590 pounds or a total of 3,170 pounds for the car. When it reached the top this time it was doing twenty-eight miles an hour.

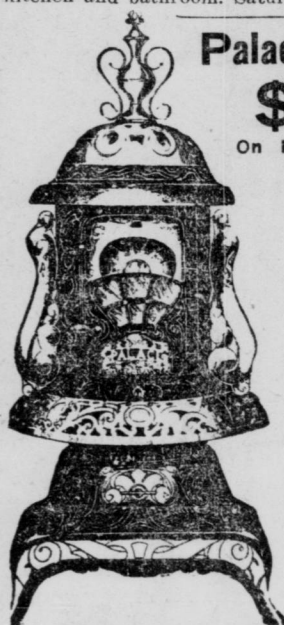
The car was driven to Bloomington and the Buck Creek Hill known for its hairpin turns and steep ascent, was mounted at twenty-four miles an hour.

### Extraordinary Special Here's a Beautiful 9x12 Seamless Axminster Rug

In beautiful designs, newest patterns—for many purposes—at the remarkable price—

**\$39.50**

Cash or Easy Payments.  
4½x4½ Stove Patterns Congoleum Genuine  
Gold Seal Rugs; also suitable for  
kitchen and bathroom. Saturday only... **\$1.98**



### Palace Hotblast \$55.75

On Easy Terms if You  
Wish.

Set up, complete, including three joints of pipe, one elbow, one collar, one damper and one beautiful, long-wearing wood lined zinc.

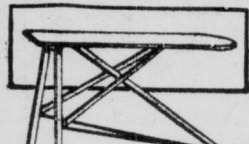


### 5-Pc. Breakfast Sets

This is something extraordinary  
This is strongly built; in 3  
beautiful two-tone enameled fin-  
ishes. These are exceptional for  
their beauty and durability. The  
price is low for the quality. Get  
one Saturday.

**\$26.75**

Cash or Easy Payments.



### Special Ironing Board

For Saturday Only  
Strong, durable, useful. Price  
low. Something every home  
should have.

**\$1.69**

Saturday Only.

**National Furniture Co.**  
"Out of the High Rent District" 335 & 343 W. Wash. St.

McCall Printed  
Patterns in new  
fall and winter de-  
signs are here at  
15¢ to 45¢.

## Goldstein Brothers

WASHINGTON & DELAWARE STREETS

A Complete As-  
sortment of School  
Supplies, including  
note books, tablets,  
pencils, etc.

### Men's Handkerchiefs

**12½c**

Full size, soft finished cotton  
handkerchiefs, with fast colored  
woven or satin striped border.  
Unusual value at 12½c.

### Children's School Handkerchiefs

**5c**

Nice handkerchiefs for  
the kiddies have printed  
or fast colored woven  
borders and embroidered  
corners.

(Street Floor)

### Toilet Goods

Freeman's Face Powder, 39¢.  
Carmen Face Powder, 29¢.  
Capri Face Powder, 79¢.  
Colgate's Talcum Powder, La  
France, Rose, Violet, Eclat and  
Cashmere Bouquet Talcum Pow-  
der, 16¢.  
Mary Garden Talcum Powder,  
16¢.  
Armour's Baby Balm Unscented  
Talcum Powder, 19¢.

(Street Floor)

## The Popular Sport Coats

Are Here in Stunning Polaires, Overplaid  
Woolens and the Fashionable STRIPES

**\$19.75**

Striking coats with vertical or horizontal stripes—daring, new and  
beautiful. Plaid coats with an English swagger in their mannish  
tailored lines. Practical plain colors—for the more conservative woman.  
Wrappy styles for the young woman who seeks something "different."  
Half or full lined. Exceptional values at **\$19.75**.

## New Fall Dresses

Made of Poiret Twill, Charmeuse,  
Canton Crepe and Satin Canton

Stunning new fall dresses, varying from  
the quaintly charming basque to the long  
queenly dress of slender lines, with rippling  
pleated flounces. In navy, black, tan or brown.  
Beaded dresses—embroidered  
dresses—dresses with touches of  
white lace. Sizes 16 to 46.  
(Second Floor)

**\$19.75**

## All Wool Blankets, \$8.49 Pr.

Effective block designs, in attractive colors, double bed size,  
66x80 inches; weight about 4½ pounds; a pair, **\$8.49**.

### Plaid Blankets

**\$4.49 Pr.**

Genuine "Nashua" woolnap  
blankets, in beautiful color com-  
binations; double shell stitched;  
double bed size, 66x80 inches.

### Cotton Blankets

**\$2.25 Pr.**

Double cotton blankets, with  
grey, pink or blue borders; shell  
stitched; size 64x96 inches.

### Cotton Comforts

**\$2.98**

Silkoline covered comforts,  
filled with clean fluffy cotton;  
extra large size, 70x84 inches;  
average weight, 7½ pounds.

### Army Blankets

**\$2.49**

Khaki colored or grey army  
blankets, very heavy and warm,  
excellent value at **\$2.49**.

(Street Floor)

## Boys' 2-Pants Suits

Made of All-Wool Cassimeres in  
Brown, Grey and Green Mixtures

**\$9.75**

Manly Norfolk suits, with pleated back,  
all-around belt and patch pockets—the  
latest style for boys' fall wear. Coat is  
alpaca lined; trousers, too, are lined  
throughout. Sizes 7 to 18.

### BOYS' FALL HATS

**\$1.15 to \$1.98**

Tweed, flannel and polo cloth hats, in the popular turn-up  
and tam styles, in light tan, grey, blue or brown. Sizes 6 to 7.

(Annex)

## C. B. Elastic Corsets

Made of Coutil and Elastic

**\$1.50**

Comfort with correct style is embodied in these  
scientifically designed corsets, in clasp-on style,  
in pink. Sizes 22 to 34. Unusual value at **\$1.50**.

(Third Floor)

## Princess Slips

Made of Nice Quality  
Sateen

Trim fitting princess slips, that pro-  
vide a perfect, smooth foundation for  
fall dresses are here at a decidedly  
modest price.

### In Black, Brown, Navy

Sizes 36 to 44. Exceptional value  
at **\$1**.

(Third Floor)

## Notions

COLLAR BANDS, fully shrunk,  
sizes 12½ to 18, **15¢**.

COLLAR BANDS, unshrunk;  
½ inch allowed for shrinkage;  
sizes 12 to 18, **10¢**.

MACHINE NEEDLES, for every  
make of machine; tube, **10¢**.

MACHINE OIL, best quality, 3-  
ounce bottles, **15¢**.

MACHINE BELTS, **29¢**.

MERCERIZED DARNING COT-  
TON, desirable colors, ball, **6¢**.

DARNING COTTON, black,  
white, brown; ball, **2¢**.

SNAP FASTENERS, black or  
nickel color, dozen on card; will  
not rust; card, **5¢**.

GOLD PLATED SAFETY PINS,  
one dozen on a card; sizes 00, 0  
and 1, **10¢**; sizes 2, 2½ and 3,  
**15¢**.

LARGE SIZE PAPER SHOP-  
PING BAGS, **8¢**.

SHOPPING BAGS, imitation  
leather, **25¢**.

CEDAR BAGS, size 26x54  
inches; for protecting clothing;  
**10¢**.

KOTEX SANITARY NAPKINS,  
good weight; one dozen in box,  
**49¢**.

SANITARY APRONS, made of  
pure rubber, good size, **49¢**.

SCISSORS AND SHEARS, solid  
steel, all sizes and kinds, fully  
guaranteed, **49¢ to \$1.50**.

STORK EMBROIDERY SCIS-  
SORS, made of good steel, **49¢**.

FANCY SHIRRED ELASTIC,  
for garters also; for baby cab  
straps; all colors; **59¢ to 69¢**.

(Street Floor)

## Have You Visited Our New Art Needlework Section?



Every day sees the arrival of many lovely, unusual stamped ar-  
ticles in this department. The interval between now and Christ-  
mas is giving many resourceful women an opportunity to plan and  
embroider many delightful holiday gifts. You'll find this depart-  
ment rich in gift suggestions!

### Stamped Towels, 29c

Stamped towels, guest size, in  
many charming flower and con-  
ventional designs, easy to embroider,  
**29¢**.

### Stamped Towels, 25c

Tea towels, in appropriate de-  
signs, made of good quality woven  
striped toweling, excellent value  
at **25¢**.

### Rompers, 49c

Children's rompers, stamped in  
cunning juvenile designs, made of  
good quality unbleached material;  
sizes 1 and 2 years.

### Stamped Aprons, 59c

Women's stamped aprons, made  
of good quality unbleached muslin  
in pretty designs; very easy for  
the needle-worker.

(Street Floor)

## Stationery Specials

STATIONERY, one-pound box,  
in white, pink, blue or yellow;  
good quality; box, **19¢**.

ENVELOPES to match, 25 in  
package, **10¢**.

ELAM'S TWENTIETH CEN-  
TURY STATIONERY, 24 sheets  
of paper and an equal number  
of envelopes, 89¢ quality, **69¢**.

(Street Floor)

### CHATEAU LINEN STATION- ERY, 24 sheets and 24 envel- opes; some with cards to match; box, **35¢** or **3 for \$1**.

"WIRELESS" PLAYING  
CARDS, good quality, **25¢**.

SCHOOL TABLETS AND  
PENCILS, **5¢** and **10¢**.

(Street Floor)

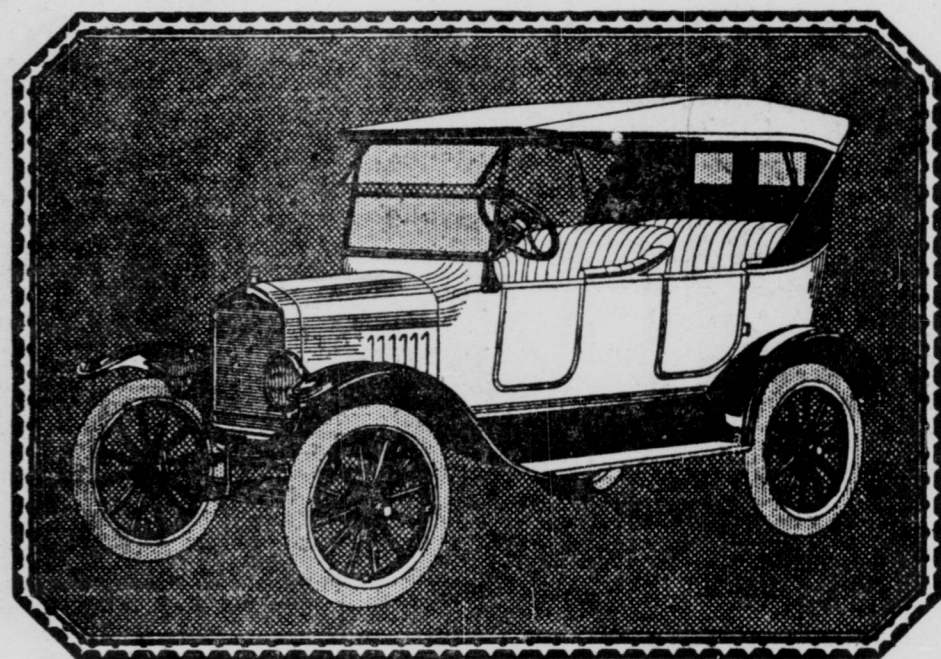
### Sateen

## Bloomers 89c

Made of serviceable sateen,  
cut full, in white, flesh  
or black. 27 and 29 lengths.  
Exceptional value at **89¢**.

(Third Floor)

**Ford**  
THE UNIVERSAL CAR



## New Touring Car

Looking at the new touring car from the side, you are at once  
favorably impressed with the effect of longer, more graceful lines  
secured by enlarging the cowl and raising the radiator.

Slanting windshield and one-man top lend material aid in giving  
the entire car a lower, more stylish appearance.

An apron connecting the radiator with the fender skirts is also a  
decided improvement.

A comfort feature much appreciated by owners, is the additional  
leg room provided by the enlargement of the cowl.

Allow the nearest Ford dealer to show you the entire line of new  
Ford cars now on display in his show room.

These cars can be obtained through  
the Ford Weekly Purchase Plan.

Authorized Ford Dealers

**Ford**  
CARS · TRUCKS · TRACTORS