

# Building and Contracting News-Home Building Department

**Quality** "Our Motto"—Building material of the highest standard of quality, combined with the best of service at the lowest possible price.

## Indianapolis Coal Co.

Brazil Clay Co. Face Brick  
Bishopric Stucco Base  
Elastica Stucco  
232-8 Bankers Trust Building  
MA in 1700

## F. E. TROSKY

MERCHANT PLUMBER  
PLUMBING AND HEATING  
Randolph 1817  
2919 Central Avenue.

**ENAMELITE SYSTEM**  
Specialists in  
Re-Enameling of Kalex and  
Reed Furniture  
5-Piece Breakfast Room Set, any  
combination of colors, satin or  
two-tone effect... \$12  
Reed or Kalex, complete suite,  
any combination, \$25  
2-tone effects... \$25  
1009-15 N. Keystone Ave.

**FERMOR S. CANNON**  
ARCHITECT  
21 Virginia Ave.  
Circle 2752

**SUNBEAM**  
Pipe and Pipeless Furnaces  
Repairs for All Makes of Cast or  
Steel Furnaces  
A. ARNOLD  
4821 College WA 4876

**CALL ON**  
Heating and Plumbing  
**CALLON BROS.**

Bathroom Complete, \$90  
Koehler Enamel Ware  
3220 E. Michigan St.

**A Ready Mixed PAINT**  
FOR EVERY PURPOSE  
Hatfield Paint Co.  
Main 104-S. Meridian St. Lincoln  
2303 INDIANAPOLIS 3725  
Phone and Mail Orders Given Prompt Attention

**LIGHT and POWER**  
CALL LINCOLN 2371

A Representative will call to assist you solve your Electrical problems.

**Indianapolis Light and Heat Co.**  
Home Company. 43 Monument Circle. Edison Service.

FRAMES, INTERIOR FINISH,  
MILL AND CABINET WORK,  
LUMBER AND ROOFING  
Estimates Furnished  
All Work Guaranteed  
Ragsdale Lumber Co.  
3132-54 N. Sherman Dr. Web. 3456

**Capital Plumbing Co.**  
Real Service Real Prices  
In all kinds of plumbing.  
Get our estimates.  
34th and Capitol Ave. HAR. 2970

Established 1872  
**THE A. B. KEEPORT CO., INC.**  
Cement Blocks, Brick, Plaster, Stucco and all kinds high grade  
Building Materials.  
MOTOR TRUCK DELIVERY TO ALL PARTS OF INDIANAPOLIS  
620 N. Senate Ave. Phones LI. 2742 or Main 0642

**ISKO** Electric Refrigeration  
Simplest of all ice machines and  
cheapest to operate. Ice for  
your table and ice box kept just  
above the freezing point at all  
times. Many in use here for  
four years.  
W. D. LONG & CO., 144 E. Ohio St. Lincoln 7110

**Direct From Factory to Consumer**  
**MARION PAINT COMPANY**  
358-366 S. Meridian St. CI role 0165  
Branch, 123 N. Alabama. MA in 0368.

**FLY-O-CIDE**  
"MEANS FLY SUICIDE"  
Rids Restaurants, Homes and Camps  
of Flies and Mosquitoes.  
Don't use dangerous poisons and sticky papers  
to get rid of these pests. Fly-O-Cide is non-poisonous,  
clean and gives a pleasing odor to the atmosphere.  
A few sprays about the room kills every fly instantly.  
ALBERT G. MAAS 31 Virginia Ave. Main 1225

When You Think of  
**BRICK WORK**  
Think of  
**W. W. WISE**  
206 Ind. Trust Bldg. Circle 2164.

Cement, Lime, Lath, Wall Plaster,  
Sewer Tile and  
Best Grades of Coal  
**Hitzelberger Fuel & Supply Co.**  
RAndolph 8500  
Yards Roach and Canal

## Dutch Colonial Home Stands as Imposing Reminder of an Age When Its Luxuries Were Things Unknown

The dignity of the Dutch Colonial house, combined with the charm and artistry of present modernization, has resulted most happily in the new home of Mr. and Mrs. Herman Deupree, 4401 Broadway.

Facing Forty-Fourth St., the house is ideally situated on an unusually deep lot, with sufficient elevation and breadth to afford a background that is suitable for the imposing character of the house.

Of soft salmon-colored bricks that seem to belong to the Colonial age, with dormers of wide siding, painted an ivory-white, window shutters of green and slate roof of the same shade, the exterior is most attractive. A winding cement walk, bordered with a formal brick pattern, leads

from the street to the entrance porch, typically Dutch Colonial, with seats on either side. The solid heavy door, with brass knocker, reminiscent of the days of our forefathers, opens to admit one to a lovely center hall.

What a far cry it is from the oppressive atmosphere created by the designing and furnishing of a house built a half century ago to the delightfully welcoming coolness and comfort of the Deupree home! The architect, Fermo S. Cannon, so skillfully planned the house that no possible convenience has been lost sight of yet at the same time the dignity of the house as a whole and the beauty of every detail have been kept intact.

No characteristic lends more to the beauty of the interior than does the artistic use of colors, relieving the formality of the true colonial type with a charming friendliness.

The center hall is simply furnished; an old-fashioned drop leaf table over which is suspended a round mirror, with chairs to match, form the only unit of furnishing in the room. Green

from the street to the entrance porch, typically Dutch Colonial, with seats on either side. The solid heavy door, with brass knocker, reminiscent of the days of our forefathers, opens to admit one to a lovely center hall.

What a far cry it is from the oppressive atmosphere created by the designing and furnishing of a house built a half century ago to the delightfully welcoming coolness and comfort of the Deupree home! The architect, Fermo S. Cannon, so skillfully planned the house that no possible convenience has been lost sight of yet at the same time the dignity of the house as a whole and the beauty of every detail have been kept intact.

No characteristic lends more to the beauty of the interior than does the artistic use of colors, relieving the formality of the true colonial type with a charming friendliness.

The center hall is simply furnished; an old-fashioned drop leaf table over which is suspended a round mirror, with chairs to match, form the only unit of furnishing in the room. Green

from the street to the entrance porch, typically Dutch Colonial, with seats on either side. The solid heavy door, with brass knocker, reminiscent of the days of our forefathers, opens to admit one to a lovely center hall.

What a far cry it is from the oppressive atmosphere created by the designing and furnishing of a house built a half century ago to the delightfully welcoming coolness and comfort of the Deupree home! The architect, Fermo S. Cannon, so skillfully planned the house that no possible convenience has been lost sight of yet at the same time the dignity of the house as a whole and the beauty of every detail have been kept intact.

No characteristic lends more to the beauty of the interior than does the artistic use of colors, relieving the formality of the true colonial type with a charming friendliness.

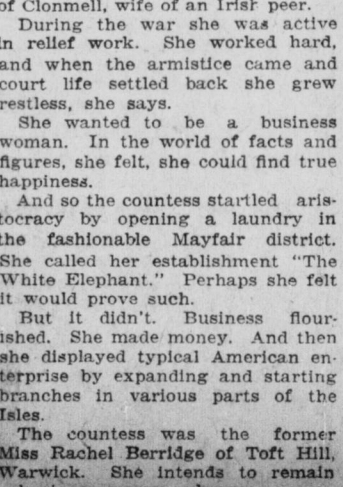
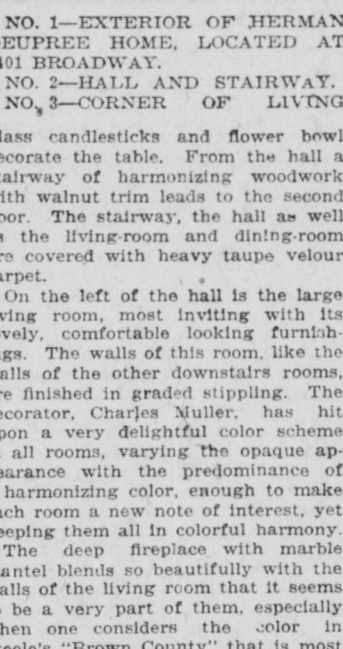
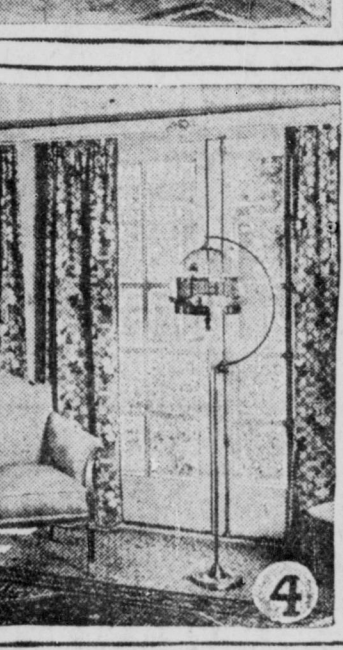
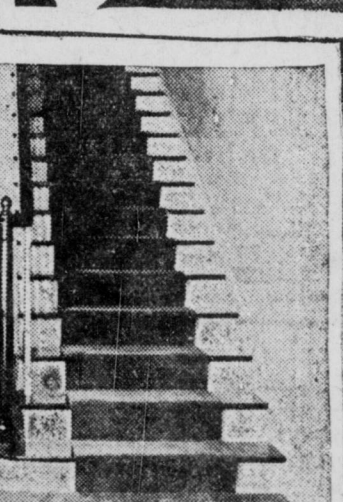
The center hall is simply furnished; an old-fashioned drop leaf table over which is suspended a round mirror, with chairs to match, form the only unit of furnishing in the room. Green

from the street to the entrance porch, typically Dutch Colonial, with seats on either side. The solid heavy door, with brass knocker, reminiscent of the days of our forefathers, opens to admit one to a lovely center hall.

What a far cry it is from the oppressive atmosphere created by the designing and furnishing of a house built a half century ago to the delightfully welcoming coolness and comfort of the Deupree home! The architect, Fermo S. Cannon, so skillfully planned the house that no possible convenience has been lost sight of yet at the same time the dignity of the house as a whole and the beauty of every detail have been kept intact.

No characteristic lends more to the beauty of the interior than does the artistic use of colors, relieving the formality of the true colonial type with a charming friendliness.

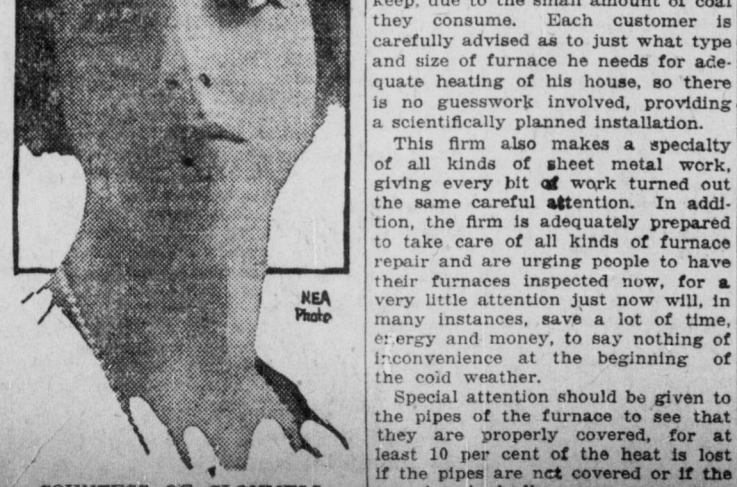
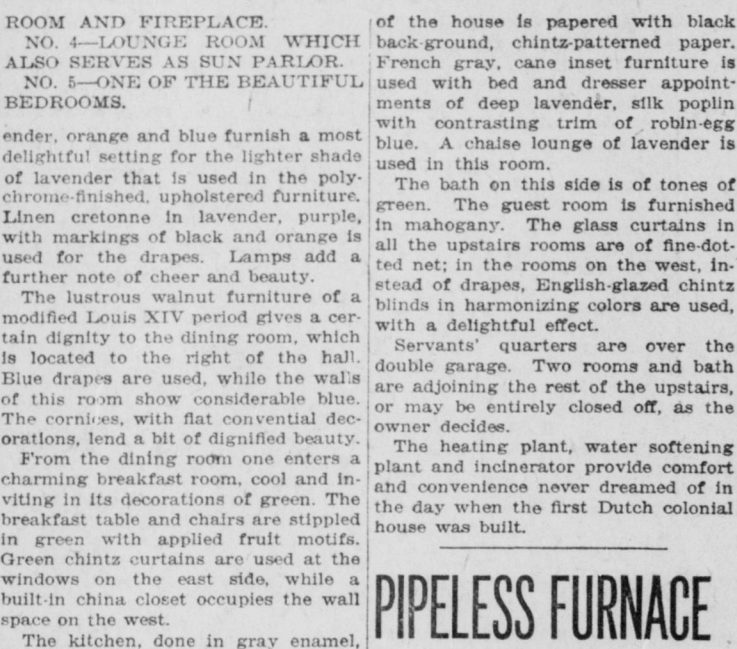
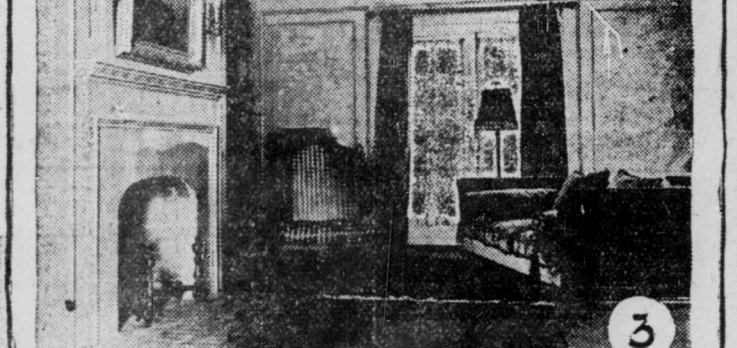
The center hall is simply furnished; an old-fashioned drop leaf table over which is suspended a round mirror, with chairs to match, form the only unit of furnishing in the room. Green



with connecting baths. A dressing room occupies the space at the front of the hall, and it is most complete with full-length mirrored doors, shelves and drawers for every kind of clothing.

The children's bedrooms are on the east side of the hall. Promising fairy dreams, indeed, is the charming room occupied by the little daughter; the opalescent-finished furniture, the cameo-like paper, the flower-sprigged chintz drapes, with valances of rose-colored ruffles, all combine to make a room of rare loveliness. The bath on this side is of mat, glazed tile in buff shades, simply but fully equipped. Ivory furniture is used in the other room in this suite, with blue predominating in the color scheme.

The front bedroom on the west side



1415 Commerce WEBSTER 0110.  
**BROOKSIDE LUMBER CO.**  
COURTESY—SATISFACTION—PROMPTNESS  
ENLARGED PLANT ENLARGED SERVICE  
W. J. Goodwin, Manager.

"You Can Get It at Vonnegut's"  
**For Building Hardware**  
—Vonnegut's

Come to Vonnegut's and get the combined experience of men who know the building game thoroughly. In addition to builders' hardware we carry the following lines: Stanley Garage Hardware, Murphy Ins-Dor Beds and Ironing Boards, Burton-Dixie Compartment Mattresses, Bird & Son Neponset Roofing and Wall Board, Flaximum Insulating Material and Kolstad Built-In Mail Boxes.

**VONNEGUT HARDWARE CO.**  
120-124 E. Wash. St.

**PLUMBING**  
INSTALLED ON  
"The Buschmann Payment Plan"  
BY ANY RESPONSIBLE PLUMBER  
FOR INFORMATION SEE  
**August Buschmann & Sons, Inc.**  
MA in 0973 11th and College Ave.

Quality Home Builders  
**Indiana Builders Corporation**  
Circle 6725 1011-12 Lemcke Bldg.

**BRANNUM-KEENE LUMBER CO.**  
LUMBER AND MILL WORK  
"WE HURRY"

FOR OVER TWENTY YEARS  
The Trade-Mark of Quality, Workmanship and Service  
**HAYES BROTHERS**  
(Incorporated)  
PLUMBING AND HEATING SPECIALISTS  
MA in 2492  
236-38 West Vermont Street

**Builders Construction Co.**  
Engineers and Builders  
540 N. Meridian St. Main 4565

One of the LARGEST—One of the BEST!  
**INDIANAPOLIS LUMBER CO.**  
"Every thing in Lumber"

"Build with Brick. It's Cheaper"  
**Fiery Reds "Afghan" Delicious Chocolates**  
Gas Burned  
**JAS. B. ADAMS & SON, INC.**  
Office and Display Room  
321-322 Lemcke Building. LI neoin 5014

**BEDFORD STONE & CONSTRUCTION CO.**  
CONTRACTORS—ENGINEERS  
810-15 Fletcher Savings and Trust Building  
Indianapolis, Indiana

**THE BRUNSWICK-BALKE-COLLENDER CO.**  
MANUFACTURERS  
Pocket Billiard and Billiard Tables, Bowling Alleys and supplies.  
Brunswick equipment used in all up-to-date establishments.  
We Originate—Others Copy  
Local Branch  
111 South Pennsylvania Street. Tel. MA in 0381.

Is Your Fire and Casualty Insurance Adequate?  
Let Us Solve Your Insurance Coverage  
IT PAYS TO INSURE WITH AN OLD ESTABLISHED OFFICE  
**THEODORE STEIN, JR.**  
GENERAL INSURANCE  
240-44 Consolidated Bldg. MA in 3433-3434

**Railroadmen's Building and Savings Association**  
Has helped more people own homes in Indianapolis than any other like institution.  
21 VIRGINIA AVENUE

**The Smoking Chimney Is Under Sentence of Death**  
Help Speed the Final Execution  
**USE COKE**  
**Citizens Gas Company**

**BOY FACES CHARGE HERE**  
Louis Pollock Brought From Noblesville for Auto-Theft.

Louis Pollock, 18, of 1727 Northwestern Ave., was brought from Noblesville to Indianapolis early today on a charge of vehicle taking. Pollock was arrested on charges of speeding and driving with out a license, at Noblesville, Wednesday. He is charged with stealing an automobile belonging to the L. H. McFarland Company, 418 N. Capitol Ave., Tuesday night. The car was parked in front of the company's sales room when it disappeared.

**NEW FUEL AND SUPPLY COMPANY**  
OPENS ITS DOORS

Hitzelberger Concern Carries Complete Line of Necessary Materials.

The great impetus that has been given the building industry during the past several months has been responsible for various new concerns handling building materials to spring up over different parts of the city.

The Hitzelberger Fuel and Supply Company is a new concern that has recently opened for business at Roache St. and the canal. Mr. Hitzelberger has been prominent in business circles for a number of years and is well known over the city.

This company carries a complete line of cement, lime wall plaster, lath, sewer tile and other materials necessary to the construction of a home or business building. Only first-class materials are carried and authentic advice is given the customer in regard to kinds and quantities of materials best suited to his particular needs.

In addition to building materials, this company carries the best grades of coal and coke. The company urges the buying of coal now, so that the customer will have no trouble in getting the quality of coal desired and will have it in storage ready for use at the beginning of cold weather.

Last year the trouble many people experienced in getting coal of the better grades has made them much more ready to buy earlier this year, for indications point to little if any reduction in price and there is unlimited satisfaction in protection against cold weather.

## Countess Finds Happiness in Running String of Laundries

By NEA Service  
LONDON, Aug. 2.—Call it reaction from the war, if you will, but the fact remains that British women, bred to court atmosphere, are finding it difficult to go "back to the old way of living."

One of the nobility who "felt that way" is the beautiful Countess of Clonmell, wife of an Irish peer.

During the war she was active in relief work. She worked hard, and when the armistice came and court life settled back she grew restless, she says.

She wanted to be a business woman. In the world of facts and figures, she felt, she could find true happiness.

And so the countess started, aristocracy by opening a laundry in the fashionable Mayfair district. She called her establishment "The White Elephant." Perhaps she felt it would prove such.



COUNTRESS OF CLONMELL

## PIPELESS FURNACE ANSWERS DEMAND

New System Is Recommended by Daufel Brothers.

In this climate, varying from the very severe cold weather in the coldest part of the winter to the chilly, damp, penetrating days that are much a part of our winter season, the question of the proper kind of heating plant is one of primary importance.

Daufel Brothers, 1133 Hoefgen St., carrying the Sunbeam pipe and pipeless furnaces have found they answer in a very practical and satisfactory way this question of proper heating.

Built so they will furnish the right amount of heat for comfort, supplying at the same time plenty of pure, fresh air, with just the proper amount of moisture, they seem to furnish an ideal heat at a surprisingly low upkeep, due to the small amount of coal they consume. Each customer is carefully advised as to just what type and size of furnace he needs for adequate heating of his house, so there is no guesswork involved, providing a scientifically planned installation.

This firm also makes a specialty of all kinds of sheet metal work, giving every bit of work turned out the same careful attention. In addition, the firm is adequately prepared to take care of all kinds of furnace repair and are urging people to have their furnaces inspected now, for a very little attention just now will, in many instances, save a lot of time, energy and money, to say nothing of inconvenience at the beginning of the cold weather.

Special attention should be given to the pipes of the furnace to see that they are properly covered, for at least 10 per cent of the heat is lost if the pipes are not covered or if the covering is badly worn.