

## CURB FIRM FAILS WITH LIABILITIES OF ELEVEN MILLION

Knauth, Neachod & Kuhne  
Close Doors on New York  
Stock Exchange.

By United Press  
NEW YORK, June 17.—Almost coincident with a new policy on the part of the New York stock market and the New York curb that all would be told if legal authorities requested information regarding activities in the Street, came the announcement this a. m. from the rostrum of the stock exchange of the failure of the big firm of Knauth, Neachod & Kuhne. The firm consists of Rollin C. Newton, a member on the floor of the exchange; Mrs. Mary I. W. Knauth, Oscar L. Gubelman and James F. Shaw.

"We will, of course, cooperate with the receiver in every way."

An involuntary petition in bankruptcy has been filed in the United States District Court against the firm. It was brought out in the bankruptcy petition the firm has liabilities of \$11,000,000.

The firm was admitted to the exchange on March 28, 1895.

## TAX BOARD SCORED BY VIGO CITIZENS

Rejection of Bond Issues  
Causes Strong Protest.

Sharp criticism of State tax board methods in handling bond issues, was voiced today when fifteen Terre Haute and Vigo County citizens carried grievances to Governor McCray.

McCray summoned members of the State board, and with the group thrashed out difficulties arising from the board's alleged repeated rejection of Vigo County improvement petitions.

Frank Crawford, Terre Haute attorney, representing the citizens, said the board had not approved a road bond issue during the administration of McCray.

John J. Brown, Phillip Zoercher and William Hough, members of the board, defended rejection of the issues on the ground they were excessive.

## 'MYSTERY' TEAM CAPTURES PRIZES

The "mystery" team, composed of five boy bicyclists, carried off first prizes today in the first annual bicycle sweepstakes on the Meridian and Twenty-Eighth St. dirt oval at the terrific pace of 16.89 miles per hour average for the twenty-five miles. "Spark Plug" team, composed of two riders, was second; "Packard" team, four riders, third; "H. C. S." team of three, fourth, and "Durant" team of three, fifth.

Jack Craig, 2740 N. Pennsylvania St., originator and builder of the track, started when F. A. Vogelsang, 2740 N. Pennsylvania St. gave the signal and was the pilot at the finish for the winning team, which at one time led the track by twenty laps. Others in the team: William Rader, 3746 N. Pennsylvania St.; Robert Reaser, 3115 N. Delaware St.; Braxton Jeffries, 3027 N. Pennsylvania St., and Otto Eisenlohr, 2720 N. Meridian St.

## OFFICER MAY RECOVER

Jesse Louden, 49, of 109 Palmer St., motorpoliceman, who was shot early Thursday when he cornered a colored burglar in a hallway at Sixteenth St. and Central Ave., may recover, physicians at the Methodist Hospital said today.

Police are continuing to round up suspects.

## Driver Held After Crash.

Following collision with a concrete safety zone at Massachusetts Ave. and New Jersey St., Harry V. Moreland, 24, of 2867 Indianapolis Ave., was under arrest today charged with operating a motor vehicle while under the influence of liquor and drunkenness. Lieut. Anderson found Moreland's automobile wrecked and the safety zone guard knocked twelve feet.

## Blind Tiger Charges Made

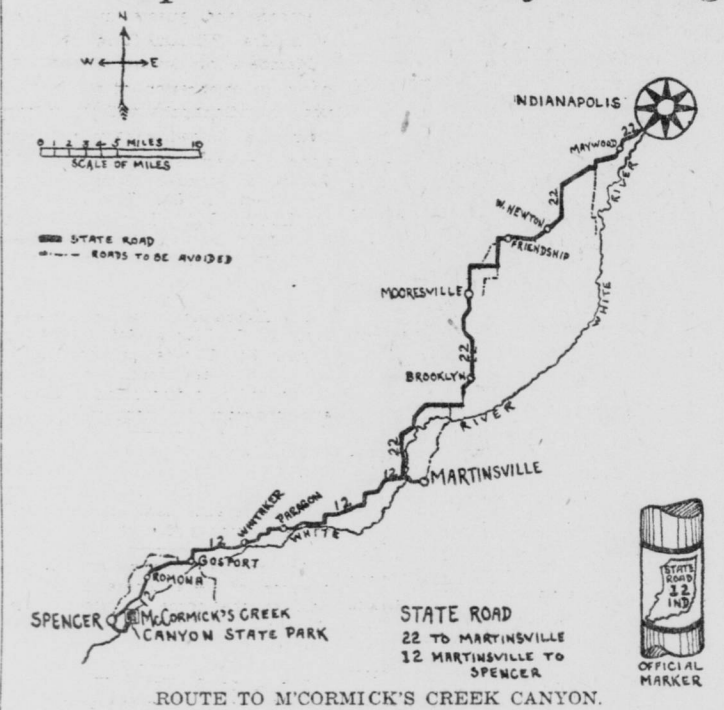
A night rider squad in charge of Sergeant Sheehan arrested Frank Farmer, 39, of 620 Marion Ave., Raymond Hunt, 25, of 1310 S. Sheffield Ave., on the charges of operating a blind tiger, at 2 a. m. today they found the men in an automobile at River Ave. and Ray Sts. In the automobile police found a part of a whisky still, an empty gallon jug. Farmer had a sawed off shot gun.

## Alleged Bandits Held

By Times Special  
GOSHEN, Ind., June 16.—Police today were holding James Atclause, 20, and James Oliver, 21, of Pittsburgh, Pa., on a charge of automobile theft. According to police the stolen machine was the property of Patrick Atclause, Lima, Ohio, father of one of the men held. Atclause has not been seen since he became estranged several years ago, police said.

**Take CARDUI**  
The Woman's Tonic

## Auto Trip to State Park Near Spencer Is Ideal Day's Outing



Of the many ideal one-day auto trips in Indiana, one of the finest is that to the McCormick's Creek Canyon State Park, three miles out of Spencer. Try this one Sunday.

This park has all the charm of natural landscape. The present

## VISITING MINISTERS WILL PREACH HERE

Pulpits in Colored Churches  
Occupied by Delegates.

Pulpits of local colored churches of the city will be filled Sunday by ministers who have been attending the eighteenth annual session of the Sunday School Congress at the Mt. Paran Baptist Church.

The congress will conduct a model Sunday school at the Mt. Paran Church from 9:30 to 11:30 a. m. Sunday. At 11:30 a. m. the Sunday School Congress will be preached at Mt. Paran Church.

At 2:30 p. m. the Sunday School Congress parade will be held, terminating at Tomlinson Hall with a mass meeting.

Today's sessions were devoted to discussion of advanced Sunday school methods and departmental meetings. Tonight will be observed as A. F. Cadet night. The congress will close Sunday night.

## Raiding Saves Women

By Times Special  
VABASH, Ind., June 16.—Iron raiding on a bridge prevented the automobile driven by Mrs. John Jester, Peru, which overturned, from plunging ten feet into a creek below. Mrs. Jester and her companion, Mrs. T. C. Stinemann, were cut and bruised.

**PINOLA**  
for COLDS and COUGHS

If YOU have a cough, cold, sore throat, bronchitis or cold in the chest, PINOLA will bring you quick relief. Take Pinola in teaspoonful doses. Your health and life will be no longer in danger. Begin using Pinola right now.

At your druggist

**FIGURE THIS OUT**  
IF you are constipated—AND have not found relief—NOR permanent cure—

**TAKE VIUNA TONIC**  
The Vegetable Builder

Its mild and yet complete action, often resulting in permanent relief will be a pleasant revelation to you.

AT YOUR DRUGGIST  
Constipation is the cause of many an ill.

**Catarrh Asthma Hay Fever**  
A Home Treatment That Cured Thousands of Sufferers Last Year.

If you suffer with chronic catarrh of the head, stomach and bowels, nasty, disagreeable, embarrassing and dangerous hacking and spitting, continuous, annoying dropping mucus in the throat; clogged up head, ears and nostrils; asthma or hay fever; no matter how severe or long standing; chronic cough or bronchitis; frequent severe colds; chronic catarrhal indigestion and constipation; catarrhal deafness and head aches; or any old "run down," "dead tired" condition due to chronic catarrh, call in person or write for full particulars about our New Method home treatment, which cured thousands of people last year.

This treatment is sold on trial basis only. Use it two weeks and if not satisfied it costs you nothing. You be the judge. Send no money. Write today for free advice.

Hundreds of local references to home people cured, whom you can talk to, can and will be given.

Call in person, write or mail the coupon below:

The Indiana Catarrh Institute,  
1436 North Illinois St.,  
Indianapolis, Ind.

Dear Sirs—Please mail to me in plain wrapper full particulars about your method, local references to cured people and your TRIAL REFUND GUARANTEE PROPOSITION.

Name.....  
R. F. D. or Street Number.....  
Town.....  
State.....

**Take CARDUI**  
The Woman's Tonic

## JOHN M'PARLAND, HEAD OF I. T. U., SUCCUMBS HERE

Labor Leader Active Over  
World in Interests of  
Trade Unions.

John McParland, president of the International Typographical Union, and a leader in union circles of two hemispheres, died at 5:20 a. m. today at St. Vincent's Hospital, where he had been for two weeks. Death was due to a complication of diseases.

The body will lie in state at the Reynolds chapel, 950 N. Pennsylvania St., from 10 a. m. to 4 p. m. and from 7 to 9 p. m. Sunday. It will be taken to Grand Rapids, Mich., for burial Tuesday.

Mr. McParland lived at 4133 College Ave. Becoming ill at Binghamton, N. Y., on May 2, Mr. McParland was brought here May 9.

Charles C. Howard, Detroit, first vice president, automatically succeeds to the presidency.

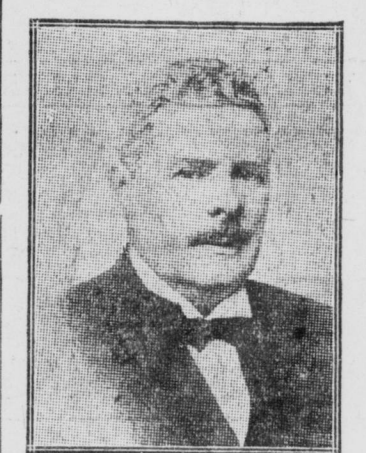
Mr. McParland had been elected president of the International Typographical Union twice. He was born in Talbot, Australia, Jan. 6, 1864. He served his apprenticeship in the printing trade in Ballarat, joining the Typographical Union at Newcastle, New South Wales, in 1885. Two years later he came to the United States and deposited his union card with Typographical Union No. 16 in Chicago, where he remained twelve years and gained prominence as a union leader.

Became a citizen in 1898. In 1902, Mr. McParland was elected to the Detroit convention at which he became a candidate for vice president.

Neighbors Help Widow

By Times Special  
CRAWFORDSVILLE, Ind., June 16.—Mrs. Dudley Hutchison, widow of a farmer who died recently, today is thankful for the kind of neighbors she has. With seventeen teams, neighbor men planted corn for her. Every home in the neighborhood was represented.

## President of Typos Is Called by Death



JOHN M'PARLAND

the Detroit convention at which he became a candidate for vice president.

Mr. McParland was the first president of the Illinois State Typographical Union, serving two terms. He negotiated and executed the first contract underwritten by the International Union, and also the first blanket contract embracing all trades engaged in the production of a daily newspaper.

**Fought for Eight-Hour Day**  
In 1902, Mr. McParland took a prominent part in the campaign for the eight-hour day in the printing trade.

He was elected international president in 1920 and re-elected in 1922. Surviving is one son, John McParland Jr., of Grand Rapids, Mich.

## Neighbors Help Widow

By Times Special  
CRAWFORDSVILLE, Ind., June 16.—Mrs. Dudley Hutchison, widow of a farmer who died recently, today is thankful for the kind of neighbors she has. With seventeen teams, neighbor men planted corn for her. Every home in the neighborhood was represented.

## PUSHMOBILE KINGS READY FOR START

Stage Is Set for Grilling Contests Today.

With the pavement repaired and cleaned and skies clear, all was in readiness today for the fifth annual pushmobile race on Linwood Ave.

Twenty starters were ready for the opening parade over the 220-yard course at 2:30 this afternoon. Three preliminary heats will be run, a girls' running race, an "ice wagon special" for losers of the three heats and a final for the two cars that place first in each preliminary.

The gold, silver and bronze medals awarded by The Times will be presented to the winners of first, second and third place in the final heat.

Favorite among the entries are the "Mount Jackson Special," a flaming yellow car from the west side, which

**Two Recitals**  
FRANCOIS CAPOULLIEZ  
Basso Caribante  
LILLIAN PRINGLE,  
Cellist  
EDITH GYLLENBERG,  
Pianist

**Riley Room**  
Claypool Hotel,  
Indianapolis, Ind.

**Benefit of**  
American War Mothers  
(Marion County Chapter)

**Monday and Tuesday, June 18-19, 1923—8:15 P. M.**

## 300 CANS OF MILK REALIZED IN SHOW

ESCAPE IS BLOCKED

Prisoner Leaps For Liberty As Storm Stirs Court.

Frank Badgley, 30, of 211 Cable St., convicted Friday in Criminal Court of automobile stealing, was locked in the Marion County jail today awaiting removal to the Indiana State reformatory. He was captured following attempt to escape from the courtroom.

A flash of lightning and a sharp clap of thunder caused Miss Birdie Billman, deputy county clerk, to run from the room late Friday. Badgley sitting in the jury box, say eyes turned in her direction, and huddled a three-foot bar in a dash for the door. "Stop that man!" yelled bailiff and policemen in unison, but spectators sat dumfounded.

Badgley was stopped in the corridor by Sgt. John Rietter with a blow with a black jack on the head.

Much wool for carpet making is imported from the orient.

'Proceeds' at Ohio Theater to  
Relieve Bible Lands.

More than 300 cans of milk were collected at the special showing of "A Front Page Story" at the Ohio Theater today. The milk will be used by the Near East Relief.

Picture and theater were donated. Admission was a can of milk. The "Save-a-Baby" week of the Indianapolis Advertising Club, which sponsored the special show, includes a ceremony on the Monument at 7:30 this evening.

## Gone More Than Month

Local police today were asked to search for Frederic W. Brewer, 32, of Dayton, Ohio, who left that city May 8.

## How About Your Mental Vision?

The man who can look no farther than the present is mentally blind; the man who can plan for the future has his eyes open, and ready to grasp opportunities as they come. Let this STRONG COMPANY—the oldest in Indiana—help you save for the future. Your savings welcomed.

**The Indiana Trust COMPANY FOR SAVINGS**  
CAPITAL SURPLUS \$2,000,000  
OPEN SATURDAY EVENINGS 6 TO 8 O'CLOCK

MAKE A START NOW  
"Out 38th Street Way"  
For a Permanent "ASSURED FUTURE" Buy a Home Site in Restricted

# SHADELAND PARK

One Square North of 38th Street Boulevard on Pendleton Pike. High Above the City. Sixty-Foot Frontages and Larger in a district Heavily Restricted.

Sale Begins Today (Saturday) and Tomorrow (Sunday) and Continues Daily Until Sold

Come out today or as early tomorrow as possible and see the development out "38th Street way" and the trend of Indianapolis's growth north-eastwardly. See Shadeland Park with its broad, spacious, fertile tracts,

and carefully note the restrictions—30-foot building line, cost of houses, colored clause, one house to the lot, no doubles, duplexes, filling stations or any kind of business. That's your protection.

Only 116 Tracts in This Beautiful Restricted Addition. They Will Be Snapped Up Quickly at These

**PRICES AND EASY TERMS**  
Prices: \$290, \$325, \$350, \$400 and Up

### TERMS

\$10 down secures a tract—then \$1.50 to \$2 weekly. Or \$6 to \$8 monthly. Free carrying charge by the Fletcher Savings & Trust Company, Trustee—meaning no taxes to pay until 1926 and no interest for one year.

### SHADELAND PARK "RESTRICTED"

The Indianapolis Planning Commission has approved the plat and the restrictions of this choice subdivision of 116 tracts. Shade trees and ornamental shrubbery have been artistically set out along the wide driveways. Improved Pendleton Pike and Shadeland Road have been platted ninety feet wide. Brick columns form an attractive entrance off the cement highway. Good school and churches are near by. Fort Harrison car passes and stops at addition. Also bus service on regular schedules. Many beautiful homes are in the proximity. Shadeland Park lies directly in the path of the city's most rapid expansion northeastwardly, alongside of an improved artery, Pendleton Pike, which leads straight into the center of the city. Cities follow out their main thoroughfares. This accounts for the wonderful development of this northeast section.

### OUT 38TH STREET WAY

Note especially the clean cut, high grade surroundings of this addition. The same opportunities await you as were visioned by present home owners, in high grade districts through which you reach this addition. In keeping with this opportunity we have platted exceptionally wide lots, and consequently there are few of them. Buy now and build for the future.

### DISCOUNTS

10% off for cash. If you pay \$10 cash, a credit of double (\$20) will be given you immediately by the Fletcher Savings & Trust Company. A double credit will be allowed on cash payments of \$10 to \$25. A \$10 cash payment means a \$20 credit on your purchase. A \$25 cash payment credits you with \$50.

### RESTRICTION MEANS PROTECTION

To attract the discriminating and particular Home Builders, to establish and maintain a distinctive residence district, SHADELAND PARK has been duly protected by restrictions that will absolutely guarantee its exclusiveness.

A building line of 30 feet has been established. Each tract has been platted for one residence, thus insuring future residents against the crowding of homes.

A minimum cost has been placed on all residences to be built. Duplexes and doubles will not be permitted.

Gasoline filling stations, public garages, and all other forms of business have been barred.

With these safeguarding restrictions, SHADELAND PARK offers 116 most attractive home sites, well within the reach of the average home seeker.

**JOHN W. ROBBINS, Realtor**

ESTABLISHED 1898  
SALES AGENT—506 Lombard Bldg. Main 3006  
24½ East Washington St.

**The Fletcher Savings & Trust Co., Trustee**  
This strong, financial Trust Company signs all contracts, supervises all arrangements, executes your deed and fully protects your interests.

### CONTRACTS

All contracts and deeds executed by The Fletcher Savings & Trust Company, Trustee. Free abstracts. You have the privilege of selling your lot at any time before it is paid for.

### TO REACH SHADELAND PARK

By Auto—North on any street to 38th Street Boulevard, thence east on 38th Street until you reach Pendleton Pike, then one square north to Shadeland Park.

Or "as the crow flies," drive out the Pendleton Pike to the addition.

By Car Line—Take Ft. Harrison car to Shadeland Crossing and get off at the corner of Shadeland Park.

By Bus Line—Ft. Harrison bus and get off at the stop in the addition.

### DOUBLE YOUR MONEY

The Salesman will have instructions to double your first payment up to \$25.

### BE AN EARLY GUEST

And bring your friends to see Shadeland Park.

### EXAMPLE

\$10 down credits \$20 on tract  
\$15 down credits \$30 on tract  
\$25 down credits \$50 on tract

Ask about prices and terms for additional allowances.