

Will Rogers Plays Ichabod Crane in "The Legend of Sleepy Hollow"

Will Rogers will be Ichabod Crane, the lanky Yankee schoolmaster in a movie adaptation of Irving's "Sleepy Hollow."

Just why movie producers have overlooked this story for movie use is hard to understand. "The Legend of Sleepy Hollow" is one of the best known works in literature. Every school child has to digest it, whether he thinks he is going to like it or not.

Lois Meredith has been engaged to play the role of Katharine Van Tassel, belle of Sleepy Hollow. Ben Hendricks, Jr., will be seen as Brom Bones, Nemesis of Ichabod. Others will include May Day, Bernard Reinold, Downing Clarke, Robert Ayerton, George Pelzer, Charles Graham, Marie Trudeau, Ann Eggleston and many others.

August Release Announced.
Marie Corelli some time ago wrote "The Young Diana."

It has been made into a movie by Cosmopolitan Productions with Marian Davies in the role of Diana May. Diana is first seen as a young girl radiant in her youth and beauty. Then a great disappointment comes into her life. Twenty years pass and she appears wan, spiritless, drawn, drab and slouchy. A chemist thinks he has discovered a chemical which will restore youth and beauty. He tries it on Diana.

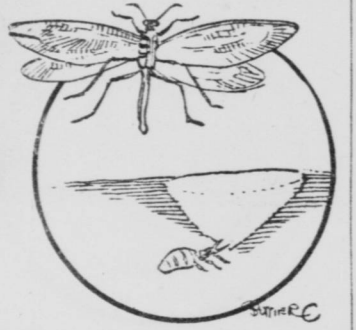
Well, it isn't difficult to make a woman like Marian Davies pretty. The chemical is a success.

On View Today.
The following attractions are on view today: "Here Comes the Bride," with Elizabeth Patterson, at the Murrat; "The Syncope Hotel," at the Lyric; musical comedy and movies at the Rialto; "The Ordeal," at the Apollo; "Rockless Chances," at the Isis; "A Question of Honor," at the Circle; "A Poor Relation," at Mister Smith's; "The Sea Lion," at the Colonial; and "The Timber Queen," at the Regent.

Ant Lions Are Ferocious and Mean Insects

By PROF. M. J. ELROD,
Chair of Biology, University of Montana.
Ant lions are insects. They bear no relation to lions in structure or appearance, but have habits very similar.

The term is applied to the young insects. The adults are very much like dragonflies in appearance, with long bodies and delicate gauzy wings. They are rather poor fliers and are easily captured. The young are wholly unlike the adults. They very much resemble a soft young potato beetle. They live in sandy places, generally about rivers and lakes. The young villain crawls under the sand flips his head, tosses the sand upward and backward, making a little



pit at the bottom of which he lies in wait for prey. His body is covered, only his large jaws extending into the pit. Along comes a luckless ant, dragging a heavy load, and topples into the hole. The ant scrambles desperately to get out, but by vigorous jerks of the head Mr. Lion throws sand and keeps him falling. Woe to the ant when the ferocious jaws are reached. They close in a death grip, and all is over for the ant. The same fate awaits a beetle or other insect that may fall into the pit.

The ant lion "plays possum." It takes an expert to find him in his lair, for he feigns death, and cannot be distinguished from a dozen little stones. But wherever pits are seen in the sand there ant lions may be found. It takes keen eyes and skill to get them, so well protected are they by color and surroundings.

PRIZES FOR ARTISTS

Riley Memorial Association to Select Best Posters.

Many State artists have taken keen interest in the poster contest of the James Whitcomb Riley Memorial Association in connection with the campaign for raising \$2,000,000 building fund for the hospital.

Prizes of \$150 and three original paintings by famous artists will be awarded the winners.

Announcement also has been made of a \$10,000 contribution to the building fund from William H. Block.

Chamber of Commerce Grows

The membership of the Indianapolis Chamber of Commerce is growing. Among business firms and persons who recently have joined are Charles A. McKeand, Roy E. Gildwell, Permalife Storage Battery Company, R. L. Hill, Burton Theatrical Booking Office, Atlas Sand and Gravel Company, Stewart W. Ruch, Advertisers' Press, F. E. Jones Realty Company, and Frank H. St. Sighoff.

"A Poor Relation"



WILL ROGERS.

Will looks like an undertaker in this movie, eh? Well, he isn't. He is just poor relation in "A Poor Relation," now at Mister Smith's. He is making a real movie, which is a screen adaptation of "The Legend of Sleepy Hollow."

BUILDING PERMITS

General Finance Corporation, dwelling, 46 Hawthorne Lane, \$5,000.
General Finance Corporation, dwelling, 50 Hawthorne Lane, \$5,000.
General Finance Corporation, dwelling, 54 Hawthorne Lane, \$5,000.
Guthrie-Thompson Company, dwelling, 1001 W. Thirty-Fourth, \$3,500.
Guthrie-Thompson Company, dwelling, 1003 West Thirty-Fourth, \$4,500.
Guthrie-Thompson Company, dwelling, 1101 West Thirty-Fourth, \$4,500.
R. O. Gildwell, dwelling, 130 North Sheffield, \$4,700.
Richard Cordell, double, 2053 Katherine, \$3,500.
Charles Brandt, double, 330 North Dearborn, \$3,500.
Charles R. Yoke, dwelling, 5114 Carrollton, \$3,500.
County Investment Company, dwelling, 1114 Bancroft, \$3,400.
S. A. Shenacker, dwelling, 4075 Winthrop, \$3,500.
Roy E. Shirley, dwelling, 1638 East Southern, \$1,500.
Margaret J. Shiras, garage, 3038 Park, \$350.
R. G. Slagle, garage, 131 West Twenty-Seventh, \$800.
Joe-Kuhn Lumber Company, dwelling, 3408 Guilford, \$7,000.
Harry Robinson, double, 418 Southeastern, \$2,000.
W. B. Wood, dwelling, 1818 Dawson, \$1,900.
Joseph L. Start, dwelling, 47 South Chester, \$2,000.
Harry R. Kruse, addition, 1317 McLean, \$620.
Anna J. Grafton, re-roof, 2211 Broadway, \$325.
William T. Fletcher, re-roof, 1833 North Alabama, \$300.
William F. Koss, dwelling, 424 Graceland, \$4,000.
Clarence J. Braun, addition, 4426 E. Twenty-First, \$250.
Lewis J. Firestone, garage, 317 N. Bernard, \$175.
Ernest N. Davis, porch, 151 W. Twenty-Six, \$1,250.
The Washington Company, dwelling, 4611 Guilford, \$400.
Georgia Saddy, addition, 432 Orange, \$4,000.
William Waddell, garage, 2007 College, \$125.
C. E. Baker, addition, 1344 Keating, \$600.
O. P. McMahon, dwelling, 642 E. Twentieth, \$3,000.

GIRLS! LEMONS WHITEN SKIN AND BLEACH FRECKLES

Squeeze the juice of two lemons into a bottle containing three of Orchard White, which will store will supply for a few cents, shake well, and you have a quarter pint of harmless and delightful lemon bleach. Massage this sweetly fragrant lotion into the face, neck, arms and hands each day, then shortly note the beauty and whiteness of your skin.

Famous stage beauties use this lemon lotion to bleach and bring that soft, clear, rosy-white complexion, also as a freckle, sunburn and tan bleach because it doesn't irritate.

Eyes Tired?

If your eyes are tired and overworked; if they itch, ache, burn or smart, go to any drug store and get a bottle of Bon-Opto tablets. Drop one tablet in a fourth of a glass of water and use to bathe the eyes from two to four times a day. You will be surprised at the rest, relief and comfort Bon-Opto brings.

Note: Doctors say Bon-Opto strengthens eyesight 60 per cent in a week's time in many instances.

You Can Enjoy Perfect Cleaning, Ironing and Washing With Ease and Economy By Using

Apex Electric Cleaners
Rotarex Electric Clothes Washers
Rotarex Home Double Roll Ironer

Demonstration in Your Home Without Any Obligation

THREE DAYS' FREE TRIAL

Phone Circle 7108 Today For These Labor-Saving Devices

Apex Electric Cleaner Co.
540 Century Building

DOWNSTAIRS at AYRES'

Dollar Day Again Thursday—Come Early

Men's Sports Shirts \$1 Each

A Cleanup by a Manufacturer

Oxford cloth, mercerized pongette, percales and similar fabrics, some of the shirts with tub silk collars; striped, plain white or colors, fancy stripes, light and dark designs; high grade workmanship; remarkable values.

Other Values for Men and Boys

Men's Pajamas, \$1 Suit

Two-piece regulation styles; plain tan, blue, lavender and other colors; pockets; fiber silk loop fasteners; sizes B, C, D. Also a few nightshirts at the price.

Men's Union Suits, 2 for \$1

Several styles; all summer weights; firsts and seconds included; sizes 34 to 46.

Men's Cottonade and Khaki Trousers, \$1 Pair

Excellent values; sizes up to 42 waist.

Men's Hosiery

Plain cotton, \$1 dozen.

Double sole and heel, cotton, 8 pairs for \$1.

Mercerized cotton, 6 pairs for \$1.

Plain and fancy clocked silk, 2 for \$1.

Men's Handkerchiefs, \$1 Dozen

Red and blue bandanas; fine grade.

Men's Linen Handkerchiefs, 6 for \$1

Pure linen; white; full size. Very special.

Men's Knitted and Silk Ties, Three for \$1

Containing a large number of styles; better than usual values.

Boys' Khaki Pants, Two Pairs for \$1

Ages to 16; three pockets, belt loops. Also boys' crash pants, same price.

Boys' Blouses, Two for \$1

Dark and light colors, sports and regular collars; sizes 6 to 16.

Boys' Wash Suits, Two for \$1

Made of genuine Peggy cloth, neat stripes; 2 to 8 years.

Boys' Khaki Flapper Suits, \$1 Each

Just about 100 suits at this price; two-piece, good quality.

100 Children's Overall Suits, Two for \$1

Khaki and blue; extra special at the price.



MAKING every dollar do more than its usual share—that's the function of the Downstairs Dollar Day. All sorts of merchandise—every bit dependable—is gathered together at the lowest prices we can give. The advantage comes to the discerning shopper who buys generously.

As Customary, No Phone, Mail, C. O. D. or Layaway Orders Can Be Accepted for Dollar Day Merchandise

250 Women's Hats

A Special Purchase—

Straw, straw and felt, combination cloth hats in gay colors—all exceptional values. **\$1 ea.**

For the Home—Specials

Pillowcases, 5 for \$1
Round thread pillowcases, 45x36 inches. Full bleach.

Napkins, \$1 Dozen
Mercerized damask pattern, not hemmed; 16-inch size.

100 Tablecloths, \$1 Each
58x38 inches. Mercerized cotton damask, hemstitched. LIMIT TWO TO CUSTOMER.

71 Crocheted Quilts, \$1 Each
Full size. Just a small lot.

300 Kitchen Towels, 8 for \$1
Extra quality; blue border. Size 17x35.

600 Turkish Towels, 8 for \$1
Guest size; extra heavy; full bleached.

300 Bath Towels, 2 for \$1
Jacquard pattern, heavy double thread towel; pink and blue border at ends. SECONDS.

250 Stamped Dresses, 2 for \$1

Children's dresses and aprons, made of fine tub fabrics and stamped ready for embroidery. Some of the pieces have patches, etc., ready for working.

300 Women's Novelty Handkerchiefs, \$1 Dozen

Embroidered corners, novelty weaves, and some all-linen handkerchiefs are included; all neatly hemmed.

Women's Wash Waists, \$1 Each

Cotton waists in new summer styles, trimmed with neat embroidered collars, some with ratine collars and cuffs; some have embroidered fronts. Sizes 36 to 44.

Ready Wear from \$1 to Five Dollars

Including a Startling Group of Dollar Day Values

175 Women's Dresses—at a Dollar Each

Linene sleeveless dresses, in bright colors; simple gingham, and a great number of soft light weight voile dresses in henna, blue, lavender and brown, with white dots, and in several daintily printed designs as well. Some of these have imitation lace collars, others have ribbon trimming, and some have organdy collars and cuffs; a few are soiled or damaged. 16 to 42.

41 Women's Cotton Sleeveless Dresses at \$2

These are mostly clear white, there are a few blues and greens; all of soft cotton gaberdine, with armholes and pockets piped with self or contrasting color. Big pearl buttons trim the pockets. There are scarcely two garments with identical pockets. Belted. 16 to 40.

83 Juniors' Kiltie Skirts at \$2 Each

Checks of black or brown and white, in wool, are most of the kilties, with their smart little suspender uppers. Then there are darker wools with stripes of stitching, and with very wide or very narrow belts. Plaited in wide and narrow, box, knife and inverted plaits. 6 to 14 years.

A Rack of Odds and Ends at \$3

Sleeveless dresses of flannel, prunella, tricotine, jersey and tweed; cape dresses of tweed. A few tweed suits on this rack. 16 to 40.

34 Fiber Silk Eponge Skirts, \$3

Striped or with large plaid checks in self color; large buttons. Immensely attractive. 24 to 31.

Wool School Dresses for \$5 Each

Surely—You Can Buy Them Now and Save Greatly

Five Good Styles—Typical Dollar Day Values at \$5

These are regulation navy blue wool serge dresses, such as every mother needs for her girl's school wear. They are a most unusual special purchase—far in advance of the season—and they certainly spell economy.

Separate wool serge middy, with plaited skirt.

White galatea detachable waist, with plaited wool serge skirt; silk tie.

An individual blue wool serge dress, with plaited skirt; daintily embroidered on cuffs, collar and belt. One-piece dress, plaited from a deep yoke, of wool serge; belted, with pockets.

6 to 20 years.

Women's Under Apparel at Dollar Day Prices

750 Union Suits, 4 for \$1

Fine combed yarn, tight knee, built-up shoulders. Sizes 36 to 44. SECONDS.

300 Pairs Crepe Bloomers, 3 for \$1

Reinforced, full cut; pink only.

Silk Pongee Vests and Step-Ins, \$1 Each

Natural and colors. Pure silk pongee, well tailored, neat styles. LIMIT TWO TO CUSTOMER.

300 Tailored Envelope Chemises, 3 for \$1

Fine soft muslins, novelty stitching.

300 Pairs Cotton Hose, 8 Pairs for \$1

Fine combed yarn, seamed back, reinforced toe and heel; cordovan and black; 8½ to 10.

2,000 Pairs Fiber Silk Hose, 3 Pairs for \$1

Seamed back; fashion marks; black, white, cordovan, beige, gray; 8½ to 10; SECONDS.

500 Petticoats, 2 for \$1

Cotton taffetas, lustrous satens; plain tailored styles, some with fancy ruffles; plain colors, fancy novelty shades; all full cut; all sizes; all lengths.

500 Envelope Chemises, 2 for \$1

Tailored or lace and embroidery trimmed; fine muslin.

300 Muslin Nightgowns, 2 for \$1

Samples, odd lots; full cut. Sizes 16 and 17.

300 Muslin Petticoats, 2 for \$1

Substantial quality; embroidered gounce and dust ruffle.

600 Bandeaux, 6 for \$1

Newly purchased. All kinds of fabrics; meshes, brocades, etc.; pink. Sizes 32 to 46.

180 Serpentine Crepe Kimonos, \$1 Each

Empire style, ribbon trimmed, floral designs; all sizes.

1,500 Pairs Pure Silk and Fiber Silk Hose, 2 Pairs for \$1

Specially Purchased

Three-seamed back; high-spliced heel; deep garter top; black, white, cordovan, beige, nude, suede; 8½ to 10. SECONDS.

300 New Corsets, \$1 Each

Brocade, coutil; pink or white; medium low, low, medium high bust; long and short skirt; four satin hose supporters; nonrusting fronts; 23 to 30.

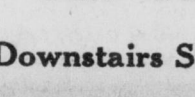
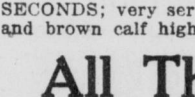
600 Women's Knit Vests, \$1 Dozen

Built-up shoulder, Swiss rib; 34 to 38 only. SECONDS.

Knit Union Suits, 2 for \$1

Pink and white; loose, tight or shell knee; built-up tubular shoulders and bodice top; 36 to 50. Open or closed style.

A Great Downstairs Dollar Shoe Sale



Women's and Girls' White Canvas Straps and Pumps

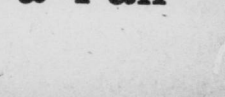
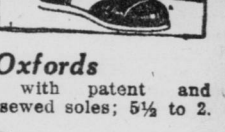
With high Cuban and low heels; for dress and evening wear. Sizes 2½ to 8; wide widths; but not every style in every size.

Women's One-Strap Slippers

Soft leather, with rubber-tipped low heels. All sizes, 2½ to 8.

Women's Boudoir Slippers

Leather or satin quilted; also black kid Pullman slippers (SECONDS); very comfortable, with attractive pompons; 2½ to 8.



For Boys—White Canvas and Brown Sports Shoes

Brown or black trimmed, with ankle guard; SECONDS; very serviceable; 11 to 6. Gunmetal and brown calf high shoes, sizes 9 to 2.

Children's Oxfords
Two-toned combinations with patent and brown apron effects; good sewed soles; 5½ to 2.

Rubber Boots
Sizes 10 to 2. Sportman or short top.

All These Shoes at a Dollar a Pair

L. S. Ayres & Co.—Downstairs Store