

3 ESCAPE DEATH

Plane 'Stunt' Actors, in Accident, Narrowly Miss Being Killed.

Three persons, members of the Lillian Boyer troupe, which performed in the Fourth of July celebration during the automobile races at the State fairground, narrowly escaped death yesterday when a ladder suspended from an airplane caught under the elongated tail of the automobile in which Miss Boyer was standing and threw the car around until it skidded off the track into the infield opposite the east end of the grandstands. Miss Boyer's act was to catch the ladder, which hung from a plane piloted by Billy Brock, as she stood in a racing automobile driven by Paul Clancy. She tried unsuccessfully six times. One the seventh trip around she caught the ladder at about the fourth round. The bottom round caught under the tail of the automobile, which was traveling at sixty-five miles an hour, and sent it crashing through the fence.

MODERN METHOD

Burglars Carry Valuables to Victim's Machine in Rear of House.

Improved burglary methods are being used in Indianapolis. The latest plan is for the burglar to rob a home, carry the loot to the garage, in the rear of the house, pack it in the automobile, and then steal the car. S. E. Berry, 1827 N. Capitol Ave., last night missed jewelry, money and other valuables. Motor Policemen Barker and Lowe found all except the money in Berry's automobile, in the garage. They believe the thief was frightened away before he could steal the car.

TRAGEDY IN SHAM BATTLE

By United News
PITTSBURGH, Kan., July 5.—Glenn Harris, 19, was killed and several others injured when a maniac, taking advantage of an American Legion sham battle, fired steel jacketed bullets at random into a crowd.

WE OWN AND OFFER
\$50,000.00

Union School Township
Porter County, Indiana

6% Tax Exempt
School Building Bonds

Dated July 1. Denomination, \$500.

MATURITIES

\$3,500.00 due July 1, 1923
3,500.00 due July 1, 1924
3,500.00 due July 1, 1925
3,500.00 due July 1, 1926
3,500.00 due July 1, 1927
3,500.00 due July 1, 1928
3,500.00 due July 1, 1929
3,500.00 due July 1, 1930
3,500.00 due July 1, 1931
3,500.00 due July 1, 1932
3,500.00 due July 1, 1933
3,500.00 due July 1, 1934
3,500.00 due July 1, 1935
4,500.00 due July 1, 1936
1,500.00 due July 1, 1937

Yielding 4.60%

Legality of this issue approved by our counsel.
Smith, Remstar, Hornbrook & Smith.

Financial Statement

Assessed valuation \$3,284,810.00
Total debt, including this issue 50,500.00

J. F. WILD & CO.
STATE BANK

"Oldest Bond House in Indiana"

A Sound Investment in Transportation



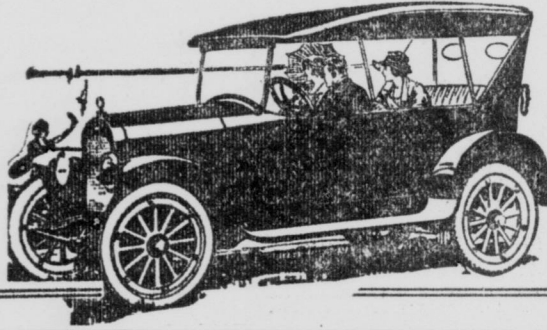
Direct From Factory **\$950** Direct From Factory

Every Monroe is sold direct from the factory. You put the middleman's profit in your pocket. That accounts for the low price of this ruggedly-built car. Monroe Service Stations that cover Indiana provide efficient local service. This service is included in the purchase price. The Monroe factory pays for it. The Monroe is a sound investment in transportation. To request descriptive literature puts you under no obligation.

205 Service Stations In Indiana

Reliable service garages and resident salesmen may find a profitable place in the MONROE organization. Write for details.

MONROE Automobile Co. Indianapolis, Ind.
Capitol at North St. Phone, MAin 1566



During July and August
Store Closes Saturdays
at 1 P. M. Other days
at 5 O'clock

THE W. H. BLOCK CO.
Hart Schaffner & Marx Guaranteed Clothes for Men, Young Men and Boys (8 to 18).

In Our Model Grocery

Exclusive Distributors for Indianapolis and Vicinity of Park & Tilford's World's Best Food Products

Choice Fresh Meats

BEEF ROAST, pound 20c
PORK ROAST, pound 20c
RIB STEAK, pound 25c
SMOKED SHOULDERS, boned and rolled, for frying or roasting, pound 27c
CREAMERY BUTTER, Sun-lit, fresh and sweet, churned from pasteurized cream, 1-pound carton 38c

Table Luxuries

Fresh from our Sun-lit kitchen—fruit and vegetable salads, pickles, relish, chow-chow, variety of cold meats, baked beans, etc., very moderately priced.

ROYAL LUNCHEON COFFEE, our own blend of the finest coffees, perfect aroma and flavor (3 pounds, 95c), pound 32c

VALENCIA ALMONDS, extra fancy, pound 59c

CERTO, sure jelly, will make your jams and jellies with one minute's boiling, 8-oz. bottle 35c

EVAPORATED PEACHES, Blue Ribbon brand, practically peeled, pound 27c

SNIDER'S CATSUP, made from red-ripe tomatoes, 16-ounce bottle 25c

CHEESE, Wisconsin full cream, pound 28c

New York cheddar, very snappy, pound 39c

SARDINES, imported, in pure olive oil, Le Grade brand, 6-ounce can 27c

GINGER ALE, Bethesda, extra dry, or Almaris, clear and sparkling; large bottle (dozen, \$3.00); bottle 27c

GRAPE JUICE, Sweet Valley, unfermented, pint bottle 36c

—Fifth Floor.

Big Scale Industry Has Made America Rich

AMERICA is the richest country in the world because of its great natural resources, and because it has utilized large-scale organizations to develop them. It has done big things in a big way. Other nations have had more workmen, cheaper labor, more densely settled areas, yet America has outstripped them all. Why? Because of "Big Industry"—vast, centralized organization.

The measure of this big-scale organization is service. The big unit is constructive—far-seeing—resourceful—permanent. It can be depended upon to provide essential commodities in times of stress.

A big organization should be judged by the service it renders.

The Standard Oil Company (Indiana) is a big organization, built squarely upon service. It has grown and prospered because of the need for its service. It is doubtful if a smaller organization could give the service rendered by this Company.

Because of its size and efficiency, the Standard Oil Company (Indiana) can manufacture on an economical scale. From one natural resource it produces hundreds of useful products at a minimum cost, thus enabling the Company to sell each of its long line of products at a lower price than would otherwise be possible.

Because of its thorough distribution service, resulting from its great volume of business, it is possible for the man living in the remote corners of the 10 Middle Western States served to get such petroleum products as he needs with facility almost equal to that of the man living in the city.

The forecast for 1922 is for a heavier demand for petroleum products than this nation has ever known. The Standard Oil Company (Indiana) has keyed its entire organization to meet this demand. Regardless of the emergencies which may arise, the Company believes that its organization will be able to meet the situation.

Standard Oil Company
(Indiana)
910 So. Michigan Ave., Chicago, Ill.

Street and Porch



Dresses

\$3.00 to \$5.00 Qualities

\$1.98

A clearance of our broken lots of women's and misses' porch and street dresses. 265 models marked for quick disposal at \$1.98.

Many attractive styles and patterns in Dotted Swiss Gingham Tissues Voile

Silk Blouses

For women and misses. Georgette and crepe de chine blouses in tie-back styles; many are combined with dainty laces. 300 models in navy, white, bisque, flesh, coral, honey-dew and jade; \$3.00 and \$4.00 qualities

\$1.98

Sport Coats

Sleeveless models made of wool jersey with narrow string belts and patch pockets. Very desirable for golf or other sports wear; \$4.00 quality, while the 60 last

\$1.98

Artificial Silk

Sweaters

\$3.00 and \$4.00 Qualities

\$1.98

We have taken broken lots of women's and misses' artificial silk sweaters that sold for \$3.00 and \$4.00 and grouped them for quick clearance at \$1.98.

200 Tuxedo and slipon models in

—HENNA —BLACK

—NAVY —JADE

Broken Lots of Corsets

For average, slight or medium heavy figures. Made of brocade, broche, coutil or batiste in flesh or white. Sizes 21 to 30; \$3.00, \$4.00 and \$5.00 qualities

\$1.98

Pure Silk Envelope Chemise

Made of heavy quality crepe de chine, cut full size; plainly tailored or lace trimmed. Special at

\$1.98

July Reduction Sale of Sheets, Cases, Sheetings

A wonderful opportunity for housekeepers, rooming house and hotel owners to save 25 to 36 per cent on bedding.

Ready-Made Sheets

BLEACHED SHEETS—Of medium weight; finished with a 3-inch hem; double bed size (no phone orders) limit of 4 to a buyer; special, each 69c

81x90 BLEACHED SHEETS—"Seamless"; made of heavy firm thread sheeting; finished with a three-inch hem; highly recommended as to laundering and wearing qualities; special \$1.10

SEAMLESS BLEACHED SHEETS—Double bed size; neatly made with deep hems; \$1.18 quality 95c

"ONEIDA" BLEACHED SHEETS—"Utica" quality—81x99-inch (doz., \$17.90), each \$1.53 81x90-inch (doz., \$16.34), each \$1.39 72x90-inch (doz., \$14.87), each \$1.27

Pillow Tubings

Irvin quality; fine linen finish—42 inches wide, yard 38¢ 40 inches wide, yard 36¢ 36 inches wide, yard 34¢

Pillowcases

HEMMED PILLOWCASES—Neatly made and finished of a smooth thread, bleached muslin; sizes 42x36 (no phone orders), special, each 18c

HEMMED PILLOWCASES—Made of soft thread, bleached muslin, free from dressing; will launder nicely—42x36-inch size, each 25¢ 40x36-inch size, each 22¢ 36x36-inch size, each 20¢

EMPIRE PILLOWCASES—Mohawk quality; 42x36-inch size (dozen, \$3.46), each 29c

ONEIDA PILLOWCASES—Utica quality; 42x36-inch size (dozen, \$3.87), each 32c

Empire Bleached Sheets, Mohawk Quality

81 x 99 - inch bleached sheets (dozen, \$18), each \$1.37 81 x 90 - inch bleached sheets (dozen, \$14.70), each \$1.25

Sheetings

UNBLEACHED SHEETING—Medium weight; firm, smooth weave; will bleach easily—2 1/2 yards wide, very special, yd. 39¢ 2 1/2 yards wide, very special, yd. 35¢ 2 1/2 yards wide, very special, yd. 30¢

"MOHAWK" UNBLEACHED SHEETING—2 1/2 yards wide, 48c "MOHAWK" UNBLEACHED SHEETING—2 1/2 yards wide, 53c

"UTICA" UNBLEACHED SHEETING—2 1/2 yards wide, 55c UNBLEACHED SHEETING—2 1/2 yards wide, 60c

BLEACHED SHEETING—2 1/2 yards wide; medium weight; will give excellent service and launder splendidly (no phone orders), special, yard 39c

"MOHAWK" BLEACHED SHEETING—2 1/2 yards wide, 53c "MOHAWK" BLEACHED SHEETING—2 1/2 yards wide, 58c

"UTICA" BLEACHED SHEETING—2 1/2 yards wide, 58c

"UTICA" BLEACHED SHEETING—2 1/2 yards wide, 63c

Genuine Palm Beach Suits

For Men and Young Men

SALE PRICE, **\$8.95**

Regulars, stouts, shorts, longs—all \$8.95.

Mohair Suits

For Men and Young Men

SALE PRICE **\$11.95**

Regulars, stouts, shorts longs—all \$11.95.

All Wool Suits

For Men and Young Men

SALE PRICE, **\$15.95**

Two Pairs Trousers Included at \$18.95

Coat, vest and two-pairs long trousers, all for \$18.95. Remember, every suit is all wool. Regulars and stouts. Plenty of sports models and tweeds.

\$5 and \$6 Men's Trousers

An Extra Pair With Your Coat and Vest

SALE PRICE **\$2.98**

Good, serviceable, all-wool fabrics, including all-wool blue serges, excellently tailored to stand hard wear. Patterns to match suits, as well as good, durable, all-wool work trousers. Sale price, \$2.98.

Genuine Palm Beach Men's Khaki Trousers \$3.85

Men's Trousers \$1.00