

## CAPITAL AND LABOR BLAMED BY JOBBARLEY

Each Held Equally at Fault for Depression and Unemployment.

### ALL IN ON PROFITEERING

WASHINGTON, Oct. 11.—President Harding's unemployment conference probably will sidestep all controversies, and bring in a final report which distributes over a wide field the blame for present widespread unemployment and economic depression.

The consensus of opinion of the various committee reports were combined today in one general report under the supervision of the steering committee. It will be submitted to the conference and probably adopted.

Capital and labor came in for equal blame under the report.

In carefully phrased language the report finds:

"It will be observed that there is an entire disproportion between the prices of primary commodities and the ultimate retail prices; these disproportionate increases in progressive stages of distribution are due to increased cost of transportation, enlarged profits, interest, taxes, labor and other charges."

The report agreed upon by the Steering Committee as embodying the consensus of opinion among the various subcommittees recommends:

1. Readjustment of railway rates on a fair basis of the relative value of commodities; and with a reduction of rates upon primary commodities, at the same time safeguarding the financial stability of the roads.

2. Speedy completion of the tax bill with its contemplated reduction in taxes in order that business now held back pending definite determination may proceed.

3. Immediate settlement or definite postponement of tariff legislation in order that business may determine its future conduct and policy.

4. Settlement of the Government's financial relationship with the railways, having in mind the immediate necessity for increased maintenance and betterments, making effective increased railway employment and stimulation of general employment in order that the railways might be prepared for enlarged business as it comes.

5. Limitation of world armament and consequent increase of tranquility and further decrease of the tax burden, not only of the United States, but of other countries.

## MRS. BURKETT'S SANITY DEALT WITH AT TRIAL

Jury May Get Case of Roosevelt Claimant Today.

NEW YORK, Oct. 11.—Testimony touching on the sanity of Mrs. Edna Richardson Burkett, along with letters alleged to have been written by her while she was in the tombs here, featured her trial today.

The woman is being tried on a charge of forgery in the name of Theodore Roosevelt to a note for \$10,000. She claims she was not the author of the note, but that it was written by her husband, who died in 1912.

Dr. Perry M. Lichenstein, Tombs physician, declared that he had observed Mrs. Burkett closely and found that she suffered from delirium tremens today.

Mrs. Burkett denied having written the letter which was introduced against her, but handwriting experts declared that she had written it. The letter was addressed to John Wright at Montezuma, Indiana.

"Jog your memory," the letter said, "of the time you were in Chicago on June 1912, and saw me turn over \$10,000 to Theodore Roosevelt and Charles Shuman and saw them sign a note in the presence of James G. Payton and Colonel Roosevelt and saw them count the money in a room near the city office."

"If you come to New York City and give your evidence, I will give you \$5,000. If you find Howard Singer and George Abidin in your gang and they will make affidavits before notaries, the questions will be sent by a judge to take them. Be careful and I will give you \$10,000 cash for it. I get the money, so get busy. Go get the other two. You know where to find them and I will pay you \$10,000 and you can pay them what you want."

A note enclosed in the letter said: "Your expenses will be only 50 cents each before a notary. It is money to make money, then selling mules and horses and it means homecoming to me with \$50,000."

The case probably will be sent to the jury today.

## FERRY BOAT IS USED IN CHASE OF A BUCK DEER

SEATTLE, Oct. 11.—Woodland Park Zoo has another distinguished inmate; distinguished because of the unique method by which it was captured.

It took a ferryboat, a lasso and several hunky men to get the best of this new member of the zoo.

A year-old buck deer had been chased off Mercer Island by dogs and, in a last desperate effort to escape, endeavored to swim across the water.

Herzog, commander of the ferry plying on the lake, started the animal when it came about midway between the island and the mainland.

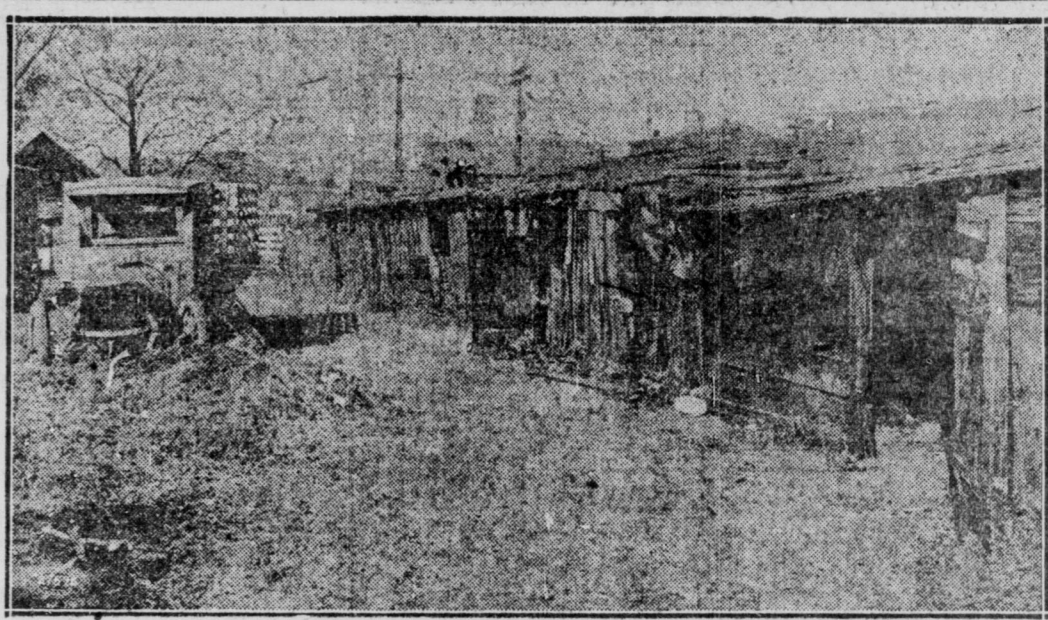
Unloading the few phlegmatic passengers who did not wish to participate in the chase, the captain pointed his craft toward the animal and the chase was on.

Although he was maneuvered his boat close beside the badly frightened deer, it took all the men aboard the boat a full ten minutes before the task was accomplished.

Arriving at the dock with the prize, the skipper and his "outfit" were met by game wardens, who took charge of the prisoner. Another fight took place when Warden Beach tried to induce the deer to take a seat in the tonneau of his automobile. He was finally subdued, and the deer had been securely tied at the zoo he was pronounced one of the finest specimens ever seen there.

The new member of the Woodland Park Zoo family has been christened "Moose" and the name "Moose" is receiving considerable attention.

## PREVENTION DRIVE WILL ELIMINATE THESE



Fire Hazards in Downtown District.

These two pictures show conditions near the downtown district, which are gradually being eliminated through the efforts of the fire-prevention division of the Indianapolis fire force. According to J. H. Hilkene, chief of the Indianapolis fire-prevention division, there were many vacant lots and back yards throughout the city where trash and rubbish had been

placed and which offered excellent opportunities for the spread of fire. The picture at the top was taken near West Pearl and Missouri streets. The lower picture was taken on Northwestern avenue near Fall Creek boulevard. In each case the owner has been ordered by an inspector to remove the accumulated rubbish from his premises.

## SENATOR SMOOT FOR SALES TAX TO GET REVENUE

Believes Plan Will Be Adopted—Creates Six Taxation Systems.

WASHINGTON, Oct. 11.—The sales tax as a basis for real and lasting revision and simplification of the present cumbersome system of taxation imposed upon the American people, by the World War, was urged upon the Senate today by Senator Reed Smoot, Republican of Utah, member of the Senate Finance Committee.

Senator Smoot's plan embodies a direct manufacturers' and producers' tax of 3 per cent. He proposed it as a substitute for the pending tax revision bill, and the Republican compromise, which is to replace it.

Although he does not anticipate that his proposal will command a majority vote, Smoot is confident that not later than next year the sales tax will be adopted as the keystone of the American tax system.

The Smoot plan calls for the creation of six main sources of revenue:

1. Manufacturers and producers' sales tax.

2. Individual income tax.

3. Corporation tax.

4. Customs duties imposed by the tariff.

5. Inheritance or estate tax.

6. Tobacco tax.

7. Excise tax.

8. Tax on the sale of land.

9. Tax on the sale of stock.

10. Tax on the sale of bonds.

11. Tax on the sale of real estate.

12. Tax on the sale of personal property.

13. Tax on the sale of intangible property.

14. Tax on the sale of franchises.

15. Tax on the sale of patents.

16. Tax on the sale of copyrights.

17. Tax on the sale of trademarks.

18. Tax on the sale of inventions.

19. Tax on the sale of discoveries.

20. Tax on the sale of improvements.

21. Tax on the sale of innovations.

22. Tax on the sale of novelties.

23. Tax on the sale of curiosities.

24. Tax on the sale of rarities.

25. Tax on the sale of oddities.

26. Tax on the sale of freaks.

27. Tax on the sale of monstrosities.

28. Tax on the sale of deformities.

29. Tax on the sale of abnormalities.

30. Tax on the sale of anomalies.

31. Tax on the sale of anomalies.

32. Tax on the sale of anomalies.

33. Tax on the sale of anomalies.

34. Tax on the sale of anomalies.

35. Tax on the sale of anomalies.

36. Tax on the sale of anomalies.

37. Tax on the sale of anomalies.

38. Tax on the sale of anomalies.

39. Tax on the sale of anomalies.

40. Tax on the sale of anomalies.

## FIFTH WARD.

Precinct.	Men.	Women.
1	447	477
2	447	477
3	447	477
4	447	477
5	447	477
6	447	477
7	447	477
8	447	477
9	447	477
10	447	477
11	447	477
12	447	477
13	447	477
14	447	477
15	447	477
16	447	477
17	447	477
18	447	477
19	447	477
20	447	477
21	447	477
22	447	477
23	447	477
24	447	477
25	447	477
26	447	477
27	447	477
28	447	477
29	447	477
30	447	477
31	447	477
32	447	477
33	447	477
34	447	477
35	447	477
36	447	477
37	447	477
38	447	477
39	447	477
40	447	477
41	447	477
42	447	477
43	447	477
44	447	477
45	447	477
46	447	477
47	447	477
48	447	477
49	447	477
50	447	477
51	447	477
52	447	477
53	447	477
54	447	477
55	447	477
56	447	477
57	447	477
58	447	477
59	447	477
60	447	477
61	447	477
62	447	477
63	447	477
64	447	477
65	447	477
66	447	477
67	447	477
68	447	477
69	447	477
70	447	477
71	447	477
72	447	477
73	447	477
74	447	477
75	447	477
76	447	477
77	447	477
78	447	477
79	447	477
80	447	477
81	447	477
82	447	477
83	447	477
84	447	477
85	447	477
86	447	477
87	447	477
88	447	477
89	447	477
90	447	477
91	447	477
92	447	477
93	447	477
94	447	477
95	447	477
96	447	477
97	447	477
98	447	477
99	447	477
100	447	477

## SIXTH WARD.

Precinct.	Men.	Women.
1	447	477
2	447	477
3	447	477
4	447	477
5	447	477
6	447	477
7	447	477
8	447	477
9	447	477
10	447	477
11	447	477
12	447	477
13	447	477
14	447	477
15	447	477
16	447	477
17	447	477
18	447	477
19	447	477
20	447	477
21	447	477
22	447	477
23	447	477
24	447	477
25	447	477
26	447	477
27	447	477
28	447	477
29	447	477
30	447	477
31	447	477
32	447	477
33	447	477
34	447	477
35	447	477
36	447	477
37	447	477
38	447	477
39	447	477
40	447	477
41	447	477
42	447	477
43	447	477
44	447	477
45	447	477
46	447	477
47	447	477
48	447	477
49	447	477
50	447	477
51	447	477
52	447	477
53	447	477
54	447	477
55	447	477
56	447	477
57	447	477
58	447	477
59	447	477
60	447	477
61	447	477
62	447	477
63	447	477
64	447	477
65	447	477
66	447	477
67	447	477
68	447	477
69	447	477
70	447	477
71	447	477
72	447	477
73	447	477
74	447	477
75	447	477
76	447	477
77	447	477
78	447	477
79	447	477
80	447	477
81	447	477
82	447	477
83	447	477
84	447	477
85	447	477
86	447	477
87	447	477
88	447	477
89	447	477
90	447	477
91	447	477
92	447	477
93	447	477
94	447	477
95	447	477
96	447	477
97	447	477
98	447	477
99	447	477
100	447	477

## SEVENTH WARD.

Precinct.	Men.	Women.
1	447	477
2	447	477
3	447	477
4	447	477
5	447	477
6	447	477
7	447	477
8	447	477
9	447	477
10	447	477
11	447	477
12	447	477