

## SALARIES SOAR TO HIGH MARK BY NEW LAWS

State's Employees, Could Form  
Fair Sized City by  
Themselves.

With the promulgation of the acts of the 1921 Legislature, creating numerous jobs, the pay roll of the State of Indiana will reach the highest point in the history of the State.

While this is generally admitted to be true, no one in the Statehouse would undertake to estimate how many employees will be included in this pay roll or how many are now on the roll of the State. Inquiry at the office of the Legislative Reference Bureau brought out the statement that so far there never has been an estimate of the number on the pay roll.

At the office of the auditor of State, through which all the pay vouchers come, employees stated they had no idea how many are on the pay roll and that they only wished they knew. They said the various State departments have been asked to submit complete pay rolls, but this has not been done and these pay rolls will not include State institutions.

The inability of the auditor's office to estimate the number on the pay roll is due to the fact that in a great many cases department heads draw vouchers and handle their own pay rolls. While it is impossible to come within many hundred in estimating the number paid by the State, it is certain these people, with their families would be sufficient to form a small city, all dependent on the taxes of the State. When to this number is added the pay rolls of the cities and the counties it becomes apparent the total with their dependents would form a considerable city in themselves. In other words, each taxpayer of the State contributes a fair share toward the support of the family of someone else who is living on the taxes. Some idea of the enormous size to

which the government of the State has grown can be had from the fact that included in the last general appropriations bill were appropriations for sixty-one departments, institutions and commissions. This does not by any means include all the departments of the State government for many special appropriations bills were enacted for the benefit of other departments.

The departments included in the last general appropriations are: School for the Blind, School for the Deaf, Central Hospital for the Insane, Eastern Hospital for the Insane, Northern Hospital for the Insane, Southern Hospital for the Insane, Southern Hospital for the Insane, Village for Epileptics, School for Feeble-minded Youth, Farm Colony for Feeble-minded, Soldiers' and Sailors' Orphans' Home, Soldiers' Home, State Sanatorium, Boys' School, Girls' School, Reformatory, State Farm, State Prison, Woman's Prison, soldiers' and sailors' monument, executive department, department of State, auditor of State, department of banking, department of insurance, treasurer of State, attorney general, Supreme Court, Appellate Court, clerk of Supreme and Appellate Courts, reporter of Su-

preme and Appellate Courts, Superior Courts, Circuit Courts, department of public instruction, library, adjutant general, bureau of public printing, department of conservation, fire marshal, livestock sanitary board, superintendent of public buildings and grounds, board of accounts, board of agriculture, board of health, board of medical registration and examination, board of pardons, board of pharmacy, board of charities, board of tax commissioners, industrial board, Nancy Hanks Lincoln burial ground commission, public library commission, public service commission, historical commission, Horticultural Society, Corn-growers' Association, cooperative crop re-

porting service, Tippecanoe battleground, board of industrial aid for the blind, joint purchasing committee. Payrolls for some of the departments are available. For instance, the highway department turned in a pay roll of 144, the public service commission, 62, the industrial board 59, the automobile department 31, the Supreme Court 15, the Appellate Court 15, the department of education 17, the tax board 21, the secretary of State 10, and so on down the line. In addition to the strictly State departments there are seventy Circuit Court judges, seventy prosecutors and nineteen Superior Court judges who receive a part of their salaries from the State.

## THIN PEOPLE NEED BITRO- PHOSPHATE

All that most weak, nervous, thin, mentally-depressed people need is ten grains of pure organic phosphate with each meal for a few weeks. That's what nerve specialists in London, Paris and New York are prescribing with wonderful results. It is a natural food for nerve and brain cells and is known to such reliable pharmacists as Haag's drug stores as Bitro-Phosphate. Because of its power to help create healthy flesh and strengthen weak nerves, much of it is being sold to people who are lacking in vitality.

CAUTION: Although Bitro-Phosphate is an excellent aid in relieving weak, nervous conditions, its use is not advised unless increased weight is desired.—Advertisement.

LOW  
RENT  
MEANS  
LOW  
PRICES

THE SQUARE DEAL STORE  
**PEOPLE'S**  
FRIEND CLOTHING CO.  
434-436 W. WASHINGTON ST.

IT'S  
EASY  
TO  
PAY  
OUR  
WAY

## CREDIT YES, THE REAL CONVENIENT KIND AT THE PEOPLE'S

Hundreds of your friends buy their clothes on our dignified, no red tape "Charge Account" plan. Why not you? Your credit is good here, so use it now.

**\$1 or \$2 a Week Pays the Bill**

Ladies' Suits	... \$20 Up
Ladies' Dresses	... \$15 Up
Ladies' Coats	... \$18 Up
Ladies' Skirts	... \$5 Up
Ladies' Waists	... \$5 Up
Ladies' Sweaters	... \$5 Up
MEN'S AND YOUNG MEN'S SUITS	
Trousers	... \$4 to \$12
Boys' Suits	... \$8 to \$18

**Nineteen Years of Square  
Dealing in This Location**

OPEN  
UNTIL  
9:30  
P. M.  
ON SAT-  
URDAYS

THE SQUARE DEAL STORE  
**PEOPLE'S**  
FRIEND CLOTHING CO.  
434-436 W. WASHINGTON ST.

PAY  
A  
LITTLE  
EACH  
WEEK.

## BALDWIN JUNE Columbia Grafonola SPECIAL

Six  
Extra  
Records

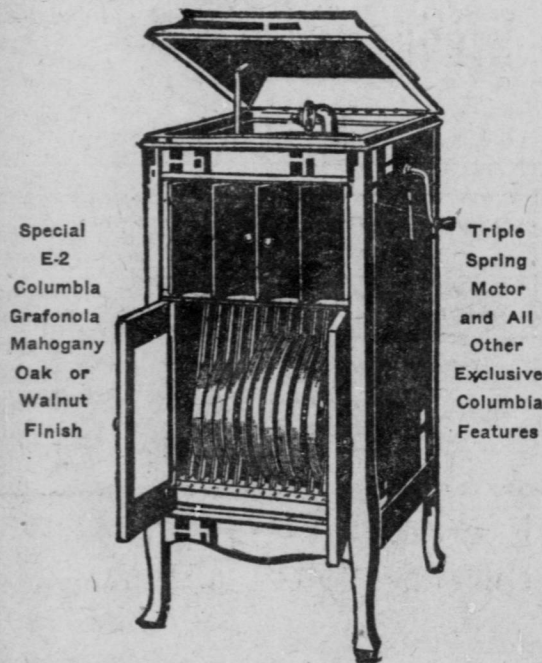
Twenty selections (10 double records) on delivery, and a new record every month for six months. All your own choice.

ALL INCLUDED

Without increasing your payments in any way.

**\$98.60**

Complete, Records and All



Our Terms Very Convenient

The **Baldwin** Piano Co.  
OF INDIANA  
18 N. Pennsylvania St.

## LOW RATE VACATION TOURS

VIA

Terre Haute, Indianapolis & Eastern Traction Co.  
CLEVELAND & BUFFALO TRANSIT COMPANY  
LAKE SHORE ELECTRIC RAILWAY  
CANADA STEAMSHIP LINES  
WHITE STAR LINE STR.

## INDIANAPOLIS

TO

NIAGARA FALLS, N.Y. TORONTO, ONT. DETROIT, Mich.  
BUFFALO, N.Y. LEWISTON CLEVELAND, O.  
CEDAR POINT, O. ST. CLAIR FLATS PUT-IN-BAY, O.  
PORT HURON, Mich. TASHMOO PARK TOLEDO, O.

Special 15-day return limit excursions to Niagara Falls and Toronto, June 5th, 10th, July 3d, 17th and 31st.  
Tourist Rates on sale every day, commencing June 7th. Final return limit Sept. 5th and Oct. 15th.  
Tickets accepted on the great ship "SEABREE" between Cleveland and Buffalo.  
Circular giving full information, including fares, etc., can be secured by calling on Joint Ticket Agent, or address Traffic Department, 208 Terminal Bldg., Indianapolis. Phone Main 777.

HAVE A LOOK 100,000 ROLLS! HAVE A LOOK DELAWARE 210-212 NORTH

## WALL PAPER

BED AND LIVING ROOM <b>3<sup>3</sup>/<sub>4</sub>¢</b> PER ROLL Paper a Room for \$1.45, side and border, 12x 14 feet.	ONE CENT Right Re-served to Limit All Factors to One Room 10 Rolls, 24 Yards. 210-212 N. Delaware	PARLOR <b>5¢</b> PER ROLL Paper a Room for \$1.90, side and border, 12x 14 feet.
---	---	---

ATTENTION!  
We require patrons to purchase 8 yards of border at 5¢ per yard with every 3 rolls of side wall, priced from 1¢ to 15¢ per roll.

<b>12<sup>1</sup>/<sub>2</sub>¢</b> Per Roll OAT MEALS NO REMNANT LOTS	<b>6<sup>1</sup>/<sub>2</sub>¢</b> Independent CEILINGS NO REMNANT LOTS
--	---

FREE—SAMPLE BOOK MAILED—FREE  
Write or Telephone 70 Designs and Colorings—Mail Order Dept.: 1826-30 Race St., Cincinnati, Ohio.

HAVE A LOOK

HEADQUARTERS  
OTHER CITIES:  
COVINGTON, Ky.  
HAMILTON, O.  
DAYTON, O.  
CINCINNATI, O.  
LOUISVILLE, Ky.

**MARTIN ROSENBERGER**  
"THE WALL PAPER KING"  
INDIANAPOLIS HEADQUARTERS  
210-212 N. Delaware St.  
CLOSE EVENINGS 6 P. M.

## EXCURSION NEXT SUNDAY

Via L. E. & W. R. R. to

MICHIGAN CITY (Lake Michigan) - \$3.25  
WALKERTON (Keweenaw Lake) - \$2.95  
ROCHESTER (Lake Manitou) - \$2.55

ROUNDTrip—Including War Tax  
VISIT INDIANA'S POPULAR SUMMER RESORTS  
Train leaves Indianapolis Union Depot 6:30 A. M.; Massachusetts Ave. 6:38 A. M.

## EXCURSIONS EVERY SUNDAY

VIA C. I. & W.

Decatur, Ill. \$3.00 Bloomington, Ind. \$1.50 Round trip  
Marshall, Ind. \$1.40 Montezuma, Ind. \$1.75 Including tax  
Visit Indiana State Park—(Turkey Run)  
Special Train Leaves Union Station Next Sunday 7:00 A. M.



EACH DAY  
A Dime  
Buy on  
Time.

PAY  
10c a Day  
Out of Your  
Pay

## Special Terms Sale

—WEAR A—  
**WM. McKINLEY**



17-Jewel Hampden Movement.  
Adjusted to Heat and Cold.  
This watch is cased in a 20-year guaranteed case. This watch will give a lifetime of service.  
**Pay 10c a Day**

—WEAR A—  
**RITE—RUBY**

Noted for their brilliancy and fire. The mountings are 10-kt. and 14-kt. solid gold. Every one wants a fine ruby ring and now is your chance to own one and

**Pay 10c a Day**

Open  
Satur-  
day  
Nights

(WRIGHT'S)  
**RITE'S**  
SQUARE-DEAL JEWELRY SHOP  
43-45 SOUTH ILLINOIS ST.

Open  
Satur-  
day  
Nights

## Avoid the Heat This Summer

Choose Your Oil Range From the **RED STAR** Family  
A SMALL PAYMENT DOWN DELIVERS YOUR

**RED STAR**  
Detroit Vapor Oil Stove

Makes Gas from Kerosene. No other range like it. It is absolutely the only Wickless Range Made.

**No Wicks—No Asbestos Rings**

Nothing to burn or wear out.

**Works Like Gas—Hot as Gas**

19 to 25 hours of cooking guaranteed from each gallon of fuel used.

**No Smoke—No Odor**

Red Star turns the kerosene into clean dry gas immediately, eliminating all smoke and odor, and still

**Costs No More Than Ordinary Oil Stoves**

Come in. Let us demonstrate Red Star for you.

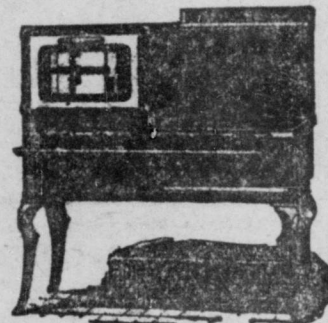
YOUR OLD OIL STOVE TAKEN AS PART PAYMENT

"Our Location  
Keeps  
Quality Up  
and  
Prices Down"

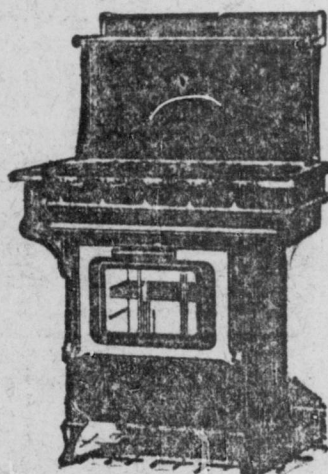
**HOOSIER**  
Outfitting Co.

443 and 445 East Washington Street

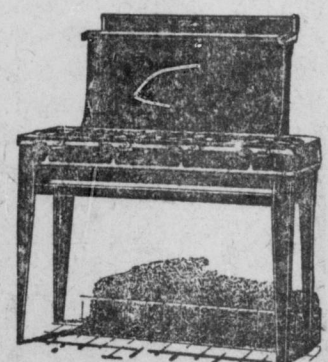
Closing  
Hour  
6 P. M.  
Daily



6 BURNER MODEL  
4 for Cooking—2 for Oven



5 BURNER  
3 for Cooking—2 for Oven



4-Burner Model  
Also Made in 3 and  
2-Burner Style.