

**AIRBANKS GIFT
ACCEPTED BY CITY**

Interest on \$50,000 to Go for
Educational Purposes.

Acceptance of a gift of \$50,000 be-
queathed the city by the late Charles
Warren Fairbanks, was voted by the city
council last night.

The money, which will be known as
the Cornell Cole Fairbanks memorial
fund, will be deposited for a period of
500 years.

The interest will be used for the erec-
tion of educational and recreational
buildings.

The fund will be administered by a
board composed of seven members, two
to be appointed by the governor, two by
the mayor, two by the Indiana supreme
court, and the seventh by the other six.

The appointment of a fifth assistant
city engineer at a salary of \$1,500 a
year was authorized by the council.

The council defeated a proposed
amendment to the traffic ordinance pro-
hibiting left turns by traffic at some of
the downtown crossings where this rule
does not already apply.

The council will hold a special meet-
ing tomorrow night for the purpose of
considering an ordinance increasing the
pay of employees at the city asphalt
plant.

About 100 employees at the plant walked
out three weeks ago because they be-
lieved their wages were insufficient.
They were receiving 40 to 50 cents an
hour.

A 10 per cent increase is contemplated.

A private meeting was held by mem-
bers of the council with members of the
board of public safety at which the pro-
posed complete motorization of the In-
dianapolis fire department, at a cost of
\$500,000, was discussed.

Some of the members of the council are
leaving the plan.

**LOCAL ENGINEER
KILLED IN CRASH**

P. M. Ahl Caught in Wreckage
in Unusual Accident.

The body of Philip M. Ahl, 40, 1123
Reld place, Big Four engineer, killed in
an unusual accident at Zionsville, a short
distance north of Indianapolis, early
last night, was brought home today.

Ahl, who had been in the service
of the railroad for seventeen years, lost
his life when he pulled his engine and
chose into a siding to permit another
freight to pass.

As the other train drew by the siding
the axle on one of the cars loaded with
coal broke from the heat of a hot box
and the car left the rails and crashed
into Ahl's engine, overturning it.

Ahl attempted to jump, but was
caught in the wreckage.

Twelve other freight cars piled up
in the crash.

It was some time before Mr. Ahl's
body could be extricated.

The deceased leaves a widow, Mrs.
Daisy Ahl; son, Earl, 18; daughter, Har-
riet, 16, and his parents, Mr. and Mrs.
Philip Ahl, living in Caldwell, Mont.

Funeral arrangements have not been
announced.

Courtesy First!

When people ask you questions or
seek directions or general infor-
mation, be specific in your answers. Tell
them exactly what they want to
know. If you don't know, tell them
where they can find out. Act as if
you really wanted to help them. Be
courteous!—Prepared by board in
charge of arrangements, for conven-
tion of Associated Advertising Clubs
of the World, here June 6-10.

**The Right Thing
at the Right Time**

By MARY MARSHALL S. DUFFEE.

At a Reception

You are in time at a reception if you
arrive any time within the hours men-
tioned in the invitation.

No apology should be offered for
lateness if you arrive before most of the
guests or for tardiness if you arrive to-
ward the close of the reception.

Your stay at a reception may be an
hour or barely a quarter of an hour,
depending on the amount of leisure at
your disposal and the number of friends
and acquaintances with whom you wish
to converse, but unless you are a very
good friend of the person giving the
reception or have been asked to do so, you
should not remain for the entire duration
of the reception.

Do not wait to be asked to go to the
dining room for refreshments at a large
reception; if no one pays you this atten-
tion you should feel no offense but
should go of your own accord.

At an afternoon reception a woman
may dress in elaborate afternoon dress or
in street dress, always with gloves, hat
and other outdoor accessories.

Never remove the suit coat, and usu-
ally one does not remove the veil or gloves.
At a formal reception the rule is that
the men remove the right glove so as to
be able to shake hands courteously, and
leave the left glove on, but men of this
generation usually discard both gloves.

At an evening reception a man wears,
of course, full evening dress, while a
woman wears elaborate evening dress and
does not leave her hat on.

WHAT READERS ASK.

"When you entertain a girl at a res-
taurant, who takes her wraps, the man or
the waiter?"

There is no hard, fast rule, but the man
usually does the courteous thing.—Copy-
right, 1920.

**St. Louis to Peking
Trains Predicted**

ST. LOUIS, May 18.—Julian H. Ar-
nold, commercial attaché to the United
States embassy at Peking, described to a
St. Louis audience recently the possi-
bility, or as he phrased it, the proba-
bility, of direct rail communication be-
tween St. Louis and Peking.

"Some day," he said, "you will be
able to board the Peking express here,
travel to Alaska, go by rail for the
thirty miles of tunnel under Behring
strait, through Russian Siberia and on
down to China. Because of the proxim-
ity of Alaska and Siberia, the two are
virtually one land area."

AMERICAN CENTRAL LIFE

Home Office Monument Place
ESTABLISHED 1899

The American Central Life is a strong, carefully
managed old line life insurance company. It is-
sues only non-participating policies.

Akron Trusses **Expert Fitting**

29 Different Styles **30 Days' Trial**

Prices Reasonable

Abdominal Binders, Athletic Supporters, Shoulder Braces, Arch Supporters,
SEAMLESS ELASTIC HOSE, Baby Navel Binders, AKRON Trusses
with the famous Sponge Rubber Pad, etc., variety, and will not slip. Leg
and spine braces. Write for catalog.
MR. L. W. HARRINGTON, factory expert, in charge of Truss Department.
DUGAN-JOHNSON CO., 29 West Ohio Street.
Indianapolis Branch of THE AKRON TRUSS CO.
Hours 9-6, Phone, 12-967; Main 567.

Auction

Famous Furniture Co.,

448 West Washington St.

Now closing out entire furniture stock at public
auction. Sales daily at 1:30 and 7:30 p. m. until
all is sold.

PRICES SMASHED!!

REMOVAL SALE

NO C. O. D.'s NO REFUNDS

OPEN SATURDAY NIGHTS UNTIL 9 O'CLOCK



**\$10.00
Sample
Coat Sale**

Novelties, tweeds, checks,
plaids and navy worsteds,
all wool, all the newest
spring models; sizes for
women and misses. Spe-
cial Wednesday—

\$5.00

**\$25.00 Polo
Coats**

All wool polo, silvertones
and velours, jerseys and
serges, all colors, short and
long lengths—

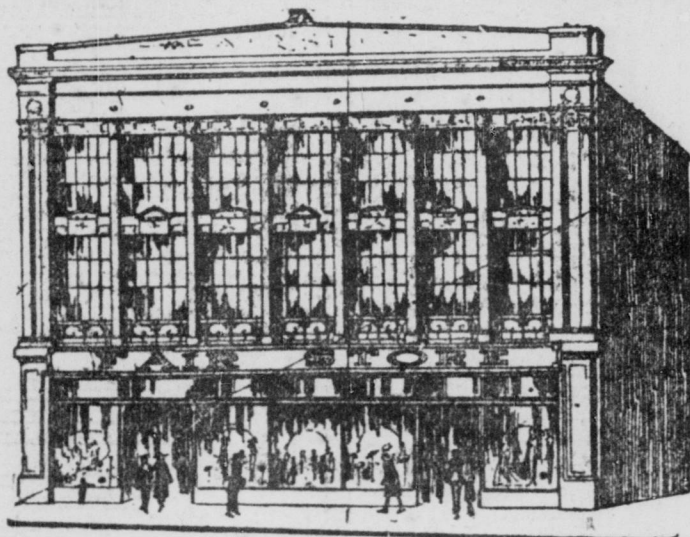
\$9.85

**\$35 Silk Lined
Sport Coats**

Long and three-quarter
lengths, bolivias, tweeds,
velours, chamelion cloth
and broadcloths—

\$17.50

THE FAIR
STILL IN OUR OLD LOCATION
407-417 WEST WASHINGTON STREET



**SAMPLE
SERGE
SKIRTS**

Fancy pockets, sizes
26 to 32. Sale price—

\$1.00

**\$5.00 Silk Pop-
lin and Plaid
Skirts**

All colors. Extra
Special

\$2.98

**\$10 Accordion
Pleated Serge
Skirts**

All sizes. Extra spe-
cial—

\$5.00

**\$15 Silk
Poplin
Dresses**

New spring models, the
styles are new and at-
tractive; all colors; sizes
range from 16 to 44; extra
special Wednesday—

\$5.00



**\$25.00 Sample
Dresses**

Jerseys, Satins and
Taffetas, all colors and
all sizes—

\$9.95

**\$30 Georgette
Dresses**

Beaded and embroidered
models; included are some
satins and taffetas. Special
Wednesday—

\$14.98

MEN'S SUITS

STYLES include single and double-
breasted models for the young fellow-
as well as gentled effects for the more
conservative dressers.
MATERIALS include finest grade of
woolens in cassimeres, unfinished wor-
steds, flannels, homespun mixtures and
serges.

\$35.00 Values	\$42.50 Values
\$19.85	\$24.85
\$47.50 Values	\$55.00 Values
\$29.85	\$34.85

Extra Special

\$16.50 Value
One lot of 40 men's
tweed suits, gray, tan
and brown; two and
three-button double-
breasted models; sizes
33 to 40; special—

\$10

EXTRA SPECIAL

75c and 95c MEN'S HEAVY work and dress suspenders; regular and extra lengths.....	39c
50c MEN'S PARIS GARTERS, silk fin- ish, single grip; limit two pairs to a customer.....	25c
25c MEN'S GARTERS; all colors, strict- ly first quality.....	12c
15c MEN'S FINE WHITE pocket hand- kerchiefs, extra large.....	7c
25c MEN'S COTTON DRESS hose, all sizes and colors.....	12c
Special Wednesday.....	12c
\$1.00 MEN'S PURE SILK HOSE, triple heel and toe, Wilson Bros., Royalty, Monarch and others of equal quality. Special.....	49c
75c MEN'S PURE SILK HOSE, just 37 dozen in the lot; all sizes and colors. Special (3 pairs, \$1).....	35c
\$2.00 MEN'S UNION SUITS, BALBRIG- GAN AND ATHLETIC, and other good materials.....	\$1.00
\$3.00 AND \$3.50 MEN'S SHIRTS, the new- est spring patterns and colors; repps, per- cales and madras materials; every shirt a new spring style. Special.....	\$1.65

**\$10.00 up to \$12.50
BOYS' SUITS**
Reduced for Wednesday only
\$6.95

**An Unusual Opportunity Awaiting
You in These \$20 and \$22.50
BOYS' ONE AND TWO-
PANTS SUITS**
\$11.95

Dark and fancy mixtures of lasting
quality wool materials in newest
modes and fancy shades of brown,
green and gray; fully lined pants;
sizes up to 17.

Boys' All-Wool SUITS \$9.95
\$15 up to \$18.50 Values,
All-wool Blue Serge Suits, all-wool green and brown
flannels, extra quality wool cashmeres. These suits are
tailored in newest modes and extra workmanship, assur-
ing the greatest length of service; all sizes up to 18.

Boys' 2-Pants Suits \$14.95
\$25 Values Reduced to
Of all-wool tweeds, cashmeres and chevilles, in choice
new shades of green, brown and gray mixtures; new
models; some have self cloth belts; fully tailored; pants
are lined. All sizes up to 18.

\$7.50 up to \$10.00 Boys' Suits \$4.95
Reduced for Wednesday only.....
Suits of extra fine cashmeres and tweeds, in brown,
gray and fancy mixtures; pants fully lined; all sizes
to 17.

**Women's House Dresses**

\$4.50 BILLIE BURK DRESSES
Made of good quality ginghams or percales;
cut full size and neatly
trimmed. Special.....

\$2.98

\$3 OUTSIZE APRONS
Sizes 46 to 54

Made of good quality percales, in dark blue
or figured percales. Prettily
trimmed.....

\$1.98

\$3 HOUSE DRESSES

Pretty stripe gingham house dresses, neatly
trimmed. All sizes.
Special.....

\$1.98

\$2.00 COVERALL APRONS

Coverall aprons in dark blue and pretty
figured light colored percales; made of a
very nifty model.....

\$1.29

**\$3.98 PORCH OR HOUSE
DRESSES**

A large selection of pretty porch and house
dresses in gingham, linens and figured
percales. Regular and extra
large sizes.....

\$2.48

Women's Underwear

65c UNION SUITS
Women's fine ribbed union suits,
loose knee, lace trimmed. Special.....

33c

75c PINK UNION SUITS
Pink or white union suits for women in
loose or tight knee. Regular or
extra sizes.....

49c

\$1.00 UNION SUITS

Choice of women's union suits, in pink or
white. Regular and extra
sizes.....

69c

Tricolette BLOUSES

\$1.95

Tricolette
Blouses in
fancy or
plain weaves,
prettily trim-
med; also
about fifteen
dozen tub
silk blouses
included in
the lot.

**\$8.75 Georgette
Blouses**

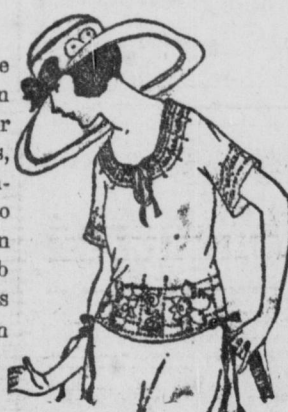
Choice of 200 pretty
Georgette and crepe
de chine blouses, in
all the newest colors
and styles; long and
short sleeves—

\$5.00

**\$5.98 Georgette
Crepe Blouses**

Pretty beaded or em-
brodiered Georgette
and crepe de chine,
in all the leading
spring shades; long
or short sleeves—

\$3.95



\$25.00 SUITS
Belted and plain models,
Silvertones, Wool
Checks, Jerseys, Wool
Poplins and Serges; all
colors. Special—

\$14.75

**Silk Lined Tricotine
Suits**
Values up to \$50.00.
All new Spring models,
sizes for women and misses.
Special Wednesday—

\$25.00

Exclusive One-of-a-Kind SUITS
Show Room Models
\$75, \$85 and \$100 Values
Poiret twills, goldtones and smooth
Tricotines. Sizes 16 to 46—

\$39.98

**Stout Silk
Poplin
Dresses**

Values up to \$20

All the newest sum-
mer shades and com-
binations designed so
as to give the stout
figure a slender ap-
pearance. Sizes 43 to
58—

\$10.00



**Stout All-Wool
Serge Coats**

Values up to \$25.00

Wednesday we are providing
special values in stout women's
new spring coats at a very spe-
cial price. Sizes from 44 to 58—

\$14.98

**Stylish Stout
Spring Suits**

Values up to \$50.00

Silk-lined French serges. An
extraordinary sale of new high-
grade spring suits of the most
desired materials of the season.
Sizes 43 to 55—

\$25.00