

CALUMET STEEL DISTRICT LOVES NO CANDIDATES

Population 75 Per Cent Foreign and Socialism Seems to Hold Upper Hand.

By a Staff Correspondent.
HAMMOND, Ind., April 14.—The Calumet steel district is so much different from any district in Indiana and for that matter, is so much different from almost any district in the country, that many things figure in considering its status in a political campaign.

In the first place about 75 per cent of the population is foreign born. Some estimates run higher and some lower. Thirty-seven varieties of languages are spoken here.

Most of them are apparently the languages of "Mittel Europa."

Any view of the political tendencies here must necessarily be the view of the English speaking people on what the foreign language speaking people are thinking, for the latter control the district and there is no way for the English to learn directly what they are thinking.

For this reason, no candidate of either party has been able to gain any considerable foothold in this district because no candidate comes up to the qualifications the voters demand.

A labor ticket is being put into the field in the county and it is possible that the socialist party may poll a great many votes in the national election.

Getting back to the fact that most of the foreign language speaking population arrived here via Ellis Island from "Mittel Europa," the politicians have concluded that they will not be exactly enthusiastic over any candidate who was active or conspicuous in the war.

The English speaking population itself may have ideas, but their ideas are always subservient to expediency, and expediency demands that the foreign population be considered first.

The name of William Gibbs McAdoo was suggested as a presidential possibility, but this suggestion was frequently met with the argument that, while McAdoo undoubtedly is the best qualified of the democratic candidates, he probably would not obtain the vote of the foreign population because of his activities in the war and because he is not believed to be wet.

The opinion was, however, that the American workmen, who are sadly in the minority here, probably would vote for

the former secretary of the treasury should be nominated.

Considerable apathy exists here, as elsewhere in the outlying districts of Indiana, concerning the selection of a democratic candidate for governor.

No particularly vigorous campaign has been made by any candidate and, consequently, many of the voters appear to be considerably at sea.

Dr. Carleton B. McCulloch of Indianapolis has spoken here and John Isenbarger of North Manchester also has appeared in this district.

They appear to be the favorite candidates on the democratic side, with the majority probably in favor of Dr. McCulloch.

There is practically no farming population in this section and an appeal to farmers could not be of any particular benefit.

Farther south, however, it is believed that Isenbarger will gain considerable votes by his appeal to farmers.

James K. Risk and Mason J. Niblack are almost unknown here and unless they make a campaign before the primary it appears they will receive little support.

Democratic prospects in Lake county, so far as the state ticket is concerned, appear better than in previous years.

The county is normally republican but the tax law is having its effect here as elsewhere.

MOTHER!

"California Syrup of Figs"
Child's Best Laxative

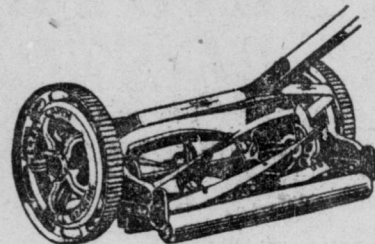


Accept "California" Syrup of Figs only—look for the name California on the package, then you are sure your child is having the best and most harmless physic for the little stomach, liver and bowels. Children love its fruity taste. Full directions on each bottle. You must say "California."—Advertisement.

HOTEL PURITAN All the comforts of home.
Absolutely fire-proof.
Rooms \$1, \$1.25 and \$1.50

Corner Market and New Jersey Sts. Weekly Rate on Application.

For the Lawn



Crestlawn and the other lawn mowers mentioned below are the only self-adjusted and self-sharpening ball bearing mowers made.
CRESTLAWN—"Every bearing ball bearing," has 11-inch drive wheels and 5 knives.
MAYFLOWER—Ball bearing; has 10½-inch drive wheels and 5 knives.
VONNEGUT SPECIAL—Ball bearing; has 10½-inch drive wheels and 4 knives.
DIRECTOR—Ball bearing; has 9-inch drive wheels and 4 knives.

Prices of mowers from \$9.25 up.

Lawn edgers, for trimming grass along edge of walks, etc. \$6.50 to \$9.50

Grass Catchers.....65c up

Lawn rollers, water weight and cement.....\$6.85 to \$19.95

Grass shears.....30c to 75c

—Main Floor.

HOSE

We recommend Vonnegut Special, ¾-inch, molded woven fabric hose in continuous lengths. Per foot.....24c
Vonnegut Special, ¾-inch.....26c
Other brands and sizes.....13c up
Hose nozzles.....75c and up
Hose reels.....\$2.40 to \$5.35
Sprinklers.....30c to \$6.25
Lawn seed.....40c per lb.

—Main Floor.

Ideal gasoline power mower for small estates, golf links, parks, cemeteries, etc. Moderately priced. We have these mowers in stock and can make demonstration.

—Main Floor.

GARDEN TOOLS

Plows, plow and drill combination, plow shovels, spades, spading forks, hoes, rakes, garden trowels, hand weeder and dibbles. In fact, every tool needed by the gardener can be found on our Fifth Floor.

Regardless of whether it is a house, barn, garage, fence or what not that you intend to paint, we have a special paint for the purpose. A paint that costs less per square foot of surface covered and lasts longer than ordinary paint.

—Fifth Floor.

Vonnegut HARDWARE CO.
120-124 E. Wash.

Special
Sale of
NOTIONS
All
Gingham
Week
Main Floor.

Goldstein's
Washington and Delaware Streets

Complete
Line of
Infants'
Wear
in our
Baby Shop,
Second
Floor.

STORE HOURS—Daily, 8:30 a. m. to 5:30 p. m. STORE HOURS—Saturday, 8:30 a. m. to 6:00 p. m.

After-Easter Sale of Millinery A Special One Day Event

Untrimmed Shapes

For Thursday Only

\$1.25 and \$2.25

Charming style shapes, selected by our buyer on a recent trip to the New York market. These hats if sold at regular value would be marked from \$3.95 to \$7.50, but we bought them at a saving and give you the benefit.

Every woman of fashion can find becoming shapes in this collection—roll brims, mushrooms, chin chins, Mitzie sailors, turbans, off-the-face shapes, etc., in colors of navy, cherry, red, sand, nigger brown, taupe, black, etc.—straws of all nature.

SPECIAL!
With this sale we have also arranged a sale of trimmings, every flower, fancy feather and ornament at one-half price, and we will trim the hat FREE of charge.

—Goldstein's, Third Floor.

Gloves, \$1.25
Fowne's two-clasp washable chamollette gloves with contrasting embroidered back, in white, gray and maize. \$1.25 a pair.

Gloves, \$1.50
Eight-button length Chamollette gloves, in gray, pongee and white, with contrasting color embroidered back, \$1.50 a pair.

Silk Bags
Special selection of black, brown, taupe and navy moire silk bags with fancy frames, fitted with purse and mirror, at \$5.00 each.
—Goldstein's Main Floor.

\$7 and \$7.50
Serge Skirts
\$3.98

Offering a special lot of women's and misses' navy blue serge skirts, gathered waist line, plain style and some with pockets of fancy darts, values up to \$7.50, at.....\$3.98

—Goldstein's, Second Floor.

House Dresses, Aprons and Apron Dresses

House Dresses
Made of striped or plaid gingham, neatly trimmed with embroidery of plain color gingham; dresses suitable for street wear, Billie Burke and belted styles; others made of blue or gray percales, high or low neck; sizes 38 to 44, \$2.49 to \$4.98.
Sizes 46 to 52, \$3.49 and \$3.98.

Cover-All Aprons
Made of light and dark percales, in blues, pink, plaids and figures; trimmed in white bias, rick-rack or ruffles; all have double belts and large pockets; square, round or V-neck, with or without collars; a splendid variety for selection.

Women's and misses' sizes, \$1.98 to \$2.25; extra sizes in dark only, \$2.49.

Women's and misses' sizes, \$1.98 to \$2.25; extra sizes in dark only, \$2.49.

Our Main Floor is a Popular Place
These Days—Women are
Busy Buying—

Spring Piece Goods

Not only because the patterns and weaves are more temptingly beautiful than ever, but because the savings offered appeal to the economical shopper.

New Printed English Voiles, \$1.98 yd.

40 inches wide, extra fine sheer quality, woven from hard twisted two-ply yarns, beautiful patterns and colorings in assorted conventional and georgette designs for blouses and dresses, \$1.98 yd.

The New "Filetex" Voiles, \$1.59 yd.
40-inch extra fine sheer quality; new novelty weave; choice range of plain shades for blouses and dresses, including black and white, \$1.59 yd.

Silk Poplins, \$1.59 yd.
36 inches wide, best quality silk and cotton poplins; choice color range, including black and white; for skirts, dresses and children's spring coats, \$1.59 yd.

Satin Plaid Poplins, \$2.98 yd.
40 inches wide, extra weight and quality; beautiful self-colored satin plaids; very desirable for separate skirts; assorted colors and black and white, \$2.98 yd.

Silk Jersey, \$5.89 yd.
40 inches wide, beautiful quality pure dye silk resembling silk jersey in appearance; specially favored for dresses and skirts; assorted shades, including black and white, \$5.89 yd.

—Goldstein's, Main Floor.

Breakfast Sets, \$2.50
Consisting of jacket and skirt, made of light figured percales, plain around the bottom; special at \$2.50 a set.

Kitchen Aprons, \$1.25
Old style kitchen aprons of excellent quality checked gingham, cut very full, large pockets, ties, offered at \$1.25 each.

Band Aprons, 59c
Small, gored band aprons of light or dark percales, large pocket; special at 59c each.

Office Aprons, \$1.98
Made of black sateen; skirt style, of extra heavy sateen; plain back, large pocket, snaps down side, at \$1.98.

Women's Union Suits, 65c
Light weight union suits of fine ribbed pure white cotton, low neck and sleeveless, wide knee with lace edge or tight fitting knee, regular and extra large sizes, every suit perfect, 65c a suit.

Silk Stockings at \$1.25
Women's hose of pure silk and fiber mixed double silk lisle garter tops and soles, fashioned legs with seamed backs, in black, white, gray, brown and champagne; every pair perfect, \$1.25 a pair.

Savings for Thursday Shoppers
UNBLEACHED MUSLIN—36 inches wide, good serviceable quality for sheets or general home use, 35c grade at 25c a yard.
PERCALES—Full yard wide, good quality, mill lengths of 55c quality, at 39c a yard.
BLEACHED MUSLIN—36 inches wide, fine quality round thread weave, regular 30c grade, 30c a yard.
CROCHET BED SPREADS—Scolloped and plain hem, size 72x80, in assorted patterns, at \$2.98 each.
BLEACHED SEAMLESS SHEETS—Of good grade sheeting, size 72x90, regular \$2.50 quality, at \$1.98 each.

Goldstein's—Main Floor.

You Can't Duplicate The Rich Phoenix Flavor!

For years, Indiana housewives have known the Phoenix name. For years they have known the Phoenix reputation for quality. They therefore expect to find Phoenix Pork and Beans deliciously rich in flavor.

Phoenix Beans ARE superior. Their piquant flavor can't be duplicated. If you haven't ordered recently, this is certainly the day to replenish your pantry shelves.

Just four short words—"Phoenix Pork and Beans"—in your grocer's ear. And then for a fine old-fashioned Pork and Bean treat!

We suggest you tear out this advertisement to remind you to phone today. Don't forget! "Phoenix Pork and Beans." Order today, taste tomorrow!

SCHNULL & COMPANY, Indianapolis

PHOENIX
BRAND



EASY CREDIT TERMS

MEN'S and WOMEN'S
STYLISH SPRING
WEARING APPAREL

On the Easiest of
EASY PAYMENT TERMS

Never mind if you're short
of cash—you don't need a lot
of money to get outfitted at
the People's.

We trust you!
All we ask is a little down
and the rest in small payments
as you get paid.

We Have Thousands of
Satisfied Customers all
Over Indianapolis

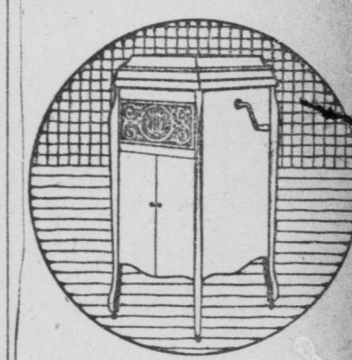
Ask your friends and neighbors.
They will tell you
that at this popular store
you are assured of a square
deal at all times.

STORE OPEN UNTIL
9 P. M. ON SATURDAYS

For eighteen years the
People's has been doing
business on the "Square
Deal" principles. Today it
is the largest store of its
kind in the city. Naturally.

People's
FRIEND CLOTHING CO.
434-436
W. WASHINGTON
ST.

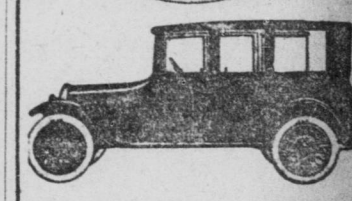
Jewel
PHONOGRAPH



Emerson Records

Jewel Phonograph Co.
229 North Pennsylvania.
Take Elevator.

Oakland



OAKLAND
RELIABLE

Just the car to meet both
the business and social requirements.

Immediate Delivery

L.F. JUSTICE MOTOR CO.
325 N. PENN. ST. MAIN ST. 190

DECAYED TEETH

Will Mar Your Appearance and
Impair Your Health.
Let our dental experts make the
second and attractive so you will retain
your good appearance and
health. Our charges are reasonable
and our terms easy to pay.
New York Dentists
41 East Washington Street
204 SAKS BUILDING

TIMES WANT ADS BRING RESULTS.