

Careful Color Blending Helps Bring 'Outdoors Inside' Many Modern Homes

Nature's greens and golds can be as important colors as reds in rugs and white in walls in planning the interior decoration of homes having indoor-outdoor living features.

Where a window wall links indoor comfort with outdoor beauty in an unbroken feeling of spaciousness, skillful blending of natural and artificial coloring gives the home an added customized appearance.

"The trend to indoor - outdoor living not only has made the homemaker more aware of the landscape when she plans her interior coloring, but also has opened up many new ways to create color schemes surprisingly individualistic," according to Margaret Pilliod, interior designer of Libbey - Owens - Ford Glass Company.

"Flowers in your garden, lawn and shrubbery—even the exterior of the house itself—can be a basis for an indoor - outdoor color panorama that is an integral part of your overall living scheme," Miss Pilliod emphasized.

For Example, soft pastel shades of living room walls can be blended with flowers and shrubbery when the room and garden or lawn are visually linked by a window wall. Furniture fabrics can be blended with the tints and hues of outdoor plants.

Patioes offer further opportu-

nities for an indoor - outdoor transition through the common bond of color. Many homemakers are using sliding doors of tempered safety plate glass to join the patio with the interior for a feeling of informality and casual living. They then are blending the material of the patio or the color of the patio furniture into the interior scheme.

Exterior building materials can be used for guidance in planning interior decor. When exterior portions of the home are easily seen indoors, try continuing the color or texture of the outdoor building material in your furniture or fireplace. Exterior siding material of a certain wood and interior paneling of that same wood offer a pleasing arrangement.

Don't overlook the kitchen as a place for blending indoor and outdoor colors to add new beauty. If a pleasing outdoor view is a highlight of your kitchen, skillful use of color can add to the living theme.

"In the past, homes and gardens rarely showed evidence of pleasing color coordination. The few standard colors accepted as usable were repeated in home after home. But with the awareness of how expanses of glass can bring outdoor beauty into home life has come the development of color to carry out this theme of indoor - outdoor unity," Miss Pilliod concluded.

Dreams Not the Stuff Homes Are Made Of

Do buyers cling to their "dream house" notions when it comes to signing a contract with the builder, or will they yield on some details for practical purposes?

Frank Cutolo, who knows from first-hand experience, says that in the final decision the home buyer will modify some of his original wishes for the sake of other features that are to his advantage.

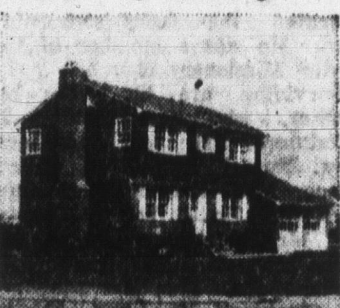
As executive officer of Edu Custom Builders in Nassau County, N. Y., Mr. Cutolo passes on all building contracts for his firm. In this role, he discusses the specifications with both buyer and architect and often makes recommendations on construction details and materials.

"The homes we build are as attractive as any in the area," he said, "but we keep a close eye on practical matters, too. Our homes combine good looks with value."

"Years of experience have shown us which materials stand up longer with minimum attention. We can be of real help to the buyer in this regard."

Mr. Cutolo recommends mineral fiber wall siding for homes built near the shore, as many of his houses are, because the acrylic color coating baked onto this siding stands up even in salt-laden air. He favors mineral fiber siding for other homes, too, for its quality appearance and minimum maintenance requirements.

A building material that costs



Recently completed center-hall home in Garden City, N. Y., points up the deep shadowline of mineral fiber siding.

slightly more than others is preferable, Mr. Cutolo says, if the added initial expense is going to result in long-range economy. An example is a roof of heavyweight asphalt shingles, which has an expected service life of up to 25 years. The heavyweight shingles are UL-labeled for fire and wind resistance, he points out to his customers.

Mr. Cutolo, whose firm builds homes on order in various parts of Long Island, reports that favorite models today are the two-story center-hall with attached garage at the side, and the "high-ranch" built over a street-level garage with utility and recreation rooms on the ground-floor.

He says these are true urban types, developed from early ranch models to give maximum living space with up-to-date facilities on relatively small lots.

New Home Opens Door To Better Family Life

BY WILLIAM BLACKFIELD
President, National Association of Home Builders

A new home is the key to better living.

This theme of National Home Week, which is the 17th in the annual series, points up the advances in home design and construction that can contribute much to your family's comfort and well-being.

You're enjoying the modern improvements in practically every other sector of life today—the smoother and quieter cars, faster inter-city turnpikes, pleasanter factory sites, attractive and efficient electric appliances, the wonders in the fields of jet transport, communication, and electronics.



Blackfield

So, too, you will appreciate the new homes that embrace advanced architectural design, community planning, spacious push-button kitchens, practical room layouts and colorful, budget-saving building materials.

Consider the recent progress in land development and community planning. Streets are laid out for beauty, safety, control of traffic. Plots are arranged for privacy and maximum use. Service businesses are conveniently located, but do not infringe on the residential character of the neighborhood.

Home costs have increased a bit in recent years, at about the same rate as the prices of consumer goods, but with a difference: you get more house for your money now. Today's home is likely to have more and larger rooms, an entrance foyer, recreation room, better lighting, ade-

Window Styles Are Key To Character of Home



Generous bow windows point up Colonial character of this new home in Westchester County, N. Y. They are stock units of ponderosa pine, as are the double-hung windows with removable grilles.

Builders and architects are relying increasingly on window treatment to emphasize the style of new homes and to give them individuality.

A Colonial house often is keyed by a big bow window, sometimes flanked by narrow swing-out casements with diamond-shaped grilles. An Early American farmhouse is suggested by tall double-hung wood windows with removable grilles that give the effect of many small rectangular panes.

Contemporary suburbans may feature banks of awning windows, large casement or sliding windows, or double-hung windows with a single horizontal mullion in each sash. Modern designs often are characterized by strips of horizontal windows placed high on the wall for privacy. Floor-to-ceiling walls of windows are used where maximum light and a view are wanted.

The deftness of a designer in selecting and locating windows can do much to give a house individuality, especially in large suburban developments. The many styles of wood windows available

in stock sizes provide an economical means of achieving variety. Even when house designs in a development are uniform, differences in window styles can set the homes apart.

Since the exterior color scheme is an important factor in individualizing a house, the paintability of wood windows is another factor homeowners appreciate. Stock windows of ponderosa pine come from the factory chemically treated for durability and ready to be painted or stained.

Besides giving a house an appearance of warmth, windows made of wood, which is a natural insulating material, actually help keep the house warm in winter and cool in summer. They come from the factory fully weather-stripped and equipped with hardware carefully engineered for easy opening and tight closing.

Wood windows of every type—sliding, casement, vent, bow, bay, awning, hopper, double-hung, picture and window-door combinations are sold by home improvement centers and lumber dealers.

Use Care in Picking Out Siding for Room Addition

Planning that long - awaiting room addition? If so, don't take the exterior siding for granted.

This sometimes happens when the home owner gets absorbed in planning the interior, and it can lead to headaches and expensive upkeep later, points out John Concord of Masonite Corporation's Home Service Bureau.

Among the important considerations in selecting exterior siding are the amount of finishing involved; the durability in terms of cracking, chipping, splintering, and peeling; and the resistance to denting and abrasion.

If your back yard is a gathering place for neighborhood youngsters, resistance to denting can be doubly important when the baseballs, stones, and

other missiles begin flying.

Many builders now are advising a new, factory-finished Masonite siding called Colorlok for room additions and garages. This is the first hardboard siding pre-finished with Goodyear's Videne film, a tough plastic material that resists staining, with excellent weathering qualities, chipping, abrasion, fading, and industrial fumes.

Available in white, green, beige, and gray, this material is designed to provide years of service without repainting. It is easily cleaned with water or detergent and water. And if you should want a change of color, it can be painted with conventional house paint.

It's available, of course, for siding new homes as well as for remodeling.

'Leftover' Appliances Can Spoil New Kitchen

A new home deserves new kitchen appliances. Don't make the mistake of trying to economize by installing your old range, refrigerator, and dishwasher in your new house.

When you add the moving costs to the increasing service

costs of aging appliances, you may find that the savings aren't great. Most important, though, are the appearance and efficiency of your kitchen. The past few years have seen many improvements made in electric kitchen appliances. Because there are many more styles, colors and operating features available, it may take longer to make a choice, but you will be able to find just the right units for your individual taste and requirements.

The new electric ranges, for instance, come in several basic styles—free-standing, compact "drop-in," separate built-in range top and wall ovens, and "console" with eye-level oven or double oven. Some have ovens at both eye-level and below the cook-top.

Various automatic features of the new electric ranges are designed to help you get better cooking results consistently with a minimum of fuss. Cleaning the new units is easy, too.

Today's electric refrigerator-freezers also come in a variety of styles, including new console or "break-front" models much like the eye-level-oven ranges in appearance. Freezer sections may be at the top, the bottom, or beside the refrigerator section.

Top rack of this 1965 electric dishwasher revolves for thorough washing, rinsing and drying.

costs of aging appliances, you may find that the savings aren't great.

Most important, though, are the appearance and efficiency of your kitchen. The past few years have seen many improvements made in electric kitchen appliances. Because there are many more styles, colors and operating features available, it may take longer to make a choice, but you will be able to find just the right units for your individual taste and requirements.

The new electric ranges, for instance, come in several basic styles—free-standing, compact "drop-in," separate built-in range top and wall ovens, and "console" with eye-level oven or double oven. Some have ovens at both eye-level and below the cook-top.

Various automatic features of the new electric ranges are designed to help you get better cooking results consistently with a minimum of fuss. Cleaning the new units is easy, too.

Today's electric refrigerator-freezers also come in a variety of styles, including new console or "break-front" models much like the eye-level-oven ranges in appearance. Freezer sections may be at the top, the bottom, or beside the refrigerator section.



This all-electric kitchen features latest console style refrigerator-freezer and range.

Washing power has been increased to eliminate hand rinsing and more cycles have been added for special purposes such as scrubbing pots and pans, gently washing fine china and glassware, and rinsing and holding dishes for later washing. New rack designs make loading easier, and many models now can handle larger loads efficiently.

If a dishwasher isn't to be installed in a new home until later, a 24-inch cabinet should be put in the space where it will eventually be located. By having the plumbing and wiring for a built-in dishwasher roughed in now, along with the other plumbing and wiring, the cost of installing the dishwasher later will be kept to a minimum.

Prize House Features Lean Look

A long, low and lean house in Beaumont, Texas, was rated one of the "best built" in a contest sponsored by American Builder magazine.

The awards, according to American Builder, were based on "quality of design, materials and the use of modern building methods."

Designed and built by Sandy Hawthorne of Beaumont, the house features an open central section formed by the living room, family room and kitchen-dining area. It has three bedrooms and two full baths and is well laid out for maximum privacy.

The contest judges particularly liked the restrained use of exterior materials and textures, including charcoal gray asphalt roofing shingles.

A growing number of new-home builders are turning to new, heavier asphalt shingles to add a greater feeling of substance and eye-pleasing texture to a roof.

Because of their extra thickness, heavyweight asphalt shingles provide naturally deeper shadow lines and have a life expectancy of up to 25 years.

The house has approximately 1,875 square feet of living space and sells for \$23,500 plus land.

Here's Plan For Outdoor Storage Unit

Outdoor living has become a way of life in America, particularly in suburbs and smaller towns, where most homes have good-sized back yards.

It seems almost as though homes in these areas come equipped with picnic tables, grills, lounging chairs, tents, badminton courts, and a host of other trappings designed for summer fun and relaxation.

To provide much-needed storage for all these accessories, Masonite Corporation's home service bureau has prepared a free plan designed for anyone's back yard.

This storage unit is permanently attached to the house, garage or carport. Covered with Masonite Panelgroove, the structure has two doors leading to garden storage areas on walls lined with Peg-Board panels.

A cupboard accessible from the outside stores cooking utensils and provides room for a fold-up table which drops down to become an efficient work surface. On the inside of the storage unit is a work table for the gardener. Privacy for the outdoor living center is afforded by a modern fence detailed in the plan.

Full details on the construction of the storage unit and fence are available in this plan, AE-324. For a free copy, send a post card to the Home Service Bureau, 29 N. Wacker Dr., Chicago, Ill. 60606.

Modern science has made some dramatic changes in the building materials field. A recent development, according to the Armstrong cork Company, is a factory-primed manufactured wood siding which will not shrink, buckle, or warp.

Sliding Doors Offer Cabinet Convenience

Hardboard sliding doors for cabinets are detailed in a free, illustrated plan available from the Home Service Bureau. Included are a tabulation of door heights, door pull details, metal and wood track information and construction tips.

Attractive sliding doors can be made from various types of Masonite products, including Peg-Board and textured boards. For the free plan, send a postcard to the bureau at 29 N. Wacker Dr., Chicago, Ill., 60606, and request AD-239.

It takes 16.8 man hours to convert 1000 board feet of timber into plywood.

Those Who Know

the

Building Business

CALL FOR

YOST READYMIX CONCRETE

10% Discount ON ALL READYMIX CONCRETE

YOST GRAVEL READYMIX, INC.

R. R. 1, DECATUR
Phone 3-3114



LESS HOUSEWORK
BETTER APPETITES

Since we installed
GENERAL ELECTRIC
CENTRAL HEATING & COOLING

ASHBAUCHERS' TIN SHOP

Established 1915
116 N. 1st St. Decatur, Ind. Phone 3-2615

IF YOUR BUILDING PLANS
CALL FOR CONCRETE
CALL
3-2561 for
DECATUR READY-MIX CONCRETE
DECATUR READY-MIX CORP.

PHONE 3-2561
E. Oak & Fornax Sts. Decatur, Ind.

IS HEATING YOUR PROBLEM?
- IF SO -
CALL **HAUGK**
PLUMBING & HEATING
Decatur, Ind. Phone 3-3316
FREE ESTIMATES GIVEN
Full Line of HEATING!
GAS - OIL - ELECTRIC - COAL
WARM AIR - HOT WATER - ELECTRIC
BASEBOARD and CEILING CABLE.
FULL HOUSE INSULATION!
"You're Paying For Insulation - So Why Not Have It?"

End Water Heater Troubles With
PSP
FLAMELESS ELECTRIC WATER HEATERS
10 years' protection for only \$10
Includes all servicing, parts and labor. Includes even the replacement of the water heater, if necessary! See your electric appliance dealer, plumber or I&M office. (Offer limited to I&M customers.)
INDIANA & MICHIGAN ELECTRIC COMPANY
An Investor-Owned Public Utility