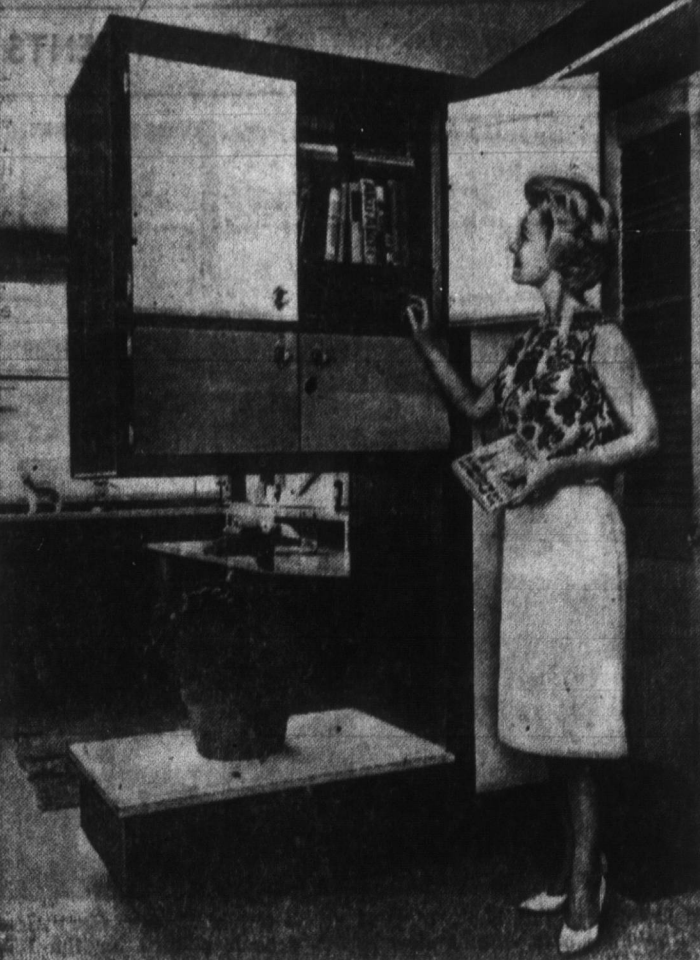


In Suspension...

Cabinet Divides Porch



An unusual divider in this remodeled porch also is a wall-suspended storage cabinet for books, games and other items used in the room. The divider is finished in Masonite Royale wood-grain paneling for striking appearance and damp-wipe maintenance. A Peg-Board panel inside the cabinet increases capacity and utility. Doors of brightly-painted hardboard give easy access from each side. Alongside the suspended cabinet is a vertical closet for additional storage.

Paneling Experts Establishes Guidelines

Here are some time - saving paneling hints for the handyman from a home improvement expert.

The first point that Robert Huff, home improvement director for Marlite paneling, emphasizes is that the handyman should read all pertinent instructions before starting work. This will save time in the long run, as well as help prevent costly and frustrating mistakes.

One of the most popular handyman panels is Marlite plank, a quarter-inch thick plastic finished hardboard. This 16"x8" plank has tongue and - groove edges to simplify fitting. Since it comes predecorated, no painting or finishing is required.

Huff gives these three guidelines:

1. Walls should be thoroughly dry before planks are applied.
2. If planks are to be used in a high humidity area, or where walls are not thoroughly dry, the backs of the planks should be wetted and stacked back-to-back on a flat surface 24 hours prior to using.
3. Always use adhesive for installation over solid backing. Concealed metal clips help space the planks.

4. Regular carpentry tools, usually only a hammer, saw and level, are all that are required for this paneling.

Before beginning the installation, lay out each wall so that the end panels are of equal width. This assures a balanced appearance, Huff says.

First nail a temporary 1" x 2" level starter strip at the bottom of the wall. This will be removed later and replaced by the base molding. To locate the first vertical joint, mark a plumb line the required distance from the corner.

If necessary to cut the panel to fit the corner, trim off the tongue edge. Always begin installation with the groove edges of the plank toward the area to be covered. Cut the plank with the finished side up.

Apply adhesive to both the plank and wall to be covered. Then place the plank in position and fasten the exposed groove edge with clips.

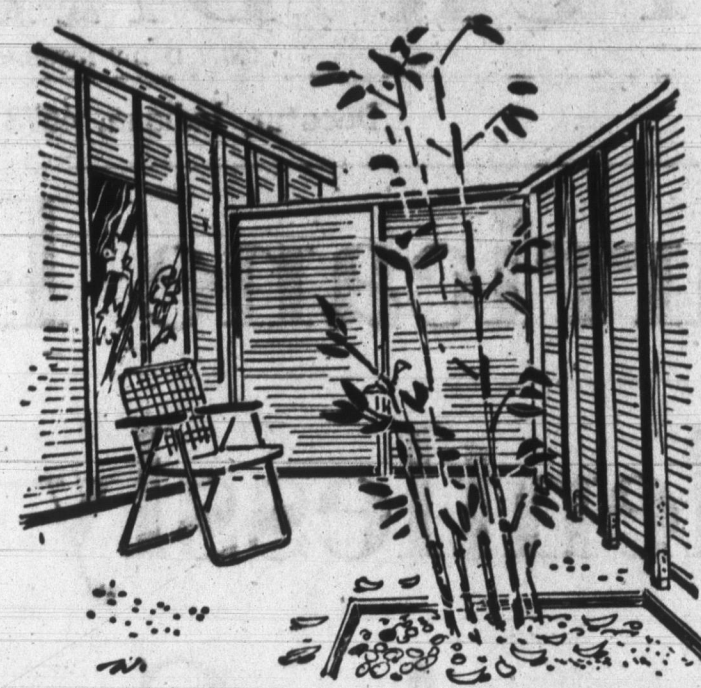
Huff points out that it is most important to allow at least 1/16" between planks for possible expansion.

Adhesive is applied to each plank before the tongue edge is inserted into the groove of the last plank that has been fastened to the wall. Press the planks firmly together, but do not force them. Continue this procedure along the balance of the wall.

Matching base, corner and cove moldings are available for use with Marlite plank.

Handymen looking for design ideas will find a variety of interesting room settings in a decorating guide prepared by Ving Smith, leading New York interior designer. To obtain a copy of this guide, send 25 cents to the Home Service Bureau, P. O. Box 250, Dover, Ohio, 44622.

Wall Gives Privacy On Small Lot



Careful planning gave privacy for outdoor living on this small lot. Roofless room is a delight, but utterly private with high walls built of horizontal tongue-and-groove cedar siding. Exterior appearance is tops, thanks to match of privacy wall pattern with house siding. Tiny planting square for bamboo inside patio gives enough garden atmosphere.

Screen From Drive



When driveway adjoins a side or back yard, there's a case for a privacy wall. Try a handsome wall built of Douglas fir in a solid board pattern, with frame-work accented decoratively. Double doors are attractive, give good access to the new private garden.

Household Scrapbook

By Roberta Lee

Cane Chairs

Turn your cane-seated chairs upside down, and wash the underside of the seats with a sponge and hot water so that they are well soaked. Add soap to the water if the cane is very dirty. Set the chairs so that they can dry in the air and, provided the cane seats are not broken, they will tighten and be as firm and taut as when new.

Packing Tip

When packing a suitcase, it's a good idea to put in one or two large plastic bags of the kind vegetables are sold in. Pack shoes or slippers in these to prevent them from soiling your clothing.

Deodorizing

Gasoline can be deodorized by adding five or six drops of oil of sassafras to each quart of gasoline used.

Washable Ceilings Rate High

More than 90 per cent of the women interviewed in a recent survey said that they wanted washable ceilings in their next kitchen.

These women explained that washable ceilings simplify cleaning and reduce decorating costs.

One ceiling black on the market today eliminates all future redecorating. This plastic-finished hardboard material, called Marlite, comes in 16" square blocks.

The backed melamine plastic finish on this paneling resists heat, moisture and stains. Even grease stains can be removed with a sudsy cloth.

Tongue-and-Groove Edges
Marlite ceiling blocks, which are available at local lumber dealers, have tongue-and-groove edges to simplify fittings. This easy-to-handle material can be installed over any solid backing, including old, cracked ceilings.

Attractive as well as practical, this plastic finished hardboard ceiling black comes in nugget and gold late patterns, as well as white and parchment colors.

Predecorated hardboard ceiling blocks can be used to blend or contrast with the overall color theme chosen for the kitchen.

Detailed installation instructions are contained in each carton so that the home handyman can do the work if he desires.

Fair's Pavilions Will Be Razed

Professor Higgins' task in turning a ragamuffin flower seller into the belle of the ball has its counterpart at the N. Y. World's Fair, which converted a former junk-filled swampland into the glamorous world of tomorrow. The job included 14 miles of roadway, 150 pavilions erected with 250,000 tons of steel, and the largest globe ever built by man.

Every exhibit at the Fair must be completely removed, including the building foundations to a depth of four feet, when the Fair ends late in 1965. The only structures to remain permanently are the City Pavilion and the Unisphere, which will become part of a community park planned for the 646-acre site.

U.S. THINKS BIG

The United States Pavilion at the N.Y. World's Fair is more than 300 feet long and contains more than 90,000 square feet of mineral fiber siding. That's enough for more than 90 average six-room houses.

HONORS ADDED

The three living former Presidents of the United States are the top officials of the N. Y. World's Fair. Presidents Herbert Hoover, Harry S. Truman, and Dwight D. Eisenhower have each received the title of honorary chairman, heading the long list of the Fair's corporation directors.

Carpet Moths

To destroy moths in carpets, lay a wet cloth over the rug, then rub a hot iron over it. It will steam, which will permeate the carpet underneath and kill any of the lurking pests. If, every once in awhile, dry salt is sprinkled on the rug before sweeping or vacuuming, the cleaning will be more effective and since insects hate the idea of salt, enough will remain on the rugs to discourage future invasions.

TALK ABOUT SMOOTH!

YOST READYMIX CONCRETE WALLS

FOR BASEMENTS OR BUILDINGS IS THE SMOOTHEST!

10% Discount ON ALL READYMIX CONCRETE

YOST GRAVEL READYMIX, INC.

R. R. 1, DECATUR
Phone 3-3114

IS HEATING YOUR PROBLEM?

- IF SO -

CALL **HAUGK**
PLUMBING & HEATING

Decatur, Ind. Phone 3-3316

FREE ESTIMATES GIVEN!

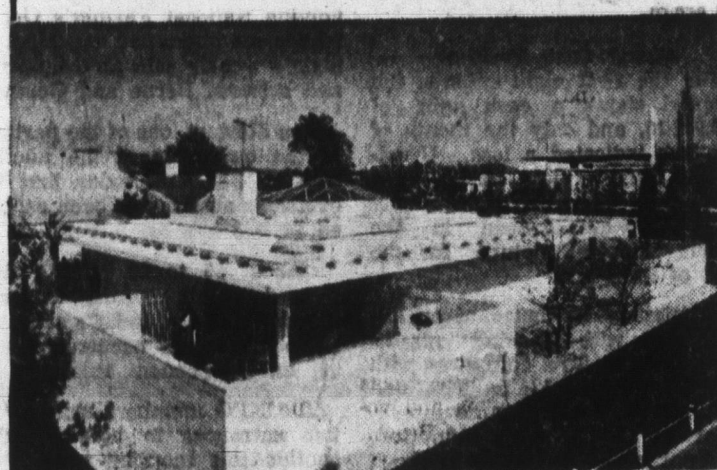
Full Line of HEATING!

GAS - OIL - ELECTRIC - COAL
WARM AIR - HOT WATER - ELECTRIC
BASEBOARD and CEILING CABLE.

FULL HOUSE INSULATION!

"You're Paying For Insulation -
So Why Not Have It?"

New Stone Wall



THE MODERN HOUSE, one of three homes at the House of Good Taste display at the N.Y. World's Fair, has four enclosed patios for maximum privacy even on a small plot. Concrete brick garden walls combine with panels of mineral fiber siding to give house sleek exterior.

Edward Durrell Stone, noted architect who was chosen to design the home of the future at the New York World's Fair House of Good Taste exhibit, was responsible for the development of a new method of house siding application.

It consists of joining 4 x 8-foot panels of mineral fiber with powerful adhesives to give a continuous wall broken only by dime-thin striations.

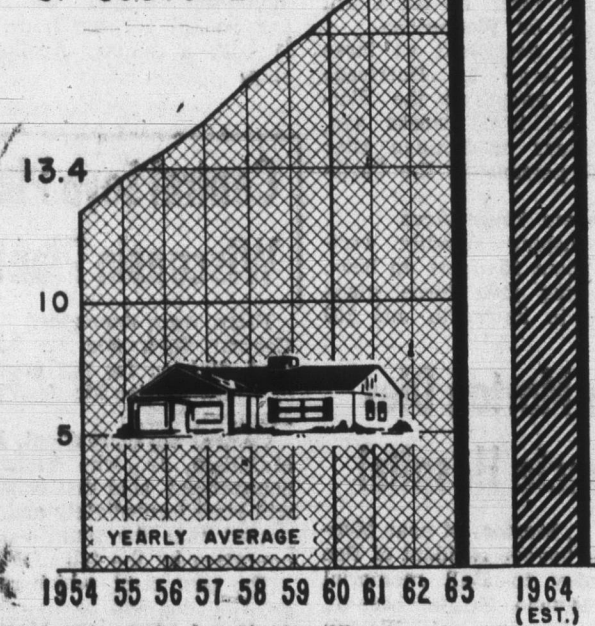
Siding made of mineral fiber panels joined by batten strips

for a board-and-batten effect is as familiar a combination as bricks and mortar, but the battenless effect is a completely new one. Architect Stone suggested it because he liked the textured surface of the mineral fiber panels and wanted to emphasize it.

Like other types of mineral fiber siding, both shingles and clapboards, the panels on the home of the future have a permanent acrylic finish that requires no painting for preservation. They will not burn, warp or rot.

MORE HOMES HEAT WITH GAS

MILLIONS OF CUSTOMERS



A record 25,165,000 families will heat their homes this winter with gas, nearly twice the number as in 1954. For the past decade, one million or more new househeating customers have been added annually by gas utility companies. The high level of new construction and homeowners who convert from other fuels account for the increase in new gas heating customers. By the end of 1966 an additional 3.5 million customers will be heating their homes with gas.

Mixed As Precise As An Angel Food Cake!

Every Ingredient In
DECATUR READY-MIX CONCRETE
Is Mixed Exactly To
Your Needed Specifications

Phone 3-2561

DECATUR
READY-MIX CORP.

E. Oak & Fernax Sts.

Decatur, Ind.

Decatur-Kocher Lumber, Inc.

has everything to

REMODEL
YOUR HOME

Quality materials . . .
complete plan service . . .
assistance in obtaining
financing to suit your
budget.

no
money
downup to 84
months to pay

When you place your remodeling jobs in our hands you have assured yourself of complete satisfaction. Our long years of experience and know-how are guarantees of the best in planning, materials, and workmanship. Stop in and talk over your remodeling needs with us. We can save you money, time and inconvenience. There is no obligation.

HOME IMPROVEMENT DIVISION

111 W. Jefferson St.

Phone 3-3131



Aluminum Siding
Room Additions
Garages
Roofing
Siding
Family Room
Paneling
Lower Ceiling
Carpets
Awnings
Patios
Ceramic Tile

LESS HOUSEWORK
BETTER APPETITES

Since we installed
GENERAL ELECTRIC
CENTRAL HEATING & COOLING

ASHBAUCHERS' TIN SHOP

Established 1915
Decatur, Ind. Phone 3-2615