



Youngster's Bedroom Planned To Be More Than Just A Room And Bed

For a child, a bedroom should be more than a room with a bed. It should be a place he can call his own — his "sanctuary" from the sometimes frustrating world of the adult — and, just as im-

portant, a room to help the growing years. That's the opinion of Ralph Sherwin, chief designer of Libbey-Owens-Ford Glass Company, who points out that a child's bedroom should be planned to satisfy the child's needs and wants, a desirable place to spend many happy hours.

"No matter what the child's age or sex, and regardless of the size of the room or the amount of money available for remodeling, a well-planned bedroom can help teach neatness, good grooming, and good study and reading habits — as well as create a desire to discover new wonders of the world about him," Mr. Sherwin emphasized.

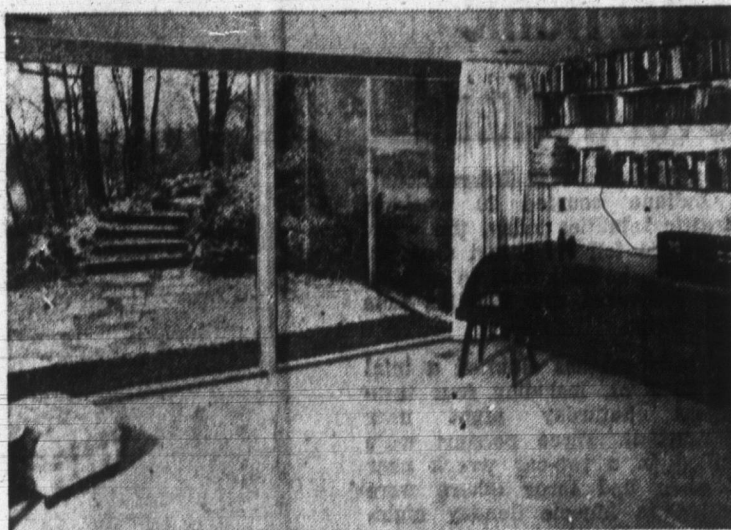
A child's bedroom should be as inviting, yet functional, as possible. It should be well lighted, have plenty of storage area and mirrors, and provide a feeling of brightness and cheerfulness. All help create an environment for healthy development.

Storage facilities enable the child to have his possessions where he easily can get and use them. Plenty of drawers and cabinets, arranged at the proper height for easy access, not only help satisfy the youngster's need for activity but also stimulate the formation of neatness habits.

Mirrors in the child's room help form good grooming habits. For example, a three-way mirror in a professionally built vanity table or a mirror hung above a chest of drawers, or a mirror on top of a simple low-table provides daughter with her own special place for dressing and makeup.

The freedom, brightness and freshness of the outdoors should be a part of the child's room. Ample window area, besides relieving a feeling of confinement, admits the natural light and beauty so necessary in keeping young bodies and minds alert and active.

To make the child's bedroom completely functional, it should contain at least a desk, desk chair and comfortable reading chair, Mr. Sherwin said. Even better is a youthfully tailored sofa and a low coffee table, so friends can be entertained in privacy by the youngsters.



A VISUAL link to the outdoors through a window wall, plenty of storage space and a large floor area for activities make this bedroom an ideal place for a child to learn, relax and entertain. The wall of Thermopane insulating glass not only gives the room a feeling of added space, but also protects against heat loss in winter and heat gain in summer.

ately. While you are making your safety check, remember the value of painting in making your home a safer place in which to live. The cost will be minimal in terms of your protection and safety.

Painting Masonry Surfaces

Before painting concrete or other masonry surfaces, be sure that the surface is clean and intact, advises the National Paint, Varnish and Lacquer Association. Fill all cracks, indentations and spalls. An alkaline-resistant primer is recommended. The finish coat should be designed to resist the expected exposure. Two finish coats will be more satisfactory than a one-coat finish. Prime and finish coats may be of the same paint.

Painting Hardboard

For a good paint job on hardboard, good painting practices must be employed, says the National Paint, Varnish and Lacquer Association. Surfaces to be painted should be clean and dry. All grease and dirt should be removed with suitable cleaners before painting. Nail heads should be countersunk and puttied, if possible, or else painted with an anti-corrosive primer. A smoother and better-appearing finish will be obtained if the sealer is lightly sanded before application of the top-coat. This is especially important when the final coat is a gloss enamel.

Prime It

All iron or steel surfaces must be primed with a rust-inhibitive primer before painting, advises the National Paint, Varnish and Lacquer Association.

Versatile Latex Paints

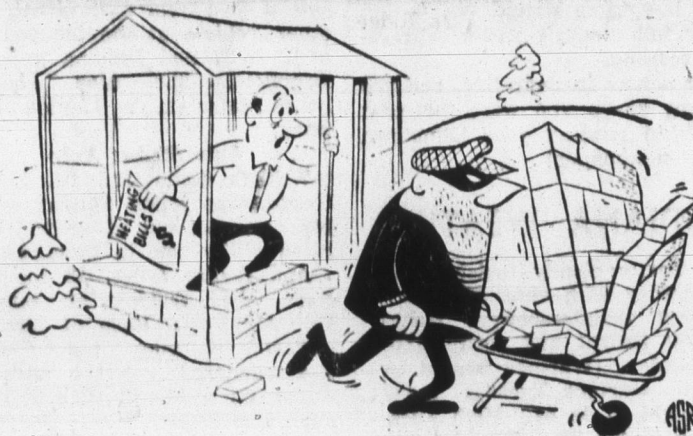
When they first hit the market, all latex paints were flat interior paints. Paint manufacturers have now developed such other finishes as exterior masonry and wood

latexes, latex semi-gloss finishes, metal finishing latexes, and multi-color latexes, says the National Paint, Varnish and Lacquer Association. Some latex paints can be used both indoors and outdoors, others only on interiors. Before you buy a latex paint, read the label carefully and see what the manufacturer has to say about the uses and limitations of his product and whether it meets your requirements.

Go Modern

Here's an economical way to "modernize" your older home: make a wise selection of paint colors for siding and trim. This will enable you to transform your home's exterior by minimizing outdated or undesirable features and emphasizing the best points of styling and line, says the National Paint, Varnish and Lacquer Association.

Your Walls Victim of Heat Thief?



Did you have a costly heating season? Few homeowners realize that heat loss through the walls of a home can be even greater than through the ceiling and attic. Walls, too, need insulation to keep away the "Heat Thief." Not only homes—but schools, churches and commercial structures will be more efficient and comfortable if the walls are properly insulated.

With the construction season at hand, people planning to build new homes should consider this point: Tests conducted recently by scientists of the Zonolite Division of W. R. Grace & Co. showed that insulation of block and brick wall areas reduces heat loss in the neighborhood of fifty per cent, and produces fuel savings that pay for the material in only two or three years.

These tests involved the use of water-repellent granules of the mineral vermiculite. Bags of this insulating material were simply poured into the top of a block or cavity wall, just as they would be on the jobsite.

Besides reducing winter heat loss, the water-repellent vermiculite insulation eases the load of air conditioners in the summer, effecting savings in electrical costs. In fact, many homeowners have been able to immediately save the insulating cost because smaller and less costly air conditioning units were required.

Homes with wall insulation often are quieter, too. In the tests with water-repellent vermiculite, loudness was cut between 20 and 31 per cent.

WE SOLVE YOUR PROBLEMS!

Consult with our Experienced Men When You Plan To Use Concrete!

CALL 3-2561

DECATUR READY-MIX CORP.

PHONE 3-2561

E. Oak & Fornax Sts. Decatur, Ind.



Here's how plywood's diaphragm action pays off when it counts. This wall was built with Texture 1-11 in the Turnagain residential area just outside of Anchorage, Alaska. When the ground opened under the house the building fell into a deep fissure — but the solidly built wall held its shape and help to protect both human lives and property inside the building. Note that the end wall is still square — the windows weren't even cracked.

Rigid Building System Gives High Performance

Builders and engineers are talking increasingly of plywood "diaphragm construction" in homes and light commercial buildings these days, and the big reason is that this high-performance system is gaining increasing recognition as a method of resisting natural disasters such as earthquakes or high winds.

While the engineering is complex in a plywood diaphragm system, the basic performance characteristics are relatively simple. Diaphragm construction in a house is analogous to "unibody" construction in cars: The house is designed structurally to resist forces imposed on it from any direction. Most homes are designed primarily to resist gravity loads, such as those imposed by the weight of snow on the roof. High winds or earthquakes always impose lateral loads as well — loads which are applied to buildings from the side.

Plywood diaphragm construction has been well-known to builders on the Pacific Coast and in other United States earthquake regions and along the Gulf Coast and in those Eastern Seaboard states subjected to hurricanes. However, homes in almost every area of the country are subjected to similar loads even if they do not have earthquakes — for instance, in the Midwest tornadoes are a threat.

The United States Department of Agriculture's Forest Products Laboratory first broached the idea of using plywood as a diaphragm material in the 1940's. But its development into a tool of design was largely the work of the American Plywood Association's research in the early 1950's.

A diaphragm is achieved in a building when a wall or floor is built with sheets of plywood in such a way that the entire floor or wall can resist loads applied parallel to the face of the panels. In other words, the plywood resists loads along its length and breadth instead of only through the thickness of the panel.

Using plywood only 3/4-inch



While most homes do not achieve true diaphragm construction because they are not engineered structures, any soundly built home with plywood sheathing or plywood siding develops a degree of diaphragm action. This kind of construction is vital in resisting wind or earthquake loadings — and it is helpful also in eliminating plaster cracks and sticking doors in new homes. The workman here is applying a panel of Texture 1-11 directly to the studs.



THE RESTFULNESS of this spacious lawn becomes a part of this family room through window walls and blending of indoor and outdoor colors. Parallel-O-Grey plate glass is used to reduce sun heat and glare without altering the outdoor colors viewed through it.

Get Interest In Flat Yards

Do you have a back yard that is as flat as the deck of an aircraft carrier? Then, my friend, you have trouble.

The dull, ballpark look of your back yard can easily be changed. All you have to do is break up the flat areas and install some structures that give a change in elevation.

There are several ways to do this. One of the most simple is to install some baffle screens, about eight feet long, which should be treated as sectionals. They are easy to build out of light weight lumber like western red cedar. Just build a frame, maybe six feet high, of sturdy 2x4s, set into 4x4 posts. On to this frame you can build almost any sort of fence. It can be lowered, it can be board-on-board, or it can be woven to get

a pattern. Now, you must figure out where you want these screens.

The best way is to use two or three in a sort of offset sequence, like a sawtooth. Leave spacing between each one. Then plant gardens in front of these screens, of even on both sides. This will create an interest area. You may even want to build more than one such installation.

Another good structure is a pergola, which can be built over a pathway. It can be used to hide a compost pile of other unsightly areas. The pergola should be designed by an architect or someone who has skill. It can be built of ordinary lumber. The upright posts should be 4x4 inches square, and the framework can be 2x4s, with latticework in 1x4s. A good wood for this purpose is Douglas fir.

Improve Your Home Now With A

- Patio
- Driveway
- Sidewalk
- Basement
- Foundation

Built With

YOST
READYMIX
CONCRETE

10% Discount
ON ALL
READYMIX
CONCRETE

YOST
GRAVEL
READYMIX, INC.
R. R. 1, DECATUR
Phone 3-3114

IS HEATING
YOUR PROBLEM?

- IF SO -

CALL **HAUGK**
PLUMBING & HEATING

Decatur, Ind. Phone 3-3316

FREE ESTIMATES
GIVEN!

Full Line of HEATING!
GAS - OIL - ELECTRIC - COAL
WARM AIR - HOT WATER - ELECTRIC
BASEBOARD and CEILING CABLE.

FULL HOUSE INSULATION!

"You're Paying For Insulation -
So Why Not Have It?"

Household Scrapbook
By Roberta Lee

Cracked Window

A temporary weatherproof repair can be made to a cracked pane of window glass by giving it a coat or two of fresh white shellac.

Homemade Duster

To make a good duster for your furniture, soak old pieces of flannel in paraffin oil overnight, then the next day wring them out tightly, and wash in lukewarm water, and let dry. Your cloths will then gather up all dust efficiently, and also produce a polish on furniture and floors.

Glazing Bread

To glaze bread or rolls, go over the tops with the whites of eggs, lightly beaten. Apply with a cloth or a soft brush before placing in the oven. A small quantity of sugar can be added to the egg white if a sweet flavor is desired.

Hair Protection

A sheet of aluminum foil, kept folded in the glove compartment of your car, may be fashioned into a cap or hat to protect your coiffure in case of a sudden shower.

**LESS HOUSEWORK
BETTER APPETITES**

Since we installed
**GENERAL ELECTRIC
CENTRAL HEATING & COOLING**

ASHBAUCHERS' TIN SHOP

Established 1915
Decatur, Ind. Phone 3-2615

116 N. 1st St.