

Adams County Farmers' Corner

FISH FRY

WED., AUG. 19
8:00 P.M.

BILL'S BARN
Middlebury, Ohio

County Agent's Corner

By: Ernest J. Lesluk
County Extension Agent
Agriculture

If you are thinking about planting evergreens, such as yews or junipers, you should do it from mid-August to the middle of September. Shrubs set out then will become established before winter and will be ready for vigorous

growth next spring. Proper planting is important, and be sure to dig a hole twice as wide and six inches deeper than the plant's root system. You do not have to remove burlap from balled-in plants, just loosen it at the top. However, remove plastic wrappings.

Add good soil, three parts top soil and one part peat moss plus one and a half to two pounds of 10-8-6 fertilizer per 100 square feet of shrub bed. But don't pack it around the new plant with your feet since you may break the roots. Settle the soil with water instead.

After planting, water the evergreens well and continue to water them into the winter. When you water the newly transplanted shrub, mulch the soil surface with two or more inches of peat moss to hold the moisture. Do not trim your evergreens when you plant in the fall since you probably will force soft growth which winter kill quite easily.

The proper care now for strawberry beds will mean a bigger and better strawberry crop next year. Fertilizing now is important since flower buds determine next year's crop. Fertilizer will increase the number of buds and yield. Five pounds of 5-20-20 fertilizer per 100 feet of row would be quite beneficial.

If you want to use your old strawberry bed again next year, renovate it immediately. Mow off the plants at a one and a half inch height, using your rotary lawn mower, but be sure you don't harm the corms. Then rake off the old foliage and burn it. Narrow the width of each row from eight to ten inches and thin the remaining plants in the rows to eight inches apart, and then apply the fertilizer.

Strawberry plants can use an inch of water a week, so water them when it's dry.

STOP

that cough with our
own Cough Syrup

Kohne Drug Store

Purple Pennings

By: Patsy Lee Leaders
County Extension Agent
Home Economics

If any of you are planning to visit the state fair on either of the Sundays, you may want to schedule a visit to the women's building at 2 p.m., as we have two women from the county who will be entered in the homemakers' style shows.

Sunday, August 30, Mrs. John Leye will be entered in the adult homemakers' style show in the suit category, and Sunday, September 6, Mrs. Ronald Pierce and her daughter, Doreen will be in the young homemakers' style show in the family outfit category.

In thanking people for the various projects at the county fair, I forgot to mention the name of Nelson Strahm, who helped with the construction of the food tiers, so "thank you," Mr. Strahm.

4-H EXHIBITS TO THE STATE FAIR

All 4-Hers who received letters saying that your exhibits were to be in the office by August 20, please remember that is this week. The food preservation exhibits are to be in the county extension office by 7:45 a.m. August 24. The foods exhibits are to be at the extension office by 7:45 a.m. August 28.

FALL STYLES IN MEN'S SLACKS

This fall's styles in slacks for men feature adjustable waistbands fitted closer to the natural waistline changes in decorative detail and in the kind of placement of pockets.

Fall styles are trim but not tight in both pleatless and singlepleat styles, reports Mrs. Bonita Farmer, clothing specialist at Purdue University. The amount of taper will depend upon an individual's build and preferences.

There are fabrics and fibers to please each person's taste. Cotton is a favorite in chino and whipcord fabrics. Acrylic fibers give warmth without weight and are often blended with wool, have built-in ease of care and resilience. Wool slacks, which may be permanently creased, provide both warmth and resilience.

In general, the specialist says, a fabric with a firm weave keeps its shape better holds a press longer and is more desirable than a fabric with a loose weave. If you want to reduce upkeep costs, choose mixtures rather than plain colors, dark colors rather than light.

Fabric finishes to improve wear and decrease care include mothproofing for wools, water and soil repellency for cotton.

To look well, slacks should fit smoothly and easily about the waist and hips, select slacks that hang straight from the waist and do not sag in the seat, knees or along the length of the leg.

Cuffed or cuffless, slack legs should barely brush the shoe tops. Do not select slacks that are cut so full as to appear sloppy or interfere with easy movements, cautions the specialist.

Signs of quality construction include seams that are wide and finished with stitching or seam tape; generous pockets made of closely woven fabric stitches twice with enclosed edges; and securely sewn buttons and belts loops.

QUICKIES

Early fall is a good time to safety check your heating system, reminds the Purdue University housing specialist. Inspect your furnace every year for worn parts and possible safety hazards.

Fibers which absorb body moisture, and fabrics which are loosely woven, are more comfortable in hot weather. Happily, these fibers and fabrics are machine washable observe home management specialists at Purdue.

Buying watermelon? Look for good red color, firm and succulent flesh, dark brown or black seeds and a yellowish underside, suggests the Purdue University produce marketing specialist.

Wash your swim suit in warm water and mild detergent occasionally to counteract the effects of chemicals used in pools, suggest clothing specialists at Purdue University.

Early fall is a good time to safety check your heating system, reminds the Purdue University housing specialist. Inspect your furnace every year for worn parts and possible safety hazards.

Fibers which absorb body moisture, and fabrics which are loosely woven, are more comfortable in hot weather. Happily, these fibers and fabrics are machine washable observe home management specialists at Purdue.

Buying watermelon? Look for good red color, firm and succulent flesh, dark brown or black seeds and a yellowish underside, suggests the Purdue University produce marketing specialist.

Wash your swim suit in warm water and mild detergent occasionally to counteract the effects of chemicals used in pools, suggest clothing specialists at Purdue University.



Hi Neighbors!

A regular meeting of the Adams county soil and water conservation district board of supervisors was held Monday evening, according to Hugh David Mosser, chairman of the board. All supervisors, with the exception of Russel Mitchell, attended this meeting. Jerry Setser, work unit conservationist, Sam Bell, conservation technician, Ernest Lesluk, county agent, and the district's part-time clerk, Charlotte Lindahl, also attended the meeting.

The Flat Rock creek steering committee will hold a meeting August 24. Hugo Bulmahn is the district's representative and will attend the meeting.

The district's "colored TV" was well received at the 4-H fair this year and many favorable comments were heard.

New co-operators accepted at this meeting were: Morris Bleeker, Union; Gerald Bleeker, Union; Edmund Woodruff, Jefferson; Dennis Harpring, Jefferson; Robert Moran, Jefferson; Ralph McAlhane, French.

Plans are progressing for the "Harvest Day" to be held October 6 on the Paul Kohne-Krick-Tyndall farm.

The board began some preparation for their annual meeting to be held in January. This promises to be a very interesting meeting.

The next board meeting will be held during the week of September 14.

Attractive Bar Top

If you want to make a real attractive bar top, use pre-finished flooring which is available in a number of patterns from pegged ranch to formal parquet. This makes the chore of finishing and polishing easy.

Varnishing Tip

If your varnish refuses to flow properly, you can thin it by setting the can in a pan of warm water which will soon give it a nice workable consistency. Never place it on the stove! And don't try thinning varnish with turpentine, since this destroys its gloss.

Finger Protection

Those sore fingers and calluses that often come from much knitting can be avoided if you'll smear your "pinkies" with colorless fingernail polish. This will protect the fingers, and it can be wiped off later very easily with polish remover.

Citrus fruit stains on clothing are usually invisible after they dry, but turn yellow when washed in hot water. Purdue home management specialists advise sponging a lemonade or orange juice spot immediately with cold water.

Wrap several layers of newspaper around hot or cold picnic foods to insulate them for short periods of time, suggest food specialists.

Wax, varnish or paint wooden outdoor furniture to protect it from the weather, suggests home furnishings specialists. Even a washing will remove the dull film formed by dust and rain.

When hard-cooked eggs are included in the picnic menu, keep them in the shell until served, suggest Purdue University food specialists. Carry cooked and chilled eggs to the picnic site in the original carton.

If you're taking a vacation trip with small children in the car, hang a shoe bag over the back of the front seat, suggest Purdue University home management specialists. Use the shoe bag pockets for small toys and clean-up equipment.

Rest up for your vacation! Since fatigue affects your entire driving ability, be well rested before driving any distance, advises the safety specialist at Purdue.

Since brick and cement or concrete floors are porous and may stain, wipe off or hose off spills immediately, advise home management specialists at Purdue University.

Before scrubbing brick or cement floors, rinse them off to prevent dirty water from soaking in, recommend home management specialists at Purdue University.

LOST AND FOUND

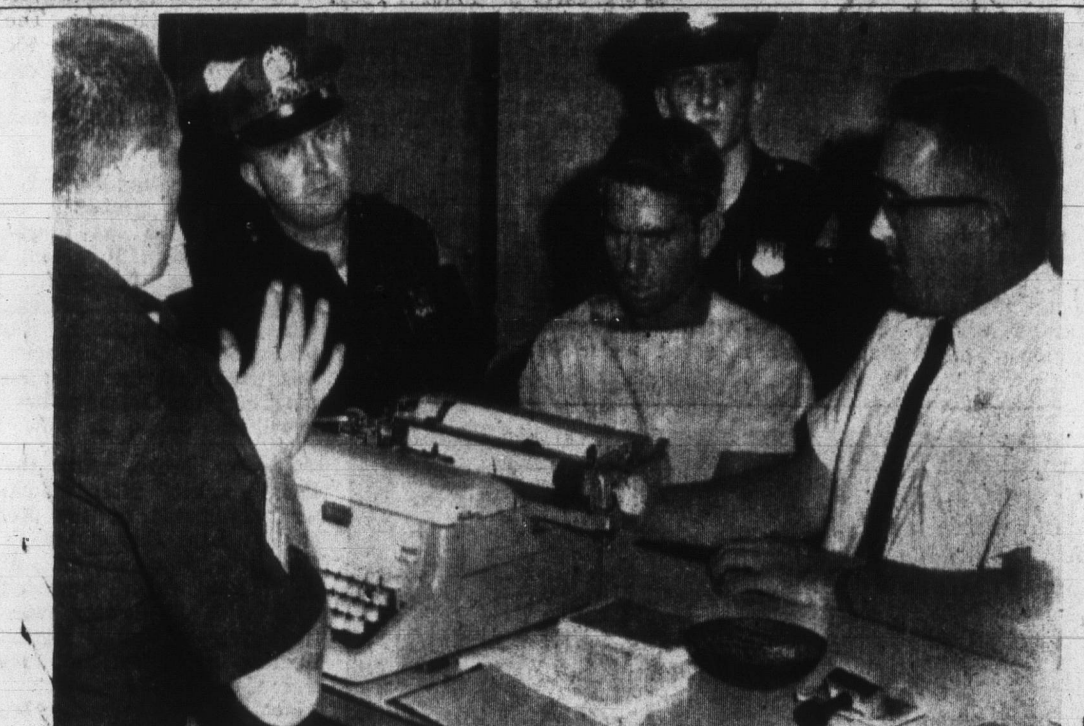
Check the county extension office for articles lost at the fairgrounds. All articles turned in at the 4-H office in Adams Central school during the fair were brought to the office in Decatur and may be claimed by the owners here.



PROVOKED by a reporter's question outside courtroom in Chicago Monday, Teamsters president James Hoffa returns fire with a fierce scowl and a pointed finger. Hoffa was sentenced to five years in jail and fined \$10,000 for his conviction of conspiring to defraud the union pension fund. (UPI Telephoto)



FRONT OF LIQUOR STORE at Dixmoor, Ill., where officers had to use tear gas to restore order in the mixed community. From 200 to 500 Negroes and white persons milled about the liquor store. The count rose to more than 300 injured in the rioting. All the injured suffered from cuts from bricks, stones, chunks of cement, and other things thrown through car windshields and windows. (UPI Telephoto)



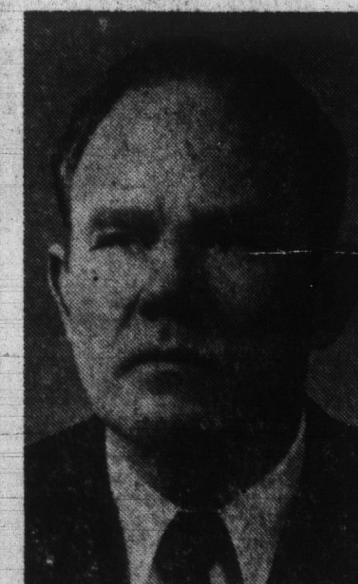
BRUCE DISHMAN, 34, was booked Monday in federal court in South Bend for kidnapping of a nine-year-old minister's daughter, Kristin Yvonne Smith. Kristin was pulled, bound hand and foot, from the St. Joseph river near Niles, Mich. State charges were also filed against the self-employed tree trimmer. (UPI Telephoto)

TWELFTH ANNUAL BOBO TENT MEETING

4 miles East of Decatur on 224 to 101, then 2 miles South to Bobo or 2 miles North of Pleasant Mills on 101

AUGUST 19 - AUGUST 30

**7:30 EACH EVENING
2:00 O'CLOCK SUNDAY AFTERNOON**



**HEAR
Rev. H. E. Darnell**
Evangelist



**HEAR
Edward's Trio**
Singers and Musicians

A Cordial Invitation is Extended To You!
GENE BEBOUT, President MYRTLE CLEMENTS, Secretary

JONES BROS.

Excavating - Bulldozing -
Steel Erecting - Building
Wrecking - Farm Ponds -
Farm Bridges-Land Clearing -
Fence Row Clearing.

We Also Have Washout Fill.

**PHONES
2-2412, 2-2475**

Berne, Indiana



...more PROTECTION
Famous 80-20 collision coverage
protects you against EVERY LOSS
...regardless of the amount

Have you ever compared the premium cost and coverages in your present auto policy, with those offered by Farm Bureau Insurance?

You'll find that you usually can get more protection for the same premium cost... or the same protection for lower premium cost... or both!

For example: consider our famous 80-20 collision coverage. You pay only 20% of the loss, even if it

is only one dollar. Farm Bureau Insurance pays 80% of each loss, up to \$200... and 100% of the loss above that. The most you can ever pay on one loss is \$40, even if your car is totally demolished.

Here is protection that relieves you of the financial strain of every accident, yet the premium is comparatively low. That's why 84% of our policyholders who carry collision insurance, are protected with this 80-20 collision coverage.

Does your present auto policy expire soon? See your Farm Bureau Insurance agent before renewing. He probably can save you money.

Farm Bureau Insurance
130 EAST WASHINGTON STREET
INDIANAPOLIS, INDIANA

Available through
Thrifty McBip

Auto premiums may be paid annually, semi-annually—or you may use the Thrifty McBip plan which allows you to lump all your Farm Bureau Insurance together, and pay for it in regular monthly payments that are easy on your budget.