

Builders Favor Compacts

The builder's favorite electric range is variously called a one-piece built-in, a slip-in or drop-in. The reasons this type suits the builder so well are essentially the same ones that make it ideal for family kitchen remodeling.

1. It has the built-in look that is just about mandatory these days. It fits into an up-dated kitchen smoothly, with special trim that integrates it with surrounding cabinets and counters.

2. The one-piece built-in is tailor-made for compact kitchens where counter and cabinet space is at a premium. A variety of models is available to fit in a space from 24" to 30".

3. The same extra-help features found in the other types of electric ranges are available in the one-piece built-in. Its auto-

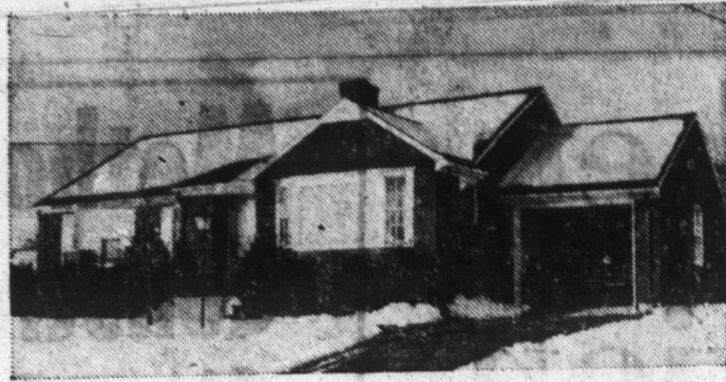


ONE-PIECE built-in electric range, shown here, is ideal for remodeling compact kitchens.

matic timers and heat-sensing devices help take the work and guesswork out of cooking.

4. Installation is quick and uncomplicated. This helps speed up the entire remodeling project, reducing inconvenience to a minimum. It is the most economical way to put a built-in electric range in a kitchen.

Snow on Roof Is Sign Of Comfort Down Below



Covering of snow on roof is sign that house is insulated thoroughly. Blanket of mineral wool keeps heat inside house, prevents it from escaping up through roof and melting snow.

Like to get a rough idea of how effective your insulation is? After the next snowfall, see how long the snow remains on your roof compared to others in your area—if the weather remains below freezing, that is.

The longer the snow stays, the better the insulation. In a house that's properly insulated, heat is effectively blocked from escaping through the roof and walls.

In a poorly insulated house, heat pours out through the roof, melting the snow on its way. It's a safe bet that these houses are drafty and that heating bills are needlessly high.

If your house fails the snow test, don't despair. Even though you own an older home, it probably can be insulated to recommended standards without any exceptional fuss or expense.

Existing homes of all shapes and sizes and with a variety of exterior materials have been successfully insulated with mineral wool by contractors who use pneumatic equipment and special installation techniques.

The type of mineral wool used to insulate existing homes is called "blowing wool". Its consistency permits it to be blown into the spaces between ceiling joists and wall studs to provide a protective barrier against heat loss.

A reliable insulation contractor can up-grade your insulation to meet current standards by following the recommendations of the National Mineral Wool Insulation Association. These call for mineral wool to be installed to provide a resistance to heat loss of R-19 or R-24 in ceilings, R-11 in walls and R-13 in floors above unheated spaces.

Insulation that meets these standards will assure added comfort—winter and summer—and will help keep both heating and cooling costs low.



PAINTING PLYWOOD

An attractive finish that does not show the grain is easy to obtain on fir plywood, the most popular material used by the home craftsman, if the surface is first given a coat of penetrating resin sealer to equalize absorption.

The first step, of course, is to prepare the surface. It must be sanded as smooth as possible, be clean and free of any traces of oil, grease or laminating glue. Nail holes and breaks in the surface should be filled and sanded when dry.

If you are planning to end up with a colored, opaque finish which hides the surface completely brush on a coat of pigmented penetrating sealer. After it has dried, sand lightly to restore a smooth surface, and remove all sanding with your vacuum cleaner or a cloth dipped in mineral spirits.

Now for the second coat. If the top coat is to be a gloss enamel, the second coat should consist of equal parts of enamel undercoat and the top coat. If the top coat is to be a latex, apply a second coat of the resin sealer. Sand lightly before applying the final coat by brush, spray or roller.

When you purchase your sealer and top coat, be sure you are getting a quality product, because only quality paints and sealers will give you the service you want and expect.

Many people prefer a so-called natural finish on good quality plywood, one that shows the grain of the wood. First of all, you must select plywood which has an attractive pattern and is free of blemishes and plugs. Next, sand the wood as much as possible.

Now brush on a coat of clear penetrating resin sealer. After this has dried, sand lightly with fine or extra-fine paper. More than likely you will want to color the wood to some degree. You can either apply a coat of wood stain, a coat of colored penetrating sealer, or you can tint clear sealer with color-in-oil of the desired shade, reducing the sealer.

Which ever you use, let stand for a few minutes and then wipe off to get the color you want.

After the color coat has dried thoroughly, sand lightly as before, and then brush on one or two coats of varnish of the desired sheen.

For modern blond effects, do this after the first coat of sealer has dried. Thin white pigmented resin sealer or enamel undercoat 50-50 with odorless paint thinner and brush on the surface. Let stand for a few minutes and wipe off with a clean, lintless cloth. After this has dried thoroughly, protect the surface with one or two coats of varnish.

LATEX PAINTS POPULAR WITH HOMEOWNERS

Although they have been available as a general product for 15 years, latex paints are generally thought of as being "new". At any rate, they have experienced a tremendous consumer acceptance in recent years, the National Paint, Varnish and Lacquer Association reports. Their ease of application, rapid dry, ease of clean-up of brushes and rollers, and their resistance to alkali have made them very popular with homeowners and commercial users alike.

For interior walls and exterior masonry they are one of the standard and most useful products with a very substantial history of satisfactory performance. Only recently have latex paints been developed which have sufficient flexibility to permit their use on exterior wood and on bituminous surfaces. They are among the established coatings for concrete, stucco, brick, cinder block, and similar surfaces.

Latex paints do not generally have a very high degree of resistance to penetration by moisture vapor or standing water. Unless specifically formulated in a floor and deck enamel, they are likely to be lacking in abrasion resistance.

Since the latex products of different manufacturers may differ substantially in some of their properties and best conditions for use, it is even more important than ever that the manufacturer's directions for use of these products as given on the label be followed implicitly. In particular most manufacturers recommend the use of a specific primer as part of the exterior "system", and the entire recommended system must be used to obtain the results desired.

COUNT BLESSINGS

Strip away the veil of nostalgia from an old-fashioned country kitchen and you'll find ashes, inefficiency and stifling summer heat. You'll be glad to settle for a roomy modern kitchen with a cool-cooking electric range.

Practical Den for A Man

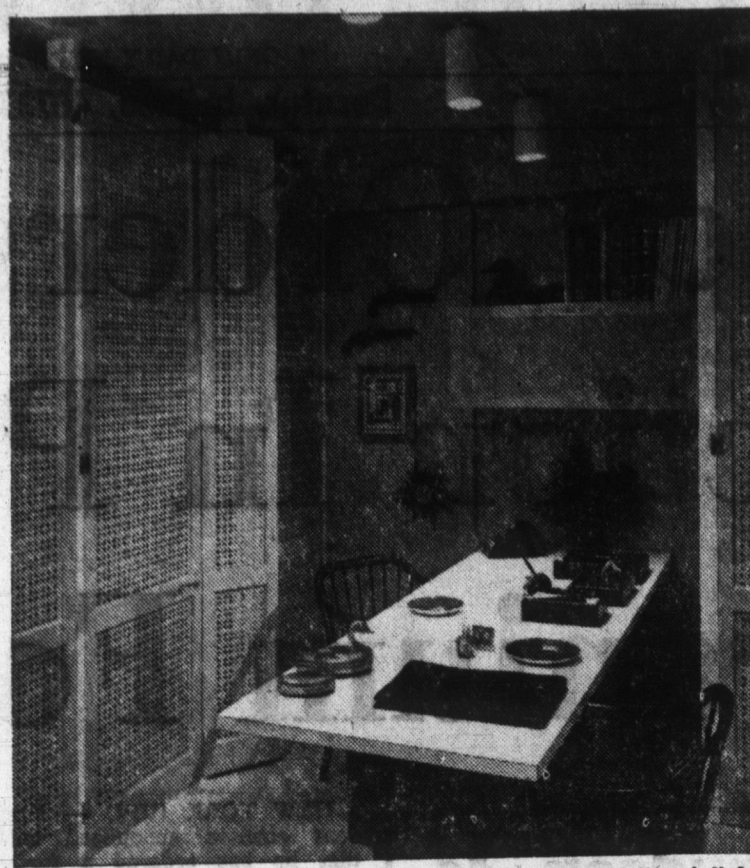


Photo Courtesy of Panelboard, Newark, N. J.

Practical comfort is the keynote of this contemporary study corner in a man's den created by Fred B. Shallow, A.I.D., noted interior designer. The simple lines of the furnishings and the dimensional elegance of the hardwood grillework are combined with the distinctive texture of embossed tile flooring and the woven fabric framed in the door of the hanging storage unit. The matching spindle-backed arm chairs and white-topped desk are dramatically set against the predominant rich gold hue of the wall and the hinged Decora Doors inset with a masculine granada pattern in Panelaire grillework which conceal functional floor-to-ceiling storage shelves on either side of the desk. Overhead accent lighting and the antique pistols and wooden jockey combine with the brass, leather and porcelain accessories on the desk to complete the design with imaginative touches.

HOME OWNERS QUESTION BOX



Q. Can I assume that if a new house is insulated to meet FHA standards that it is insulated adequately?

A. No. FHA's Minimum Property Standards are just that—minimum. You'd be wise to follow the recommendations of the National Mineral Wool Insulation Association, which call for mineral wool with an installed resistance to heat loss of R-19 or R-24 in ceilings, R-11 in walls and R-13 in floors above unheated spaces. Following these standards will provide more comfort and will reduce heating and cooling bills.

Q. We are remodeling a rambling old house—circa 1760—and want to use modern materials without spoiling its Colonial air. What sort of roofing material "goes" with Colonial?

A. Dark colors are most appropriate. Heavyweight asphalt shingles in one of the dark blends are being used extensively with both new and old Colonial-style homes because they look right and wear well.

Q. We plan to build a typical Colonial house with many small panes of glass. This type of window looks great, but seems to take forever to wash. Any suggestions?

A. If you'd asked me this question 10 years ago, I'd have had to say no, but today there's a solution. Specify ponderosa pine windows with removable grilles. These grilles are available in either diamond or rectangular patterns, and they snap in and out in seconds. With the grille out, you have only a single pane of glass to wash.

Q. What will remove a shellac stain from a wool carpet?

A. Try carefully sponging the spot with alcohol.

Dishwasher Can Be Efficient, Exotic

Modern electric dishwashers can be as exotic on the outside as they are efficient on the inside, if the homemaker chooses. Trim kits available with some of the new models permit using colorful laminates or other materials on the dishwasher's front panels instead of the standard white, pastels, metal or wood finishes supplied by the manufacturers.

To prove it, a Los Angeles appliance dealer displayed 15 automatic dishwashers, each with a different front. Among the more exotic ones were those with panels of gold and orange tapestry, unborn calf skin, green vinyl tile resembling Venetian glass, black tapestry, gold metallic paper, and orange mosaic tile.

You Can Cure 'Dishpan Feet'

Aching feet may seem a far-fetched reason for buying an automatic electric dishwasher, but if you'd like to spend several hundred more hours per year sitting down, it's something to consider.

The average housewife, who spends an hour or so per day just washing and drying dishes, can acquire "dishpan feet" as well as hands, for it's a chore that requires standing and walking.

The woman who has an electric dishwasher can do a sit-down job such as mending or helping the children with their homework while the dishes are automatically washed.

Decks Provide Better Living

Playing with decks is becoming a popular pastime with imaginative architects and with owners helping to plan their new home.

There is no question, says the West Coast Lumbermen's Association, that decks properly conceived and designed can make or break a house.

A deck opens the walls of the home, gives the family an extra depth of enjoyment, and makes it easy to move back and forth from indoors to outdoors.

You can have sheer luxury in your deck, with all sorts of electric outlets for television, night lights, cooking devices, or you can have a simple, inexpensive deck opening off a bedroom.

The good decks are of wood, and they are built to permit easy cleaning, with slight spacing in the floor boards. Most decks are left unpainted, although the wood may be treated with some chemical water repellent to insure long life.

The flying deck on the view side of a hillside lot creates a private living and dining area with incomparable charm. A bedroom deck can be enclosed behind screening fences for privacy and quiet. Decks may front on garden spots, may even be

disconnected from the home and set in a garden paradise.

The deck is man's best investment, because it provides living area at a fraction of enclosed space, and it expands the usable space in a home. Most decks are built either of western red cedar or Douglas fir, because these woods are tough and durable, will weather to soft natural silver colors and can be easily shaped to any desired size.

Be sure the lumberman advises, to explore every possibility of wood deck use to enlarge your living area when planning a home or adding to an older home.

Windows Can Work Wonders

"Probably no other single change can improve a house at such low cost as a large new window," says A. M. Watkins in his latest book, "The Complete Book of Home Remodeling, Improvement, and Repair," published by Doubleday.

The right window in the right place, he points out, can replace a small existing one to exploit a good view or greatly improve a room where there was nothing but solid wall before.

"Don't think of a window as merely a sheet of glass," Watkins says. "Think of it as a medium for letting sunshine, light and brightness flood into a room, as well as turning a dark room into a bright, cheerful space."

Watkins urges care in the choice of windows. Inferior windows, he warns, can be a source of chills and drafts. Two things to look for in a quality window are accurate fit and effective built-in weather-stripping, he says. Families in temperate parts of the country should use either insulating glass or storm windows to add comfort and heating economy.

Families who agree with Watkins and plan to use windows as a remodeling tool in their own homes would be wise to look into the wide variety of factory-made ponderosa pine windows available from local building supply dealers.

Quality wood windows are precision-made for accurate fit and low-cost installation. Built-in weather-stripping and carefully designed hardware contribute to draft-free comfort and lower heating bills.

Most people also prefer wood windows for their appearance. Condensation is much less of a problem with them because wood doesn't get as cold as metal.

APRIL SHOWERS CAN BRING MUDDY DRIVES, WALKS, BARNYARDS.

NOW IS A GOOD TIME TO PAVE WITH

YOST READYMIX CONCRETE

10% Discount ON ALL READYMIX CONCRETE

YOST GRAVEL READYMIX INC.

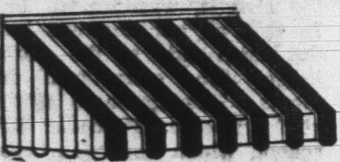
R. R. 1, Decatur PHONE 3-3114

YOST GRAVEL READYMIX INC. R. R. 1, Decatur PHONE 3-3114

MANY COLORS AND STYLES

AWNINGS

20% DISCOUNT



ON ALL ALUMINUM

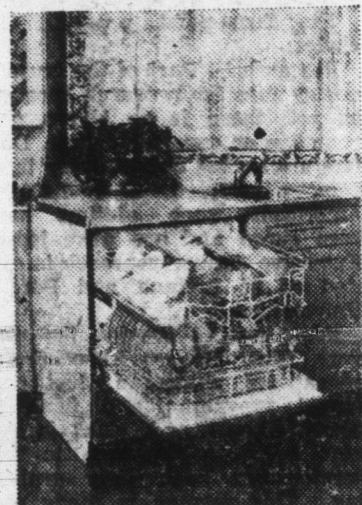
AWNINGS!

Kohn Window & Awning Co.

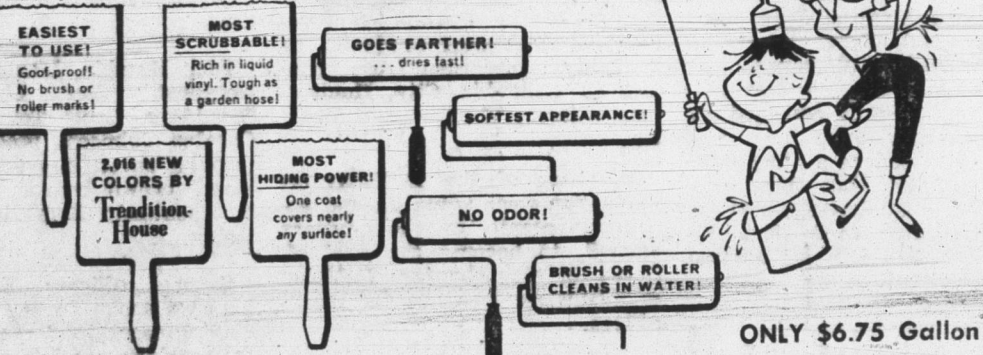
711 Winchester St.

Phone 3-2259

Dishwasher Lowers Cost Of Cabinetry



BEFORE YOU SAY, "No, we can't afford it," when your wife asks for an electric dishwasher for her new kitchen, count the cost of the following: 1. A cabinet to go where she wants the dishwasher. 2. A double sink—usually needed when there's no automatic dishwasher. Deduct the total from the price of a new electric dishwasher to arrive at the true cost of adding this time and labor saver when building or remodeling your house.



ONLY \$6.75 Gallon

PERFECTION PAINT

Borrow your new "Trendition House" Home-Decorating Guide from:

SMITH DRUG CO.

CALL 3-2561

FOR AN ESTIMATE ON YOUR

CONSTRUCTION PLANS

BUILDINGS • BASEMENTS
FOUNDATIONS • DRIVEWAYS
SIDEWALKS

DECATUR READY-MIX CORP.

E. Oak & Fornax Sts.

Decatur, Ind.



- LESS WASHING
- LESS HOUSE CLEANING
- LESS DRY CLEANING
- LESS RE-DECORATING

WITH CLEAN Filter Fresh, GENERAL ELECTRIC HEATING

Call Today

Free Survey & Estimate

Ashbauchers' Tin Shop

Established 1915

116 N. 1st St.

Decatur, Ind. Phone 3-2615