



**THIS HOUSEWIFE'S** choice dishes not only are attractively displayed but also are kept free of dust and dirt on shelves protected by glass. A do-it-yourself enthusiast using simple hand tools can convert ordinary storage shelves into "built-in" cabinets by enclosing them with sliding doors of Parallel-O-Plate glass, mirrors or pattern glass.

#### STORING LUMBER

Store long lengths of lumber on racks or shelves to keep material off floor, and apply clear sealer or shellac to the grain of each piece to prevent splitting.

### Permanent Bench Attracts Visitors

Permanent wood benches set at comfortable intervals around wood patio decks seem to be as much used as occasional lounge chairs which can be moved about.

There seems to be a tendency, one housewife pointed out, to arrange casual chairs so that they form a conversation center around one or more of these permanent benches.

The more attractively they are designed, this lady continued, the more they seem to attract people. Also, comfort is a big item, so rounded edges on the seats and a gently reclining back really prove popular.

Probably the most popular wood is Douglas fir, because it is tough and long wearing and it can be smooth edged to eliminate splinters.

### INSULATION PAYS OFF IN COMFORT, SAVINGS ON HEATING, COOLING

Adequate insulation is one of the soundest investments a family can make in a house. It pays off in generous dividends — in lower heating and cooling costs, as well as in added comfort for the life of the house.

Just how much a family will save on cooling and heating bills will vary, but it's not unusual to save 30 per cent after boosting insulation to meet recommended standards.

Insulating materials are made of mineral wool, rock, glass or slag, paper pulp, gypsum, asbestos, cork, aluminum foils, vermiculite, cotton and other vegetable and mineral matter.

#### Follow Insulating Guides

The Federal Housing administration has established minimum insulation standards for both heating and air conditioning. A good guide for families planning to insulate their homes with mineral wool is the recommendations to the National Mineral Wool Institute.

These call for mineral wool with an installed resistance to heat flow of R-19 or 24 in ceilings, R-11 in walls and R-13 in floors over unheated space.

The "R" number represents the rated ability of installed insulation to block the flow of heat. The higher the "R" number, the more effective the insulation.

A batt and a blanket of insulating material are essentially the same, differing only in length. A blanket is sold in rolls up to 100 feet long, while batts are usually made up in either four or eight-foot lengths. Both are available in widths to fit standard spacings between wall studs and ceiling joists.

Most batts and blankets have an attached vapor barrier on one side. Many are totally enclosed, with a vapor barrier on one side and a vapor-permeable material on the other. They are also available with a backing of aluminum foil designed to reflect radiated heat. In existing homes, where wall studs are not accessible, a form of mineral wool called "blowing" wool is used. This is especially made to be blown through a pneumatic hose

into the spaces between wall studs. Pouring insulating material is often used to insulate ceilings packaging in bags and is most where joists are exposed in the attic.

Installing insulation in a new room addition or as part of an attic remodeling job can be tackled successfully by the average do-it-yourselfer. The only tools required are a sharp knife and a heavy-duty staple gun, which usually can be rented.

#### To Keep In Mind

Here are a few points to keep in mind:

1. Always follow the individual manufacturer's directions carefully.
2. When using batts or blankets, make sure the vapor barrier faces the heated side of the room.
3. Butt insulation together tightly. There should be no gaps to permit loss of heat.
4. Don't cover eaves, vents or attic louvers. Air circulation is important, year round.
5. Place staples no more than six inches apart.
6. Pack insulation into small space around window and door framing. Cut a separate piece of vapor barrier to cover these areas to form unbroken protection.
7. To protect water pipes from freezing, fit insulation between them and outside wall sheathing. A separate piece of vapor barrier should be applied on the room side of pipes.



**FLOORS ABOVE** unheated crawl space require insulation. Home owner staples wire mesh to keep blankets of mineral wool in place.



**INSULATION HELPS** convert unfinished attic for comfortable living. Mineral wool batts are stapled in place with vapor barrier facing heated area.



**BATTS OR BLANKETS** OF INSULATING material can be cut easily with knife or scissors when odd-size pieces are needed — important, since to achieve best results while insulating an area, all irregular crevices should be filled. In use here, mineral wool.



**DO-IT-YOURSELF FANS** SHOULD CALL IN professional help, when "blowing wool" insulation is used. Here, insulation mechanic is shown filling spaces between attic joists, with the use of a pneumatic hose brought in through ventilation opening.

**TIGHT FIT**  
Prevent screws and bolts from working loose on items which get hard wear by loosening and dabbling a few drops of shellac or lacquer on threads. Tighten while coating is still tacky.

### HUMPHREY Tension Sealed ALUMINUM COMBINATION STORM WINDOWS and SCREENS



#### Check These Features

- Beautiful Slender Frames
- Self-Storing, No Changing
- New "Tension Sealed" Construction
- Permanent
- Made To Order
- Easy To Operate

Raise for Summer — Lower for Winter. Saves Up to 35% of Total Heat Loss

#### KOHNE

Window & Awning Company

711 Winchester St. Phone 3-2259

### IF THE FREEZING and THAWING THIS WINTER DAMAGED YOUR DRIVE

... CALL ...

3-3114

for

ROAD and DRIVEWAY

**CRUSHED GRAVEL**

PROMPT DELIVERY

10% Discount ON ALL READYMIX CONCRETE

**YOST GRAVEL READYMIX INC.**

R. R. 1, Decatur



MORE HOMES ARE PAINTED WITH THIS HOUSE PAINT THAN WITH ANY OTHER BRAND



You get extra years of beauty and protection with Sherwin-Williams House Paints. Less frequent repainting saves you money. Their superior quality and durability have been proved on homes in all climates.

Whether you choose famous SWP House Paint or the amazing new A-100 Latex House Paint you are getting the very best house paint it's possible to buy. Ask us which type is best for your home.

**Sherwin-Williams Co.**  
222 N. Second St.

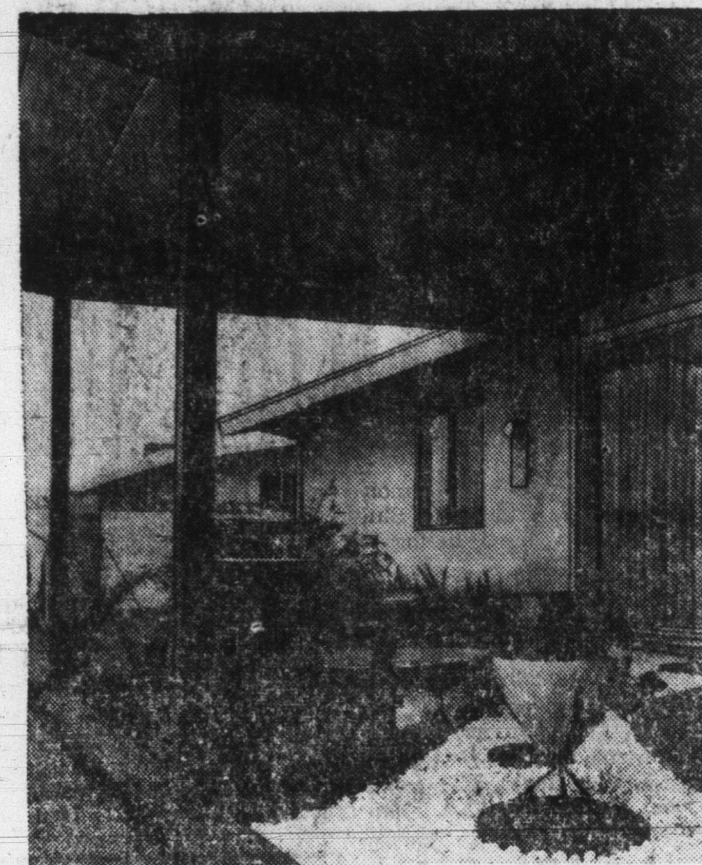
#### FOR CONVENIENCE

Good landscaping design stresses convenience and the family's wants and needs.

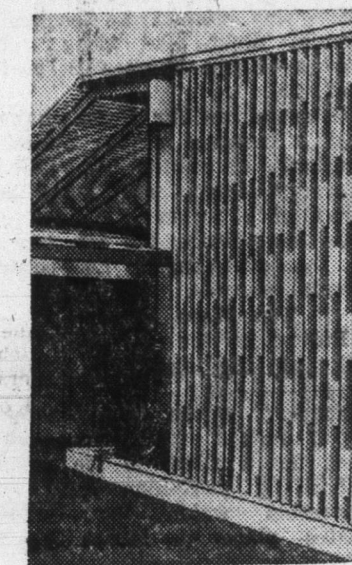
Gone are the days when ceilings were the forgotten stepchildren of interior decoration. Armstrong Cork Company decorating experts say an entire range of attractive designs and textures are available to make acoustical ceilings an integral part of any room's decor. The newest effect is a white-on-white raised plastic design which comes in either a paisley or starburst pattern.



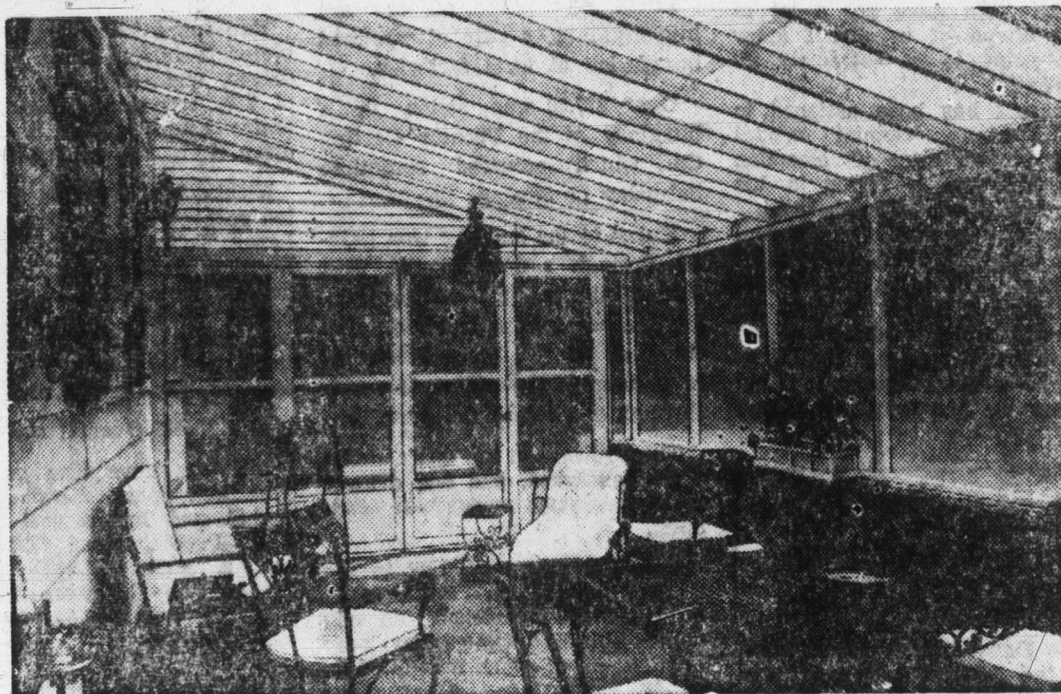
**FENCE PROVIDES** face-lift for backyard corner, as well as privacy and protection. Decorated with trellis, planter box and bench, it's built of redwood. By Simpson Timber Co.



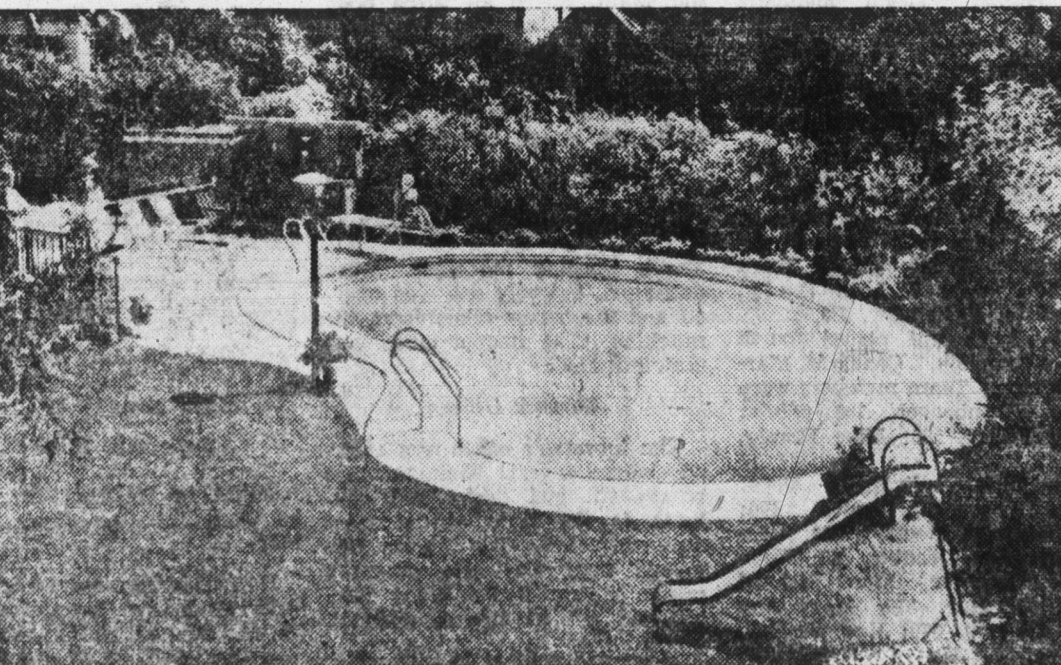
**MODERN GARDENS**, LIKE THIS Japanese arrangement, are easy to maintain. Made up of fountain steps, interesting foliage, pebbles and stones, it's located in a patio protected by a handsome plank and beam roof of contrastingly finished Western Pine region wood.



**SHADE SEEKERS** will appreciate outdoor area boasting three different and decorative ways to screen out sun. Vertical screen, roof extension, and canopy over walk are Western Pine region wood.



**PLAN A PATIO** to make more room for family dining, entertaining or relaxing. Patio shown was roofed with vinyl building panels in white to match siding of house. Flagstone flooring, aluminum screen siding and decorative furnishings complete the indoor-outdoor living area. From Allied Chemical's Barrett Division.



**GET IN THE SWIM** RIGHT IN YOUR OWN BACKYARD by installing an easily maintained pool. This one features stainless steel sidewalls, ladders and accessories that will withstand weather and wind without pitting or discoloring. Complete your private playground with poolside cabana, lounge furniture and lighting.

### For The Finest In Heating & Cooling

buy from us with **CONFIDENCE** Look for this emblem



**ELECTRIC HEATING-COOLING DEALER**

INSTALL AN **AMERICAN FURNACE ELECTRIC FURNACE** WITH **ELECTRONIC FILTER AND WHOLE HOUSE AIR CONDITIONING**

**HAUGK PLUMBING AIR CONDITIONING HEATING**

209 N. 13th Street

Phone 3-3316

CALL US FOR A **FREE HEATING SURVEY**

**NOW..... DURING OUR PRE-SEASON SALE**



**SAVE MONEY 3 WAYS WITH A GENERAL ELECTRIC GAS FURNACE**

1. LOW FIRST COST
2. LOW OPERATING COST
3. LOW FINANCING COST

**Ashbauchers' Tin Shop**

Established 1915

116 N. 1st St.

Phone 3-2615

Decatur, Ind.