

## It's Smart to Put Roof At Top in Remodeling

The top of your house should be at the top of your remodeling list, if you have an older home. It's smart to start with the roof, because it's usually the



A NEW ROOF adds to the appearance and value of an older home. Here, asphalt shingles are applied.

largest unbroken expanse of a house. Brightening this big area with a complete, new, colorful roof can't help but improve the over-all appearance of your home.

You'll want to consider the various types of roofing, from the viewpoints of cost, appearance and durability.

From low to moderate in price are roll asphalt and asphalt shingles, both of which are available in fire-resistant forms; wood shingles; and various types of metal roofing in sheets or shingles.

While wood shingles make a handsome-looking roof, it's best to check building codes, since in some areas the use of wood roofing is prohibited as a fire hazard.

Metal roofing offers great durability. Some types may need painting, or exposure to industrial fumes or to salt air could cause corrosion.

Aside from low cost, unbroken coverage for wide areas is the chief advantage of roll asphalt. When it has been coated with mineral granules, it is fire-resistant.

Asphalt shingles offer a wide color range, including white, pastels, deep tones and black. Usually, they can be applied right over old roofing. They're obtainable specially treated for fire resistance and for wind resistance as well.

Moderate in costs, too, are roof surfacing such as asphalt or tar, applied while hot and completed with gravel or crushed stone. They provide unbroken coverage for flat or low-pitched roofs.

more costly, yet with their own advantages, are: Asbestos cement shingles, good-looking, durable and fire-resistant but lacking in resilience; slate, handsome and long-lasting but breakable and lacking in resilience; clay or cement tile, attractive but breakable.

## Open Plan, Built-in Appliances Favored by Today's Homemaker

Kitchens are getting bigger and better. What's more, open planning is being used to make them appear even larger than they actually are.

Architect Herman H. York, winner of 32 major awards for excellence in residential design, points out that today's families are demanding more spacious kitchens. This is true in spite of the fact that modern appliances such as the automatic electric range reduce kitchen drudgery and cut down on kitchen time, he said.

### Open Plan Popular

A good example of an attractive kitchen with a feeling of space is found in a house designed by York for Point of Woods in Huntington, N. Y.

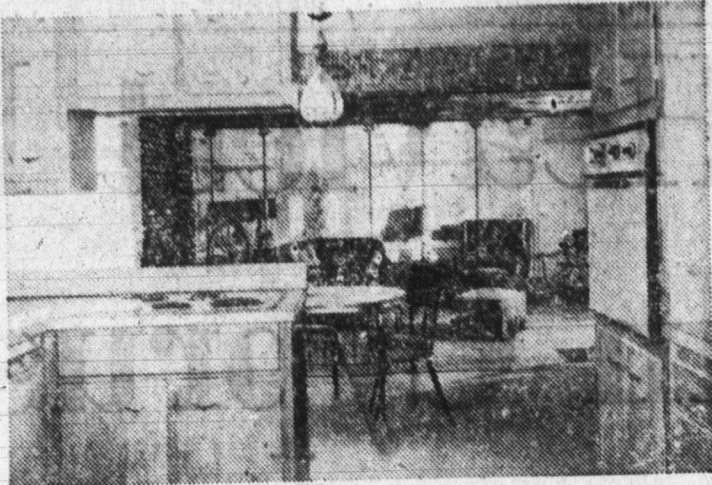
In this home, which costs around \$25,000, York establishes a continuous sweep from the kitchen, through the dinette and into a Colonial-style family room. This type of open plan is particularly popular with homemakers because it permits them to be part of family activity even while they are busy in the kitchen.

The all-electric kitchen itself is an efficient work center generously supplied with wood cabinets and counter space. It features a built-in electric wall oven and separate electric surface cooking units.

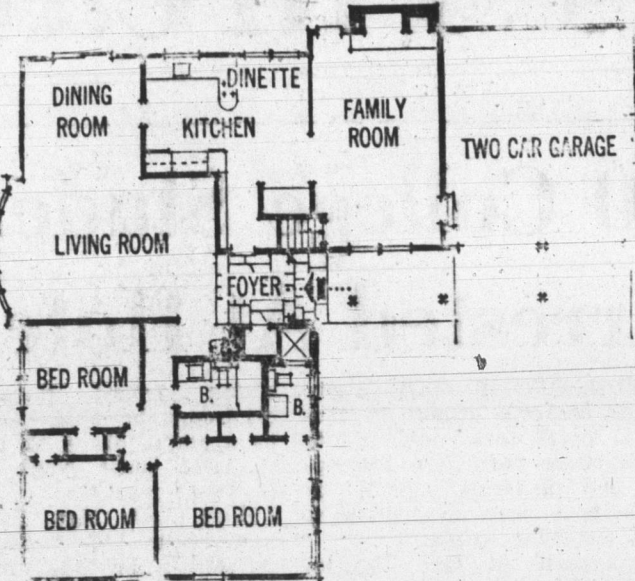
### Many Range Styles

This type of range fits in well with this particular kitchen, York said, but he added that one of the many other electric range styles might be appropriate in another kitchen. He urges families "not to follow a fad blindly but to choose the range style that is best suited to the individual kitchen."

Other types of electric ranges available include the new high-oven model, the one-piece built-in, and the traditional free-standing unit. All of these feature square corners and a built-in look, and all are available with



OPEN PLANNING adds feeling of space in this home designed by architect Herman York. Kitchen features built-in electric range.

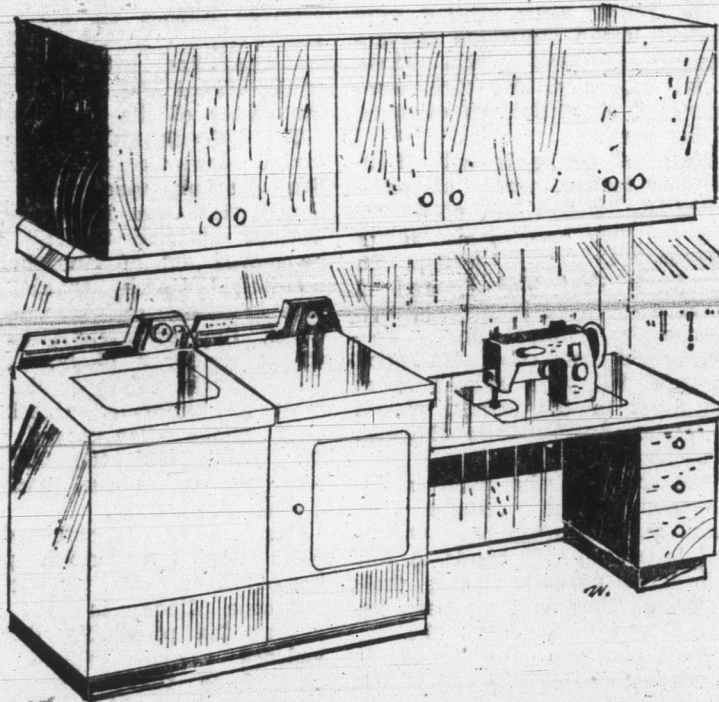


fully automatic controls.

Other electric appliances in York's family-style kitchen include a large refrigerator-freezer and an automatic dishwasher. A favorite feature is the spacious pantry closet built into a wall

just off the kitchen.

Further information, blueprints and specifications for this house can be obtained from Herman York, Architect, 90-04 161st St., Jamaica, N. Y., 11432. Refer to Plan SR-6.



Laundry Sewing Center

Clothing repairs can be made on the spot when laundry room includes a sewing center. Drop-down machine head converts desk to office space or countertop for folding, sorting. Compact built-ins are clear Douglas fir lumber, with light fixture installed under top cabinets.

## Old Cottage Renovated With Royalcote Panels

It's great to have a cottage hideaway within easy driving distance for long weekends, parties, vacations, family reunions — at any time of the year.

Nowadays, with improved highways and lakes and other quiet areas abundant, anybody can do what a Chicagoland family did.

Deciding to have a close-in second home, this family bought an old cottage on a lake within quick driving distance of their No. 1 residence.

Dad and his two teen-age sons removed a partition and then resurfaced the old, cracked walls with factory-finished Masonite Royalcote woodgrained hardboard.

Now the place looks like a million dollars, but the cost was surprisingly low. The three "boys" found it a pleasure to put up these random-grooved panels right over the old walls. Mom's enthusiastic because they are so easy to keep clean — a seasonal once-over with a damp cloth.

## Verticality, Color Change Long Hall

There are few ways to make a long hall in a bedroom wing look anything but long. But there are ways to soften the bare look, as one Portland, Oregon, architect has discovered.

He paneled the walls in vertical tongue-and-groove western red cedar narrow boards to give a pattern of verticality to the space. Then, the inspired touch, he painted each bedroom door and door frame a different but lively color.

The effect is dramatic. Each door looks like a brightly colored picture at a distance and serves admirably to break up the lengthy monotony of the plain hall.

### Record Wall



Spacious storage for music albums is recessed in west coast hemlock paneled wall. Depth of record compartments is one inch less than albums to facilitate grasping them. Slant-rack at bottom holds magazines and jackets of records being played.



WORK BEGINS—The rear of the Boston Store, recently purchased by Holthouse Drug Co., is seen above before that portion of the building was torn down.

(Photo by Cole)

## Home Reborn With New Face

A sound and sturdy older home with old-fashioned lines can be reborn with a bit of face lifting.

The enterprising architect who will accept remodeling jobs is showing the way to create things of beauty from former wall flowers of the home set. He is the plastic surgeon of the home industry, and what he is doing to put a new face on some ugly old jobs, you wouldn't believe.

Most of these homes are sound as a dollar inside, but their chins have slipped. The problem is to prop up the chin, get a new outlook on life, and keep within a reasonable budget.

One of the most startling systems is to take off old-style gimcracks, dormer windows and such and to substitute a streamlined, modern facade.

This is easier to do than it sounds. Oftentimes the front elevation is the most critical and the use of some new exterior siding, with small windows enlarged to match their neighbors, and a different roof line works wonders.

Some of the best face lifting jobs have been done by simply applying new wood siding, by using rough sawn wood, by detailing cedar screens around some windows. Wood is so flexible, in the hands of a skilled architect, and can be used so effectively that the remodeled house has no resemblance to the old.

What you do with such a remodeling, the lumbermen point out, is to raise the standard of your neighborhood, improve the appearance of the resale value of your home, and create something in which you can have pride.

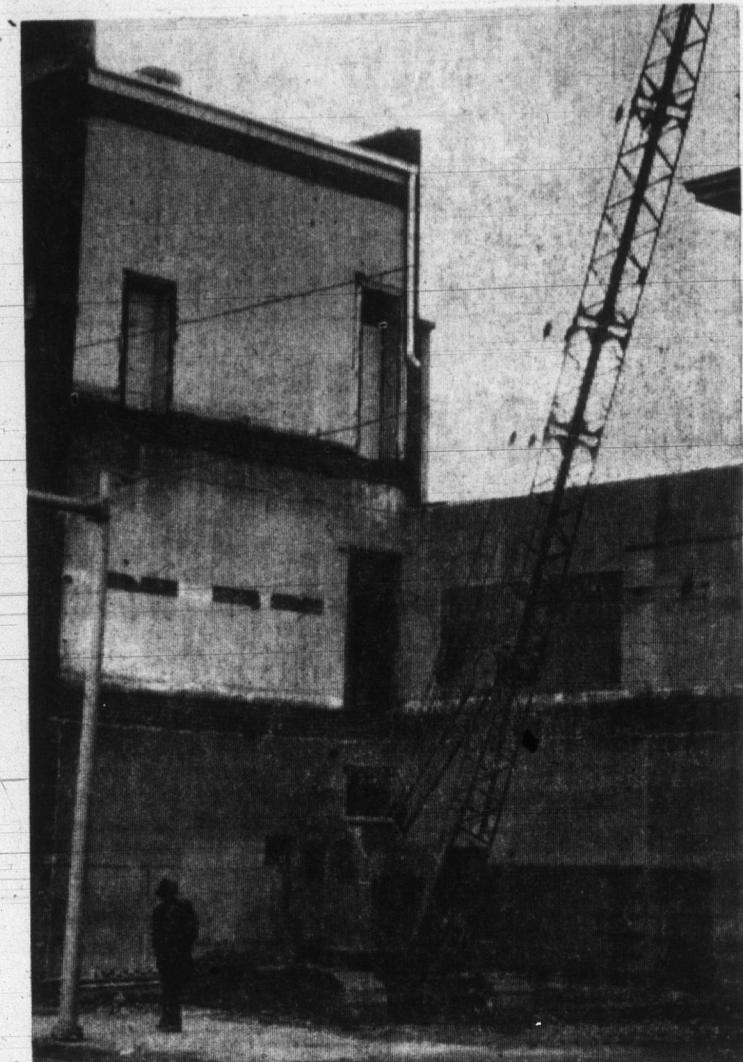
## Wallpapers Help Add or Subtract Room Proportion

Room too small or too large? Use wallpaper to help you create a look that seems to add or subtract space.

An airy, light paper seems to add an amazing amount to space add an amazing amount of space the design isn't the important part of this eye-deceiver — a fairly large motif will look fine if it is widely spaced on a light background.

Another good way to add a spacious feeling is to cover one wall with a scenic mural. There are country meadows, seascapes, views of the Orient, quaint pastoral scenes of ancient Greece, Colonial villages with tree-lined streets — an elegant variety to give focus to any room in the home.

To pull the room down in size, choose darker colors in a close, all-over design for the walls, and a deeper tone for the ceiling.



THE REAR of the former Boston Store is pictured after being razed. The building will be remodeled for an addition to the Holthouse Drug Co. store adjacent to it.

(Photo by Cole)

## DECATUR READY-MIX CONCRETE

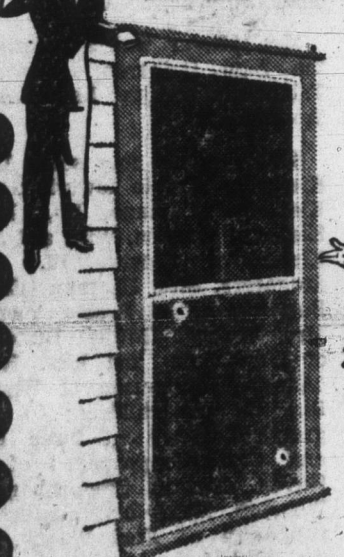
FOR YOUR NEXT BUILDING PROJECT

CALL 3-2561

## DECATUR READY-MIX CORP.

E. Oak & Fornax Sts. Decatur, Ind. PHONE 3-2561

## HUMPHREY TENSION SEALED Aluminum



COMBINATION STORM WINDOWS AND SCREENS

- Receiving wide acceptance in 28 states.
- Highest quality ALUMINUM. 100% rust-proof.
- Self-lubricating. Smooth-gliding action.
- Completely maintenance free — lasts a lifetime.
- Narrow streamlined appearance. No ugly screws showing.
- Self-storing. No seasonal changeover.
- Gives no-draft, rain-free ventilation.

SEE FOR YOURSELF

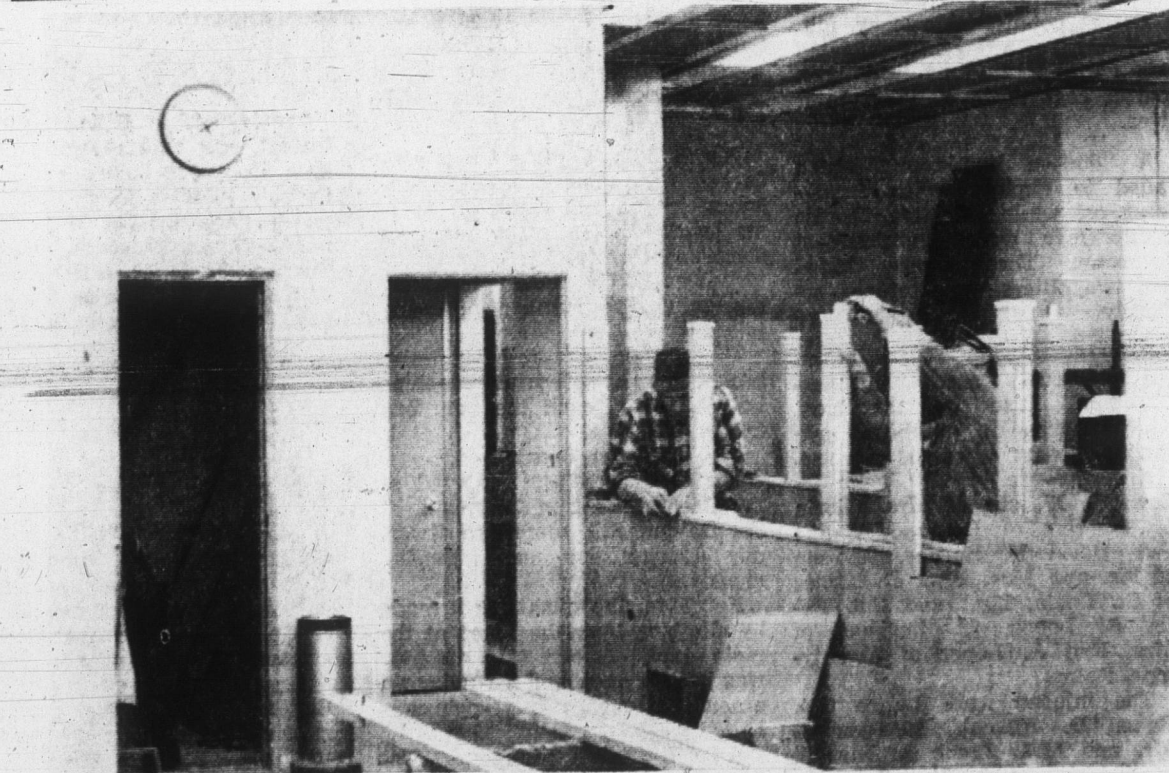
• Three removable inserts... Outer glass insert... Movable glass panel insert. Indirect draft-free ventilation in any weather.

EASY TERMS • To Suit Your Budget • For Free Estimate, Call—

KOHNE WINDOW & AWNING CO.

711 Winchester St.

Phone 3-2259



REMODELING CONTINUES — Remodeling of the city hall's ground floor is nearing completion. Contractor Chalmers Barkley, who built the new police station, is handling the work. After the first floor is completed, the city offices will be moved down stairs again and the second floor will be remodeled.

(Photo by Cole)

## For The Finest In Heating & Cooling

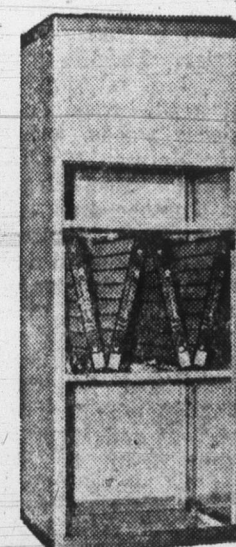
buy from us with CONFIDENCE Look for this emblem



I&M RECOMMENDED ELECTRIC HEATING-COOLING DEALER

INSTALL AN

AMERICAN FURNACE ELECTRIC FURNACE WITH ELECTRONIC FILTER AND WHOLE HOUSE AIR CONDITIONING



HAUGK PLUMBING AIR CONDITIONING HEATING

209 N. 13th Street

Phone 3-3116