

Soft - Pedal The Music By Sound - Conditioning

While music may be a joy, even the most patient parents get a little edgy when junior practices his trombone or daughter does her voice exercises. And there's another problem in the musically minded family. The only time Dad can listen to his stereophonic hi-fi system seems to be when the children are ready for bed.

The answer? A music room. A special room for practicing or listening can solve a lot of

problems. In a properly sound-conditioned room, a loud cornet will be virtually inaudible to the person in the next room, while a hi-fi system can be played at increased volume to bring out the more delicate shadings of the music.

Unused attic space or the family room is relatively easy to sound-condition.

First step in creating a music room is the installation of acous-

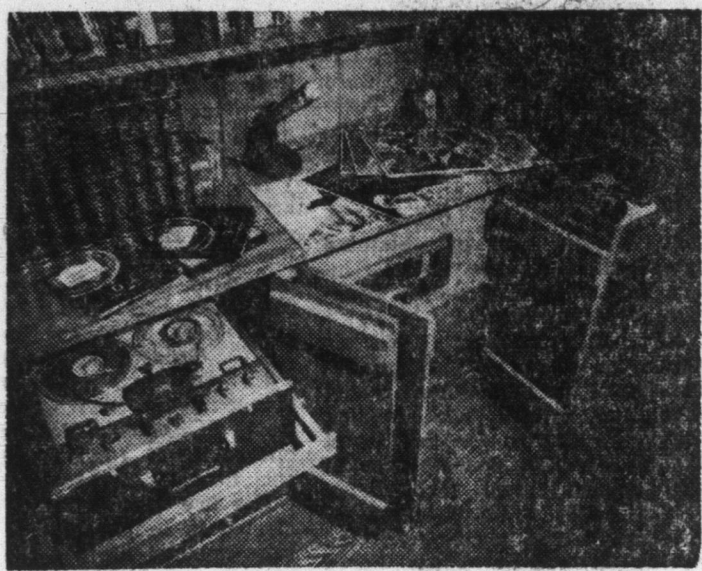
tical ceiling board tile comes in scores of colors and designs.

If a room has an even, uncracked ceiling, the acoustical tile can be applied with adhesives. If the plaster is uneven, cracked, or if "ceiling" consists only of joists, wood furring strips can be used, and the tile stapled or nailed to the strips. The second step in

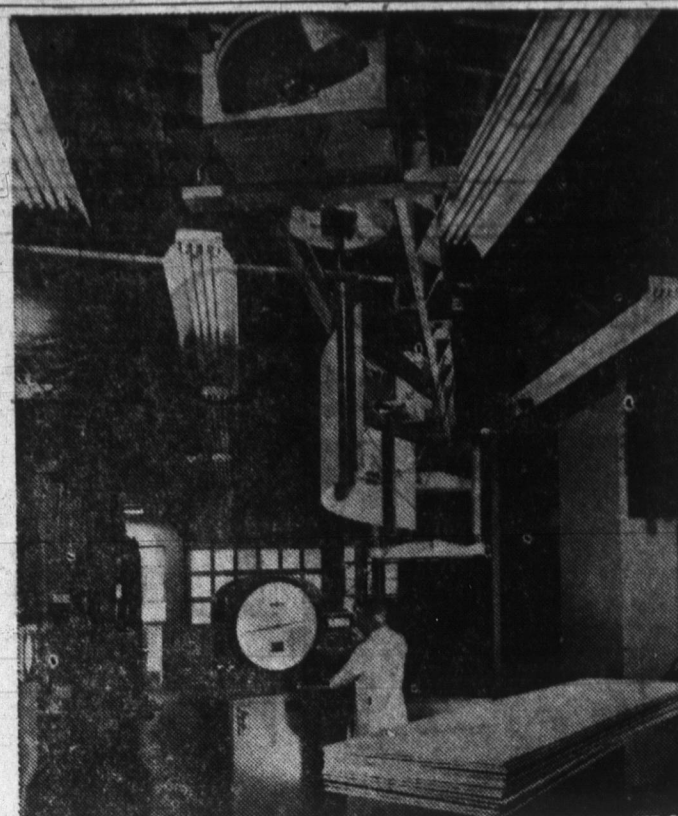
sound control is to isolate the music room. If you have a choice, try to locate it away from quiet areas such as living room, bedroom and study. Next, the walls of the music room must stop the flow of sound. If you are building a new home or adding a room, you can specify sound-deadening insulation.



PRACTICE MAKES PERFECT, and won't annoy other members of the family when playing and listening takes place in an isolated music room sound-conditioned with acoustical tile.



STOP THE MUSIC from interfering with family routine by installing stereo components in sound-conditioned room. For decorative touch, place them in handsome built-ins. These are Western Pine region wood.



In the "good old days" of home building the buyer spent a lot of money for materials that added little, if anything, to the structural adequacy of his home — overbuilding consumed a lot of material, but didn't add one square inch of living space. Today research at laboratories such as this one at the Douglas Fir Plywood Association headquarters in Tacoma, Washington, is making it possible for builders to use materials efficiently and to give the home buyer bonuses in the form of more floor space.

Housing Research Adds Value for Home Buyers

They don't build houses the way they used to.

They build them better.

According to Douglas Fir Plywood Association, the housing industry today is under going rapid technological changes which are having a profound effect on the way Americans are sheltered. The changes are broad in nature, affecting not only the materials with which a home is built, but also the way it looks, and the way it is used.

Regarding this rapidly expanding fund of building technology, Daniel B. Grady, chairman of the National Association of Home Builders' technical committee, says that there have been more changes in home building in the last 10 years than in the previous half century. "And," he adds, "there are likely to be more changes in the next five years than in the last 10."

Speaking at the plywood association's coatings seminar last fall (a meeting called to display plywood products coated with acrylics, vinyls, epoxies, elastomers,

and metals) Grady explained the reasons for the changes in his industry.

"The new home market is intensely competitive," he said, "with competition both from other demands on the consumer dollar and from the variety of homes offered by builders in the same community."

"And, the demands of the American public have changed. The shelter needs of the population are pretty well satisfied — people don't buy homes anymore just because they want to get out of the rain. The new home buyer is more discriminating and demands more home performance for his dollar."

The result is that builders and building materials manufacturers are intensifying research in building methods that will deliver more home value for the same dollar.

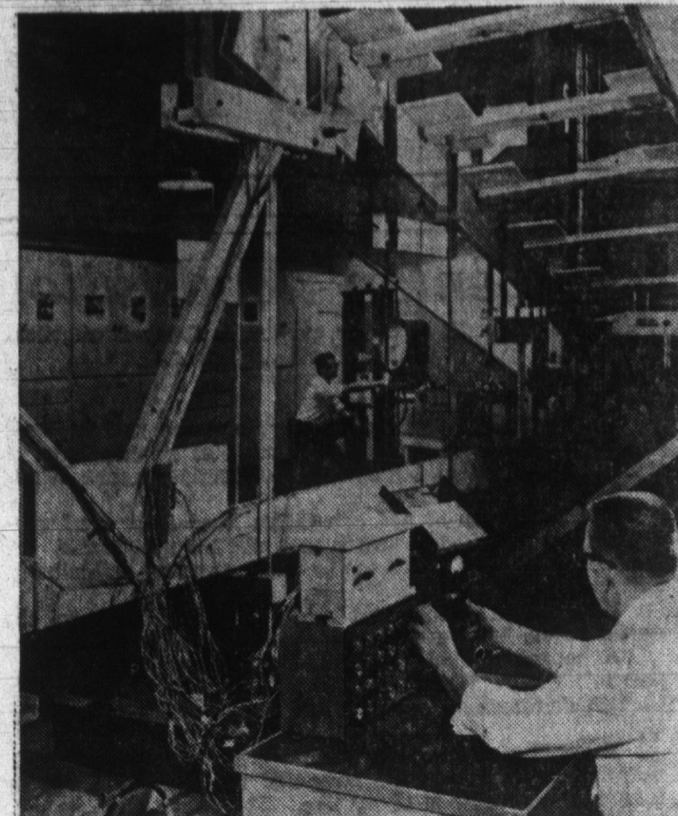
What does this upheaval in the building market mean to the average home buyer? Simply this, says Grady: "Builders are making every effort to improve productivity and thereby increase values. During the last three years, for instance, the median price of a typical house and lot has remained almost constant — that is, about \$15,000. This is so in spite of increasing labor costs, increasing land prices. In addition, this typical house has increased slightly in size and contains more mechanical and electrical equipment, more appliances, and new luxury items. Technological progress is beginning to be clearly evidenced in the market place."

Large Basement

One family with many hobbies converted their basement into an all-purpose family room by compartmentizing. They used wood cabinets, made of durable Douglas fir to establish special areas about the basement for stamp sorting, study, hunting trophies, home office, Boy Scouting headquarters.

Cut Lawn Time

If you are a golfer and dislike investing spare time in lawn care, why not plan a beautiful wooden deck which can cover a generous part of the yard? You can build this simply or elaborately of Douglas fir or western red cedar. You don't have to mow a wood deck.



Research makes it possible to get more value in modern homes. An example is this experimental trussed rafter which Douglas Fir Plywood Association engineers designed with a computer instead of conventional mathematics. Trusses cut building materials costs, labor costs, and at the same time increase design freedom by eliminating interior load bearing walls. An engineered plywood and 2 x 6-inch lumber truss can span more than 40 feet. The longest practical span using ordinary 2 x 6-inch rafters and a 2 x 12-inch joist would be approximately 23 feet.



BEHIND CLOSED DOORS there's a place for everything, including hi-fi set and records, in this handsome storage wall-bookcase unit of ponderosa pine.

EXPERIENCE

- P -
- L -
- U -
- S -

LATEST EQUIPMENT

- P -
- L -
- U -
- S -

QUALITY MATERIAL

- E -
- Q -
- U -
- A -
- L -
- S -

YOST READYMIX CONCRETE

10% Discount ON ALL READYMIX CONCRETE

YOST

GRAVEL READYMIX INC.
Phone 3-3114
R. R. 1, DECATUR

Window Sills

Check your window sills. If they show evidence of wear from winter weather, you have work to do, and you can do it yourself. Scrape off loose paint and make a smooth surface. Then apply two or more coats of good all-weather paint to match the rest of your trim. The sills thus cared for will last for many extra years.

High Siding

Wood siding should be at least six inches above exposed earth on the exterior of a structure. This insures long wear of siding like Douglas fir or western red cedar.

PROOF-THAT HUMPHREY
Tension Sealed
ALUMINUM COMBINATION STORM WINDOWS



ARE TODAY'S BEST BUY

See these Features:

* REMOVABLE SILL FOR EASY, QUICK CLEANING
* MAINTENANCE FREE, NO PAINTING, NO STORING REQUIRED

FLOATING CHANNEL ASSURES SMOOTH ACTION

* WILL NOT RUST
* MODERN STREAMLINED APPEARANCE, NO UGLY SCREWS SHOW
* CUSTOM-MADE TO INSURE A PERFECT FIT

CALL FOR FREE ESTIMATE

KOHNE

Window & Awning Co.
711 Winchester St.
Phone 3-2259

Choose New Range With Care—It's a Sound, Lasting Investment

If you're shopping for a new range this year, don't be an impulse buyer. Remember you may be using it for up to 15 years, so take time to look around carefully before you buy.

This advice is given by Constance Burgess, Extension Home Management Specialist of the University of California, in a new bulletin, "Choosing and Using Your Household Range," who points out that probably no other large appliance offers so many choices of size, style, accessories, and price.

New electric ranges, for instance, may have pushbutton or rotary infinite heat controls. Some have a high-speed surface element that gives instant heat for short, fast cooking at high temperatures. Many new ranges have one or more of the thermostatically controlled surface elements that maintain the right cooking temperature without being watched.

Some ranges have low-temperature controls that turn oven heat down when food is cooked and hold it for several hours at serving temperature. Electric oven thermostats can be set as low as 150 degrees, Miss Burgess points out.

Although on and off oven timers are not new, they've been improved to be easy to use. Removable automatic rotisseries, automatic meat thermometers, and griddles are also among the features to look for on new electric ranges.

As for styles, "New trends in ranges are exciting," Miss Burgess says. "You'll see an amazing array of sizes, shapes, and colors."

Electric ranges give the highest heat efficiency, which means



HERE ARE FOUR BASIC TYPES of electric ranges to consider if you're updating your cooking: top left—free-standing unit with double ovens; top right—high-oven range with double ovens and slide-out surface elements; bottom left—built-in double ovens and separate counter cook-top; bottom right—one-piece built-in.

the kitchen stays cooler.

Manufacturers of electric ranges point out that many of the deluxe features introduced a few years ago are now found on medium-priced models.

Ask yourself what you like about your present range and what would you like to change? You may want a double oven,

more automatic controls, or a range that's easier to clean. Appliance manufacturers have made the new electric ranges easier than ever to clean. Food burns off the cooking elements, automatic controls help prevent burn-ons and spill-overs, and improved design makes them easy to clean inside and out.

Ultra-Modern Range Extra Clean

Cleanliness is a modern concept, and so is electric cooking. The two have been combined in the 1964 electric ranges to give homemakers not only the most modern, efficient cooking, but the cleanest.

This year's electric ranges are equipped with a variety of features that make them easy to clean. They are also designed to

stay cleaner during cooking. Features to look for in electric ovens, for instance, are rounded corners, lift-up heating elements, spatter-resistant broiler pans. Electric ovens have other easy-clean features to choose from such as removable foil linings, drawer-like pull-out oven liners, and teflon-coated removable walls. Some ovens clean them-

selves with high heat. Oven doors may drop down or be removable. Cleanliness features of electric cook-tops include raised outer rims to contain spilled liquids, removable parts that can be washed at the sink or in the dishwasher, and elements that can be removed or lifted up to clean underneath. All elements are self-cleaning.



LESS HOUSEWORK
BETTER APPETITES

Since we installed
GENERAL ELECTRIC
CENTRAL HEATING & COOLING

ASHBAUCHERS' TIN SHOP

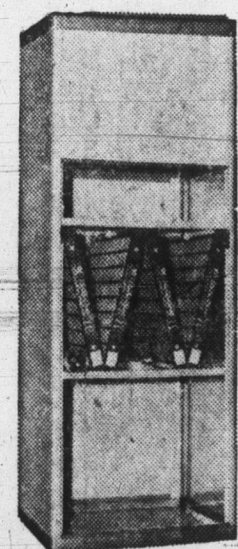
Established 1915
116 N. 1st St. Decatur, Ind. Phone 3-2615

For The Finest In Heating & Cooling

buy from us
with
CONFIDENCE
Look for this
emblem



INSTALL AN
**AMERICAN FURNACE
ELECTRIC FURNACE**
WITH
**ELECTRONIC FILTER
AND
WHOLE HOUSE
AIR CONDITIONING**



HAUGK PLUMBING
AIR CONDITIONING
HEATING
209 N. 13th Street Phone 3-3316