

### 20 Years Ago Today

Feb. 5, 1944 — The annual Boy Scout banquet will be held at the K. of P. hall here Tuesday evening, with R. L. Van Horn, Fort Wayne Boy Scout executive, as the speaker.

Mrs. G. Remy Bierly has re-

turned home after visiting her daughters at Corpus Christi, Tex.

William A. Workinger, 59, night merchant policeman and retired farmer, died after an extended illness.

Several Adams county men will attend a 16-county district meeting of Jersey breeders at Fort Wayne next week.

Adams county high school basketball results:

Auburn 39, Decatur Yellow

Jackets 37; Fort Wayne Concor- dia 43, Decatur Commodores 34; Hartford 39, Monroe 31; Hoagland 35, Monmouth 33; Geneva 54, Kirkland 31; Berne 47, Hartford City 37; Pleasant Mills 76, Jef- ferson 13.

### Indianapolis Livestock

INDIANAPOLIS (UPI)—Live- stock:

Hogs 5,500; uneven, mostly

steady to strong and 25 higher, 1-2, 190-225 lb 15.65-15.75; few 16.00-16.25; 1-3, 190-230 lb 15.25-15.75; 225-250 lb 14.75-15.25; 400 lb 12.50-13.50; 2-3, 400-600 lb 11.75-12.50.

Cattle 1,100; calves 25; steers untested; heifers fully steady; choice steers 22.25-23.00; aver- age and high choice and a few prime 23.50; mixed good and low choice 21.50-22.25, few 22.50,

good 20.00-22.00; choice heifers 21.50-22.00; high choice 2.50; good and mixed good and low choice 19.00-1.50; good 19.00-21.00; cows strong; utility and commercial 12.00-13.50; bulls fully steady; cutter to commer- cial 15.00-18.00; vealers fully steady; good and choice 29.00-35.00; individual choice 36.00.

Sheep 300; steady; choice and prime woolled lambs 20.00-20.50, few 21.00; good and choice 18.00-20.00.

### Rose Bowl Parade Shown Lions Club

Slides of the 1963 Rose Bowl parade in Pasadena, Calif., were shown to the Decatur Lions club members Monday evening by Kenneth Erhart, of Krick-Tyndall Co.

The meeting started with the pledge to the flag by Cub Scout Mike Erhart, as an introduction

to Boy Scout week, which starts Saturday.

All members are asked to make a special effort to attend next Monday's meeting, at which time renewal of the charter of the Lions Scout troop 62 will be dis- cussed. The scoutmaster, Charles Stonestreet, has resigned, and unless more interest can be work- ed up in the troop the Lions club may lose its scout charter.

Following the meeting, assist- ant district commissioner Steve Everhart met with Roger Gentis and the other members of the scout committee present.

The Lions club also voted to give \$50 to the Decatur Commu- nity Fund.

Joe Larmore, of Bluffton, at- tended the meeting as a guest.

### Chicago Livestock

CHICAGO (UPI)—Livestock: Hogs 5,500; steady to weak; No 1-3 190-230 lb 15.00-15.75; 100 head No 1-2 200-220 lb 16.00; No 1-3 220-250 lb 14.50-15.25; No 2-3 250-270 lb 14.00-14.75; 270-300 lb 13.50-14.25.

Cattle 10,500, no calves; slaughter steers 750 lb down steady, heavier weak to 25 low- er, spots 50 off, heifers mostly steady; 2 load prime 1250 lb slaughter steers 23.25; bulk high choice and prime 1250-1386 lb 22.25-22.75; choice 950-1250 lb 21.50-22.50; several loads choice 950 - 1100 lb 22.75 - 23.00; 1250 - 1350 lb 21.00-1.75; 1350-1450 lb 20.00 - 21.00; good 900 - 1200 lb 2.00-21.75; load high choice and prime 83-950 lb - heifers 22.50; few loads mixed choice and prime 1050-1075 lb 22.00; choice 800-1070 lb 21.25-22.00; good 20.00-21.75.

Sheep 800; slaughter lambs about steady; good and choice 80 - 115 lb woolled slaughter lambs 19.00-20.50; utility and good 16.50-18.50.

### Chicago Produce

CHICAGO (UPI) — Produce: Live poultry barred rock fry- ers 21; special fed White Rock fryers 18½-19½; roasters 23-24½.

Cheese - processed loaf 39½-44½; brick 39-45; Swiss Grade A 52-55; B 50-54.

Butter steady; 93 score 57½; 92 score 57½; 90 score 56½; 89 score 55.

Eggs steady; white large ex- tras 33½; mixed large extras 33; mediums 30½; standards 32.

THINKING ABOUT CUTTING YOUR BIGGEST FOOD EXPENSE?

Save More ON

# "SUPER-RIGHT" MEATS

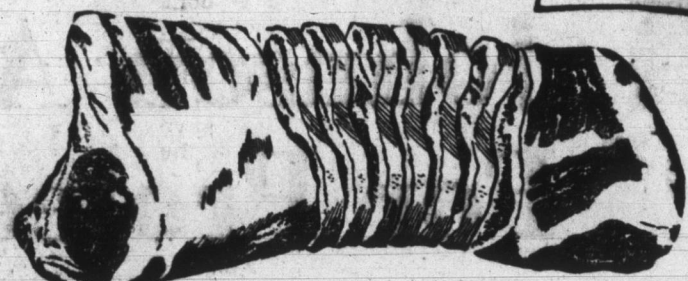


"SUPER-RIGHT" QUALITY

## PORK LOINS

7 RIB END	LOIN END	WHOLE LOINS
<b>25<sup>c</sup></b>	<b>33<sup>c</sup></b>	<b>39<sup>c</sup></b>
lb.	lb.	lb.

FIRST CUT PORK CHOPS	lb.	35 <sup>c</sup>
COUNTRY STYLE SPARERIBS	lb.	35 <sup>c</sup>
PORK CHOPS	CENTER RIB CUTS	lb. 59 <sup>c</sup>
PORK CHOPS	CENTER LOIN CUTS	lb. 69 <sup>c</sup>
BRAUNSCHWEIGER	CHUNK STYLE	lb. 39 <sup>c</sup>
ALL MEAT BOLOGNA	CHUNK STYLE	lb. 39 <sup>c</sup>



"SUPER-RIGHT" QUALITY

## SMOKED HAMS

Whole Ham or Butt Portion	lb.	49 <sup>c</sup>	Center Cut Ham Slices	lb.	89 <sup>c</sup>
---------------------------	-----	-----------------	-----------------------	-----	-----------------

## BEEF RIB ROAST

Beef Rib Roasts	lb.	79 <sup>c</sup>	Beef Rib Steaks	lb.	89 <sup>c</sup>
-----------------	-----	-----------------	-----------------	-----	-----------------

## Broiler Turkeys

US. GOVT. GRADE "A" Fresh	lb.	29 <sup>c</sup>
---------------------------	-----	-----------------

## Cut-Up Fryers

Chuck Wagon	1¼-lb.	89 <sup>c</sup>
-------------	--------	-----------------

## PEACHES

A&P Brand Whole Kernel—Case of 24,	\$2.35
------------------------------------	--------

Golden Corn	1-lb., 1-oz. can	10 <sup>c</sup>
-------------	------------------	-----------------

Soda Crackers	1-lb. pkg.	19 <sup>c</sup>
---------------	------------	-----------------

Glamalon First Quality Mesh	pr.	39 <sup>c</sup>
-----------------------------	-----	-----------------

Seamless Nylons	pr.	39 <sup>c</sup>
-----------------	-----	-----------------

Tomato Soup	ANN PAGE 10½-oz. can	10 <sup>c</sup>
-------------	----------------------	-----------------

Freshlike Corn	GOLDEN WHL. KERNEL 4 cans	59 <sup>c</sup>
----------------	---------------------------	-----------------

Freshlike Peas	TENDER, SWEET 4 cans	75 <sup>c</sup>
----------------	----------------------	-----------------

Freshlike Beans	REG. OR FR. STYLE 4 cans	69 <sup>c</sup>
-----------------	--------------------------	-----------------

Pink Salmon	COLD STREAM 1-lb. can	55 <sup>c</sup>
-------------	-----------------------	-----------------

## SUNNYBROOK GRADE "A" LARGE EGGS

# 49<sup>c</sup>

DOZ.

Crestmont Sherbet	ORANGE half gal	49 <sup>c</sup>
-------------------	-----------------	-----------------

Silverbrook Butter	A&P's 1-lb. brick	69 <sup>c</sup>
--------------------	-------------------	-----------------

Cheerio Ice Cream Bars	2 pkgs. of 6	59 <sup>c</sup>
------------------------	--------------	-----------------

## Fish Portions

2 -lb. pkg.	99 <sup>c</sup>
-------------	-----------------

Haddock Dinners	CAP'N JOHN ca.	49 <sup>c</sup>
-----------------	----------------	-----------------

Cleaned Smelt	READY TO COOK lb.	25 <sup>c</sup>
---------------	-------------------	-----------------

Sliced or Halves	3 1-lb. 14-oz. cans	\$1.00
------------------	---------------------	--------

Iona Brand Sweet Peas	4 1-lb., 1-oz. cans	49 <sup>c</sup>
-----------------------	---------------------	-----------------

Iona Brand Tomatoes	4 1-lb. cans	49 <sup>c</sup>
---------------------	--------------	-----------------

Hunt's Catsup	2 14-oz. bot.	29 <sup>c</sup>
---------------	---------------	-----------------

Luncheon Meat	"SUPER-RIGHT" 12-oz. can	37 <sup>c</sup>
---------------	--------------------------	-----------------

Ann Page Spaghetti	OR ELBOW MACARONI 2-lb. pkg.	39 <sup>c</sup>
--------------------	------------------------------	-----------------

Dog Meal	DAILY GRAVY-TYPE 25 bag	\$2.29
----------	-------------------------	--------

Chunk Tuna	CHICKEN OF THE SEA 6½-oz. can	31 <sup>c</sup>
------------	-------------------------------	-----------------

Biscuits	PILLSBURY OR BALLARD 3 8-oz. pkgs.	29 <sup>c</sup>
----------	------------------------------------	-----------------

## POTATOES

YOUR CHOICE	2 -lb. pkg.	39 <sup>c</sup>
-------------	-------------	-----------------

A&P Grape Juice	4 6-oz. cans	69 <sup>c</sup>
-----------------	--------------	-----------------

Libby's Cooked Squash	12-oz. pkg.	12 <sup>c</sup>
-----------------------	-------------	-----------------

## AP Super Markets

Effective thru Saturday, Feb. 8

## POTATOES

25 -lb. bag	69 <sup>c</sup>
-------------	-----------------

Fresh Broccoli	LARGE BUNCHES each	29 <sup>c</sup>
----------------	--------------------	-----------------

Jonathan Apples	4 -lb. bag	49 <sup>c</sup>
-----------------	------------	-----------------

Cauliflower	LARGE SNOWY-WHITE head	33 <sup>c</sup>
-------------	------------------------	-----------------

Cole Slaw	A & P BRAND FRESH 2 8-oz. pkgs.	29 <sup>c</sup>
-----------	---------------------------------	-----------------

## SAVE!

JANE PARKER ENRICHED WHITE

## Bag O' Bread

5 1¼-LB. LOAVES	99 <sup>c</sup>
-----------------	-----------------

Lesser Quantities Sold at Regular Retail 10000

Jane Parker 8 Inch APPLE PIE	each	39 <sup>c</sup>
------------------------------	------	-----------------

Coffee Cake	JANE PARKER DATE-FILLED	each 33 <sup>c</sup>
-------------	-------------------------	----------------------

Hot Cross Buns	JANE PARKER	pkg. of 9 39 <sup>c</sup>
----------------	-------------	---------------------------

7c OFF LABEL	11c OFF LABEL	5c OFF LABEL	8c OFF LABEL	8c OFF SANDWICH	HUNT'S BRAND
--------------	---------------	--------------	--------------	-----------------	--------------

Blue Cheer	Thrill Liquid	Giant Tide	Vel Liquid	Baggies	Tomato Sauce
------------	---------------	------------	------------	---------	--------------

3-lb., 5½-oz. pkg. 68 <sup>c</sup>	1-qt. bot. 70 <sup>c</sup>	3-lb., 1¼-oz. pkg. 70 <sup>c</sup>	1 pint 6-oz. bottle 49 <sup>c</sup>	pkg. of 100 47 <sup>c</sup>	2 15-oz. cans 35 <sup>c</sup>
------------------------------------	----------------------------	------------------------------------	-------------------------------------	-----------------------------	-------------------------------

### PRESTIGE

THIS EMBLEM

Identifies your WELCOME WAGON SPONSORS...

Signs of prestige in the business and civic life of your community.

For information, call 3-4338

### WELCOME WAGON

### REAL ESTATE AT AUCTION

We, the undersigned, will sell at auction, 2 blocks south, 2 blocks west of the Methodist Church in Willshire, Ohio, on

## Saturday Morning, Feb. 15, 1964

at 10:30

### REAL ESTATE

This is a nice 2 bedroom home with closet, big living room with wall to wall carpet, big kitchen with a lot of cupboards, nice bathroom, utility room, and 1½ car garage attached to home. This home is on a nice big lot with shade trees and plenty of garden space. Have ½ share in a well for water. This home is in good repair, ready to move in.

For further information on home or to see home, contact the auctioneers.

TERMS—20% down on sale day—balance when abstract and deed are delivered.

Possession: Immediate after sale day.

## Victor & Elsie Kuhn, owners

Sale Conducted by  
The Kent Realty & Auction Co.  
Ohio License No. 0995

### SALE CALENDAR

FEB. 6—5:00 p. m. Little Indiana Tourist Home, 2029 Maumee Ave., Fort Wayne, Ind. 10 Rooms of modern furniture. Some antiques. Walter Wiegmann, Orville Sturm, auctioneers.

FEB. 7—11:00 a. m. Mr. and Mrs. Ervin Fiechter, owners. 1 mile north of Bluffton, Ind. on St. Rd. 1 to county road 100 N (Dustman Road) then 2½ miles east. Tractors, harvesting equipment, farm implements, miscellaneous. Ellenberger Bros., auctioneers.

FEB. 8—12:30 p. m. Ivan Habegger, owner. 1218 Clark Street, Berne, Ind. Furniture. Phil Neuenschwander, Maynard Lehman, auctioneers.

FEB. 8—1:30 p. m. Bargain Barn, Pleasant Mills, Indiana. Closing out sale all merchandise. Richard Byer, auctioneer.

FEB. 8—1:00 p. m. A. P. Boardman, owner. 223 North 1st street, Decatur, Ind. Furniture auction. Sale conducted by The Kent Realty & Auction Co., Gerald Strickler, D. S. Blair, auctioneers. C. W. Kent, sales mgr.

FEB. 8—10:30 a. m. Mr. and Mrs. Carl G. Bieberich, owners. 6 miles west of Decatur on US 224 to Magley, then south 1 mile, then east to 1st farm. Dairy cattle and farm machinery. Walter Wiegmann, Orville Sturm, auctioneers.

FEB. 12—10:00 a. m. O. L. Bryant estate, owners. 2½ miles north of Ossian, Ind. on St. Rd. 1, then 1½ miles east on Wells-Allen county line. Late model farm equipment and miscellaneous. Ellenberger Bros., auctioneers.

FEB. 14—11:00 a. m. Mr. and Mrs. Truman Gerber, owners. 6 miles west of Coppers Corner, then 1½ miles south. Tractors, farm implements, chickens, equipment, miscellaneous farm items, household goods. Ellenberger Bros., auctioneers.

FEB. 14—7:00 p. m. Menno Augsburger, administrator of Fanny Hales estate. 2 miles east of Monroe on St. Rd. 124, then 5 miles south and ½ mile east. Emerson Lehman, Fritz Lehman, auctioneers.

FEB. 15—10:30 a. m. Victor and Elsie Kuhn, owners. 2 blocks south, 2 blocks west of Methodist Church in Willshire, Ohio. 2 bedroom house. Sale conducted by The Kent Realty & Auction Co.

FEB. 15—4:00 p. m. Haward E. Baumgartner, commissioner for heirs of John Hoblet, Jr. 1 mile west, 4 miles south of Willshire, Ohio. 70-acre farm. Phil Neuenschwander, Maynard Lehman, auctioneers.

FEB. 15—11:00 a. m. Marlin Doctor, owner. 2 miles south of Fort Wayne on U. S. 27 to WKJG radio towers, then 2 miles east on the Maples Road. Farm equipment and miscellaneous. Ellenberger Bros., auctioneers.

FEB. 22—1:30 p. m. Mrs. Wilbert Nussbaum, owner. ½ mile east, 1¼ miles north of Berne, Ind. 80-Acre farm with 2 all modern homes. Phil Neuenschwander, Maynard Lehman, aucts.

FEB. 22—1:00 p. m. Adams Texas Service, U.S. 24, East of Huntington, Ind. 1945 Jeep and complete close out of tools and equipment. Wm. F. Schepf, Jerry Bixler, auctioneers.

FEB. 22—10:30 a. m. Mrs. Lewis (Mary) Sheets, owner. East of Decatur, Ind. on US 224 to St. Rd. 101, then north 2½ miles, then east ¼ mile. Tractors, ditching machine, combine, picker, implements, miscellaneous. Ned C. Johnson, Ed F. Sprunger, Burl Sprunger, auctioneers.

FEB. 24—12:30 p. m. Glendora Allmandinger, executrix of A. L. Allmandinger estate. 2½ miles west of Van Wert, Ohio on US 224 to school house, then south 3 miles. Dairy cattle; dairy equipment; miscellaneous. Merl Knittle, Don Mox, aucts.

FEB. 28—10:00 a. m. Frank L. Rosswurm, owner. 3 miles south of Monroeville, Ind. on St. Rd. 101, then first farm west, on Barkley Road. Farm machinery, implements, miscellaneous, antiques, household goods. Glenn C. Merica, auctioneer.

MARCH 4—12:30 p. m. Mr. and Mrs. Fred Eibling, owners. 5½ miles east of Willshire, Ohio on Rt. 81 to cemetery, then north 1 mile. Farm machinery, implements, miscellaneous. Merl Knittle, Don Mox, auctioneers.