



**TOP TEN**—The top ten places in the county cross country meet Wednesday were won from first through tenth by the boys pictured above, from right to left: John Lose, Decatur Catholic; Cagle, Adams Central; Stahly, Baumann, Habegger and Bixler, Geneva; Hirsch and Ehrsam, Adams Central; Kingsley, Berne; and Smith, Adams Central. (Photo by MacLean)

## Broncos Hand Chargers First Loss Of Season

By United Press International  
The Denver Broncos have joined the New York Jets in the American Football League's "ragamuffin clan" which delights in making life tough for their rich-kid rivals.

The Broncos "busted out" Sunday with a 24-point final period that knocked the hitherto undefeated San Diego Chargers reeling, 50-4, while the Kansas City Chiefs made an impressive formal debut in their new home by beating the Houston Oilers, 28-7.

On Saturday night, the Jets widened their first-place lead in the Eastern Division by beating the Boston Patriots, 1-24, and the Buffalo Bills scored their first victory of the season, topping the Oakland Raiders, 12-0.

Gene Mingo set an AFL record of five field goals in the Broncos' upset victory over the Chargers before 18,428 fans at Denver. Mingo's kicks travelled 37, 41, 26, 12 and 21 yards.

Mingo's three third-period field goals enabled the Broncos to overcome a 20-17 halftime deficit and move ahead, 26-20. John Hadl's 19-yard scoring pass to Keith Lincoln put San Diego in front again, only to have Denver explode with a 24-point spree within five minutes of the last period.

John McCormick hit Lionel Taylor with a 49-yard scoring pass. Don Stone ran 39 yards from scrimmage and Austin Gonsoulin raced 49 yards with an intercepted pass for three quick touchdowns that sent the Chargers down to their first defeat in four games.

Len Dawson passed for all four of the Chiefs touchdowns in the victory over the Oilers before a crowd of 27,801 at Kansas City. Dawson passed 14 and four yards to Fred Arbanas, 69 yards to Chris Burford and eight yards to Frank Jackson.

## College Football

Purdue 7, Notre Dame 6.  
Ohio State 21, Indiana 0.  
Anderson 38, Hanover 12.  
Manchester 38, Indiana Central 19.

Taylor 28, Franklin 6.  
Ball State 15, DePauw 6.  
Evansville 14, St. Joseph's 0.  
Valparaiso 19, Indiana State 14.

Butler 26, Wabash 21.  
Earlham 27, Elmhurst (Ill.) 7.  
Rose Poly 25, Eureka (Ill.) 7.  
Illinois 10, Northwestern 9.

Minnesota 24, Army 8.  
Navy 26, Michigan 13.  
Iowa 17, Washington 7.  
Colorado 21, Kansas State 7.

Missouri 24, Idaho 0.  
Nebraska 21, Iowa State 7.  
North Carolina State 7, Clemson 3.  
Miami (O.) 27, Western Michigan 19.

Cincinnati 35, Xavier (O.) 22.  
Buffalo 14, Villanova 7.  
Penn State 28, Rice 7.  
Pitt 35, California 15.

Duke 30, Maryland 12.  
Georgia 27, South Carolina 7.  
Oregon 35, West Virginia 0.  
Mississippi State 7, Tennessee 0.

Auburn 14, Kentucky 13.

## BOWLING

### Women's Major League

	W	L	Pts
Adams Trailer	10	5	15
Two Brothers	9	6	11
Colonial Salon	8	7	10
Three Kings	7	8	8
Sheets Furniture	6	9	8
Aspy Standard	5	10	8
High games — V. Smith (192-189), B. Cehler (185), M. Smitley (182), M. Scheumann (179), C. Melcher (170).			
High series — V. Smith 547.			
Splits converted — C. Fair 5-7			
I. Bowman 5-7, D. Johnson 2-7			
5-10, M. Scheumann 5-10, 5-6, 2-7			
A. Holle 4-5, E. Gallmeyer 3-10.			

### Rural League

	W	L	Pts
Schwartz Ford	12	3	15
Weber's Bath	11	4	14
Barkley Constr.	10	5	15
Adams Builders	9	6	13
Parkway "66"	10	5	13
Decatur Industries	8	7	12
Bulmahn	9	6	10
Miller Jones Shoes	8	7	9
Decatur-Kocher	6	9	8
McConnell's	6	9	8
Sheets Furniture	6	9	8
Stucky Furniture	6	9	8
Reidenbach Equip	5	10	7
Hammond's	5	10	6
McBride & Son	5	10	6
Jaycees	4	11	6
High team series — Schwartz Ford 2482.			
High game series — Schwartz Ford 848.			

High Series — D. Wynn 615, T. Merkle 557, T. Johnson 546, C. Clark 544, L. Wodren 537, R. DeLong 527, A. Chamberlain 512, J. Schnepf 511, C. Hart 508, F. Lybarger 508, F. Bienz 502, L. Berry 502.

High games — T. Berkle 224, D. Wynn 220, 214, R. DeLong 212, C. Hart 205, T. Johnson 202, C. Clark 201.

### Coffee League

	W	L	Pts
Perks	7	2	9
Coasters	6	3	9
Cubes	6	3	8
Warmers	5	4	7
Saucerettes	5	4	7
Instant	5	4	7
Cups	5	4	7
Sippers	5	4	7
Spoons	5	4	7
Cream	4	5	5
Sugar	3	6	4
Drips	3	6	4
Dunkers	3	6	3
Caffeine	2	7	2

High games — J. Voglewede 198-151, M. Tutewiler 183, S. Schnepf 170, R. Merkle 169-159, O. Jeffrey 165, A. Baker 162-161, G. Buckner 162-161, G. Buckner son 159-155, E. Roeder 157, W. 162-152, M. Geisler 161, J. Ander-Terhune 156, P. Kolter 151, M. D. Cochran 151, J. Ewell 150.

Splits converted — T. Yost 3-10, L. Affolder 3-10, F. Engle 3-10, L. Bodle 4-5 and 3-10 and 5-6, E. Bultemeier 3-10, I. Schuster 5-7, O. Jeffrey 5-10 and 5-7, P. Kolter 3-10, W. Terhune 2-7, H. Myers 5-6, J. Ewell 5-10, M. Wintergerrg 5-6-10, W. Borchers 3-9-10, S. Schnepf 3-10, L. Macklin 4-6, R. Baxter 4-6 and 2-7, G. Buckner 5-7, E. Roeder 5-10, V. Smith 4-6-7 and 5-6, G. King 3-10, S. Springer 4-5-7, P. Stucky 3-10, M. Smith 4-5-7.

### Central Soya League

Highwaymen 4, Torpedos 0; Feed Mill 4, Pinsters 0; Rockets 3, Hootenany 1; Elevator 3, Bagdads 1; Wonders 3, Spares 1; Key-stones 3, Hot Shots 1; Lab 3, Alley Kats 1; Orbits 2, Master Mixers 2.

High games and series — Men — J. Lengerich 179, B. Mies 170, K. Baumgartner 170, J. Wendell 170, E. Hutker 187, 190 (507), O. Fulton 180, L. Sharpe 172, T. Passwaters 170, R. Wable 173, R. Christen 192, 187 (522), E. McCullough 176, R. Hoffman 171, 188, G. Simons 181, P. Sheets 175, J. Strawn 171, 176, G. Rydell 175, C. Stonestreet 212 (547), D. Lengerich 188 (515), L. Meyer 176, 176 (516), J. Price 198, 173 (540), J. Bayles 182, 173, D. Cochran 175 179 (514), J. Slickman 177, 171 225 (573), B. Shoup 180, 175, B. (513), B. Feasel 178, 187 (514), J. Sittler 174, 213 (528), H. Nash 189, Nussbaum 184, 214, 191 (589), R. Friend 184.

Women — R. Gase 175, R. Mid-dendorff 159, M. Bittner 152, J. Lutes 150, M. Schlickman 151, P. Johnson 196, 171 (500), L. Bowman 171, 152.

High games and series — Men — J. Lengerich 179, B. Mies 170, K. Baumgartner 170, J. Wendell 170, E. Hutker 187, 190 (507), O. Fulton 180, L. Sharpe 172, T. Passwaters 170, R. Wable 173, R. Christen 192, 187 (522), E. McCullough 176, R. Hoffman 171, 188, G. Simons 181, P. Sheets 175, J. Strawn 171, 176, G. Rydell 175, C. Stonestreet 212 (547), D. Lengerich 188 (515), L. Meyer 176, 176 (516), J. Price 198, 173 (540), J. Bayles 182, 173, D. Cochran 175 179 (514), J. Slickman 177, 171 225 (573), B. Shoup 180, 175, B. (513), B. Feasel 178, 187 (514), J. Sittler 174, 213 (528), H. Nash 189, Nussbaum 184, 214, 191 (589), R. Friend 184.

Women — R. Gase 175, R. Mid-dendorff 159, M. Bittner 152, J. Lutes 150, M. Schlickman 151, P. Johnson 196, 171 (500), L. Bowman 171, 152.

High games and series — Men — J. Lengerich 179, B. Mies 170, K. Baumgartner 170, J. Wendell 170, E. Hutker 187, 190 (507), O. Fulton 180, L. Sharpe 172, T. Passwaters 170, R. Wable 173, R. Christen 192, 187 (522), E. McCullough 176, R. Hoffman 171, 188, G. Simons 181, P. Sheets 175, J. Strawn 171, 176, G. Rydell 175, C. Stonestreet 212 (547), D. Lengerich 188 (515), L. Meyer 176, 176 (516), J. Price 198, 173 (540), J. Bayles 182, 173, D. Cochran 175 179 (514), J. Slickman 177, 171 225 (573), B. Shoup 180, 175, B. (513), B. Feasel 178, 187 (514), J. Sittler 174, 213 (528), H. Nash 189, Nussbaum 184, 214, 191 (589), R. Friend 184.

Women — R. Gase 175, R. Mid-dendorff 159, M. Bittner 152, J. Lutes 150, M. Schlickman 151, P. Johnson 196, 171 (500), L. Bowman 171, 152.

High games and series — Men — J. Lengerich 179, B. Mies 170, K. Baumgartner 170, J. Wendell 170, E. Hutker 187, 190 (507), O. Fulton 180, L. Sharpe 172, T. Passwaters 170, R. Wable 173, R. Christen 192, 187 (522), E. McCullough 176, R. Hoffman 171, 188, G. Simons 181, P. Sheets 175, J. Strawn 171, 176, G. Rydell 175, C. Stonestreet 212 (547), D. Lengerich 188 (515), L. Meyer 176, 176 (516), J. Price 198, 173 (540), J. Bayles 182, 173, D. Cochran 175 179 (514), J. Slickman 177, 171 225 (573), B. Shoup 180, 175, B. (513), B. Feasel 178, 187 (514), J. Sittler 174, 213 (528), H. Nash 189, Nussbaum 184, 214, 191 (589), R. Friend 184.

Women — R. Gase 175, R. Mid-dendorff 159, M. Bittner 152, J. Lutes 150, M. Schlickman 151, P. Johnson 196, 171 (500), L. Bowman 171, 152.

High games and series — Men — J. Lengerich 179, B. Mies 170, K. Baumgartner 170, J. Wendell 170, E. Hutker 187, 190 (507), O. Fulton 180, L. Sharpe 172, T. Passwaters 170, R. Wable 173, R. Christen 192, 187 (522), E. McCullough 176, R. Hoffman 171, 188, G. Simons 181, P. Sheets 175, J. Strawn 171, 176, G. Rydell 175, C. Stonestreet 212 (547), D. Lengerich 188 (515), L. Meyer 176, 176 (516), J. Price 198, 173 (540), J. Bayles 182, 173, D. Cochran 175 179 (514), J. Slickman 177, 171 225 (573), B. Shoup 180, 175, B. (513), B. Feasel 178, 187 (514), J. Sittler 174, 213 (528), H. Nash 189, Nussbaum 184, 214, 191 (589), R. Friend 184.

Women — R. Gase 175, R. Mid-dendorff 159, M. Bittner 152, J. Lutes 150, M. Schlickman 151, P. Johnson 196, 171 (500), L. Bowman 171, 152.

High games and series — Men — J. Lengerich 179, B. Mies 170, K. Baumgartner 170, J. Wendell 170, E. Hutker 187, 190 (507), O. Fulton 180, L. Sharpe 172, T. Passwaters 170, R. Wable 173, R. Christen 192, 187 (522), E. McCullough 176, R. Hoffman 171, 188, G. Simons 181, P. Sheets 175, J. Strawn 171, 176, G. Rydell 175, C. Stonestreet 212 (547), D. Lengerich 188 (515), L. Meyer 176, 176 (516), J. Price 198, 173 (540), J. Bayles 182, 173, D. Cochran 175 179 (514), J. Slickman 177, 171 225 (573), B. Shoup 180, 175, B. (513), B. Feasel 178, 187 (514), J. Sittler 174, 213 (528), H. Nash 189, Nussbaum 184, 214, 191 (589), R. Friend 184.

Women — R. Gase 175, R. Mid-dendorff 159, M. Bittner 152, J. Lutes 150, M. Schlickman 151, P. Johnson 196, 171 (500), L. Bowman 171, 152.

High games and series — Men — J. Lengerich 179, B. Mies 170, K. Baumgartner 170, J. Wendell 170, E. Hutker 187, 190 (507), O. Fulton 180, L. Sharpe 172, T. Passwaters 170, R. Wable 173, R. Christen 192, 187 (522), E. McCullough 176, R. Hoffman 171, 188, G. Simons 181, P. Sheets 175, J. Strawn 171, 176, G. Rydell 175, C. Stonestreet 212 (547), D. Lengerich 188 (515), L. Meyer 176, 176 (516), J. Price 198, 173 (540), J. Bayles 182, 173, D. Cochran 175 179 (514), J. Slickman 177, 171 225 (573), B. Shoup 180, 175, B. (513), B. Feasel 178, 187 (514), J. Sittler 174, 213 (528), H. Nash 189, Nussbaum 184, 214, 191 (589), R. Friend 184.

Women — R. Gase 175, R. Mid-dendorff 159, M. Bittner 152, J. Lutes 150, M. Schlickman 151, P. Johnson 196, 171 (500), L. Bowman 171, 152.

High games and series — Men — J. Lengerich 179, B. Mies 170, K. Baumgartner 170, J. Wendell 170, E. Hutker 187, 190 (507), O. Fulton 180, L. Sharpe 172, T. Passwaters 170, R. Wable 173, R. Christen 192, 187 (522), E. McCullough 176, R. Hoffman 171, 188, G. Simons 181, P. Sheets 175, J. Strawn 171, 176, G. Rydell 175, C. Stonestreet 212 (547), D. Lengerich 188 (515), L. Meyer 176, 176 (516), J. Price 198, 173 (540), J. Bayles 182, 173, D. Cochran 175 179 (514), J. Slickman 177, 171 225 (573), B. Shoup 180, 175, B. (513), B. Feasel 178, 187 (514), J. Sittler 174, 213 (528), H. Nash 189, Nussbaum 184, 214, 191 (589), R. Friend 184.

Women — R. Gase 175, R. Mid-dendorff 159, M. Bittner 152, J. Lutes 150, M. Schlickman 151, P. Johnson 196, 171 (500), L. Bowman 171, 152.

# AUCTION

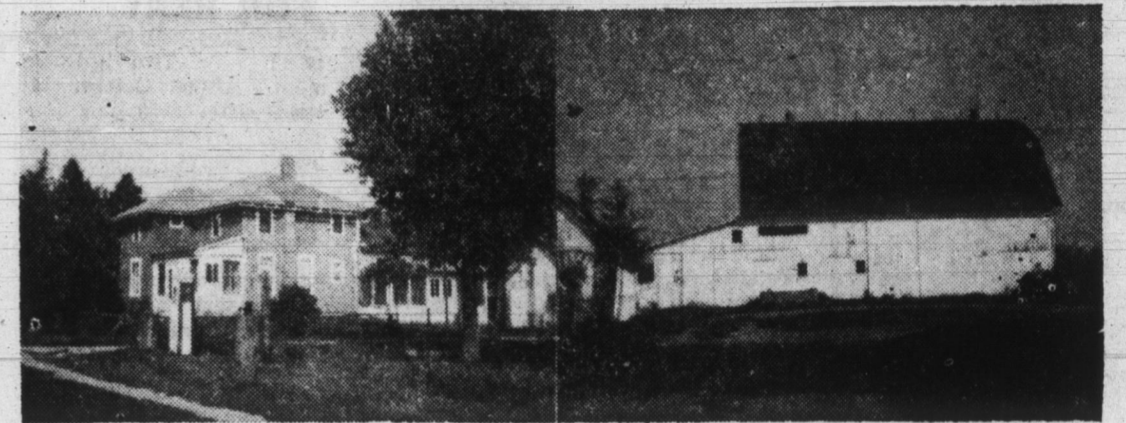
## 2 ROBERT H. DINGER FARMS

JEFFERSON TOWNSHIP ALLEN COUNTY

By order of Allen Superior Court No. 2 we, the co-executors will sell, 2 miles East of New Haven, Indiana on U. S. Hwy. No. 30 to the Franke Road then 2 1/2 miles South, then 1/2 mile East on Tillman Road or 10 miles Southeast of Fort Wayne, Indiana on Tillman Blacktop road, on

**Saturday, October 12th**

**10:00 A.M.**



**TRACT No. 1—44 ACRES on NORTH SIDE OF TILLMAN ROAD — Sells at 1 P. M.**

**Drive By and Watch For Signs.**

**IMPROVEMENTS**—8 room 2 story frame house; 5 rooms & full bath down; 3 bedrooms and full bath up; asbestos roof; full basement; new forced air furnace; electric hot water heater; motor plumbing on 115 foot 4 inch well and large cistern. Good 36x56 barn with 16x36 shed attached (built in 1942); good 20x32 double corn crib and granary with center drive; 2 - 1 car garages; other outbuildings. 6 Ton John Deere platform scales; electric gas pump with underground tank; underground tank with hand fuel oil pump goes with farm.

**LAND**—44 acres of well improved level dark mixed fertile clay loam under cultivation except 6 acres of wooded and building area. Very well tiled. Good line fences.



**TRACT No. 2—40 ACRES—ACROSS FROM TRACT No. 1 ON SOUTH SIDE OF TILLMAN ROAD.**

**Sells at 1:45 P. M.**

**IMPROVEMENTS**—5 room frame house, remodeled in 1953, 3 rooms and bath down and 2 bedrooms up; asbestos siding; new full basement; International forced air oil furnace; electric hot water heater; motor plumbing on 115 foot 4 inch well and cistern. 36x76 foot barn.

**LAND**—40 acres of level dark mixed fertile clay loam under cultivation except 2 1/2 acres of grove and building area. Well tiled. Terms See Below.

## Household Goods Antiques

**Guns Miscellaneous**

**Sells at 10 A. M.**

Good Kelvinator 12 ft. chest type deep freeze; Kelvinator electric refrigerator; good white porcelain Maytag square tub electric washer; 7 ft. Servel gas refrigerator; Estate electric stove; Zenith 17 in. TV; white porcelain laundry stove; Hot Blast heating stove; 27x19x18 house safe; oak roll top office desk; 2 pc. green mohair freize living room suite; 8 pc. walnut dining room suite; Hoover electric sweeper & attachments; 2 walnut metal beds with box springs & mattresses; 11.3x 12 ft. rose floral design Axminster rug; 12x12 brown & floral Axminster rug; 2 - 9x12 ft. Axminster rugs; throw rugs; wicker rocker; 3 rockers; maple chair; 3 dressers; plastic chair; overstuffed chair; buffet; 10 straight chairs; 3 wall mirrors; chest of drawers; davenport; card table; GE table model radio; aluminum folding chair; step stool hassock; 54 pc. American Flyer by Gilbert train set with new transformer; GE electric clock; library table; large roll of freezer paper; TV trays; hand sweeper; Dormeyer mixer & attachments; wine set; table lamp; planters; smoking stand; wash stand; wash tubs; 40 glass jugs; Singer drophead sewing machine; metal utility cabinet; lots of fruit jars; crocks; jars; pressure cooker; toaster; cooking utensils; 2 wine barrels; 2 house plants; lots of linens and many miscellaneous articles.

**ANTIQUES**—Sells at 12 noon—Dinner bell; mantle clock; eagle claw stand; old violin; 2 oil lamps; trunk; 30 old Brown glass bottles; ash drop leaf extension table; picture frames.

**GUNS**—2 - 12 gauge hammer double barrel shotguns; 22 caliber Winchester repeating rifle.

## Automobile Tools Chain Saw Miscellaneous

1955 2-DOOR PLYMOUTH SAVOY 6 cylinder automobile, automatic transmission, heater; good WSW tires; 20 inch David Bradley chain saw; extra good fanning mill with 1/3 h.p. motor and screens; 2 wheel Federspiel stock & grain trailer; 1000 pound platform scales; 2 - 12x18 tin roof range shelters for turkeys or chickens; 2 - 10 hole galvanized hen nests; 9 - 4 ft. feeders; 5 egg crates; rubber tire wheelbarrow; 7 ft. all steel double blade road drag; 35 steel fence posts; 3 rolls of 4 foot used fence; 8 native oak 4"x4"x16 foot; 2x4's; 2x8x12's; 75 ft. Kitson Automatic Poultry Feeder; 30 gal. chick feeders; 1x6's; 1x8's; 25 4x6x5's; other lumber & wood; roll of picket fence; 3 steel farm gates; 14 grain unloading chutes; small gates; 3 ft. x 5 ft. metal storage building; 28 foot extension ladder; 20 grain sacks; 30 burlap sacks; 30 bushel baskets; 65-4" tile; 10 feed barrels; 75 bales of straw; motor sheller with 1/4 h.p. motor; large galvanized feed tank; 5 and 8 foot step ladders; 2 wheel cart; 3 oil lanterns; 50 foot of garden hose & reel; rubber tire lawn mower; hand seeder; screens; door & window sash; 4" Craftsman bench vise; complete saw filing set; 2 log chairs; steel post driver; hand saws; sledge; wedges; 2 cross cut saws; hand bench grinder; block & tackle; post hole digger; 3 spades; shovels; forks; hoes; axes; steel traps; ditch scoop; regulation horse shoes; metal cabinet; lots of other miscellaneous articles.

**TERMS & CONDITIONS**—Personal Property—Cash. Real Estate to be sold for not less than full appraised value subject to the approval of Allen Superior Court No. 2, \$2500.00 cash or check down payment sale day on each tract—balance due upon final settlement. The seller shall pay the 1962 taxes due in 1963. Not responsible for accidents. Possession of all farm land after 1963 crops are harvested which are reserved by the sellers. Tract No. 1 possession of buildings upon final settlement; Tract No. 2 subject to tenant's rights. Houses to be shown by appointment only by auctioneers or executors.

**AUCTIONEER'S NOTE**—These farms are in a wonderful location in one of the better farming communities close to New Haven and Fort Wayne. Farms like these are for sale only by death in the family. This township has one of the lowest tax rates in Allen County. Please contact auctioneers for further information and farm loans. Any statement made day of sale shall take precedence over any contained in the advertising.

## ROBERT H. DINGER, ESTATE

Noble R. and Dallas L. Dinger, Co-executors  
Orville Sturm, 749-1491, New Haven, Ind., Miller & Miller, Attorneys, 749-1144  
Walter Wiegman, Preble 56, Decatur, Ind. — Auctioneers  
— Clip this ad as it appears only once! —

## Record Hot, Dry Weather Continues

By United Press International  
Record-breaking heat and record-setting dry weather jolted Indiana with a one-two punch during the weekend.

Temperatures in the 90s brought summer heat to Hoosierland at its northern extremes Sunday although autumn is officially in its third week and readings that high are unheard of in October.

The string of rainless days stretched past seven, and the period of drought except for a very few minor showers moved into its eighth week, as drying vegetation and falling leaves created fire hazards described as the worst since 1952.

South Bend's 92-degree high Sunday broke all records there for Oct. 6. Chicago registered 90. Readings in the 80s were common elsewhere, including 89 at Fort Wayne and Lafayette, 86 at Indianapolis and Cincinnati, 85 at Evansville, and 83 at Louisville.

Overnight laws this morning were cold downstate and warm upstate. Evansville had a cool 44 and South Bend a warm 63.

The Indianapolis low Sunday was only one degree below the record high for the date set in 1916.

Highs today will range from 85 to 92 upstate, in the upper 80s central, and 85 to 92 south. Then there will be a cooloff with lows tonight ranging from the 50s to 60, and highs Tuesday from the low to upper 70s.

## Jailed On Charge Of Disorderly Conduct

Harve Brown, route 2, Geneva, is lodged in the Adams county jail under \$50 bond.