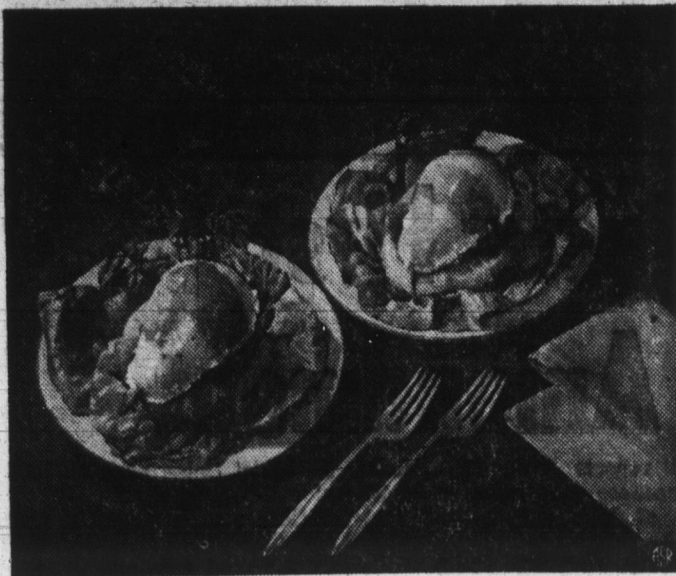


Give Sparkle to Autumn Salads



These glistening individual Party Pear Salads with their colorful pink dressing are sure to make your Autumn meals more festive and flavorful.

Fresh Bartlett pears used here are now in season. Mountain grown and harvested at the peak of their maturity, Pacific Bartletts are individually wrapped and carefully packed to reach your local market in superior condition. Their beautiful size and luscious juiciness make them a delicacy for out-of-hand eating and lunchboxes.

For a change of pace at the end of a busy summer, feature fresh Bartlett pears frequently, as in this recipe for Party Pear Salads.

Party Pear Salads

- 4 fresh Bartlett Pears
- 4 pineapple rings
- 3 ounces cream cheese
- 2 tablespoons chopped maraschino cherries
- 2 tablespoons chopped nuts
- Pineapple juice
- Crisp greens
- Party Pink Dressing

Peel, halve and core fresh pears leaving stems on. Drain pineapple. Cream softened cream cheese with cherries and nuts, adding just enough pineapple juice to make good spreading consistency. Fill center and spread out side of pear half to edges with cream cheese filling. Top with second pear half and arrange over pineapple ring on crisp greens on individual salad plate. Top with Party Pink Dressing. Makes 4 servings.

Party Pink Dressing

- 3 eggs
- 1/2 cup pineapple juice
- 1/4 cup sugar
- 1/4 teaspoon salt
- 2 tablespoons melted butter
- 1/4 cup lemon juice
- Maraschino cherry juice

Combine eggs, pineapple juice, sugar, salt and melted butter in top of double boiler, beat until blended. Slowly beat in lemon juice. Stir and cook over boiling water until thick. Chill. Thin and tint with maraschino cherry juice before serving.

Flow Improved in New Well Pumps

Flow has been improved and maintenance lessened in new submersible pumps, developed for deep and shallow water wells in home and farm service, through utilization of a foundry process for casting the pump bowls.

The new process uses a thin shell of fine sand bonded with a new plastic to shape the interior of the pump.

Gray Iron Founders' Society engineers point out that producing high-grade cast iron pump bowls by shell core method provides ultra-smooth finishes in the interior sections or waterways. Self-priming pumps for a variety of home, farm, and industrial uses also utilize cast iron for their body, volute, and impeller and for the casting of the gas engine or electric motor powering the pump.

IT'S SO... EASY

To Build The Ready-Mix Way. We deliver the exact amount you need right to the place to be used.

YOU SAVE...

MONEY

Because it's fast and there is no waste.

BE SURE TO USE DECATUR READY-MIX CONCRETE

PHONE 3-2561

DECATUR READY-MIX CORP.

E. OAK & FORNAX STS.

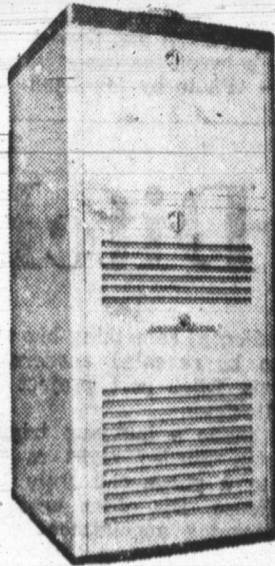
DECATUR, IND.

LET US INSTALL AN AMERICAN FURNACE

buy from us with CONFIDENCE Look for this emblem



I&M RECOMMENDED ELECTRIC HEATING-COOLING DEALER

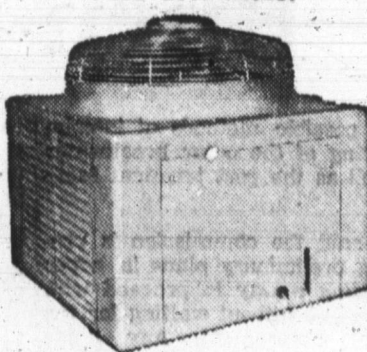


HAUGK

209 N. 13th Street

... and for Summer Comfort combine it with an AIR CONDITIONER

FREE ESTIMATES!



PLUMBING AIR CONDITIONING HEATING

Phone 3-3316

Divider Wall Will Provide Privacy in Children's Room

When two children occupy one room, each is entitled to privacy for work, study and play.

This situation can be created in a sizable bedroom by installing a functional divider wall large enough to provide each child a separate study-hobby space.

Inexpensive and quite easy to install, the divider's structural members are 2x4-inch lumber spaced 16 inches apart and nailed to floor and ceiling runners of the same dimension material.

To each side, the craftsman then can nail some attractive, factory-finished panels of Masonite Pres-to-Peg-Board. Their all-over pattern and tie-tac-toe design of perforations make a good looking backdrop and suitable place for hanging shelves, clock and hobby items.

On each side can be hung a working surface made by covering a rectangular framework of 1x2-inch lumber with Masonite Tempered Preswood. Cross members should be 16" apart. With the wood parts primed and painted and the surface shelledacked or varnished, the deck provides an excellent surface for study or hobby.

It must, of course, be anchored to the studs forming the back-

bone of the divider and fitted with wood supports angling into the divider at the floor.

Drawers made of lumber and hardboard can be mounted underneath. Fluorescent lighting above will illuminate the area adequately.

For a free plan detailing a more elaborate two-in-a-room plan, including closets, send a postal card to the Home Service Bureau, 29 North Wacker Drive, Chicago 6, Ill., requesting No. AE-265.

Five-Sided Playhouse Easily Built

The kiddies will love their own pentagon.

Pentagon for them means a five-sided playhouse that Dad can string together with plastic cord in an evening.

From the lumber yard, he can get five pieces of Masonite Tempered Preswood. Depending on the number of youngsters who'll be using this pentagon, the panels can be 4x4s or 4x6s.

For easy lacing, good ventilation and many peekholes, Dad may want to buy Peg-Board. He'll use a strong plastic cord to lace the ends of the panels, being sure the joints will be like piano hinges—allowing folding of the panels against each other in either direction.

Between panel 1 and panel 5 there will be no lacing, as this is the door to the kiddies' pentagon. Due to its flexibility, this summer playhouse may take various shapes. It may zig-zag to become a barricade, fortress, or fence.

If it's Peg-Board and Dad can keep the kiddies away, he can use it as a shaded siesta spot, with magazines and refreshments hung from brackets in the perforations. The panels should be primed and painted in bright colors. They'll be an attractive, useful addition to any backyard. If the youngsters are tiny, the pentagon can be anchored into a fixed position by means of wooden stakes to avoid its being knocked over.

Make The Most of a Patio To Gain an Outdoor Room

Dollar for dollar, a patio is a sound investment in summer-time living enjoyment for the whole family. It costs little to build and pays dividends in the form of an added "outdoor" room.

To begin with, consider the patio as part of the over-all layout of the house and afford it the same attention as you would a room, say designers of Libbey-Owens-Ford Glass Company. It should appear as a planned part of the home and not as a thoughtless extra.

When possible, build the patio on the south or southeast part of the house to get the most breeze in summer. Shield it from neighboring property with trees, shrubs, privacy fence or wings of the house itself and take advantage of the colorful plantings from both indoors and out by joining the house to the patio with floor-to-ceiling Thermopane insulating glass.

Since a patio is primarily intended to increase living enjoyment, keep its "efficiency rating" high to avoid making it an area which requires constant maintenance. For example, flagstone paving will reduce the need for extensive grass clipping; raised plant beds make flower gardens easy to reach; evergreens will look well all year with little attention, and potted plants in color containers can be rearranged at will to provide custom-made patio landscaping.

Hardboard Helps Ease Home Work In Many Ways

Outdoor work can be made easier through the use of quarter-inch tempered hardboard. The Masonite Home Service Bureau offers these suggestions:

To keep down weeds in a garden, cover the space between rows of plants.

Mark rows of flowers or vegetables with paddle-shaped stakes, gluing on the seed package or painting on the name of the variety.

A square of the smooth-surfaced hardboard is ideal for mixing concrete used for patching a walk or driveway. The residue can be washed off clean and the board reused for this purpose or others.

For installing concrete walks or stepping stones, this versatile material can be nailed to wooden stakes to create forms.

GETTING THE MOST... FROM YOUR GARDEN

by Dr. W. A. Liddell

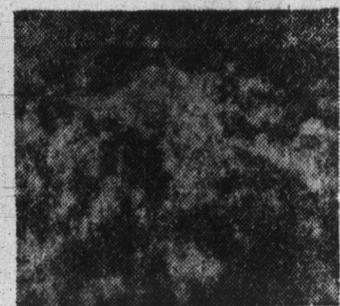
Director of Information, Agrisec Seed Company

FOR AILING LAWNS

Plants and animals have miseries in common. Both suffer from diseases caused by viruses, bacteria, fungi, and roundworms. Grass, being a plant, is no exception, and even in the best kept lawns, various of these diseases can cause serious damage, making it necessary to replant large areas.



Snow mold



Melting out (leaf spot)

Among the most common lawn diseases are snow mold, melting out, dollar spot, and brown patch. The first two occur in the winter and early spring; dollar spot and brown patch come during the late spring and summer. They are caused by fungus organisms which attack the plants, causing gradual defoliation until large areas of turf are affected.

Snow mold shows its symptoms with the first spring thaws, appearing as sharply outlined straw-colored areas. These may range from 2 inches to 20 feet in diameter, turning either dull gray or pinkish in wet weather, depending on the particular fungus causing the condition. Snow molds attack all the cultivated lawn grasses and are favored by warm conditions under a layer of snow and by mild winter weather combined with high rainfall or heavy fogs.

Melting-out, which is also known as leaf spot, begins in the cool wet weather of spring, appearing first as water-soaked areas on the leaf-sheath parts of grass plants. These areas become purplish red and then turn brown in the summer.

When the leaves become completely girdled, they drop from the plant, and in heavy infestations, entire areas of the lawn appear to "melt" away.

The common strain of Kentucky bluegrass is susceptible, though the Merion strain is quite resistant. Dr. Houston B. Couch, turf specialist at Penn State, estimates that almost every established strand of Common Kentucky bluegrass in the Northeast and Midwest is to some degree infected with leaf spot, or melting out.

Dollar Spot occurs usually from mid-July to late August and affects all the popular turf grasses, though bentgrass and bluegrass are the most prone to injury. Infected leaves show small green blotches, which fade to straw-colored tan as they enlarge. The margins of

For a free booklet to help you have a rich green turf, print your name on a postcard and send to Living Lawns, Agrisec, PO Box 406, New Haven 2, Conn.

Fences Add To Effective Landscaping

Fences are meant to beautify as well as protect, to add to landscaping's effectiveness as well as define boundaries. They can be located anywhere to provide privacy and contribute to appearance. Properly planned and constructed, they can achieve these goals economically and with a minimum of maintenance.

Fence styles are almost as numerous as the reasons for erecting them. For instance, there's the woven horizontal pattern, made by weaving long strips of Masonite hardboard from three to 12 inches wide between posts spaced three to four feet apart. Or, a vertical weave can be achieved by nailing hardboard strips alternately to each side of 2-by-4 rails and around a one-inch center dowel.

Use of Peg-Board panels fastened alternately to either side of rails gives a hanging garden effect when potted plants are hung in fixtures inserted into the perforations of the hard board. Such a fence also is ideal for supporting a grape arbor.

A score of ideas on fences are shown in a booklet which can be obtained free by writing to the Home Service Bureau, 29 North Wacker Drive, Chicago 6, Ill.

When modernizing a room, finish the job with matching moldings.

Both metal and wood moldings are available for these projects according to the Masonite Home Service Bureau.

Six Woodgrains In Marlite Line

Handsome woodgrain walls can be installed quickly and without muss in a basement recreation room with high-fidelity Marlite planks. The plastic-finished hardboard planks do not require any finishing, and their backed plastic finish is washable to reduce maintenance to the minimum.

The 16" x 8" planks are tongue and grooved to simplify installation. Detailed installation instructions are included in each package. Plastic-finished hardboard planks are available in Swedish and Italian Cherry, Swiss and American Walnut, English Oak and Norwegian Maple.

Fireplace Adds to Livability Of Modern Glass-Walled Homes

If you want to recapture some of the nostalgia of "the good days," try reviving the traditional family pastime of gathering around a roaring fireplace. It's an idea that homemakers are finding both practical and enjoyable.

Although fireplaces have yielded much of their former prominence to modern appliances, they are still unique in the touch of comfort and mellow livability they add to a room, comments Otto F. Wenzler, architectural consultant of Libbey-Owens-Ford Glass Company.

STYLEWISE, the simple, clean lines of modern fireplaces add appeal to any room, the architect commented. The materials from which they are now commonly made include varieties of brick as well as natural and pre-cast stone, offering homeowners a choice of design and color to blend or contrast with the over-all decor of the room. Many prefabricated models, which are perfect for remodeling on a limited budget, are also available. Some are complete units which need only to be connected to a chimney.

Commenting on the growing popularity of fireplaces, Mrs. Wenzler pointed out that families today are generally inclined to informality in everyday life and entertaining, and it follows that more-and-more time is being spent relaxing outdoors and preparing meals regularly on the grill. It is natural, he said, that everyone is reluctant to sacrifice this freedom when the weather compels to move indoors.

"IN MODERN HOMES where Thermopane insulating glass walls have practically made rooms part of their surroundings, however, the feeling of patio living has moved indoors with the season. A fireplace in the living or family room enables homemakers to maintain much of the summertime atmosphere all year, even to the point of barbecue cooking," Mr. Wenzler added.

With the fireplace often forming a dividing wall between the family room and kitchen, the trend is to designing them with the hearth opening on both sides. This way, the pleasing effects can be enjoyed from two rooms at the same time with a cost saving brought about by using one common chimney.

HOMEOWNERS can also capi-

talize on the tendency to place the hearth above the floor so everyone has a good view of the blazing logs. Mr. Wenzler suggests that a raised hearth be expanded into a built-in bench that extends the full width of the fireplace wall. This serves as a perfect place to set fireplace accessories and can double as extra seating space when needed.

BUILD THE MODERN WAY WITH

YOST

READYMIX CONCRETE

- Fast Delivery
- Scientifically Mixed
- Long Lasting

10% Discount ON ALL READYMIX CONCRETE

PHONE 3-3114

YOST

GRAVEL READYMIX INC.

R. R. 1, DECATUR

Gardeners: Make Hinged Bench

Since the garage often is a gardening center, a swing-door work bench is a boon. A discarded door will serve, providing you cover it with durable Masonite 1/4" Tempered Preswood. Bevel the edges with a file. Fasten the workbench to studs with hinges and add lumber braces. For additional ideas on garage improvement, send a postal card to the Home Service Bureau, 29 North Wacker Drive, Chicago 6, Ill., for free plan AE-312.



LESS HOUSEWORK BETTER APPETITES

Since we installed GENERAL ELECTRIC CENTRAL HEATING & COOLING

ASHBAUCHERS' TIN SHOP

Established 1915 116 N. 1st St. Decatur, Ind. Phone 3-2615