

Household Scrapbook  
By Roberta Lee

**Clean Those Brushes!**  
When finished painting, clean the brushes in turpentine (or mineral spirits), followed by hot soapsuds. Don't delay this process, if you want the brushes in good condition for the next job! Don't use strong alkaline or acid solutions. And don't dry the brushes fast—nor should they remain wet longer than necessary. Hang up to dry.

**Chipped Porcelain**  
At one time an almost impossible job for the amateur, chipped porcelain can now be repaired nicely with the new porcelain glazes on the market. The area must be free of grease and dirt, and should be completely dry. Apply a thin coat of the glaze, wait 30 minutes, and apply another thin coat. Keep applying until the damaged spot is built up so that it is level with the surrounding surface. The trick is not to try to fill the chipped area with one single thick coat. Have denatured alcohol on hand to be used for wiping off any surplus glaze.

**Suede Shoes**  
Keep your suede shoes new-looking by rubbing them with a piece of stale rye bread or a rubber sponge after each wearing.

## IF THERE IS A NEW BUILDING IN YOUR FUTURE PLANS...

CALL 3-3114

FOR

YOST

READYMIXED CONCRETE

10% Discount ON ALL READYMIX CONCRETE

YOST

GRAVEL READYMIX INC.

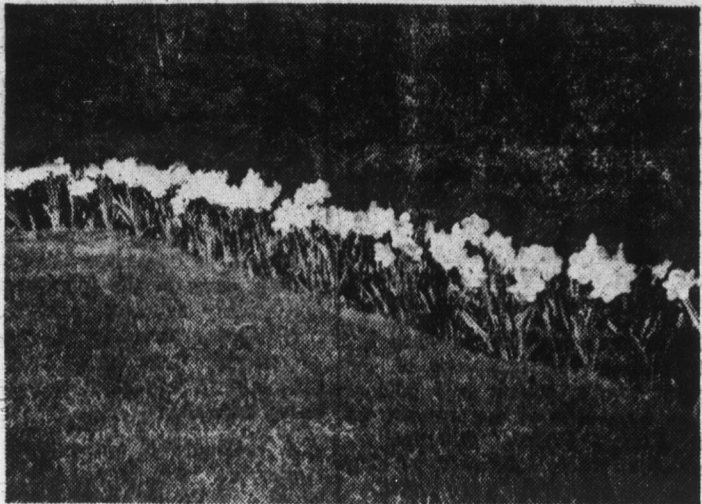
R. R. 1, DECATUR

## GETTING THE MOST... FROM YOUR GARDEN

by Dr. W. A. Liddell  
Director of Information, Asgrow Seed Company

## PLAN AND PLANT NOW FOR COLOR IN SPRING

The sunny weeks of summer may be with us still, but the steadily shortening hours of daylight warn that the season is drawing to an end. The prudent gardener remembers that now is the time to be getting his bulbs into the ground if there is to be a good display of color in the coming spring.



First to appear, and for that reason well loved, are the snowdrops. They will grow almost anywhere, but are often planted among tulips, which they precede. There are large-flowered and double-flowered varieties, but these have not displaced the old single in popularity. Set the bulbs 3" deep, individually or massed.

Spring crocuses, the next arrival, are often planted in lawns as they generally flower before the first mowing, but it is also effective in the front of a perennial border or among ground covers, where it will produce progeny if the tops are left until they dry out. Several colors are available, from the favorite yellow to white and blue. Set the bulb-like corms 3" deep. The lilac colored fall species is planted in July.

Tulips, as indispensable as they are lovely, provide decorative groupings for the border in almost any arrangement of colors that may be desired, since their many varieties and types range from white to near black, and some with variegated colors or odd shapes. It will be helpful if an area plan of the border is sketched and the colors and types chosen to form a harmonious and pleasing picture, usually with the different varieties in groups rather than a mixture of individuals. The bulbs should be planted 6" to 8" deep, down where the soil is cool and not too rich, the short single or double early types for first bloom, the taller and later-flowering sorts to follow. If the tulips are to be succeeded by summer annuals, these should be marked on your plan and the seeds sown when finishing the bulb planting. This method gives happy results and the growing annuals will screen the foliage of the tulips, left after the flowers have gone, to help in making food for the bulb below so that it will bloom again next spring. A light mulch will

protect the bed and prevent seeds from being washed away.

Next to tulips, daffodils are prime favorites though they are very different in many ways, notably that tulips are sedate and planted formally in the border, but daffodils nod in the breeze and are seen to better effect in small groups below trees or beside shrubs as if they had just chanced to grow there. Colors range from white to orange and there are many types, from large trumpets to the sweet-scented poet's narcissus with hardly any trumpet, and the jonquil with smaller blooms in clusters, also scented. There is a corresponding variation in the size of the bulbs, which should be set at three times their own depth. There would almost seem to be an antipathy between these two leaders of the spring bulbs, as it has been found that when both are cut and placed together in a vase, the daffodils diffuse in the water something that is toxic to tulips.

Hyacinths not only look well in the forefront of a perennial border but also add the charm of their very sweet fragrance. The flowers are in trusses which may be white or purple or an intermediate pastel tone, and stand rather formally. Bulbs should be set about 5" apart and 4" deep.

Their minor cousins, the charming little grape hyacinths or muscari, stand about 6" high with tight spikes of small flowers, white or blue, growing best where they get shade. Another low-growing and pretty little plant is the blue squill, which is a scilla, as is the English bluebell, better known to us in song or story than in our gardens.

If you would like free information about how to grow vegetables in your back yard, send your name, on a postcard, to Asgrow Garden Guide, PO Box 406, New Haven 2, Conn.

## Rugged, Rustic Walls Required In Sports Nook

For a sportsman's corner in the recreation room—a rustic-appearing wall surface is a "must." Many lumber dealers are suggesting the use of Masonite Seadrift, an embossed board.

Besides giving the atmosphere which the outdoor sportsman appreciates in his "corner," the panels are rugged and will stand knocks and bumps. They may be painted attractively to help make the area a pleasant place for the man of the house to plan his forays during the fishing and hunting seasons.

If the sportsman is a do-it-yourselfer, as many are, he may want to build a built-in closet with storage facilities for guns, other sports gear and hunting or fishing clothes and paraphernalia.

This cabinet, based on an easily-built lumber framework and covered with Masonite Leatherwood a hardboard with the appearance of Spanish grain leather, has an inside panel of Peg-Board for hanging equipment and a drawer for storage. For a copy of free plan AE-280 which tells how to build the "sportsrobe" send a postcard to the Home Service Bureau, Suite 2037, 111 W. Washington St., Chicago 2, Ill.

## All-Electric Freedom

Builder James Rosati of St. Petersburg, Fla., has built 300 Gold Medallion Homes in Freedom Village, a retirement community. He believes well designs, all electric homes are ideally suited for the convenient style of living he wants to offer. Rosati's kitchens include five major built-in electric appliances—counter-top range and wall oven, dishwasher, refrigerator-freezer, combination washer-dryer, and water heater.

## Modern Hide-Away in Ohio Hills Offers Year-Round Resort Living

A growing sign of prosperity and modern living is the second home at the shore or in the country.

An outstanding example of a planned year-round leisure community is Hide-A-Way Hills in Bremen, Ohio, about 50 miles from Columbus. This development covers nearly 1200 wooded acres in the Hocking Hills, and is favored with four lakes for fishing, swimming and boating in the summer, and ice skating and ice boating in the winter.

Among the many other recreational facilities are tennis courts, a nine-hole golf course, bridge paths and stables, archery and rifle ranges, toboggan slides, a ski tow and runs, and a central lodge for dining, dancing and other social activities.

Houses at Hide-A-Way Hills are designed to serve as retirement homes as well as vacation lodges. Because of this and the extremes in the weather—temperatures often top 100 degrees in summer, drop to 30 degrees below zero in winter—emphasis is placed on quality building materials.

F. M. Donelson, president of Hide-A-Way Hills, says that his homes are equipped with electric heat and that thorough insulation is used to help provide year-round comfort and to keep heating costs low. Mineral wool insulation is used in walls, floors and ceilings in many of his homes.



This modern second home features durable construction and quality materials, like asphalt shingles and wood windows.

Another aid to comfort and heating economy is the use of ponderosa pine windows. They help keep heat in and drafts out because of the natural insulating quality wood and because of their snug fit and built-in weatherstripping. Wood windows are also preferred, Donelson says, because they are compatible with the rustic setting.

Also widely used at Hide-A-Way Hills are asphalt shingles that have been tested and approved by Underwriters' Laboratories for their fire- and wind-resistant qualities. We adds that asphalt shingles are "easy to apply, have long-lasting good looks, are low in maintenance and blend well with the wooded, hilly area."

Donelson's homes also include full plumbing, an electric range, refrigerator-freezer and waste disposer. Lots cost from \$2,000 to \$3,600, and houses sell from \$5,000 to \$13,000. Nearly 200 homes are expected to be completed by the end of 1963.

A shopping center, two chapels and a marina are planned for the near future.

Herbert C. Heath, chief architect in the Houston FHA office said, "We learned a great deal from the hurricane. It was a major test of how shingles react during high winds. I am convinced that asphalt shingles properly nailed and sealed down will withstand the winds we get in Houston."

## Cost-Cutting Building Methods Give Buyer More for His Money

Big-scale building has meant above-average living on a budget for thousands of families. Many of these are people who once blanch at the thought of living in a housing development—a sea of look-alike cubicles.

But Levitt & Sons, Inc., does not build that way. Levitt communities are seas of variety. Several different house styles are built, each with a number of exterior variations.

Strathmore at Matawan, N. J., is a good example of what makes Levitt's communities click. It is a carefully planned community of 1,900 homes, the first occupied late in 1962.

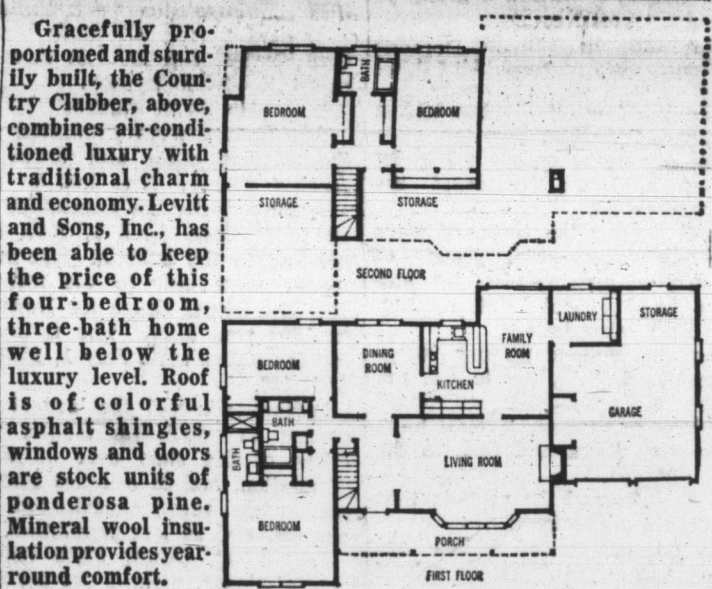
Included are a Bath and Tennis Club, shopping center, church sites, and municipally operated sewer and water systems. Streets, street lights and sidewalks were installed and paid for by the Levitt firm.

Equaling the communal facilities are the homes themselves. Five dissimilar models, one a ranch and the others two-story traditional homes, are intermingled in the community.

Each home is centrally air-conditioned and designed and constructed to make both heating and cooling economical. Each home in Strathmore is insulated thoroughly with mineral wool. This has helped keep both the initial and maintenance costs down without reducing efficiency, by permitting the use of smaller, less expensive cooling systems. The smaller the cooling unit, the lower its operating cost.

Wood doors and windows, which contribute to the attractive traditional look of Strathmore homes, also add to their year-round comfort, since wood is an excellent insulating material. Exterior doors and windows are stock units of ponderosa pine, which come from the factory ready to install. This is a cost-cutting factor Levitt uses in all homes, and one that helps keep maintenance low.

Roofing of UL-labeled asphalt shingles is another quality building material Levitt uses to hold down original cost without sacrific-



ing appearance or performance. Low in applied cost but durable and attractive, the asphalt shingle roofs on Strathmore homes are of various pastel colors, or white. By reflecting the summer sun, the light-colored shingles help keep cooling costs low.

Strathmore residents also find two other Levitt principles particularly appealing—facile household traffic circulation and well-planned, all-electric kitchens.

Kitchens, designed for working, step-saving efficiency, are equipped with automatic electric

## Right Roofing Snubs Storms, Repels Rain

Once a vicious windstorm has blown itself out and the skies have emptied their last bucketful of rain, some homes stand unscathed, while others are seriously damaged. Why?

It may be a miracle, but more likely it was foresight on the part of the home owners.

The houses that suffer the least damage from wind and rain usually are those with wind-resistant roofing. If the roof holds, the interior of a house is protected from the torrential rains that generally follow hurricanes and other windstorms, causing a major part of the costly damage.

Wind-resistant asphalt shingles are either self-sealing or interlocking. The former have a factory-applied adhesive that bonds them firmly to shingles below; the latter have slits or tabs to provide a tight joint with adjoining shingles.

Those that carry the UL "wind resistant" label have met the Underwriters' Laboratories specifications for weight, fire resistance and durability, as well as for wind resistance.

After touring Texas coastal cities struck by Hurricane Carla in 1960, Norvel F. Favela, president of the Houston chapter of the Society of Residential Appraisers, commented, "One valuable lesson was learned—that self-sealing asphalt shingling can withstand the action of high winds. A check of roofs after the storm proved that these shingles came through with little or no damage."

Before applying these aluminum coatings, be sure that the roof is clean and that any loose material, including blistered paint, is removed. Loose or blistered areas of roofing should be nailed down. Seal small breaks with roofing cement. Badly damaged areas and large cracks should be patched with roofing felt, securely attached with roof cement. Check all flashing and caulk it.

## 'No Man's Land' Cries For Fix-Up

The common "no man's land" of the home owner is his garage. Too often it's the catchall for garden equipment, bicycles, tricycles and camping equipment—most of them standing or stacked on the floor.

"No man's land" can be changed from an unsafe jungle into a civilized place, at little cost and a great gain in convenience for all concerned. The cure lies along two lines: Storage in cabinets and on walls.

Since most garages aren't intended for storing anything but an automobile, there may not be room for even a corner cabinet but there is room for floor-to-ceiling installations of Masonite 1/4" Peg-Board, the strong hardboard with the thousands of holes which can hold things off the floor but within ready reach.

And there often is room above

## Save The Cost Of A New Roof With Paint

The aluminum roof paints and coatings introduced by the paint industry in the past few years make it possible to postpone costly reroofing jobs for five to eight years or more. They may be applied to any roofing material except wood.

These paints are available in a choice of pastels and are of three general types: asphalt combined with aluminum; alkyl-based aluminum paints and synthetic-based aluminum paints, according to the National Paint, Varnish and Lacquer Association. The alkyls almost always also contain asbestos fibers for greater strength, while the asphalt coatings are made with an without these fibers.

Ask your reputable paint dealer which type is best suited for your particular roof and area of the country. With roof coatings as with all paints, it is important that you buy only quality products made by a reputable manufacturer and sold or recommended by reputable dealers and contractors.

In addition to waterproofing and sealing the roof, these paints can also reduce under-roof temperatures by as much as ten to fifteen degrees in the summer because they reflect a large portion of the sun heat. During the winter, this same reflective aluminum shield will also prevent heat from escaping from the house. This can mean lower fuel and air conditioning bills.

Some of these coatings can be applied with long handled rollers and some can be sprayed. Check the label instructions for the best method of application.

Some of these coatings can be applied with long handled rollers and some can be sprayed. Check the label instructions for the best method of application.

Some of these coatings can be applied with long handled rollers and some can be sprayed. Check the label instructions for the best method of application.

Some of these coatings can be applied with long handled rollers and some can be sprayed. Check the label instructions for the best method of application.

Some of these coatings can be applied with long handled rollers and some can be sprayed. Check the label instructions for the best method of application.

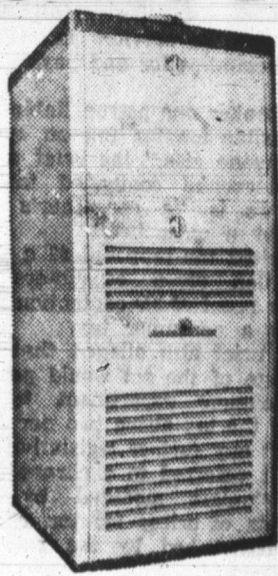
Some of these coatings can be applied with long handled rollers and some can be sprayed. Check the label instructions for the best method of application.

## LET US INSTALL AN AMERICAN FURNACE

buy from us with CONFIDENCE  
Look for this emblem



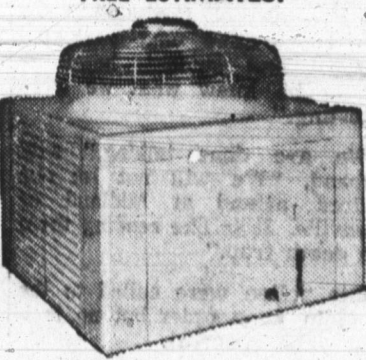
I&M RECOMMENDED  
ELECTRIC HEATING-COOLING DEALER



HAUGK

209 N. 13th Street

... and for Summer Comfort combine it with an AIR CONDITIONER  
FREE ESTIMATES!



PLUMBING AIR CONDITIONING HEATING

Phone 3-3316

## Hidden Values

Most of the structural part of a home is hidden, but, when inspecting a home before buying, go to the basement and see what the joists look like as they inspect the exposed rafters. If these are of good Douglas fir lumber you know the best has been used.

## Deck Spacing

Many women complain that deck boards are spaced too far apart allowing their heels to catch in the cracks. Ideal spacing is to place an ordinary metal washer between the boards. This gives about an eighth inch spacing, which is adequate for water drainage.

## No Nicks

Saw textured of rough-sawn siding is tough and will not show nicks and bumps. Popular rough-sawn sidings available in most cities are western red cedar, west coast hemlock and Douglas fir.

## Average Home

An average home contains 10,000 board feet of lumber and some 2,000 separate pieces ranging from sturdy Douglas fir floor joists to the finest western red cedar siding and finish lumber.

## Mr. Farmer...

COME SEE AND

GET OUR DISCOUNT PRICES

ON

4" 5" 6" 8"

CONCRETE DRAIN TILE

"GOVERNMENT APPROVED"

PHONE 3-2561

DECATUR

READY-MIX CORP.

E. OAK &amp; FORNAX STS.

DECATUR, IND.



- LESS WASHING
- LESS HOUSE CLEANING
- LESS DRY CLEANING
- LESS RE-DECORATING

WITH CLEAN Filter Fresh, GENERAL ELECTRIC HEATING

Call Today

Free Survey &amp; Estimate

Ashbauchers' Tin Shop

Established 1915  
116 N. 1st St. Phone 3-2615  
Decatur, Ind.