

Women Find Office In Home Eases Work Burden

Routine housework includes more than cooking and cleaning; there is a large and invisible burden of record-keeping similar to office routine, reports the Construction Research Bureau, national clearing house for building information.

Bills, cancelled checks, insurance records and tax forms are but a small part of the clerical load that usually is dealt with in living or bedroom, with unsightly results. Carpets become ink-stained, paper clips and fasteners damage vacuum cleaners, and important records are jammed out of sight and mislaid.

But many householders have solved the problem by creating an "office-area" which merges subtly into the warm home decor, avoiding the cold business look. Such an area yields all the efficiency advantages of an office and is useful for those who run small businesses from their home or perform part of their management functions there. For such people, a definite office-area clarifies for Internal Revenue auditors the proportion of home expense deductible from business income as office costs.

Office Plan

How is such an office set up? Here are some helpful recommendations:

1—Selecting the location is simple if there is unused space such as a basement or attic. Other possibilities lie in converting a bedroom no longer occupied by a married child or a den rarely used. Finally, excellent home-office areas can be obtained by sectioning off one end of a long living room, or irregularly shaped room with room dividers.

2—Decoration for these areas can be given a warm dignity by blending them into the home decor with properly selected wall-papers or plywood panelling. A wall of shelving filled with books will give a library atmosphere, and a resilient flooring such as Kentile vinyl asbestos tile, available in a wide variety of colors and designs, can continue the mood. Such a floor, too, is easily cleaned of office-work ink stains from falling ball-point pens, inked stamp pads or rubber stamps and can be swept easily free of paper clips and fasteners.

No "Cold" Effect

3—The equipment needed for paperwork efficiency are a desk, file cabinets and a typewriter, but the cold effect of these is easily dealt with. You can easily secure unpainted wood pieces, including desks styled like home furniture, and narrow wooden chests of drawers which may be adapted to use as file cabinets.

These can be painted, stained and — shellacked, or given an unusual finish by use of the new plastic veneers, which can be glued onto wood or metal surfaces by their own adhesive backing. The final effect can be an office blending beautifully into the relaxed mood of one's home.

Such an office area will help avoid many problems about unpaid bills or insurance premiums mislaid records and possible questions by the tax man.

New Trend To Billiard Room In Homes

Popularity of the game of billiards is booming nationally, and many a family would like the pleasure and status that comes with having their own private billiard room. But these homeowners hesitate before installing a full size table in basement playroom or attic, since it is 9 feet long, 4½ feet wide, quite heavy and cannot easily be moved. The space occupied, therefore, would seem to be permanently invested in one game.

However there is a way to use your space and have it too, reports the Construction Research Bureau, a national clearing house for building information, which has studied how homeowners themselves have solved this problem.

Multi-Purpose Room

The Bureau passes along the following tips on how a billiard room can easily be transformed to a multi-purpose room without coping with the problem of moving a heavy table.

1—First of all there are smaller tables available to fit your playroom size, an 8 feet long by 52 inches wide billiard table, and one 7 feet long by 48 inches wide. Also, these tables are portable and have folding legs.

2—Regardless of size, these tables all can be easily transformed into official size ping-pong tables without putting them away or moving them. Simply put a plywood 9 feet long and 5 feet wide on top of the table, add a net and start to play. Any local lumberyard or building supply dealer will cut a plywood board to these dimensions for you, can paint it yourself, green for visibility of ping pong balls, and a white stripe along the edges and down the center line.

3—The ping-pong table then can be converted into a party or dining table by removing the ping-pong net and covering with a tablecloth. Refreshments, buffet style, or a served meal can be enjoyed at such a table.

Need Good Footing

4—Both billiards and ping-pong are best played on a resilient tile floor such as Kentile travertine, solid vinyl tile, which never requires waxing and is easily cleaned of food and liquid refreshment spillage when the table is converted to dining. This floor is easily installed by the homeowner himself, if he wishes.

GETTING THE MOST... FROM YOUR GARDEN

by Dr. W. A. Liddell
Director of Information, Asgrow Seed Company

ESSAY ON WHEN TO PICK

Newcomers to gardening, and even some old-timers who should know better, often have a hard time learning to tell when their crops are at their prime for picking. Who among us hasn't wasted a dozen ears of corn, looking for six ripe ones? Or ruined a couple of melons, looking for a "good" one. And how many of us let our squashes and cucumbers, beans, and beets swell beyond the edible stage, under the mistaken notion that things always get better as they grow older and bigger?



So, our little sermon for this essay draws its inspiration from one of our good friends in the food processing industry, who makes a big thing of "The Fleeting of Perfection." The fact is, with some kinds of vegetables there is a fleeting moment when they are ready to harvest for your table.

Take peas, for example. The time to begin checking your crop is about 21 days after the blossoms appear. You have a choice in how you harvest your crop. You can make two or three pickings, starting with the pods lowest on the vines, or, with shorter-vined kinds, you can wait until the top pods are just a bit shy of full maturity and then harvest all the pods at once. Your decision should be determined largely by the kinds you plant and the size of your planting.

Corn is another vegetable that matures about 21 days after blossoming — that is, after the silks emerge from the husk. Like peas, corn will mature faster when the weather is hot, so this period may differ, depending on the weather as the crop approaches maturity. Like peas, too, corn passes very quickly from the best eating stage — usually in a day or two — so don't wait for the kernels to get still bigger or yellower in color!

Summer squash and cucumbers are two vegetables which suffer from being left too long on the bush or vine. Whether you grow yellow, green, or white varieties, the time to pick summer squash is when the fruits are still young, not more than three or four days after the blossoms begin to dry, while the skin is still very tender and the seeds undeveloped. The same for cucumbers, though it may take a day or two longer after the blossoms drop. In any case, pick them

while the warts are still firm and knobby, before the fruits balloon to a diameter of 2½ inches. According to some connoisseurs, cucumbers are more digestible when eaten young, skin and all.

Beans — snap and lima. Snap beans usually take a week or ten days to reach prime picking stage after the blossoms drop, but this is another vegetable that is better to pick on the young side. Don't wait for the pods to make maximum size. By then they are quite seedy, fibrous, and sometimes stringy. With limas, it's the other way around. They're hard to shell if you pick them in the "baby" stage. If you want baby limas — butter beans they're called in many places — use one of the small-seeded varieties, like Clark's Bush, Henderson's Bush, Jackson Wonder, or Early Thorogreen.

Beets, carrots, and other root crops are delicious when young, but can be left a bit longer than other crops, before harvesting, though radishes become strong and pithy if not pulled within three or four weeks after planting. Even the others may become woody if you leave them indefinitely.

Harvest lettuce, spinach, endive and other leafy crops before the seed-stalk begins to form. Non-heading leaf lettuce can be harvested a few leaves at a time.

Have you ever eaten tiny young summer squash, uncooked but thinly sliced and marinated in olive oil and vinegar, with a few herbs? A gift from the gods!

If you would like free information about how to grow vegetables in your back yard, send your name, on a postcard, to Asgrow Garden Guide, PO Box 406, New Haven 2, Conn.

Home Damage By Storm Gets Tax Deduction

With the hurricane season approaching, many homes may suffer damage from flooding rain and high winds. Such casualty losses are deductible from taxable income, reports the Construction Research Bureau, national clearing house for building information.

It must be remembered that to be deductible, a casualty must be sudden, unexpected or unusual. You cannot deduct property losses due to normal wear and tear, or decay over a long period of time. The casualty need not be only caused by storm, but can be man made. If hoodlums smash your windows, break down a fence, or kill a valuable pet, you have a casualty loss.

How much can be deducted? Well, first you must reduce the loss by whatever insurance is received on it. But the general rule applying is that you may claim the decrease in fair market value of your property, but never more than the original cost plus the improvements.

Keep Cost Records

Therefore it would be wise to keep a record of the cost of property improvements, even when the homeowner does them himself, as in finishing a basement playroom by putting down a floor of vinyl asbestos tile. The value of such an improvement, of course, would include the labor put in by the homeowner as well as the material cost of the flooring.

It may be necessary to prove the loss to the Internal Revenue Service. This can be done with photographs plus estimates of repair costs by outside firms.

In measuring the casualty damage by such repair estimates, however, there are 4 rules set up by the Internal Revenue Service.

1—The repairs must be necessary to restore the property to its former condition.

2—The amount spent for repairs must not be excessive.

3—The repairs only fix damage caused by casualty, nothing else.

4—The value of the property isn't greater after the repairs than it was before the damage.

The Internal Revenue Service is well equipped with information on all sorts of probable repair costs and knows what damage is logical. The fact that your basement playroom was flooded, for instance, doesn't necessarily indicate damage. For example, if you've put down a vinyl asbestos floor such as Kentile properly, they know it very likely wasn't damaged much. If at all, since such floors have come through famous floods intact. Such a claim would require real proof.

Household Scrapbook

By Roberta Lee

Linoleum Repair

Repair scratches, dents, and tears in linoleum by scraping or coarse sanding a small pile of linoleum dust from a scrap piece the same color as the damaged area. Mix this dust with clear lacquer or quick-drying varnish into a paste. Smooth into the damaged spot with a putty knife, and when dry, buff it smooth with fine steel wool and boiled linseed oil. Then wax. Part of the filler can be tinted with oil color when necessary to match inlaid designs.

Snag-Proof

To prevent wooden garment hangers from snagging clothes or other fabrics, give them a coat of clear shellac. The wood won't be inclined to chip or splinter if protected in this way.

Mr. Farmer...

COME SEE AND
GET OUR DISCOUNT PRICES

ON

4" 5" 6" 8"

CONCRETE DRAIN TILE

"GOVERNMENT APPROVED"

PHONE 3-2561

DECATUR
READY-MIX CORP.

E. OAK & FORNAX STS.

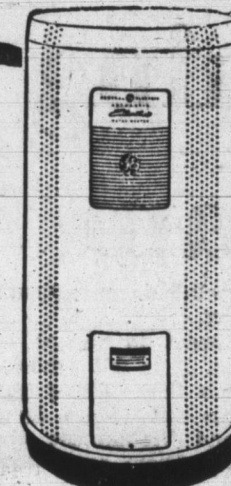
DECATUR, IND.

ATTENTION: I & M
CUSTOMERS!



\$25.00 TRADE-IN
FOR YOUR OLD
WATER HEATER

Then Only \$1.79 Per Month



... pays for this
G-E WATER HEATER!

AUTOMATIC ELECTRIC



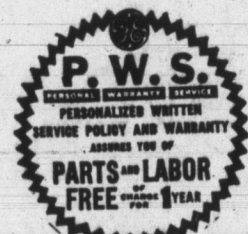
WATER
HEATERS

★ COMPLETELY AUTOMATIC!
★ NO FLAMES, NO FUMES,
★ NO FLUES!
★ INSTALL ANYWHERE!
★ 10-YEAR WRITTEN
PROTECTION PLAN!



FOR THE FINEST IN WATER-HEATING SERVICE!

SEE US TODAY!



\$25.00 TRADE-IN

TOWARD THE PURCHASE
OF A PSP FLAMELESS
ELECTRIC WATER HEATER

Offer Good To I & M Customers Only!

FAGER APPLIANCE &
SPORTING GOODS

147 S. 2nd Street

Phone 3-4362

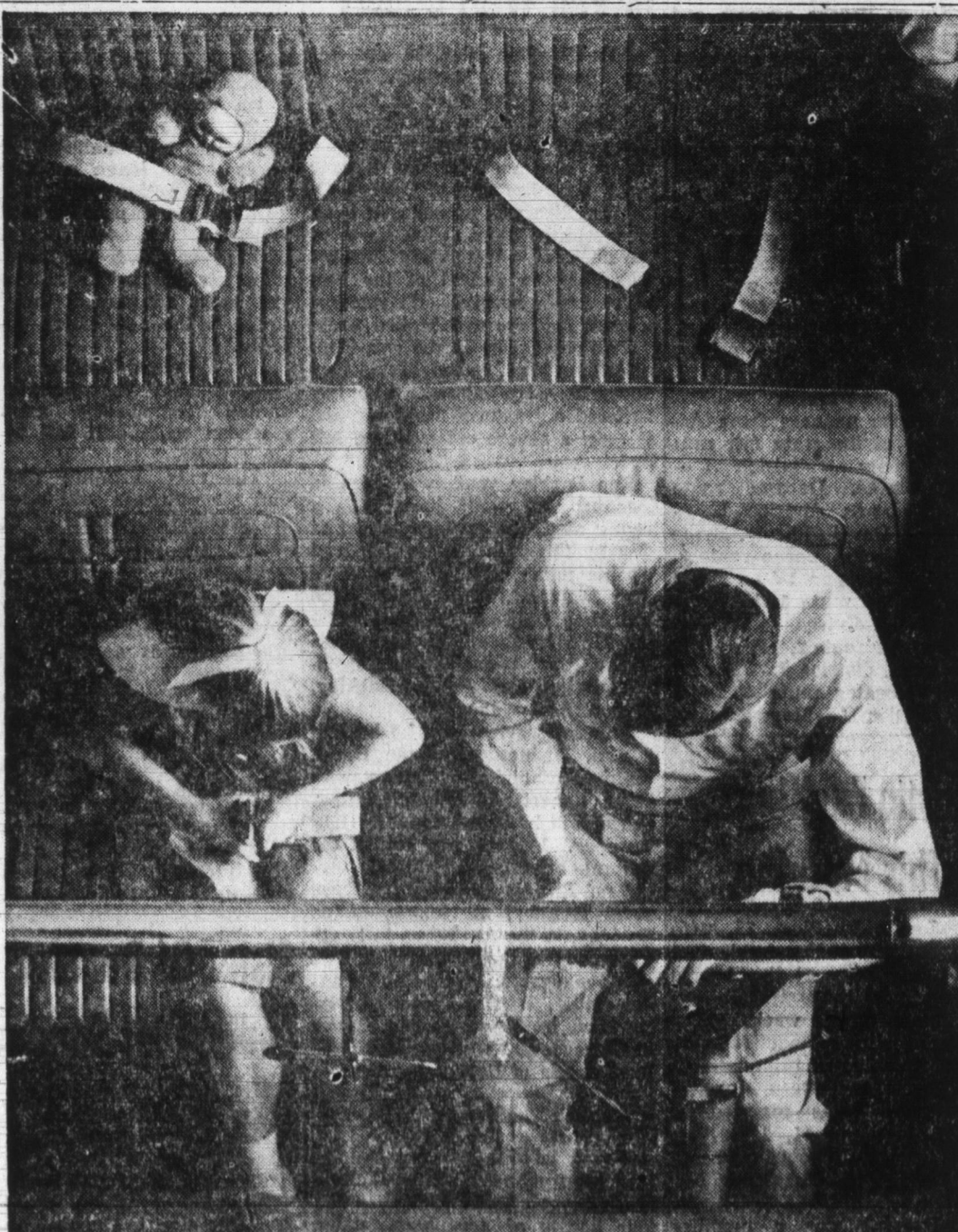


LESS HOUSEWORK
BETTER APPETITES

Since we installed
GENERAL ELECTRIC
CENTRAL HEATING & COOLING

ASHBAUCHERS' TIN SHOP

Established 1915
116 N. 1st St. Decatur, Ind. Phone 3-2615



BUCKLE UP!

Seat belts can save at least 5,000 lives a year—reduce serious injuries by one-third

Isn't it time to heed this advice from the National Safety Council? Isn't it time to protect your loved ones and yourself by installing seat belts in your car?

Seat belts are life belts. Without a seat belt, when your car stops suddenly in a collision or emergency, you keep going with tremendous force. Into dash, windshield, window, or back of front seat. But with a seat belt, you "stay put" ... with a vital Margin of Safety between you and serious injury.

Don't wait. Install and use seat belts now. You'll drive with a new peace of mind.

Buckle up for safety with seat belts!



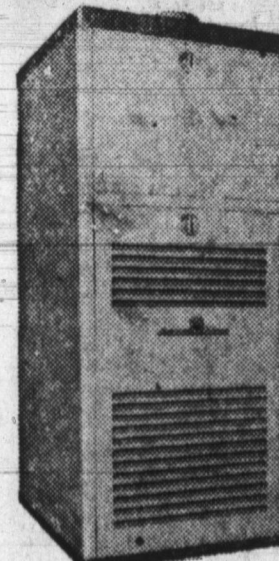
Published to save lives in co-operation with The Advertising Council and The National Safety Council.

LET US INSTALL AN
AMERICAN FURNACE

buy from us
with
CONFIDENCE
Look for this emblem

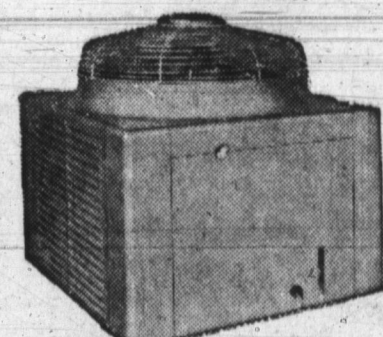


ELECTRIC
HEATING-COOLING
DEALER



... and for Summer
Comfort combine it
with an
AIR CONDITIONER

FREE ESTIMATES!



HAUGK PLUMBING
AIR CONDITIONING
HEATING

209 N. 13th Street

Phone 3-3316