

## Doors Do More Than Open, They Key Character of Home

Indoors, outdoors — the right doors can be a big asset to the appearance of a home.

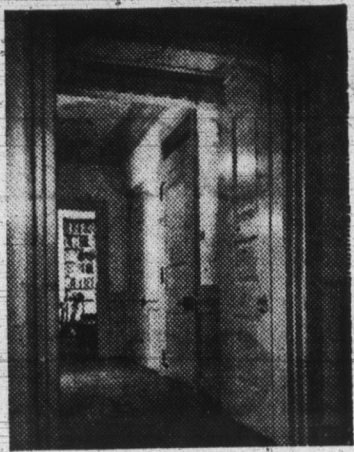
Take the front entrance, for example. It's a key spot that calls for careful selection of the door, because that's where visitors and guests receive their first real impression of a house.

If a house is of Colonial or traditional architecture, a wood panel entrance door is almost mandatory. A trip to a building materials dealer will turn up a wide selection of styles and sizes in panel doors of ponderosa pine — all in stock or readily available. And the beauty of it is that many of these stock units are authentic reproductions of panel doors which were originally custom-made for 18th-century Colonial houses.

The modern copies make it easy to add a genuine Colonial touch without the need for costly custom work.

Interior doors are also available as stock items in authentic Colonial styles. Often doors are used as a unifying element by installing the same style at room entrances throughout a house.

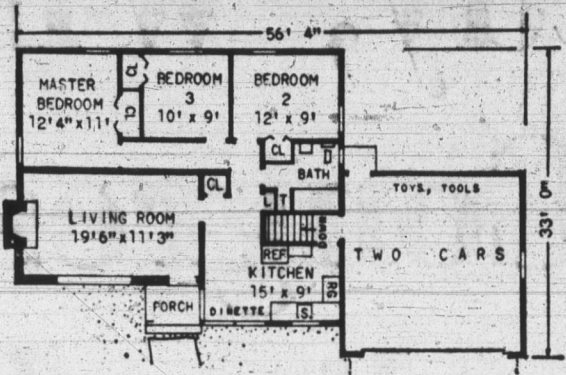
For clothes closets, however, wood louver doors are often pre-



White-painted panel doors of ponderosa pine line handsome hallway leading to library of this Colonial home.

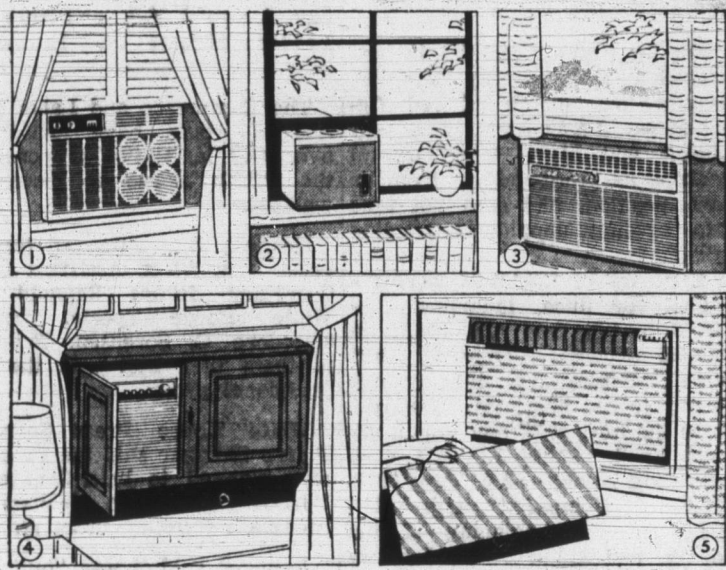
ferred. This type is gaining in popularity because the louvers permit air to circulate freely, helping to keep clothes fresh.

A colorfully illustrated 16-page booklet showing numerous traditional as well as many unusual ways to use stock wood doors has just been published. For a free copy of The Book of Door Ideas, write to Dept. HP, Ponderosa Pine Woodwork, 39 S. La Salle St., Chicago 3, Ill.



**DESIGN C-2086.** This is a house designed for a nice front view and for a family who want a lot of living in moderate space. The plan has 978 square feet, but still offers three good bedrooms, all at the back for privacy and easy handling. There are folding-door closets in each plus linen and towel closets near the compact family bathroom. The kitchen and dinette are at the front with big windows to face the view. The dinette corner windows are magnificent full-length and make a lovely feature at the front of the house. The living room is at the left, with a handsome clear picture window and a fine fireplace. The front entry porch serves as a shield for the living room and the service entry is via the big two-car garage making excellent circulation possible through the house. For further information about Design C-2086 write to Illustrated Publications, Inc., 117 West 48th St., New York 36, N. Y.

## Seeking Cool Comfort? You Can Pick and Choose



Something for everyone—here's a sampling of the many types of room air conditioners available this year: 1. Standard window unit; 2. Small size for casement windows; 3. Permanently installed through-the-wall model; 4. Window unit comes in wood cabinet; 5. Through-the-wall model with removable front panels that can be covered to match room decor. Each of these room air conditioners cools, dehumidifies, and filters the air.

It may well be true that you can't please everybody, but manufacturers of room air conditioners have come mighty close—especially in recent years.

First, the industry has voluntarily established a certification program which verifies the cooling performance of the room air conditioners.

Under this program, room air conditioners are tested by an independent laboratory to make sure the cooling capacity (in British thermal units per hour) and amps and watts are represented accurately. More than 90 per cent of all room air conditioners manufactured for sale in this country now are included in the certification program, which is sponsored by the National Electrical Manufacturers Association.

Second, consumers have a wider choice of units—in terms of cooling capacity, types and styling—than ever before. For example, room air conditioners are available with a cooling capacity as low as 3,300 Btu's per hour, and as high as 32,000

### NICE WARMTH

**Hammer Hint**  
To prevent scratches and mars on your furniture while you are doing some upholstery, and to prevent the tack hammer from slipping off rounded tack heads, put a strip of adhesive tape on the head of your hammer.

There is a warmth and friendliness about wood paneled walls which no substitute of man has ever equaled. The rich patina of grain and texture is different in every board.

## Homesickness Averted

# House That Grew With Family Saved Them From Moving Pangs

To move or not to move—that was the question facing the R. S. Jacksons of South Euclid, Ohio. With the arrival of their fourth child, their three-bedroom house had become too cramped for comfort, but they were reluctant to leave their pleasant neighborhood.

They solved the problem by building a two-story addition to their house on quiet, tree-lined Laclede Road.

Mr. Jackson placed his design for the addition in the hands of Squires Construction Company. The result is a new, over-sized garage and above it a bedroom, bath, walk-in storage area and a large linen closet.

The bedroom, now occupied by Peter, 6, and Steve, 5, features a large closet with storage drawers and wood louver doors, and two double-hung wood windows. The louver doors are ideal for closets because they allow air to circulate, helping to keep clothes fresh.

To integrate the new addition with the original house, a short overhang over the front porch was extended across the front of the addition. UL-labeled asphalt shingles like the ones which had provided years of protection on the old roof were used on the extended overhang as well as on the new roof area.

Siding was also matched—clapboard upstairs and vertical panels on the first floor. New louver shutters, painted to match exist-



**AFTER**—new addition, above, gives house better proportions, more living space. **BEFORE**—original house, right, had no garage, was too cramped.

ing ones, now flank the front window of the boys' room.

Although one of the materials used in remodeling can't be seen, the Jacksons consider it vital. It's mineral wool insulation, installed in walls and ceilings to meet recommended standards to help keep heating costs low and to make the new addition comfortable all year 'round.

"This past winter was a bad one," Mrs. Jackson commented, "but the boys' room was warm even when the temperature outside dropped to zero."

To keep construction costs



down while making the new section as attractive as possible, the Jacksons used stock woodwork of ponderosa pine. Windows, exterior shutters and louver doors are all precision-made units which came from the factory ready to be installed and painted.

## Factory-Primed Panels Reduce Building Costs

Experts say one way to cut costs on a building project is to install factory-primed panels. Their use eliminates one-third to one-half the work of applying the finish coat to the surface.

Another advantage is that the finished surface, because the undercoat is smooth and even, is top-notch in appearance.

Many lumber dealers now carry in stock prime-coated Masonite Presdwood for various purposes, both exterior and interior. These include popular Peg-Board panels.

Because of factory-precision work, the special primecoat on these hardboards is unusually dense and smooth. In a neutral gray, the coating resists chipping or flaking when sawed. It may be covered with either light or dark tones of oil emulsion paints or enamels.

## Summer Baby Will Need Winter Wool

They gurgle and wail, and cuddle and coo. Maybe there's one on the way for you. What? A baby, of course.

If there is, you're making plans for booties and sweaters, blankets and diapers, bottles and bassinets, rattles and dolls for baby's comfort and fun. But don't overlook plans for making your house a healthful, comfortable place where the new baby can flourish.

Before winter comes, you'll want to eliminate drafts and



Baby's going to be snug as a bug in a rug next winter, even when he plays on the floor. Daddy's installing mineral wool insulation to keep heat in, drafts out, and fuel bills down.

make sure walls and floors won't be cold, especially when baby starts to crawl. You can do this, and add to cool summer comfort as well, by having your home thoroughly insulated with mineral wool.

Houses that are well insulated cost less to heat in winter and less to air condition in summer — an important consideration, since fuel costs are often a big item on the family budget.

It's easy to insulate a house that's being built. Batts and blankets of mineral wool can be installed in floors, ceilings and walls before interiors are finished. A house already finished can be insulated by a contractor who uses pneumatic equipment to blow mineral wool into ceilings, walls, and floors.

## Allergy Ills Relieved By Air Conditioner

If asthma or hay fever has you wheezing and sneezing your way through the summer, take heart. You may be able to cut down on the itchy nose and labored breathing by simply turning on the room air conditioner. The Medical Committee of the Allergy Foundation of America says that as long as you stay in an air-conditioned room, your symptoms often will be relieved.

And if you have an air conditioner in your bedroom, you won't be so apt to be kept awake in the nightly battle for a breath of pollen-free air.

In using room air conditioners for the relief of symptoms, the Allergy Foundation cautions that it is important to set the thermostat of the air conditioner properly so that the temperature within the room is not more than 12° below that of the outside air. "Extreme cooling will often irritate the membranes of the nose and bronchial tubes," the voluntary health organization says in its booklet, "Asthma, Hay Fever and Other Allergies."

Recognizing the benefits of air conditioning, the Federal Government now allows a medical expense tax deduction for room air conditioners purchased when physicians prescribed them as medically necessary for heart patients, asthmatics and allergics. The new deduction went into effect for the first time in 1962.

There were 97 million days of restricted activity reported due to asthma and hay fever in 1959

and 1960, the Allergy Foundation states in its pamphlet. The victims were allergic, or unusually sensitive, to air-borne dusts, mold spores, and pollens from weeds, grasses, trees and plants which do not affect non-allergic persons. Seasonal hay fever especially is caused almost entirely by these air-borne allergens or inhalants.

Room air conditioners can reduce the amount of pollen in the air at the height of the ragweed season by as much as 98 per cent, tests by Dr. Orren D. Chapman, head of the Bacteriology Department at Syracuse University, showed.

Other forms of relief from the distressing symptoms of asthma and hay fever are drugs and series of injections which help desensitize allergic patients as long as they continue the treatment. Immunization by a single injection is also under study at the present time, the Allergy Foundation states in its pamphlet. The free pamphlet may be obtained by writing the Allergy Foundation of America, 801 Second Avenue, New York 17, N. Y.

### Finger Protector

Protect your fingers from painful slivers or scratches when you are using steel wool to scour pans or perform other chores around the house, by cutting a hollow rubber ball in half and packing the halves with the steel wool.

### FOR LASTING COMFORT

Mineral wool insulation is one home building product that requires no maintenance. Since it is made from rock, glass or slag, it is permanently fire- and vermin-proof. It can be installed by a home owner or by a contractor,

## Get Design Help For Remodeling

Do you need design help for the remodeling or room addition you want?

This is available now through a nation-wide network of Design-Service-Counsel lumber and building materials dealers designated by Masonite Corporation as one-stop home improvement headquarters in their communities.

Take your problem to the D. S. C. dealer, who will counsel with you and turn over your ideas to a national design service. In a few days, you'll have a rendering that permits you to visualize before you modernize, working drawings and a materials list.

D. S. C. dealers can help you also with labor requirements and finishing. For the name of your nearest dealer, write the Masonite Home Service Bureau, 111 W. Washington St., Chicago 2, Ill.

### LOOK FOR UL LABEL

Only asphalt shingles with the Underwriters' Laboratories label have passed rigid tests for fire resistance. Both the V.A. and F.H.A. require the UL label on asphalt shingles used on homes built under their rules.

## MIXING EXPERTS!

Our Years of  
Experience In  
The Mixing of  
READYMIX  
CONCRETE

Has Qualified  
Our Personnel  
As Experts  
In This Business.

YOU CAN  
BE CERTAIN  
of receiving  
correctly propor-  
tioned Readymix  
concrete that  
will meet your  
specifications.

10% Discount  
ON ALL  
READYMIX  
CONCRETE

# YOST

GRAVEL  
READYMIX,  
INC.  
RURAL ROUTE 1  
DECATUR, IND.  
PHONE 3-3114



LESS HOUSEWORK  
BETTER APPETITES

Since we installed  
GENERAL ELECTRIC  
CENTRAL HEATING & COOLING

ASHBAUCHERS' TIN SHOP

Established 1915  
116 N. 1st St. Decatur, Ind. Phone 3-2615

CALL 3-2561

FOR

Ready-Mix Concrete

FROM

DECATUR  
READY-MIX CORP.

E. OAK & FURNACE STS.

DECATUR, IND.

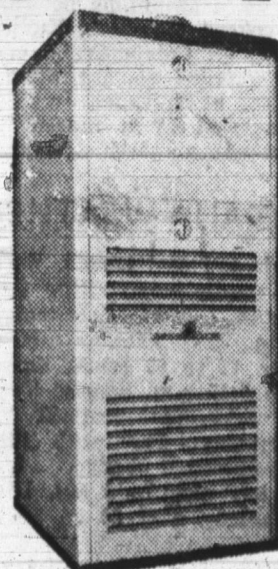
FOR YOUR: BASEMENTS  
BUILDINGS  
FOUNDATIONS  
DRIVEWAYS  
SIDEWALKS

LET US INSTALL AN  
AMERICAN FURNACE

buy from us  
with  
CONFIDENCE  
Look for this emblem



1&M RECOMMENDED  
ELECTRIC  
HEATING-COOLING  
DEALER



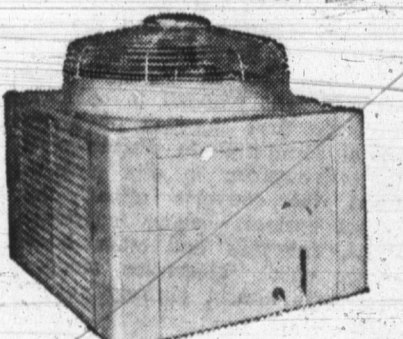
HAUGK

209 N. 13th Street

... and for Summer  
Comfort combine it  
with an

AIR CONDITIONER

FREE ESTIMATES!



PLUMBING  
AIR CONDITIONING  
HEATING

Phone 3-3316