

AVOID CONDENSATION

In colder climates, when wood windows with insulating glass or triple glazing are used, frost and moisture won't collect on the glass, and no frost will form on the wood sash.

When the
TIME
Comes To
BUILD
You Can Be
Sure of
BUILDING
With The
BEST

If You Use
YOST
READYMIX
CONCRETE

10% Discount
ON ALL
READYMIX
CONCRETE

Order
YOST'S
CRUSHED GRAVEL
FOR YOUR
DRIVEWAY NOW!

YOST
GRAVEL
READYMIX, INC.
PHONE 3-3114
R. R. 1, Decatur, Ind.

Multiple-Pane Windows of Wood Mark Timeless Colonial Houses

One sure mark of the true Colonial house is the use of wood windows with many panes of glass. Not every house with this type of window is a good Colonial, but without it, a house can't honestly claim this title.

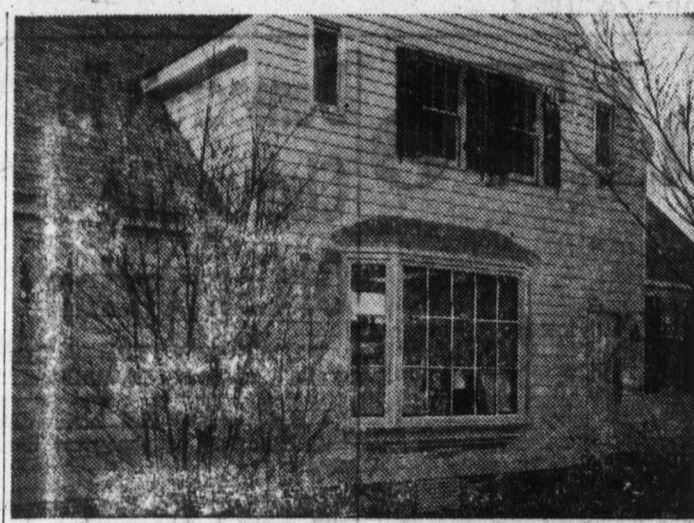
In general, two types of wood windows were used during Colonial days: double-hung and bay windows. The double-hung window, which opens up from the bottom and down from the top, is still the most popular type today. It is used widely in houses of differing architectural styles—contemporary as well as Colonial.

Bay and bow windows, originally used in homes and in stores as display windows, often are chosen for the space they add to a room as well as for their decorative effect, inside and out.

Today's families looking for the right windows for any house—Colonial, contemporary, or something in between—will find a wide variety of stock windows of ponderosa pine at their local building materials dealers.

In addition to double-hung windows and bay windows, which are assembled from stock units, homeowners can choose from several other types. These include: **Awning and hopper.** These two windows are similar, but awning units open up and out, while the hopper units open down and in. They are often stacked in groups of three or four, and are frequently found in contemporary or modern homes.

Casement. Windows of this



Stock wood windows in several styles give authentic Colonial appearance to this house. Bay window adds light and space to interior, interest to exterior. Diamond grilles in small windows are removable for easy window washing. Photo at right shows imaginative use of flowered shade on double-hung window.

type open out to the side like a door. They are often used above the sink and other hard-to-reach places because they are easy to open and close.

Sliding. An unobstructed view and ease of operation are characteristic of sliding wood windows. Both sliding and casement units suit all architectural styles and may be obtained with large

glass areas or small panes.

All of these window types are available in pre-assembled units made of ponderosa pine, ready for low-cost installation and finishing. Hardware and built-in weather stripping are included.

Tight Wood Windows Ban Bad Weather

Carefully made hardware, built-in weather stripping, and the slight flexibility of wood make today's quality wood windows weathertight when closed and latched.

Modern wood windows are treated chemically to make them warp-resistant, assuring easy operation and a weather-tight fit.

Casement Windows

When installing new glass in metal casement windows, leave at least a 1/8-inch clearance on all sides otherwise you are inviting cracked panes during cold weather. During cold weather, steel window frames contract, and if the glass fits perfectly tight, the frames will squeeze and crack it.

POPULAR

Seven out of ten new homes built in the nation have wood frame construction, according to a recent Forest Service survey. In the South Atlantic and Lake State regions 10 out of 10 houses were wood framed.



EQUIPPING THE KITCHEN to double as a family room is a good way to make efficient use of space in modern homes. An easy chair, a lamp or two, and possibly a couch where space allows, are the necessary furnishings for relaxation. A sturdy yet attractive table for family meals can double as a work place for hobbies. Thermopane insulating glass sliding doors in this "living kitchen" heighten the feeling of space and make the patio into a handy outdoor room.

Quality, Charm Of Colonial Design Easily Duplicated In Today's Homes

Colonial architecture, after more than 200 years, still ranks as one of the most popular of all home styles. This sustained popularity is due "in part to sentiment, and in the balance to good common sense," according to an article in House Beautiful's Building Manual, Spring-Summer 1963.

In the article, "You Can Create an Authentic Colonial House with Stock Millwork," the editors attribute the sentimental attraction to the fact that Colonial design gives us a nostalgic link with the past. The "good sense" part stems from the traditional style itself, which, they say, "remains today one of the most comfortable, livable, attractive forms available to us."

In the past, good modern Colonial houses with authentic details were hard to find. Today, however, it's no problem to build or buy a new home with honest Colonial styling. The main reason for this, according to the article, is that "the high cost of custom millwork has been out from the price of authentic Colonial architecture."

To illustrate this point, House Beautiful shows a modern Colonial house typical of those built on the Eastern Shore of Maryland from 1730 to 1770. The main entrance is simply styled and practical, with the front door recessed to provide protection against the weather. Small panes above the exterior entry provide light and are matched by similar ones just above the recessed front door itself.

Double-hung wood windows are used throughout the house except for a large bay window in the family (or "keeping") room at the rear of the house. Origin of multiple-light windows can be traced to early colonists who wished to evade higher taxes placed on larger window panes.

Most of the woodwork used, inside and out, consists of stock, factory-made items of ponderosa pine, available from lumber



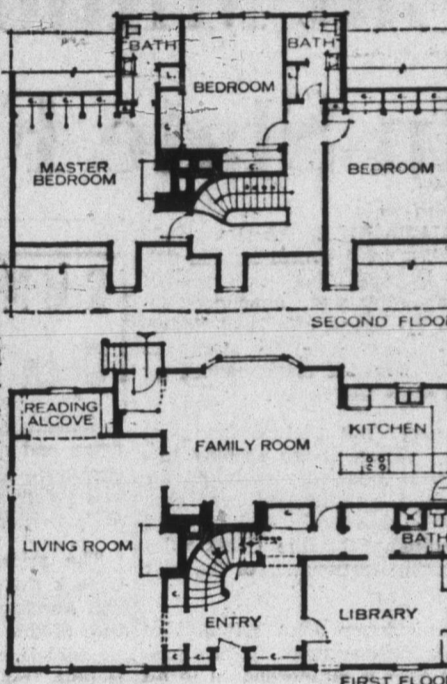
dealers and building materials suppliers throughout the country. Stock millwork used includes paneled doors, multiple-light windows, fireplaces, moldings and stairways.

Modern stock double-hung wood windows look like their prototypes but they have been improved in many ways. They fit better, operate easier and, thanks to built-in weather-stripping, are more weather-tight. In addition, complete package window units are available that permit faster installation and lower on-the-job labor costs.

Today exterior doors and windows of ponderosa pine are preservative-treated to guard against the effects of weather and to ensure a long, useful life.

A free, illustrated reprint of the House Beautiful Building Manual article about this Colonial house may be obtained by writing to Ponderosa Pine Woodwork Association, Dept. HP, 39 S. LaSalle St., Chicago 3, Ill.

Colonial home above is a recent reproduction of houses built in Maryland during the 1700s. A high degree of authentic Colonial charm was achieved inside and out by using stock woodwork accurately copied from 18th century designs. Wood windows with many small panes of glass, panel doors, narrow clapboard siding are among true Colonial features. Dormers on left and right help light two upstairs bedrooms. Middle dormer brightens circular stairway and hall on second floor. Floor plans are shown at right.

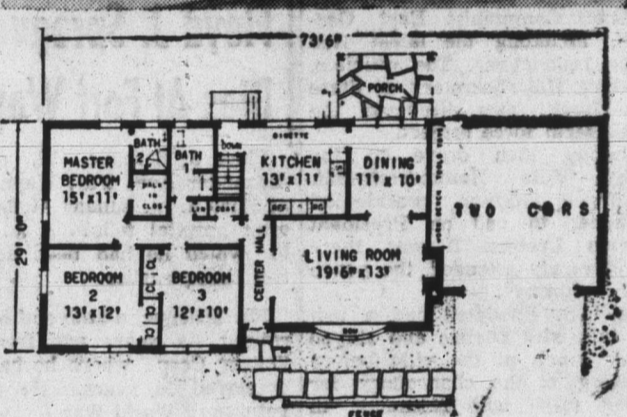


CLOTHES STAY FRESH

Louver doors on bedroom and hall closets assure proper ventilation of the contents. Mustiness and mold have less chance of getting started when wood louver doors are used.

PERSONALIZE DOORS

Decals or cutouts applied on wood panel doors add individuality to playroom, kitchen or children's room. Apply with thinned shellac and cover with clear lacquer.

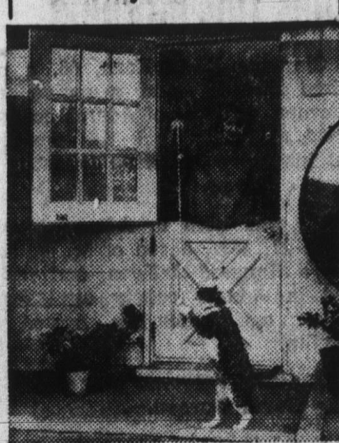


DESIGN C-2084. The long, low look is especially important in this ranch house, emphasized by the attached two-car garage. The kitchen has utilities and appliances laid out in the ever-popular L-shape, easiest on the homemaker and making the best use of space to provide a sunny dinette at the back windows. Windows are highlights in the dining room at the back, looking out over the dining porch, and in the living room there is a big bay window that makes the room seem more spacious. The center hall and bedroom wing are best insurance for privacy for the whole house. The master bedroom at the back has its own lavatory with stall shower that backs up to the main bathroom for plumbing economy installation. There are 1,400 square feet of living space. For further information on Design C-2084 write to Illustrated Publications, Inc., 117 West 48th Street, New York 36, N. Y.

MUCH MONEY

Families wanting to buy a new home will find that mortgage money is plentiful this year.

New Dutch Door Recalls Delights Of Days of Yore



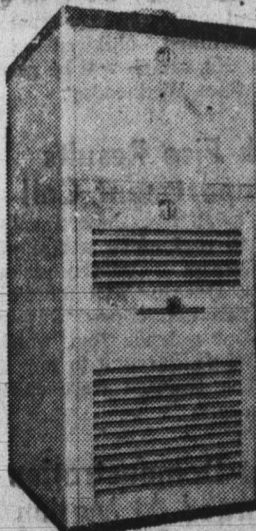
The Dutch who colonized our country introduced the double door, which has never lost favor. With its romantic air and practical application, the Dutch door is as popular today as ever it was. Doors like the one above can be bought from local building materials dealers, ready to be installed and painted or stained. They come in a variety of designs, and are made of sturdy ponderosa pine, which has been chemically treated to make them weather-resistant.

LET US INSTALL AN AMERICAN FURNACE

buy from us
with
CONFIDENCE
Look for this emblem

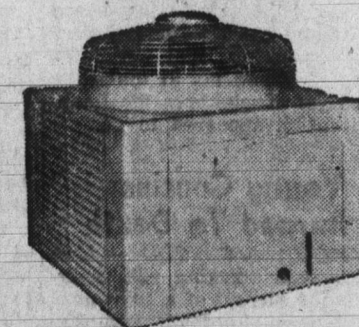


ELECTRIC
HEATING-COOLING
DEALER



... and for Summer
Comfort combine it
with an
AIR CONDITIONER

FREE ESTIMATES!



HAUGK

PLUMBING
AIR CONDITIONING
HEATING

209 N. 13th Street

Phone 3-3316

1st step
A
G-E
ELECTRIC
FURNACE
IS THE

**TOWARD
HOME
HEATING
AND
THE LAST
WORD IN
WHOLE
HOUSE
AIR CONDITIONING**

CALL
NOW
FOR
FREE
ESTIMATE

PHONE 3-2615

Ashbauchers' Tin Shop

Established 1915

HEATING, ROOFING, SIDING, SPOUTING, AIR CONDITIONING

116 N. 1st St.

Decatur, Ind.

Phone 3-2615

