

How Does Your Home Look From The Street?

From the street side, a home should present a pleasing picture that will provide neighbors and yourself with a pleasant feeling of family stability and beautiful living says the American Association of Nurserymen. Such an appearance can be provided by sound plantings of trees and shrubs that help fit the house into the surrounding landscape, instead of having it look stark and naked, or overgrown.

Small homes as well as large can easily be planted to present

a most pleasing appearance. Natural beauty by the use of trees and shrubs has no limitations — rich or poor can achieve it. You can plant it yourself or have it done by an experienced landscape nurseryman.

Stand on the sidewalk at a point opposite your front door and look directly at the house. Draw imaginary lines from where you are standing to the corners of your house. Any large trees should be planted outside



Drain Your Land with Concrete Tile

Farm land is made more productive when properly drained. Can be worked earlier. Soil fertility is increased.

But be sure your tile is CONCRETE. For properly made concrete gets better with age. Won't crumble or shale under frost. Always perfectly round and true. Dense, firm and strong. Also used for foundation work—dry wells—septic tanks—and other purposes.

4" 5" 6" 8"

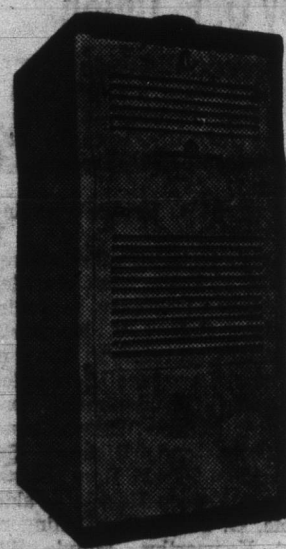
DECATUR READY-MIX CORP.

PHONE 3-2561

OAK & FORNAX STS.

DECATUR, IND.

COAL GAS OIL HEAT?



Whatever your choice of fuel may be... our Heating Experts are always ready to help you solve your heating problems.

FREE ESTIMATES

On Any Type Furnace For Your Home.

Expert Workmanship

By Trained Employees.

Financing Available

Have A Gas Permit? Call Us Now!

HAUGK PLUMBING AIR CONDITIONING HEATING

209 N. 13th Street

Phone 3-3316



Are You A "Land-Loser" Instead Of Land Lover?

of such lines, so your home will present an unbroken view of lawn.

Along the foundation in curved beds plant a variety of low-growing plants, with just slightly higher plants beside the doorway and grouped at the house corners. Avoid a straightline row of plants along the front of the house. This is poor practice.

Vary the plants so that you have evergreens and some flowering plants. In planting trees have at least one flowering tree to bring springtime beauty. Depending on the neighborhood and custom, you may wish a low, or high hedge along the street.

Your main objective is to plant a pleasing picture. Take care in the planting, standing off at a distance and observing it to get the effects you wish.



A stainless steel threshold which will last the life of the house has been placed on the market by United Industries, Inc.



"Kitchen of Tomorrow" with automatic push-button control.

Quality Nurseries Your Best Bet

Millions of home owners in the United States "lose" many of the benefits of having their own land by not caring for it properly, or by allowing overgrown shrubs and trees to detract from its beauty and value, says the American Association of Nurserymen. Many home owners appear to the public from the street as if they hate their land by the way they treat it says the association, when it should be a source of pride and inspiration because of its neatness and beauty.

Ragged overgrown landscape plants reflect poor housekeeping, and reduce the resale value of a home while attractive plantings increase the value some 15 to 20 per cent or more. Difference in the price obtainable for raggedly overgrown as compared to lovely planted grounds could reach as high as 30 to 40 per cent, it is said.

Best advice is to consult a reliable landscape nurseryman and have him work out a professional plan for increasing the value of the property, the prestige of the owner, as well as the respect of neighbors, with attractive plantings of trees and shrubs, it is stated. Sound landscaping and family garden living not only pays off in pleasure, but in sound real estate values. Pennsylvania state extension service survey found that 81 per cent of home owners who had landscaped their homes reported the landscaping had increased the value of the home by one-half up to 10 times or more of the total cost of the planting.

SCREEN SORTER

Dump jars of screws, bolts, and washers on window screening for sorting. When wanted items are selected, lift screen to funnel rest back into jar.

Kitchen Old? Update With New Range



For easy installation this one-piece electric range sets in between kitchen cabinets. Models of this type can be hung on a wall or set on a cabinet, as this one is. The convenient, eye-level oven above a four-burner, pull-out surface cooking top gives a modern look to any kitchen.

Tired of your old kitchen? One of the new, one-piece electric ranges can update it without expensive remodeling, since they slide into place without costly installation, yet give your kitchen a smooth, built-in look.

Requiring no installation beyond being connected with the electric circuit are the free-standing ranges. Some have one or two ovens below the surface elements, some have one oven above and one below.

Another range that requires no installation has one or two eye-level ovens. These can be hung from a wall or set on a cabinet.

Built-in units that require a minimum of installation are the "drop-ins" and "slide-ins" which come with adapter bands to integrate them with cabinets and counter tops.

The 1963 electric ranges come in decorator colors, from white and the pastels to brushed chrome and rich copper tones. Their accurate, automatic controls will update your cooking as well as the appearance of your kitchen.

HANG IT ALL...

Beautifully on Wall!



Any kitchen wall can be put to work beautifully by adding two elements—handsome new Delrin Peg-Board plastic fixtures used with a Peg-Board panel. Jointly researched and developed by Masonite Corporation and the E. I. du Pont de Nemours Co., the attractive white plastic fixtures fit solidly in the perforations, they're strong and their edges are smooth. Using this combination makes any kitchen more efficient. Lumber yards and hardware stores have the new fixtures. The new plastic fixtures and shelves will look and perform well, too, in utility rooms, storage closets, sewing areas and home workshops.

will be wise for the average purchaser to consider. These standards mean a more uniform better plant — an adequate root system.

or ball of earth as the case may be, will as sufficient branching for the size of plant and many other attributes of quality.

1963 Ranges Help Women Keep Kitchens Sparkling



Cleaning the new electric ranges is "easy as pie" with features such as these pull-out oven interiors with rounded corners. All of the 1963 electric ranges are easier than ever to keep clean.

Women want ranges that are easy to clean—and they're getting them. Electric cooking has always meant clean cooking, and the 1963 electric ranges make it even cleaner. Improved designs and special easy-to-clean features help keep the new electric ranges cleaner and also make them easier to clean when food does spill.

Surface cooking elements are self-cleaning, as are the rod-type broil and bake elements in electric ovens and broilers. Surface elements lift up, and some can be removed for easy access to the reflector bowls beneath. These, as well as the adapter rings around the surface elements, lift out for washing at the sink or in the dishwasher. Tilt tops on some models are another easy-clean feature.

Recessed tops and cook-tops with rims help prevent food that's accidentally spilled from getting into crevices or running onto the floor. Control knobs pull off for sudsing, and smooth enamel and other finishes are easy to keep sparkling clean.

Ovens on the 1963 electric ranges are also easier to clean. Some have interiors that pull out; others are designed to be completely lined with replaceable aluminum foil. Oven interiors have rounded corners, and dirt-catching cracks, crannies and seams have been virtually eliminated.

Oven racks and broiler reflectors are removable, and some of the self-cleaning heating elements lift up or down while others are removable to give access to the entire interior. Some oven doors lift off for washing at the sink. Others drop down to make it easy to reach inside.

Complete Your Landscaping

So you think you have a complete landscape job! Here's what complete landscaping accomplishes for the home owner, according to the American Association of Nurserymen. Check your property to see what you lack.

1. Good landscaping makes a lovely picture of the house from the street. It ties house and land together by use of trees and shrubs to provide a pleasing "lived-in" look to the house.

2. Sound landscaping includes a garden or outdoor living area, or patio planted for outdoor recreation, dining and entertaining.

3. Proper landscaping includes trees and shrubs that supply adequate shade and privacy to the living area. In locations where homes are exposed to cold winds in winter, proper planting of windbreaks offers more comfort on the property and lower fuel bills. It is cold winds that run up the fuel bills and if the house is protected by evergreen trees fuel costs are kept lower.

4. A well-planted property should provide plenty of cut flowers for use inside the home.

More varieties of trees and shrubs and annual and perennial plants are planted now than at any time in the history of this country.

FOR YOUNGSTERS

Raise a wooden chair for youngsters by screwing four rubber-tipped door bumpers into bottom end of legs. Bumpers can easily be unscrewed when no longer needed.

NO MORE TANGLES

An empty adhesive tape spool makes a perfect storage kit for a plumb of chalk line. When wound around spool and snapped back into original cover, the line stays dry, clean and can't scatter chalk through tool box. Or, hang it up on a nail!

PAINTING DESIGNS

When painting small designs on flat surfaces, draw designs on masking tape and cut out with a razor blade. The tape can then be pressed into position, and used as a painting guide.

Trade in a good town — Decatur.

IF THERE IS A NEW BUILDING IN YOUR FUTURE PLANS...

CALL 3-3114

FOR YOST

READYMIX CONCRETE

10% Discount ON ALL READYMIX CONCRETE

YOST

GRAVEL READYMIX INC. R. R. 1, DECATUR

Adams Builders Supply, Inc.

YOUR HOME IMPROVEMENT CENTER

JUST RECEIVED Leigh

RANGE HOODS

Leigh VERSA-DUCT RANGE HOODS

Exhausts vertically or out the back, through space-saver 3/4" x 10" duct. Clean flow filter of 2 layer meshed expanded aluminum traps grease. Filter snaps out for quick cleaning, snaps back just as easily. Push-button control light and fan.

5500 Series COPPERTONE

30-inch. Regular	\$23.18
\$33.11. Adams Price	
36-inch. Regular	\$23.95
\$34.22. Adams Price	
42-inch. Regular	\$24.73
\$35.33. Adams Price	

BRUSHED CHROMIUM

30-inch. Regular	\$30.95
\$44.22. Adams Price	
36-inch. Regular	\$31.73
\$45.33. Adams Price	
42-inch. Regular	\$32.50
\$46.44. Adams Price	

Leigh DUCT-FREE RANGE HOODS

Pulls in cooking vapors right from the range top, then cleans and refreshes the air before circulating. 2-Speed fan draws exhaust through 2 filters. 1st, aluminum mesh, traps grease and 2nd, activated charcoal, filters out odor. Push-button control fan and lights. Easy to install and it uses no cabinet space.

5100 Series COPPERTONE

30-inch. Regular	\$44.33
\$66.33. Adams Price	
36-inch. Regular	\$45.10
\$64.44. Adams Price	
42-inch. Regular	\$45.89
\$65.56. Adams Price	

BRUSHED CHROMIUM

30-inch. Regular	\$52.27
\$64.44. Adams Price	
36-inch. Regular	\$53.05
\$65.56. Adams Price	
42-inch. Regular	\$53.82
\$66.67. Adams Price	

ADAMS BUILDERS SUPPLY, INC.

ALWAYS PLENTY OF PARKING SPACE

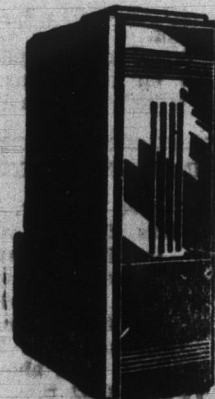
309 S. 13th St.

Decatur, Ind.

TIRED of FIRING the FURNACE?

USE YOUR GAS PERMIT

Let Us Install A



GAS FURNACE

G. E. Automatic Heating Ends Fuss and Bothers

for a FREE Estimate Phone 3-2615

ASHBAUCHERS' TIN SHOP

Established 1915 Heating, Roofing, Siding, Spouting, Air Conditioning 116 N. 1st St. Decatur, Ind. Phone 3-2615

Special Offer

ON A BUILT-IN KITCHEN

OVER 9-FT. OF PREFINISHED CABINETS WITH BUILT-IN APPLIANCES!

INCLUDING

- Over 9 ft. of Prefinished Red Birch Cabinets
- Electric or Gas Copertone Oven and Range
- Copertone Double Sink
- Copertone Hood with Fan
- Formica Counter Top

COMPARE THESE BEAUTIFUL QUALITY CABINETS AND BUILT-IN APPLIANCES

- Cabinets are select hardwood
- Popular Fruitwood Finish
- Magnetic catches
- Nylon roller drawer guides
- Suburban Copertone Appliances
- Cooperative savings on any other KITCHEN PLAN

FOR ONLY \$477.00

ARNOLD LUMBER CO., INC.
Winchester St. at Erie R. R. Crossing
OPEN FRIDAY NIGHTS 7-9 P. M.