


**AUTHORIZED DEALER OF**  
**Bigelow Carpets**



**People Who Know**  
**BUY BIGELOW**  
**NIBLUCK & CO.**

**Our Years Of Experience**  
**With READYMIXED CONCRETE**  
**Assures You Of Receiving The Best When You CALL FOR**

**YOST**

**READYMIXED CONCRETE**

**10% DISCOUNT ON ALL READYMIX CONCRETE**

**YOST**

**GRAVEL READY-MIX INC.**  
**R. R. 1, DECATUR**  
**PHONE 3-3114**

**Stock Woodwork Versatile**

**Owners Add Personality To Look-Alike Homes**

It's still possible in these days of standardization to achieve individuality in a home without facing the high cost of custom carpentry. The imaginative use of stock wood windows is one way to do it.



**Sliding**

Since windows of ponderosa pine are factory-produced in a wide range of styles and sizes, a home owner has a choice of many window effects. Windows of various styles, like furniture of various periods, can be used in combination to give a home a pleasantly interesting yet integrated atmosphere.



**Double-hung**

There are six basic types of wood windows, available ready to install. They are:

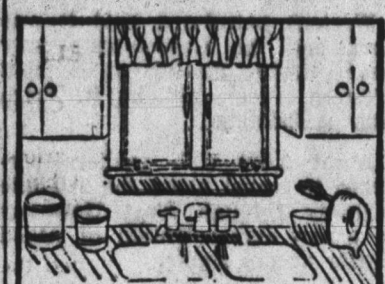
**Double-hung**—the most pop-

ular type of window. It is compatible with any architectural style.

**Casement**—operated by hand crank, these windows are hinged on the side to swing vertically in or out—preferably out.

**Awning**—hinged near the top, awning units swing up and out to let in air while giving protection from rain. They may be used in stacks, one above the other, or with fixed windows in bay or picture window arrangements.

**Hopper**—similar to awning windows, but swinging down and in, hopper windows generally are used as the bottom



**Casement**

row of a stack of windows. The opened sash deflects air upwards.

**Sliding**—often used with contemporary architecture, sliding windows are suitable for any room in the house. High, narrow sliders give privacy to bedrooms, with room beneath for furniture. Tall sliding windows, sometimes as big as doors, serve as window walls, often opening onto patios.

**Fixed**—these units are usually used in picture, bay, and bow windows in conjunction with movable windows.

**Engineers See to It**

**More to Today's Window Than Meets The Eye**

Dry air is as necessary to proper functioning of some modern windows as is glass itself.

While the best windows made for homes today might seem to consist only of glass and wood, they incorporate many specialized components selected by engineers so that the windows will operate properly for the life of the house.

The dry air is found between the panes of insulating glass, which consists of two sheets of glass sealed together at the edges. The air inside is dehydrated to prevent condensation.

**For Long Wear**  
Nylon bearings, vinyl gaskets, "non-galling" gears, water-repellent and preservative chemicals, and anodized weatherstripping are among the other refinements that make a significant difference between good windows and cheap ones—even though the two might look much the same.

Operating hardware—for instance sliding hinges with nylon bearings that fit into stainless steel tracks—is designed to work smoothly and eliminate any possibility that the sash might sag or rattle in the wind. Locks are made not only for se-

curity but to draw the sections of a window tightly together to seal out cold air.

**Gears Don't 'Gall'**  
When gears are used, as in the crank that operates a casement window, one gear may be made of metal, the other of plastic. This prevents the binding, or "galling," action of metal-to-metal contact.

All ponderosa pine window units are weatherstripped with specially anodized aluminum, stainless steel, or vinyl gaskets. Anodizing is necessary to keep aluminum from corroding and pitting.

**Water-repellent, preservative** treatment makes wood highly resistant to the effects of weather, forestalling warping, swelling, and shrinking.

**Factory-assembled**  
With old-fashioned house construction methods, window sash and frame were assembled at the site. The best modern technique calls for stock ponderosa pine window "units." A unit is completely constructed in a mill-work factory. Sash, frame, hardware, weatherstripping, balancing devices and all other parts are designed to work together.



**EARLY AMERICAN**—This glamor kitchen combines the charm of the old-fashioned "country kitchen" with modern, practical materials and conveniences. Woodgrain Formica cabinets are accented by pastel countertops, spaced-tile vinyl flooring.

**Kitchens Back in Style With Spaciousness, Color**

After a limbo of soap suds and garbage bags, the kitchen has entered a glamor era.

The heyday of the big, warm "country kitchen," fondly remembered as a family gathering place and the heart of household activities faded after World War II. As houses went up with lightning speed kitchens became small back rooms. Considered little more than mere necessities, they were designed to usurp a minimum of floor space; when supper dishes were out of the way, they were darkened and forgotten. Overwhelmingly, the predominant note was white.

Today, the kitchen has come back into style. Signalling this renewed importance, the chief characteristics are spaciousness and color.

The modern housewife demands sufficient working and living space in the area—for meal planning and preparation and also for imaginative decor. Architects and

builders have compiled, and personality has returned to the kitchen.

Advances made in building materials give the planner the widest array of colors ever available for achieving this personality. Today's housewife had a rainbow at her disposal.

Laminated plastic surfacing, for example, has become a kitchen standby because it combines household practicality with a large, versatile selection of colors for countertops, cabinets, drawer fronts and wall areas. A favorite decorating technique is to key the kitchen to rich Formica woodgrain surfacing on wall and base cabinets, accented by a bright-toned laminated countertop in either a solid color or a gay pattern.

The advent of vinyl flooring has brightened the kitchen underfoot. Vinyls available today include squares with accent strips to give a spaced tile effect, also metal and crystal embeddings which enliven

floors with eye-catching glitter. Color has even hit the ceiling, with decorative acoustical tile available in pattern selections.

**Wood Remains Top Material In Remodeling**



**Demonstrating the architect-owner's feeling that living does not stop at the walls of the living room, exterior siding and interior paneling of this home are identical**—redwood channel rustic pattern, rough-sawn and stained. The horizontal lines of the sliding effectively carry the eye through to the patio—with barely a hitch at the glasswall. The home was designed by architect Paul Hamilton for his own living.

Despite the constant development of new building materials by modern technology, the natural materials—wood and stone—remain popular. People still want the warmth of these materials in their homes.

Recent surveys of housewives' tastes indicate that wood paneling is still one of the first things a woman thinks of when planning her ideal living or family room. Architects, too, prefer wood when designing a home for their own use. While compiling information for the latest edition of Redwood Association found that three out of four of the architects who replied had used redwood in their own homes.

An accent wall of redwood paneling is an economical and effective redecorating device. Redwood paneling can be smooth surfacing or saw-textured, it can be applied in a number of patterns, horizontally or vertically, it can be left unfinished, varnished waxed, stained or painted. Architect Paul Hamilton, for his own home chose a channel rustic pattern, applied horizontally, for a shadow effect. He chose a rough-sawn surface for its warm texture and for ease of maintenance.

Since he used the same pattern for exterior siding and interior paneling, Hamilton stained his redwood in a natural tone. If he had not stained the exterior wood, it would have gradually weathered to a buckskin tan, and perhaps a driftwood gray. Although this effect is desirable in many instances, Hamilton wanted both interior and exterior wood to be the same, for a more complete merging of interior and exterior.

Like many architects, Hamilton chose redwood because of its versatility when he had absolute design freedom—when he was his own client.

The Redwood Association's new booklet, Redwood Interior Finishes discusses several different applications and finishes of redwood paneling. Both the Redwood Homes booklet and Redwood Interior Finishes are available from Dept. H1, California Redwood Association, 576 Sacramento Street, San Francisco 11, California.

**Timber Species**

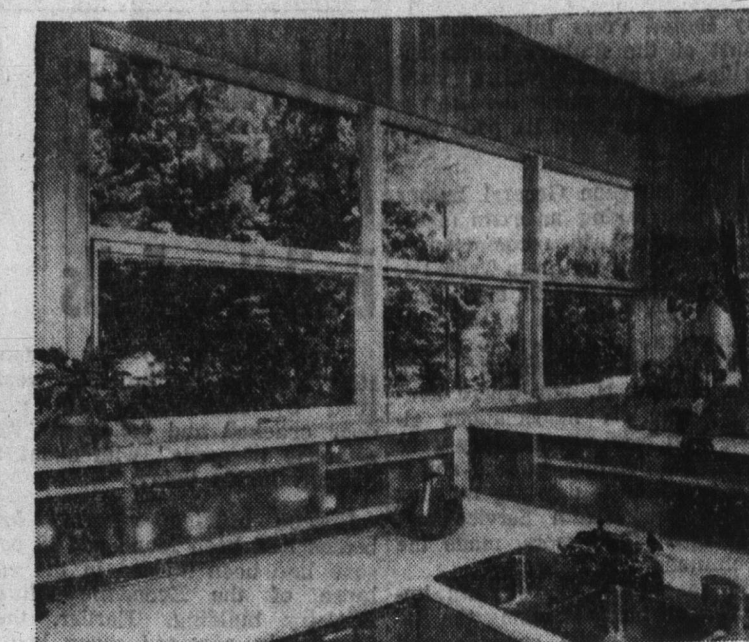
Five species comprise 90 per cent of the timber in the West Coast Douglas fir region. In order of commercial importance, they are Douglas fir, west coast hemlock, true firs (including five species), western red cedar and Sitka spruce.

**Design for Teen-Agers**



Photo by Seventeen

Practical comfort is the keynote of this cozy sleep-study-n-fun room for a teen-ager. The colonial theme of the setting is carried out in the desk, chair, bed and rocker which are Hitchcock-type reproductions in black with gold stencil designs. The decor is brought together through the natural richness of simulated birch flooring in Kentile solid vinyl woodgrain planks, which provide lasting, easy-to-care-for beauty. The white-on-red colonial pattern of the bedspread is repeated in the comfortably cushioned window seats in dormer windows and in the rocker cushions. Blending with the red cafe curtains and valances edged in white braid, the deep blue color of the walls provides a dramatic background for the setting while the pot-bellied stove in the corner and the other brass and wrought-iron accessories complete the design with imaginative and practical decorative touches.



**THIS SPACIOUS DAYLIGHT-WALLED KITCHEN** offers the ultimate in day-to-day living enjoyment, providing this much-used area with ample natural light and a restful view of the outdoors. The panel window system is designed around standard Thermopane insulating glass units and standard sash which help minimize initial building costs, assure prompt delivery by suppliers and speed construction time.

**No Job Too Big No Job Too Small**

**IF YOU NEED READY - MIXED CONCRETE A Phone Call Will Do !**

**We'll Be There When You Want Us And We'll Have Just The Right Amount**

**of Top Quality**

**READY-MIXED CONCRETE**

**DECATUR READY - MIX CORP.**

**E. OAK & FORNAX STS. Phone 3-2561**

**PAINT**

**YOUR**

**FARM BUILDINGS**



**NOW**

**GLIDDENS**

**STOCK FARM WHITE**

**BARN PAINT**

**\$4.35**

**GAL. In 5 Gal. Cans**

For fences, barns, out buildings, sheds, etc. Produced for use on stock farms, is formulated without lead and contains wood preservatives. The creosote-like odor tends to repel livestock.

**GLIDDENS**

**RED BARN PAINT**

A new, highest quality paint with excellent hiding power. Dries to a tough, glossy film that withstands the rigors of the roughest weather. Provides long-lasting protection for barns, sheds, granaries, silos, water tank exteriors, storehouses, fences, etc. Use it on exterior wood and metals.

**\$3.60**

**GAL. In 5 Gal. Cans**

**ADAMS BUILDERS SUPPLY, INC.**

**309 S. 13th St.**

**PLENTY OF PARKING**

**Decatur, Ind.**

**TIRED of FIRING the FURNACE?**

**USE YOUR GAS PERMIT**

**Let Us Install A . . . . .**



**GAS FURNACE**

**G. E. Automatic Heating Ends Fuss and Bother**

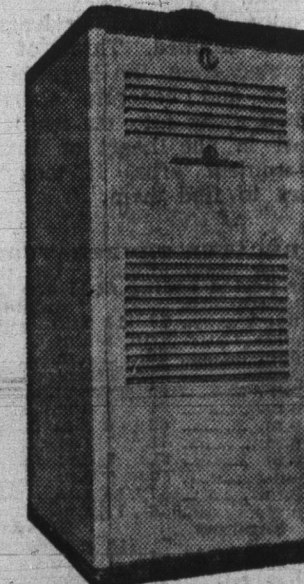
**for a FREE Estimate**

**Phone 3-2615**

**ASHBAUCHERS' TIN SHOP**

Heating, Roofing, Siding, Spouting, Air Conditioning  
116 N. 1st St. Decatur, Ind. Phone 3-2615

**GAS OIL COAL HEAT?**



Whatever your choice of fuel may be . . . our Heating Experts are always ready to help you solve your heating problems.

**FREE ESTIMATES**

**On Any Type Furnace For Your Home.**

**Expert Workmanship**

**By Trained Employees.**

**Financing Available**

**Have A Gas Permit? Call Us Now!**

**HAUGK**

**HEATING PLUMBING AIR CONDITIONING**

**209 N. 13th Street**

**Phone 3-3316**