

Low-Cost Air Conditioning Possible in Any Old House

A family planning to install one or more room air conditioners should give serious thought to having their house properly insulated. Good insulation increases the effectiveness of the units and will help to keep operating costs lower and summer comfort high.

Contrary to what some owners of older homes may think, adequate insulation can be installed in their homes at reasonable cost and with little fuss.

Here's how a competent insulation contractor installs an effective barrier of mineral wool insulation between the living space of an existing house and the outside weather.

In exterior walls, a brick, shingle, or a section of siding is removed at intervals and holes are drilled into stud spaces. Insulation then is forced under air pressure through a pneumatic hose inserted into the holes. The workman seals the holes and replaces the facing material after the wall is filled with insulation.

In the attic area, the hose is brought in through a window or ventilating louver, and the area between the floor joists is filled



Floor of attic is insulated by workman using special pneumatic equipment developed by mineral wool engineers. Air pressure distributes the insulation evenly and thickly for most effective heat barrier.

with mineral wool. Batts or blankets of mineral wool can be used here if the joist spaces are accessible.

Proper insulation now will also pay off next winter in terms of draft-free comfort and substantially lower heating bills.

Space Age Marvel Keeps All Foods At Flavor Peak

Jellied desserts like this hold their shape and flavor in a new electric refrigerator - freezer. There's plenty of room for such special dishes prepared in ad-

vance for a party, as well as generous supplies of family foods. Since frost never forms in the roomy freezer section of many of today's electric refrigerator-freezers, food packages are easy to see and to remove, and there's never any defrosting to be done.

SEE
COMPARE

HUMPHREY TENSION SEALED

ALUMINUM

COMBINATION STORM WINDOWS AND SCREENS

- Made from highest quality ALUMINUM.
- 100% rustproof.
- Self-lubricating. Smooth-gliding action.
- Completely maintenance free. Made to be forgotten.
- Streamlined appearance. No ugly screws showing.
- Combination windows made-to-order locally at no extra cost.
- Self-storing. Easily removed from inside for cleaning.
- EASY TERMS.



Kohne Window & Awning Co.

711 Winchester St.

JOHN KOHNE

Phone 3-2259

A - Frame Equals Economy



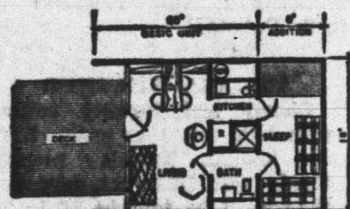
(Western Pine Association) SHEATHING of the all-in-one roof and side walls serves also as interior finish wall of cabin.

There's an epidemic of "vacation cabinitis" in the United States this year.

Symptoms of the disease are an itch to get-away-from-it-all, and an ache for the great outdoors.

Clinical research by the Western Pine Association has led to the release of a booklet, "Ideas for Vacationland Homes," which contains the designs of ten imaginative vacation cabins.

One of these, the "Engelmann Spruce" (named after one of the ten Western Pine region wood species), was recently built by a



(Western Pine Association) THE FLOOR PLAN of the "Engelmann Spruce" cabin shows how this compact design can be built in two stages—a basic unit 20 x 18, and additional sleeping room 8 x 18.

family in northern Washington.

The materials cost for the cabin is less than \$1,000, and it can be completed, thanks to a simple A-Frame design, in about 105 man-hours—either do-it-yourself or with professional help.

The following steps comprise the simple construction process. A concrete block foundation is set on level ground. 4" x 10" Douglass Fir or Larch beams are set in place, and 4" x 4" joists are spaced 4' apart upon the beams. A floor of 2" tongue and groove Fir or Larch decking is then nailed to the joists.

Next, the seven A-Frame beams are bolted and raised into position, as are the front and rear walls. The sheathing of the all-in-one roof and side walls goes on next, followed by building paper and finally, Cedar lap siding. Finishing is all that remains.

The very simplicity of the "Engelmann Spruce" design provides a sleek contemporary look, inside and out. And the all-in-one roof and walls prevent precipitation problems.

A wall of windows facing the partially overhung deck, plus ample rear windows, admit much light and air into the cabin.

The interior, though compact, is far from crowded. In fact, the open plan fosters a free flow of activity from front living area, through middle service area, to rear sleeping quarters.

And up a sturdy ladder lies a sizeable, window-lighted loft for additional sleeping and/or storage.

Copies of the Western Pine Association booklet may be obtained from local lumber dealers, or by sending name, address and 10c for handling, to Western Pine Association, Dept. MC 13, Yeon Bldg., Portland 4, Oregon.

It's Easy As Pie To Freeze Crusts

It's as easy as pie and at least twice as fast to make pie crusts in quantity and freeze them in a modern electric freezer or refrigerator-freezer for ready use in the future.

Make a pastry "bank" by mixing and rolling out multiples of your pie crust recipe. Then stack the sheets on a cookie sheet or cardboard, separating the layers with a double thickness of cellophane or waxed paper. Wrap the stack in plastic film or foil and close the package with small clothespins.

Another method is to shape the dough into pie pans and stack them, with cellophane or waxed paper separations. Place an empty pie pan on top and wrap the stack for the freezer.

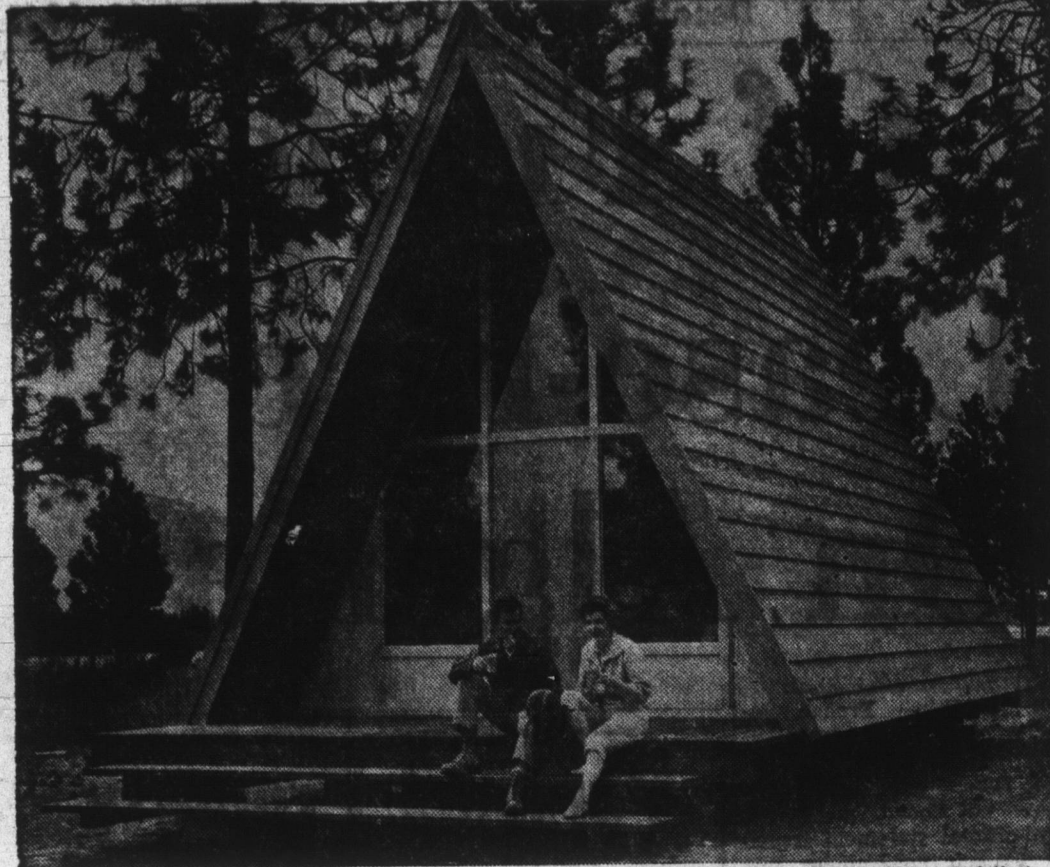
A third way is to bake pie shells, then freeze them. Wrap each shell separately in polyethylene or foil.

Before using flat sheets of frozen pastry, thaw them for 10 to 15 minutes. Pie crusts frozen by either of the last two methods can be baked without thawing, if desired.

AUTHORIZED DEALER
OF
Bigelow carpets

People who know
BUY BIGELOW

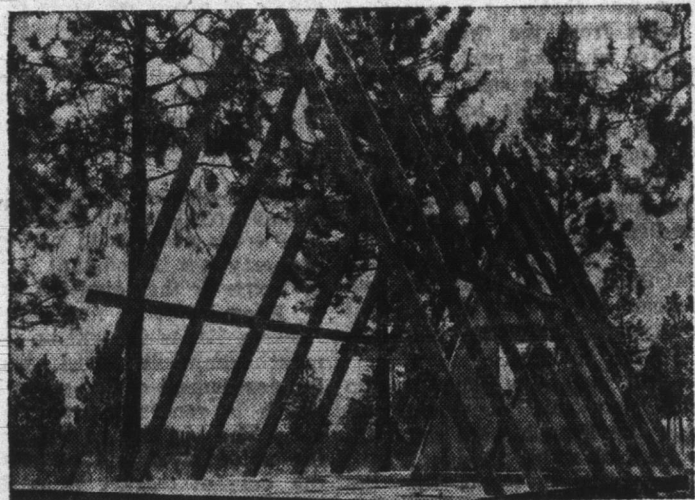
NIBLICK & CO.



(Western Pine Association) MATERIALS COST is less than \$1,000 for weather-proof A-frame vacation cabin featured by the Western Pine Association. Man-hours required to erect the home total 105. Average handyman and family could put entire home together in three or four weekends at any remote vacation site, and solid lumber is easily transported in a rented trailer.



(Western Pine Association) CONCRETE BLOCKS serve as foundation for cabin. 4" x 10" joists are spaced 4' apart on 4" x 10" Fir or Larch beams.



(Western Pine Association) THE "A's" HAVE IT, when it comes to the simple framing of the Western Pine Association "Engelmann Spruce" cabin, and the simple framing means construction man-hours saved. Add economical (about \$1,000) materials cost and the result is a vacation home well within average financial reach.

Refrigerator-Freezer Keeps Health Handy

A generous supply of ice cream, sherbet, and concentrated juices in the freezer section of your electric refrigerator-freezer guarantees easy, nutritious treats for the youngsters.

Here's one quick recipe for a healthful "frier-upper" for four hungry children:

Reconstitute one six-ounce can of frozen orange juice and pour into four glasses. Add a scoop of raspberry sherbet to each glass and stir until sherbet is partially melted. Be prepared to serve seconds.

Easy To Wash Wood Windows

You no longer have to be a combination daredevil and drudge to wash windows. Many modern wood windows can be washed completely from the inside of the house.

Some windows of ponderosa pine lift right out of their frames and can be carried to the kitchen for washing. Others swing out, in or around so the outsides can be washed from indoors.

Even the many-paned wood win-

Becomes Built-In Later

'Convertible' Dishwasher Goes to Work As Portable

Today's convertible automatic dishwashers are solving a problem for thousands of families who:

1. Rent apartments or houses but plan to buy their own homes.
2. Own their homes but are thinking of moving into a new one or of modernizing their present kitchens.

Judith O'Flaherty, home service director for electric utility companies says the convertible dishwasher is ideal for these families because it is designed to go right to work as a portable but can be converted to a built-in when the need arises.

"A model of this type is designed to fit into the space occupied by a standard kitchen



This convertible-type dishwasher, now being used as a portable, can be built in permanently when a family remodels a kitchen or moves into a new home.

into a corner, a feature that makes it ideal for small kitchens. Many models have hardwood chopping block top that add kitchen work space.

"When the time arrives to install the dishwasher as a built-in, color conversion kits can be obtained that make it harmonize with any new decor," Miss O'Flaherty says. "On some models, panels with matching wood-grain finishes may be substituted."

Here are a few of the reasons an electric dishwasher heads the "most wanted" list of so many homemakers:

1. It cleans and sanitizes all the tableware in a way that hand-washing never can, thanks to the combination of hotter water and special detergents.
2. Hand pre-rinsing is eliminated. Dishes need only a quick brush off.
3. Pots and pans often can be washed along with china and glassware.
4. Today's electric dishwashers can handle an entire day's dishes for the average family.

dows that look so attractive with Colonial architecture are easy to wash today. Rectangular or diamond patterned grilles snap out for window washing, eliminating the tedious job of washing and polishing the corners of many tiny panes.

No matter what style of easy-to-wash windows of ponderosa pine you choose—casement, sliding, awning, or double-hung—you can find them at your local building material dealer's, sturdily built, treated to withstand weather and ready to install.

DO YOU HAVE A GAS PERMIT?

Want Convenience?



GAS FURNACE

No more "looking after" the furnace. G-E automatic heating ends fuss and bother.

for a FREE Estimate

Phone 3-2615

ASHBAUCHERS' TIN SHOP

Established 1915
Heating, Roofing, Siding, Spouting, Air Conditioning
116 N. 1st St. Decatur, Ind. Phone 3-2615

Home Building....

Is Our Business!
LET US

Assist You in The Design
and Planning of Your Home.

Provide Fully Improved City
Lots or Build On Your Site.

Provide The Proper Type of
Financing For Your Needs.

ESTIMATES FREE

Clark W. Smith

"A Complete Home Building Service"

Call 3-3512

South 2 Mi. on U.S. 27

"A Sound Investment Depends on
What You Build and Where You Build It"

If You Are Planning

A NEW
SIDEWALK

A NEW
DRIVEWAY

A NEW
BASEMENT

A NEW
FOUNDATION

CALL FOR...
DECATUR READY-MIX CONCRETE

FOR FREE ESTIMATES

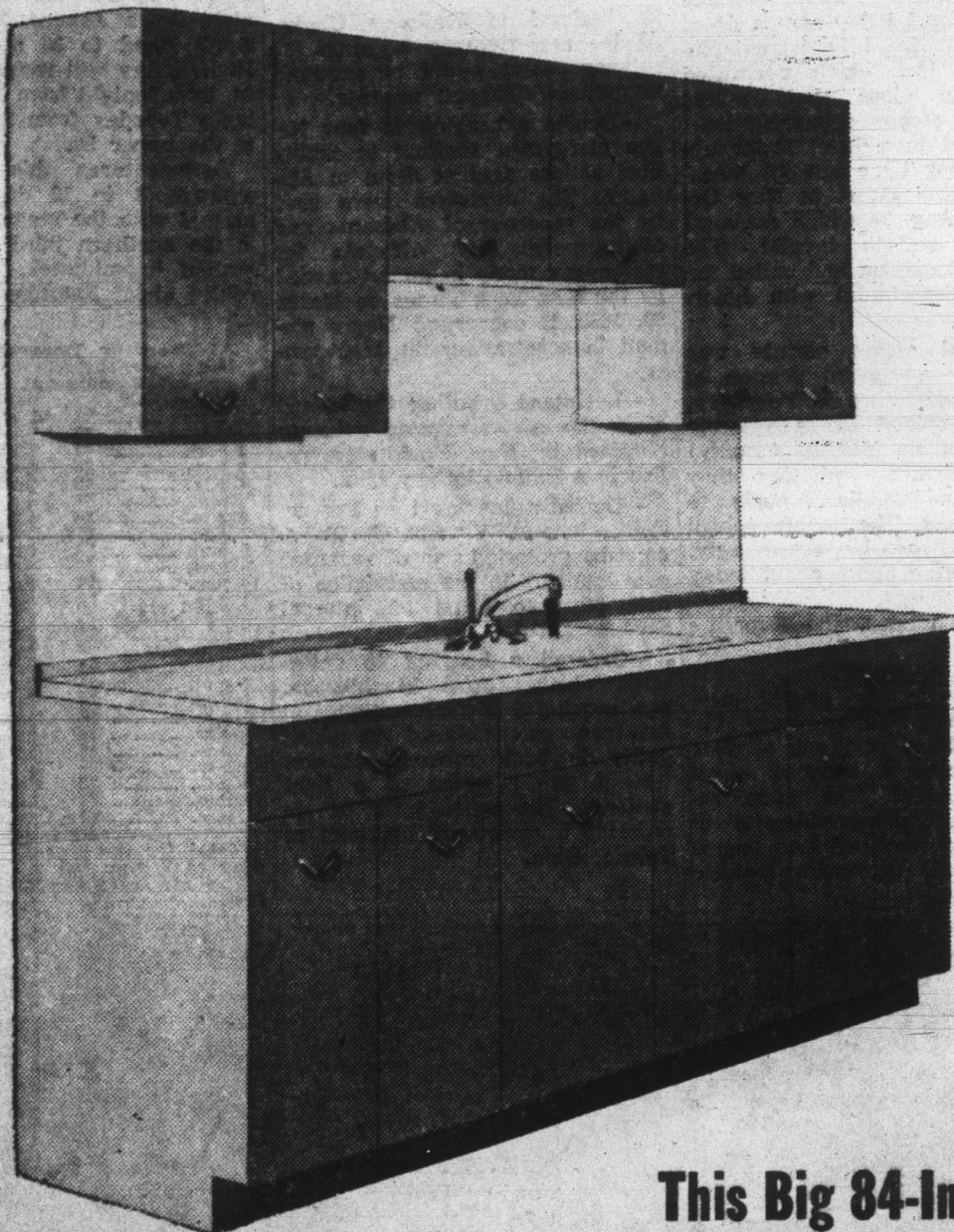
PHONE 3-2561

DECATUR READY-MIX CORP.

E. OAK & FORNAX STS.

DECATUR, IND.

WOOD CABINETS — BY — ARISTO-KRAFT



This Big 84-Inch

KITCHEN \$279⁹⁵

COMPLETE WITH TOP,
BOWL and FAUCET ONLY

HAUGK

209 N. 13th St. Decatur, Ind.

HEATING, PLUMBING,
AIR CONDITIONING,
APPLIANCES